

# **NOKIA C020/C021 DRIVER UPDATE**

## **QUICK GUIDE**



# Contents

1. INTRODUCTION .....	1
2. UNINSTALLING THE PREVIOUS DRIVER .....	1
2.1 STOPPING AND REMOVING THE WIRELESS LAN CARD .....	1
2.2 UNINSTALLING THE OLD SOFTWARE .....	1
3. INSTALLING THE NEW DRIVER .....	2
3.1 EXTRACTING THE FILES NEEDED FOR INSTALLATION .....	2
3.2 SETUP .....	2
4. CHANGES IN THE NEW DRIVER .....	6
4.1 USER INTERFACE CHANGES .....	6
4.2 GENERAL .....	6

## Legal Notice

Copyright © Nokia Internet Communications Inc 1999. All rights reserved. Nokia and Nokia Connecting People are registered trademarks of Nokia Corporation. Windows is a registered trademark of Microsoft Corporation. Other product and company names mentioned herein may be trademarks or trade names of their respective owners.

Nokia operates a policy of continuous development. Therefore we reserve the right to make changes and improvements to any of the products described in this document without prior notice.

Under no circumstances shall Nokia be responsible for any loss of data, or income or any direct, special, incidental, consequential or indirect damages howsoever caused.



## 1. INTRODUCTION

---

This guide explains how to install the latest driver for the Nokia C020/C021 Wireless LAN Card and lists the changes made to the software.

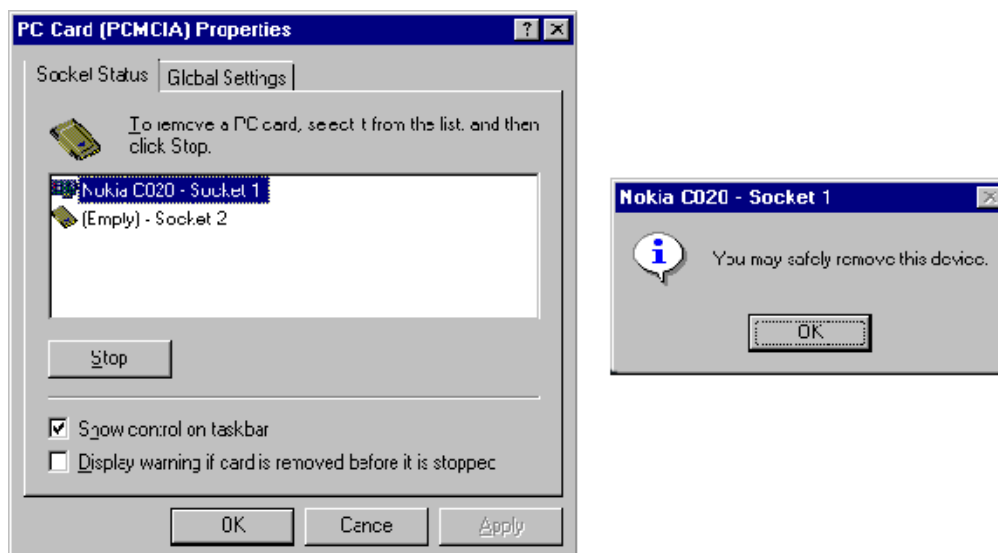
## 2. UNINSTALLING THE PREVIOUS DRIVER

---

Before you can install the new driver, you must stop the wireless LAN card, remove it from the computer, and uninstall the old software.

### 2.1 STOPPING AND REMOVING THE WIRELESS LAN CARD

1. Click **Start**, point to **Settings**, and then click **Control Panel**. Double-click on **PC Card (PCMCIA)**, select the **Nokia C020/C021** and click **Stop**. The card is now stopped.



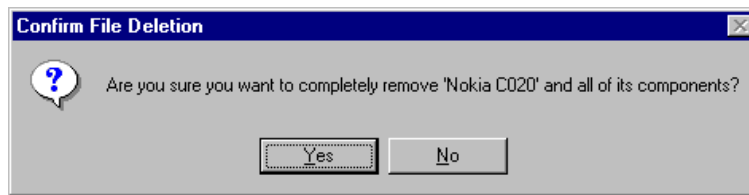
*Figure 2.1: Stopping the Nokia C020 Wireless LAN Card.*

2. Remove the card from the computer.

### 2.2 UNINSTALLING THE OLD SOFTWARE

Next you should uninstall the old software:

1. Click **Start**, point to **Programs**, and then point to **Nokia C020**. Select **Uninstall Nokia C020**.
2. In the confirmation dialog box, select **Yes**. The uninstallation program removes all Nokia C020 software.



**Figure 2.2:** The uninstall program prompts you to confirm file deletion.

The uninstall program starts removing the software components. The status of the removal is displayed in the Remove Programs From Your Computer dialog box.



**Figure 2.3:** The Remove Programs From Your Computer dialog box.

### 3. INSTALLING THE NEW DRIVER

#### 3.1 EXTRACTING THE FILES NEEDED FOR INSTALLATION

To be able to start the setup program, you must extract the contents of the **C020\_W9X.zip** (for Windows 95, 98 and NT 4.0) file into a folder of your choice.

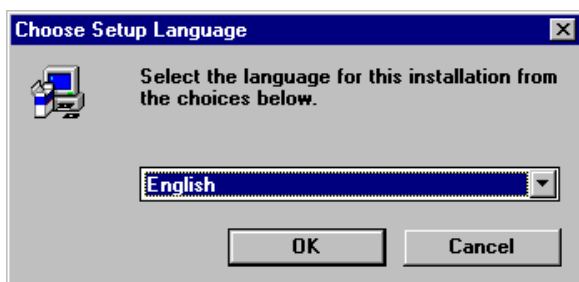
#### 3.2 SETUP

The setup program installs the files needed for the proper operation of the Nokia C020/C021 Wireless LAN Card. During the setup process, you can also make necessary configurations to the card. After all files are copied and you have specified the correct settings and restarted your computer, the new driver is ready for use.



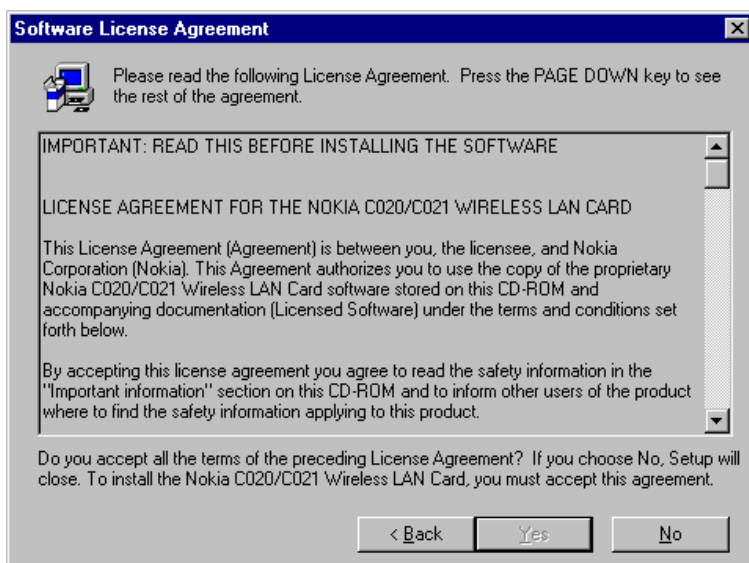
**Warning:** Do not insert the Nokia C020/C021 into the PC card slot before you are prompted to do so!

3. Run **setup.exe** in the folder where you extracted the files.
4. In the **Choose Setup Language** dialog box, select the language you prefer from the drop-down list box and click **OK**.



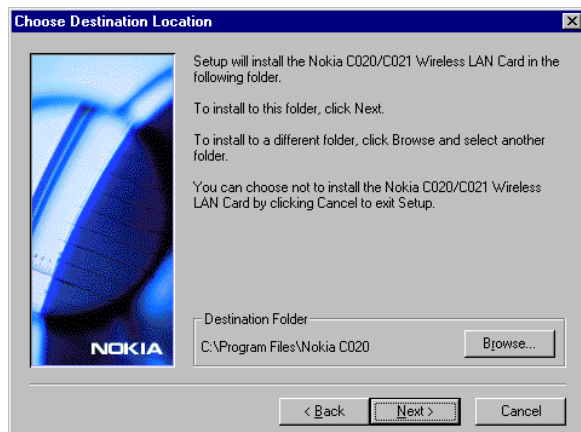
**Figure 3.2:** The Choose Setup Language dialog box.

5. The setup program recommends that you shut down all other applications. Close all other applications, as they may interfere with the installation, and then click **Next** to continue.
6. Next, you can see the Software Licence Agreement. Read the text and scroll to the end of the text to continue the installation by clicking **Next**.



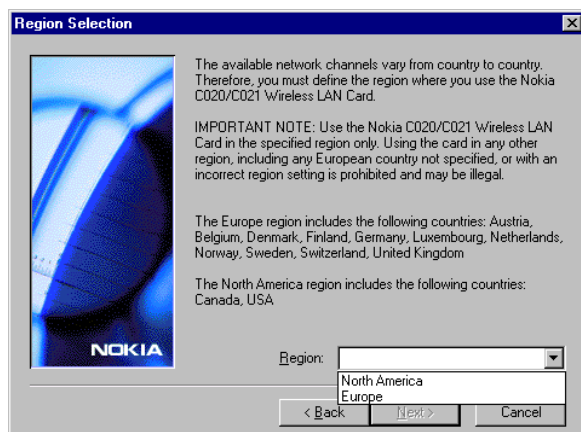
**Figure 3.3:** The Software Licence Agreement dialog box.

7. Next, the setup program asks you to define the installation path. Select the folder where you want to install the software.



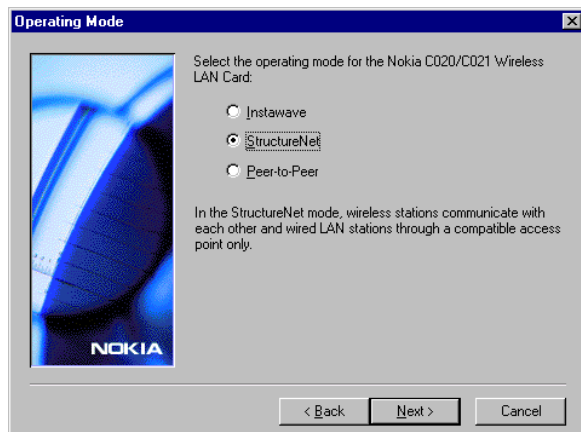
**Figure 3.4:** The Choose Destination Location dialog box.

8. Next, select the region where you are using the product (Europe or North America).



**Figure 3.5:** The Region Selection dialog box.

9. Next, select the operating mode for the card (StructureNet, Peer-to-peer, or Instawave) by clicking one of the three option buttons. Then click **Next** to continue the installation.



**Figure 3.6:** The Operating Mode dialog box.

10. Next, select the network name. Depending on the operating mode you chose, you may also have to choose the channel.
11. Insert the Nokia C020/C021 Wireless LAN Card into the computer when the program prompts you to do so.

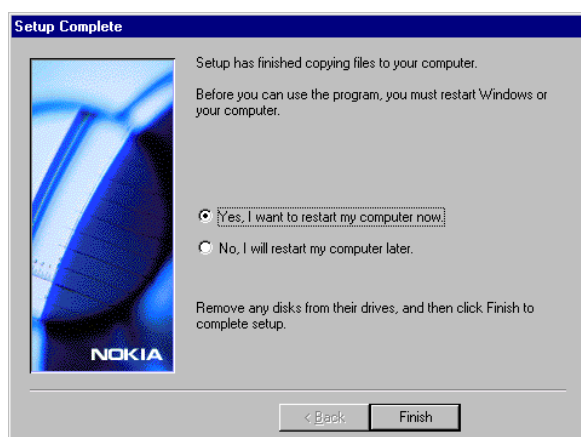
The program tries to recognise the card. This may take several minutes.



**Note:** In Windows NT 4, you should insert the card only after shutting down the computer, so only click **OK** at this point and do not insert the card.

12. Windows installs some network and other components, and you may be prompted to insert the Windows installation CD.

Once the setup program has finished copying files, it asks you to restart the computer. Restart your computer to be able to use the new driver.



**Figure 3.7:** The Setup Complete dialog box.

## 4. CHANGES IN THE NEW DRIVER

---

### 4.1 USER INTERFACE CHANGES

With the new driver, by right-clicking on the user interface, you can now view a shortcut menu.

Another change is that the user interface now shows which operating mode is active and only shows information that is relevant to that operating mode:

**Instawave:** shows Operating mode and Network status

**StructureNet:** shows Operating mode, Access point (that the wireless station is connected to), Network status, and Network name

**Peer-to-peer:** shows Operating mode, Network status, and Network name

### 4.2 GENERAL

Compatibility with other network cards has been improved and some minor general improvements have been made.