



SUPPORT GUIDE FOR THE NOKIA 5210 WITH AN INFRARED DATA CONNECTION IN A POCKET PC DEVICE

NOKIA



Contents

1. INTRODUCTION	1
2. SETTING UP A NEW CONNECTION	1
3. MAKING A DIAL-UP CONNECTION	2
4. HANGING UP THE CONNECTION	4

Legal Notice

Copyright © Nokia Mobile Phones 2002. All rights reserved.

Reproduction, transfer, distribution or storage of part or all of the contents of this document in any form without the prior written permission of Nokia is prohibited.

Nokia and Nokia Connecting People are registered trademarks of Nokia Corporation. Other product and company names mentioned herein may be trademarks or tradenames of their respective owners.

Nokia operates a policy of continuous development. Nokia reserves the right to make changes and improvements to any of the products described in this document without prior notice.

Under no circumstances shall Nokia be responsible for any loss of data or income or any special, incidental, consequential or indirect damages howsoever caused.

The contents of this document are provided "as is". Except as required by applicable law, no warranties of any kind, either express or implied, including, but not limited to, the implied warranties of merchantability and fitness for a particular purpose, are made in relation to the accuracy, reliability or contents of this document. Nokia reserves the right to revise this document or withdraw it at any time without prior notice.



1. INTRODUCTION

How to configure Pocket PC device to function with Nokia 5210 phone as a modem with it

- Pocket PC device and Nokia 5210 phone are the basic requirements
- Data services (at least outgoing data) should be activated in order to be able to make data calls
- Decent GSM coverage and also at least half of the battery left in both devices, as the data connection's power consumption is usually quite high.

2. SETTING UP A NEW CONNECTION

1. Go to the Start menu and select Settings
2. Select Modem
3. You should now have a list of available connections; just click on the New Connection... option.
4. Now complete the settings as shown in the figures below:

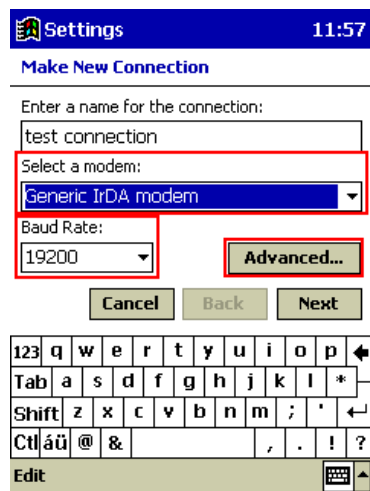


Figure 1. Select a modem and check the Baud Rate. After that tap Advanced...

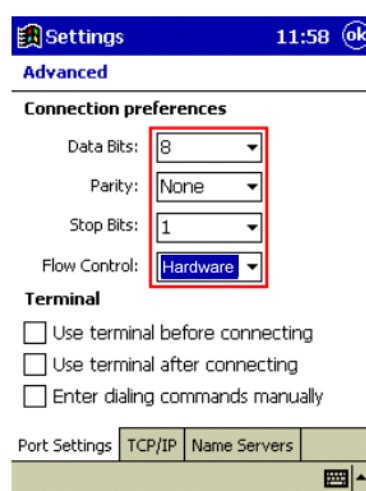


Figure 2. Check Connection preferences. Especially that the Flow Control selected is HW. Tap OK on upper right corner and then tap Next.

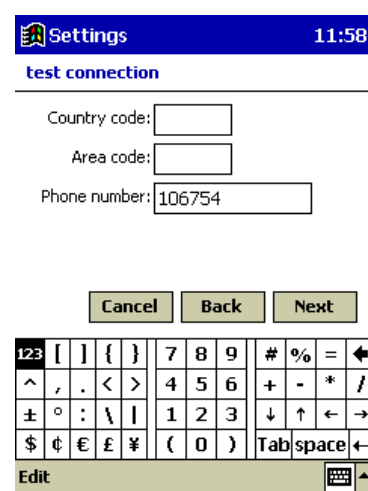


Figure 3. Type in the ISP's phone number and then tap Next.

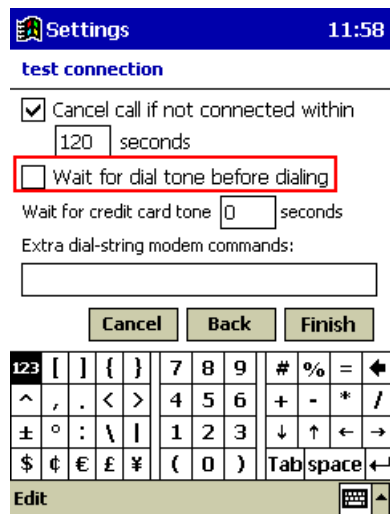


Figure 4. Uncheck the Wait for Dial tone before dialling check box and tap Finish.

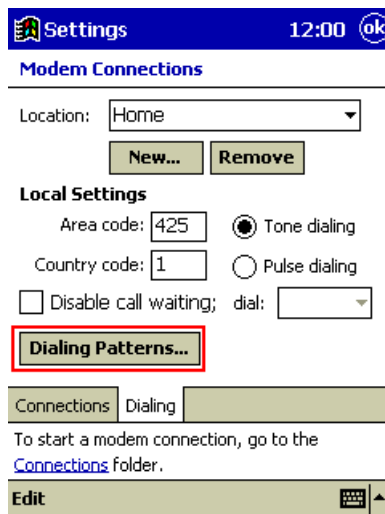


Figure 5. Now go to Dialling leaflet and go to Dialling Patterns...

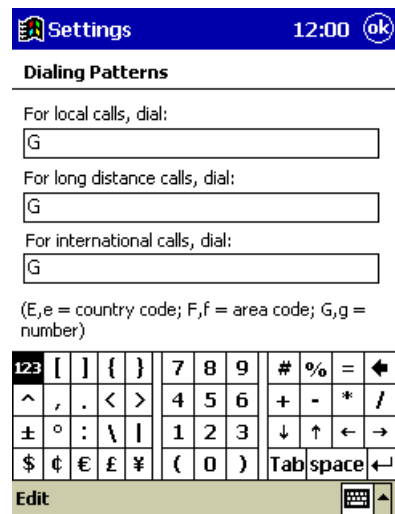


Figure 6. In some cases you may need to edit these to get the phone number right when dialling.



Tip: If you wish to make a 14.4 Kbps connection then put the following dial-string in to the Extra dial-string... box:

Extra dial-string modem commands:
+cbst=14

3. MAKING A DIAL-UP CONNECTION

1. Go to the Start menu and select Programs
2. Select Connections
3. You should now have the icons of the available connections; click on the connection you have just created (Figure 7).
4. Fill in your User name and Password and tap Connect (Figure 8)
5. Figures 9 and 10 shows the Status screens of the connection

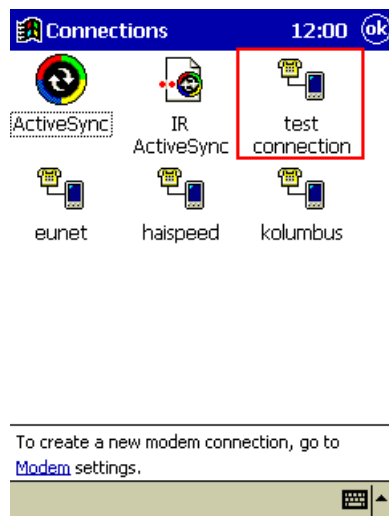


Figure 7.

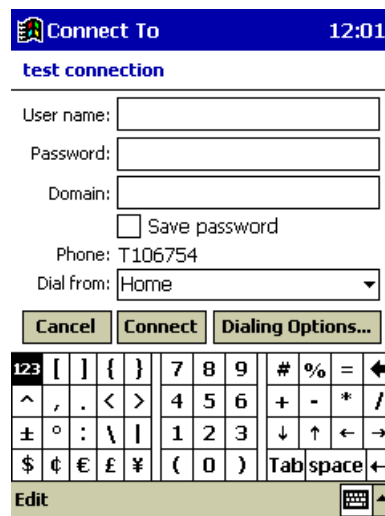


Figure 8.



Figure 9.

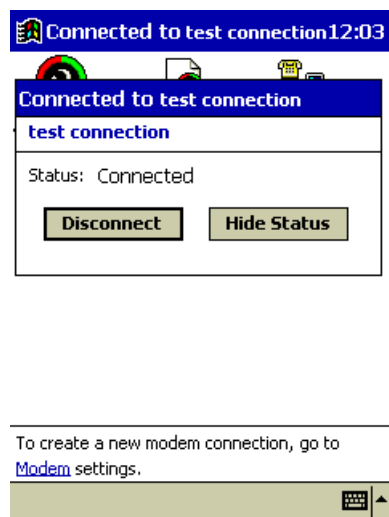


Figure 10.

6. You should now be connected to your ISP, so just start your Internet Explorer or Inbox.

4. HANGING UP THE CONNECTION

1. Go to the Start menu and select Today
2. Tap the connection icon in the lower right corner and
3. Select Disconnect (Figure 10).

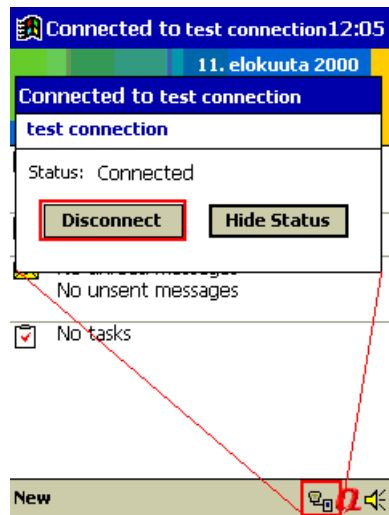


Figure 10.