

SUPPORT GUIDE FOR DIAL-UP for the Nokia 5210

NOKIA





Contents

- 1. INTRODUCTION 1
- 2. SYSTEM REQUIREMENTS 1
- 3. MAKING A DIAL-UP CONNECTION 1

Legal Notice

Copyright © Nokia Mobile Phones 2002. All rights reserved.

Reproduction, transfer, distribution or storage of part or all of the contents in this document in any form without the prior written permission of Nokia is prohibited.

Nokia and Nokia Connecting People are registered trademarks of the Nokia Corporation. Other product and company names mentioned herein may be trademarks or tradenames of their respective owners.

Nokia operates a policy of continuous development. Nokia reserves the right to make changes and improvements to any of the products described in this document without prior notice.

Under no circumstances shall Nokia be responsible for any loss of data or income or any special, incidental, consequential or indirect damages howsoever caused.

The contents of this document are provided "as is". Except as required by applicable law, no warranties of any kind, either express or implied, including, but not limited to, the implied warranties of merchantability and fitness for a particular purpose, are made in relation to the accuracy, reliability or contents of this document. Nokia reserves the right to revise this document or withdraw it at any time without prior notice.



1. INTRODUCTION

First you must have the Nokia 5210 modem drivers installed on your computer. Easiest way to do this is to install PC Suite first. Please note that you can't use your Nokia 5210 with PC Suite and as a modem simultaneously.

2. SYSTEM REQUIREMENTS

To run the Nokia 5210 as a modem, you need:

- An Intel-compatible PC equipped with Windows 95/98/ME, Windows 2000
- It is also assumed that the PC Suite for the Nokia 5210 is installed

For connection between the Nokia 5210 and a PC you need a compatible infrared port in computer



Note: In this guide, all references to personal computers (PC) are also applicable to laptop computers.

3. MAKING A DIAL-UP CONNECTION

3.1 MAKING A NORMAL GSM DATA DIAL-UP CONNECTION

1. Go to My Computer – Dial-Up Networking - Make a new connection (in Win95/98). In Win 2000 Pro go to My Computer – Control Panel –Network and Dial-Up Connections – Make New Connection. This opens a window where you can choose the right modem and name the connection in Win95/98 (Picture 1.) and in Win 2000 Pro you see welcoming window (Picture 2.).

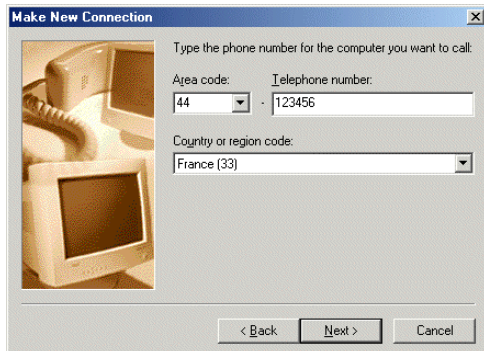


Picture 1. Naming the connection

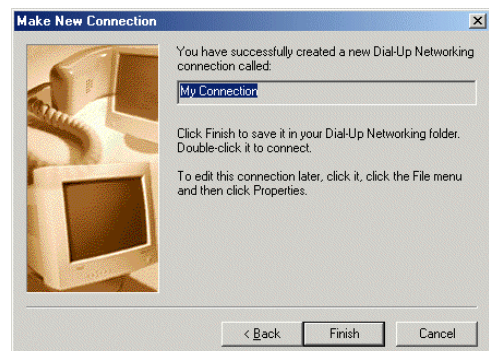


Picture 2. Click Next>

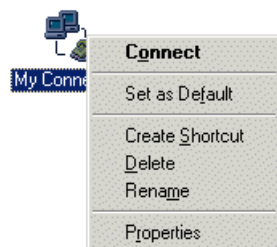
For Win 95/98 follow pictures 3-6 and for Win 2000 Pro follow pictures 7-11.



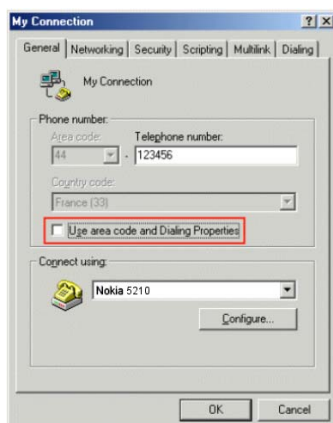
Picture 3.



Picture 4. Click Next>



Picture 5. Changing connection properties (click right mouse button and choose Properties).

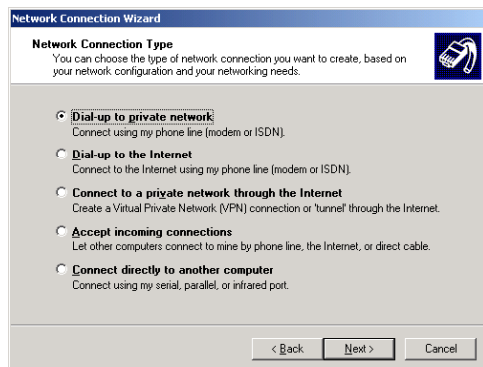


Picture 6. Please uncheck the "Use area..." if you don't need to use area or country code.

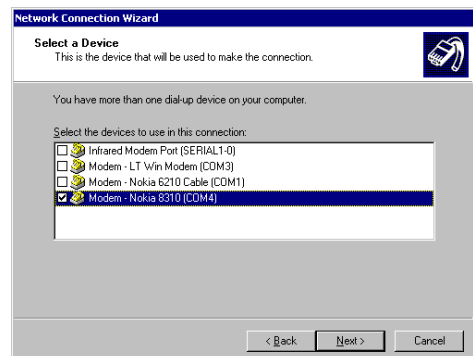
Following pictures shows steps to make a new dial-up connection in Win 2000 Pro (Pictures 7-11).



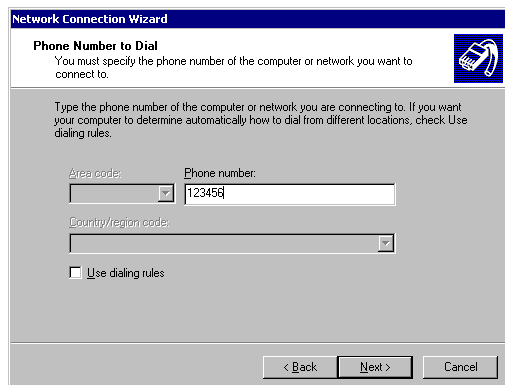
Note: You may get different windows and you may not need to go through as many steps as shown but just skip those steps that you don't get. Following pictures show the shortest way.



Picture 7. Choose either *Dial up to private network* or *Dial-Up to the Internet* and click Next.



Picture 8. Select "Nokia 5210" and click Next. NOTE! Modem list may look different depending on which option you chose in step 7.



Picture 9. Enter your ISP's phone number and click Next.



Picture 10. Select "For all users" or "Only for myself". NOTE! depending on which option you chose in step 7 you may need to go through more steps like setting up mail account etc.



Picture 11. Name your connection and click Finish.



Note: If you want to use a 14.4-Kb/s data line must add the following line to the extra settings option: +CBST=14. This can be done in a following way: Right click on the connection icon and select **Properties** and then click on **Configure...** → **Connection** → **Advanced...** → **Extra settings**).