



Quick Guide to Using the Nokia 6210 with a 16-bit Communication Application

This Quick Guide assumes that the Nokia 6210 is already installed on your computer and works as a faxmodem via a cable.

1. Installing and setting up

To find out which port the Nokia 6210 is using, open the Win95 Device Manager (**Start ->Settings ->Control Panel ->System ->Device Manager**) and look at the Modem entries. (You might have to double-click on Modem to see all the modems.) Double-click on the Nokia 6210 Cable to see its Properties. Specify the Nokia 6210 Cable in your communication application (Figure 1). In this example the Nokia 6210 is physically connected to COM1.

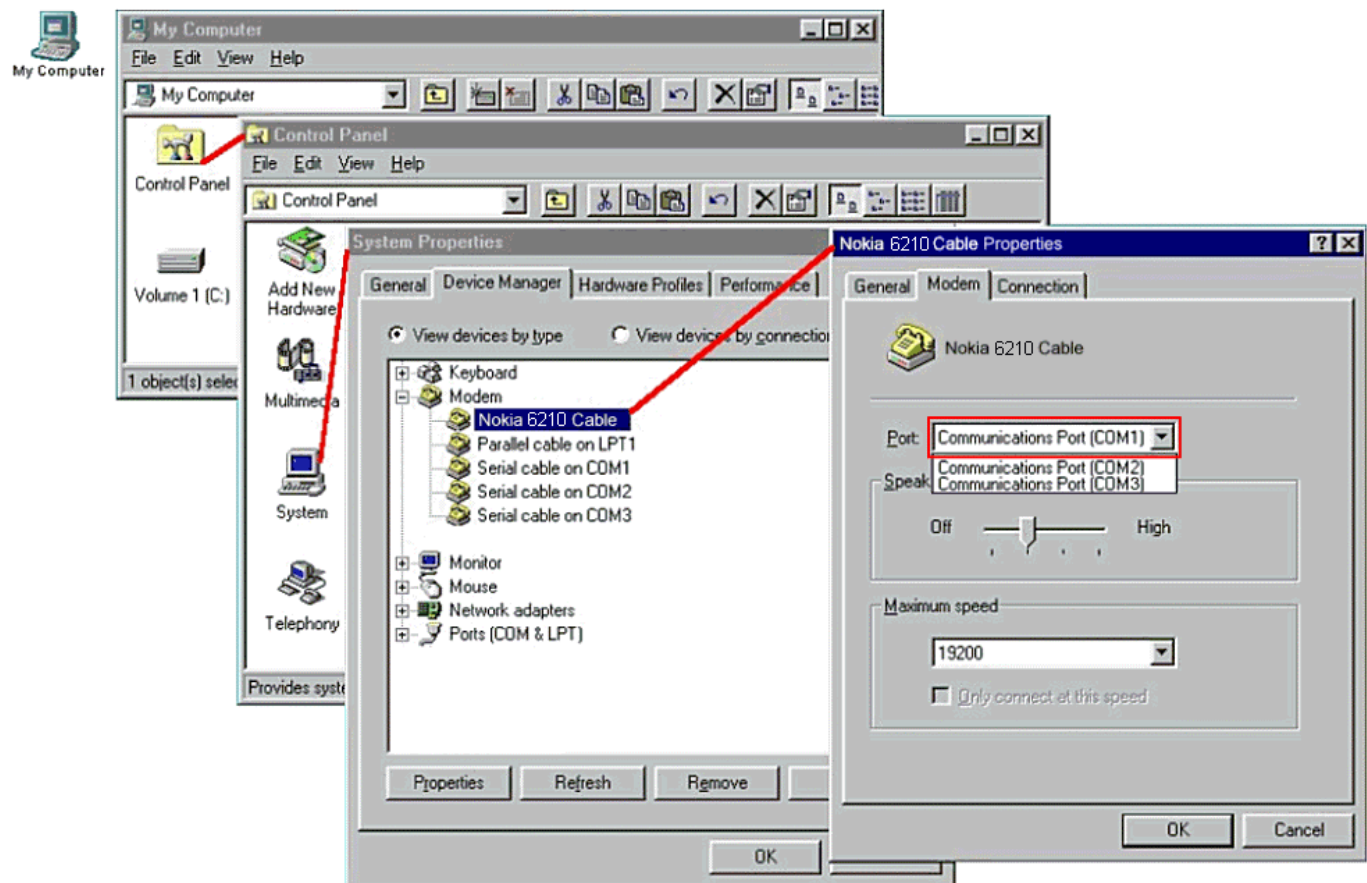


Figure 1. Serial port setup.

LEGAL NOTICE

Copyright © Nokia Mobile Phones 2000. All rights reserved.

Reproduction, transfer, distribution or storage of part or all of the contents of this document in any form without the prior written permission of Nokia is prohibited.

Nokia and Nokia Connecting People are registered trademarks of the Nokia Corporation. Other product and company names mentioned herein may be trademarks or tradenames of their respective owners.

Nokia operates a policy of continuous development. Therefore, we reserve the right to make changes and improvements to any of the products described in this document without prior notice.

Under no circumstances shall Nokia be responsible for any loss of data or income or any special, incidental, consequential or indirect damage howsoever caused.

The contents of this document are provided "as is". Except as required by the applicable law, no warranties of any kind, either express or implied, including, but not limited to, the implied warranties of merchantability and fitness for a particular purpose, are made in relation to the accuracy, reliability or contents of this document. Nokia reserves the right to revise this document or to withdraw it at any time without prior notice.