



26.09.00

Quick Guide to Using the Nokia 6210 with a Cable Connection

1.	Windows 9x Modem configuration	2
1.1	Windows 9x dial-up connection configuration.....	5
1.2	Using Windows 9x dial-up connection.....	5

1. WINDOWS 9X MODEM CONFIGURATION

This Quick Guide shows you how to configure a new modem for Windows 9x. This procedure requires a so called .INF file, which contains information about the modem used. You can find the .INF file from CD-ROM or from <http://www.forum.nokia.com/>.

Setting up a modem in Windows 9x is a straightforward process.

1. Open Control Panel (Start | Settings | Control Panel)
2. Select *Modems*
3. Select *Add*

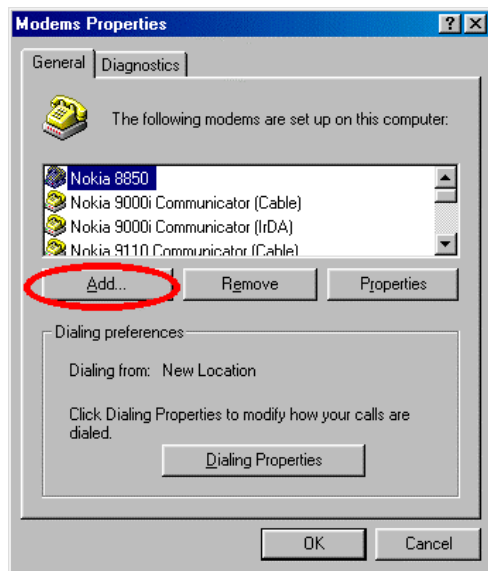


Figure 2. Modems

4. Select *Other*

(and continue by selecting *Next...*)

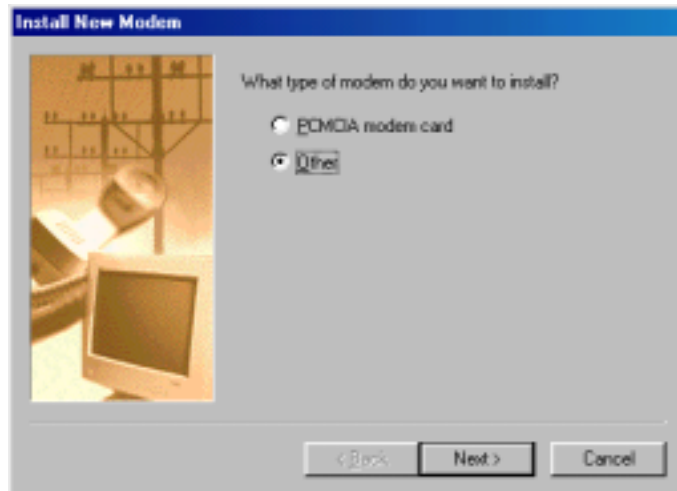


Figure 3. Other

5. Select *Don't detect*

(and continue by selecting *Next...*)

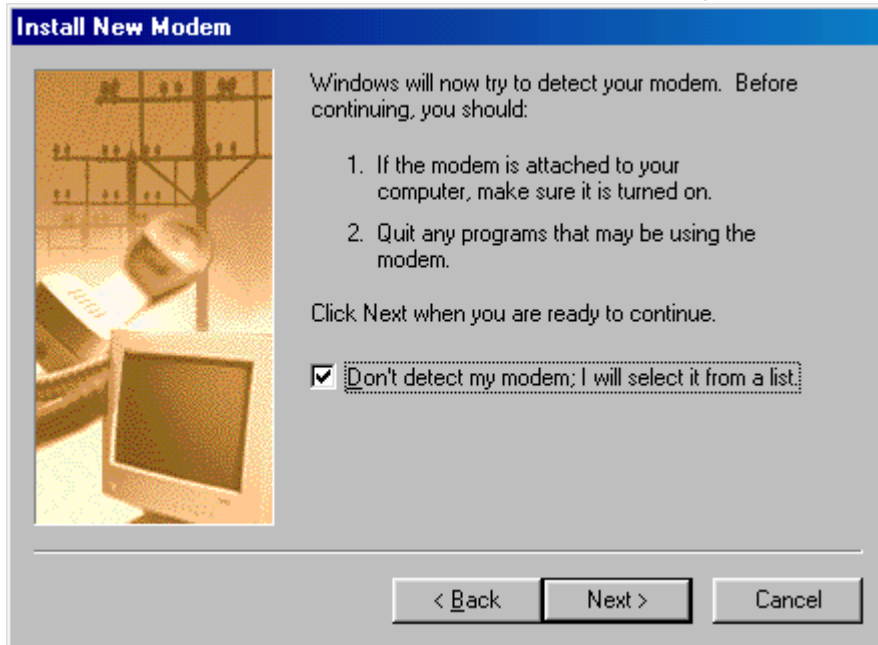


Figure 4. *Don't detect*

6. Select *"Have disk..."* and browse to locate the *n6210Cable.inf* file.

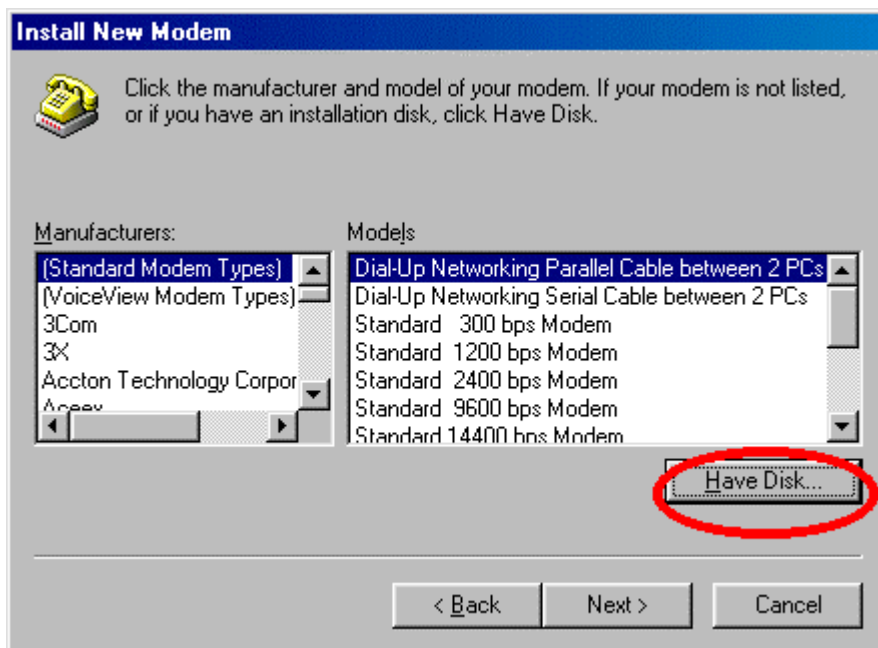


Figure 5. *Have disk...*

7. Select *Nokia 6210 Cable* from the list (and continue by selecting *Next...*)

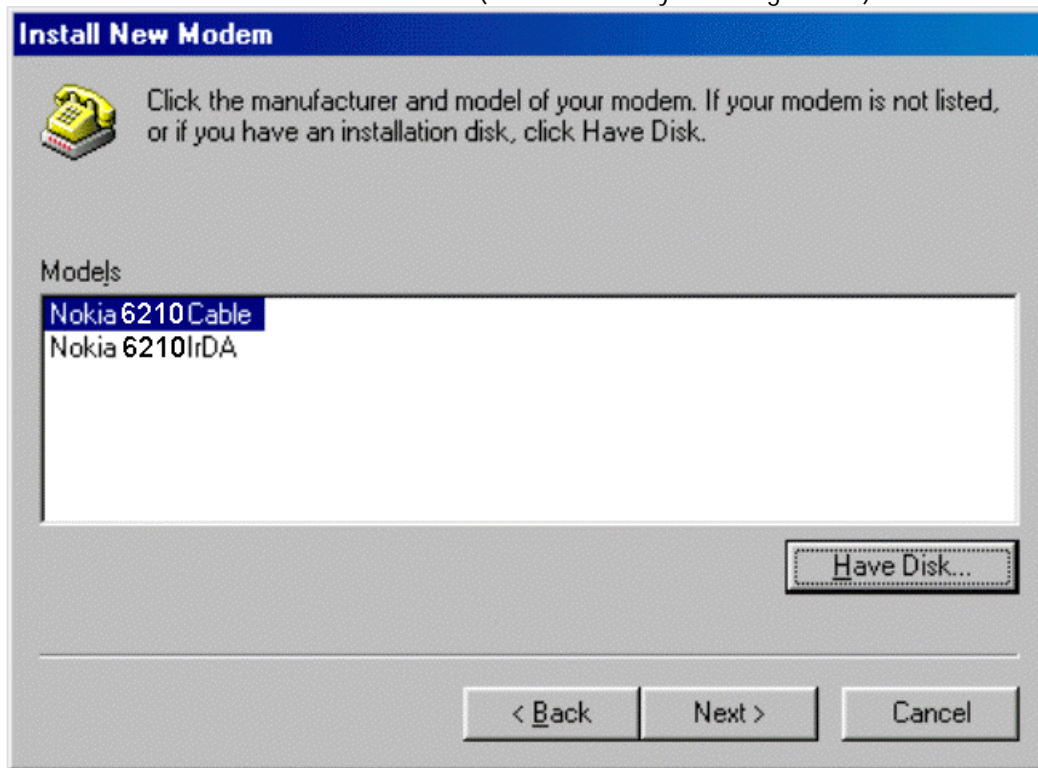


Figure 6. Selecting Nokia 6210 Cable

8. Select *Communications Port (COM1)* (and continue by selecting *Next...*)

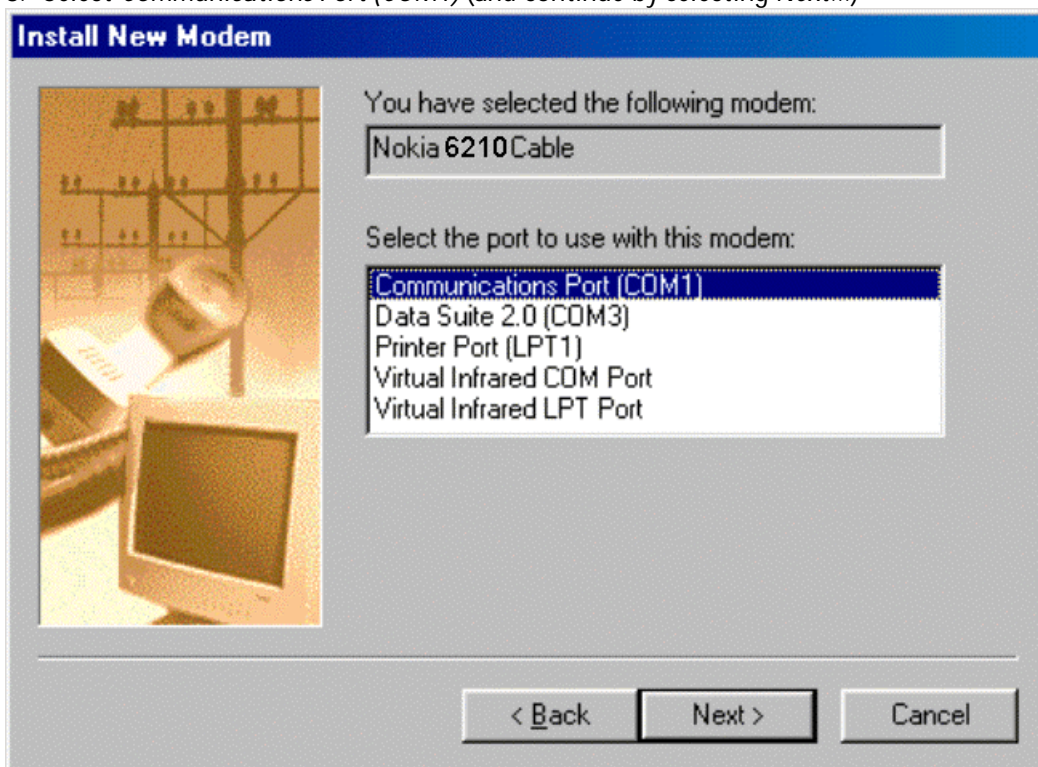


Figure 7. Port selection

9. Select Finish

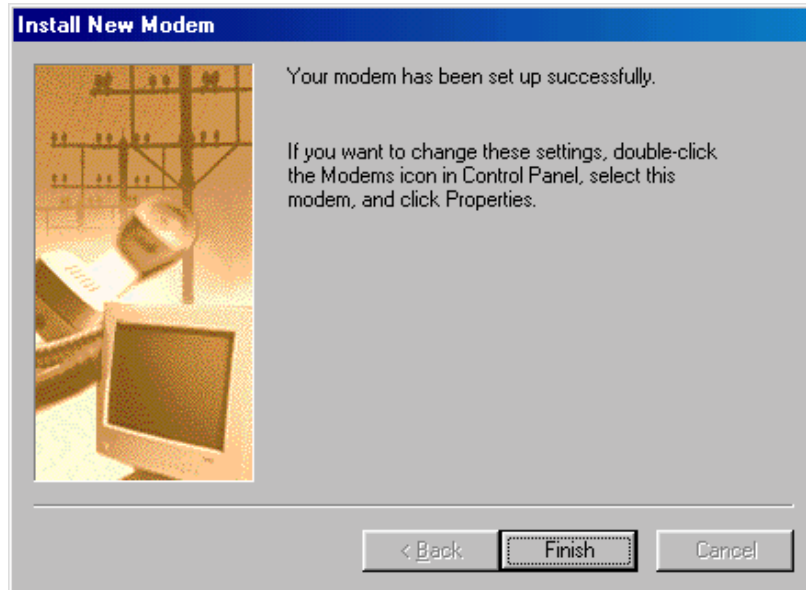


Figure 8. Finish

After Windows 9x modem has been properly installed you can start to use your data and fax applications in Windows 9x environment by selecting Nokia 6210 Cable as the modem.

1.1 Windows 9x dial-up connection configuration

For remote networking also the dial-up connection must be configured properly.

1. Open *Dial-Up Networking* (*Start | Programs | Accessories | Dial-Up Networking*)
2. Select *Make New Connection*
3. Replace 'My Connection' with an appropriate name
4. Select Nokia 6210 Cable (and continue by selecting *Next...*)
5. Type in the desired Dial-Up number
6. Skip the *Area Code* and *Country Code*
7. *Select Finish*
8. Click the newly configured Dial-Up Connection with the right mouse button
9. Select *Properties*
10. Empty the 'Use country code and area code' selection
11. Select Server Types
12. Usually you need only "Enable software compression" and "TCP/IP" protocol
13. Check also TCP/IP settings from your Internet service provider
14. Select OK

1.2 Using Windows 9x dial-up connection

Now you can use the connection that you have just configured.

1. Open new connection by double-clicking it
2. Enter your Username and password
3. Press Connect
4. If your phone does not dial but gives error 629 or 630, open HyperTerminal and give the AT&F command. Close HyperTerminal and try to establish the connection with Dial-up networking.

Legal Notice

The contents of this document are copyright © 1995 – 2000 Nokia. All rights reserved.

Reproduction, transfer, distribution or storage of part or all of the contents in any form without the prior written permission of Nokia is prohibited.

Nokia is a registered trademark of Nokia Corporation. Nokia product names are either trademarks or registered trademarks of Nokia. Other product and company names mentioned herein may be trademarks of their respective owners.

The contents of this document is provided "as is". Except as required by the applicable law, no warranty of any kind, either express or implied, is made in relation to the accuracy, reliability or content of the document. Nokia reserves the right to revise the document or withdraw it at any time without prior notice.

Nokia is not responsible for any loss of data, income or any consequential damage howsoever caused.