



Quick Guide to Using the Nokia 6210 with Lotus cc:Mail Mobile 6.22.00.1

In this Quick Guide it is assumed that the Nokia 6210 is already installed.

Installing and setting up

Install the cc:Mail Mobile as described in the Lotus cc:Mail Mobile User Guide. You will need to have the correct settings for your post office, etc. available when installing the client.

You must use the correct COM port in cc:Mail. This COM port can be found as follows: Control Panel - System - Device Manager - Ports (Figure 1). In the case shown, COM1 is correct.

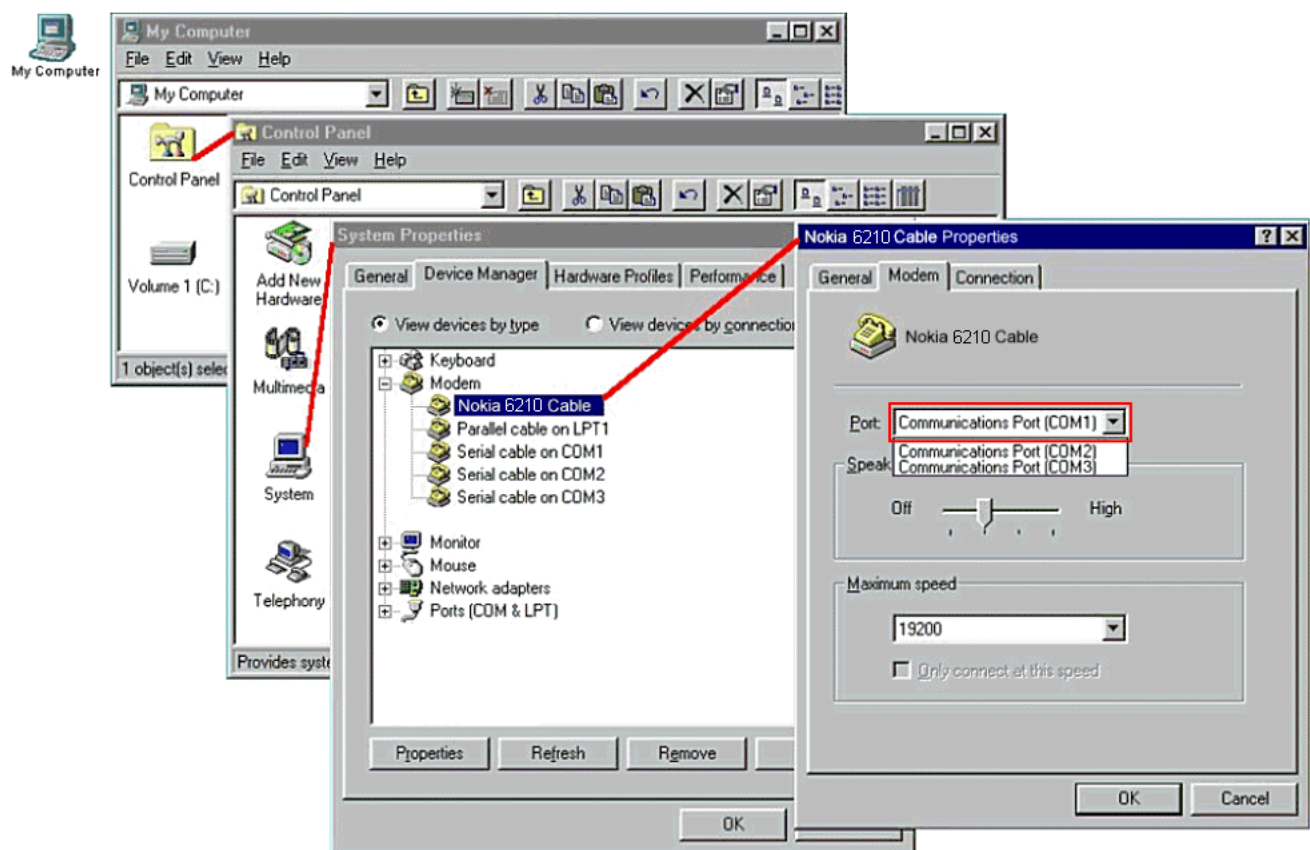


Figure 1. Correct COM port for the Nokia 6210.

Before using Nokia products you will need to have a script file copied to the same location in which other *.mdm files are located (for example c:\lotus\ccmail\mdm).



Nokia script files can be downloaded from our support web pages which can be found at the address <http://www.forum.nokia.com>.

Once the files have been copied to the correct location, cc:Mail must be configured from Mobile - Locations.....

Edit Telephone Dialing Rules as you wish but remember that Nokia products do not understand brackets - please do not use separate area codes and phone numbers (Figure 2).

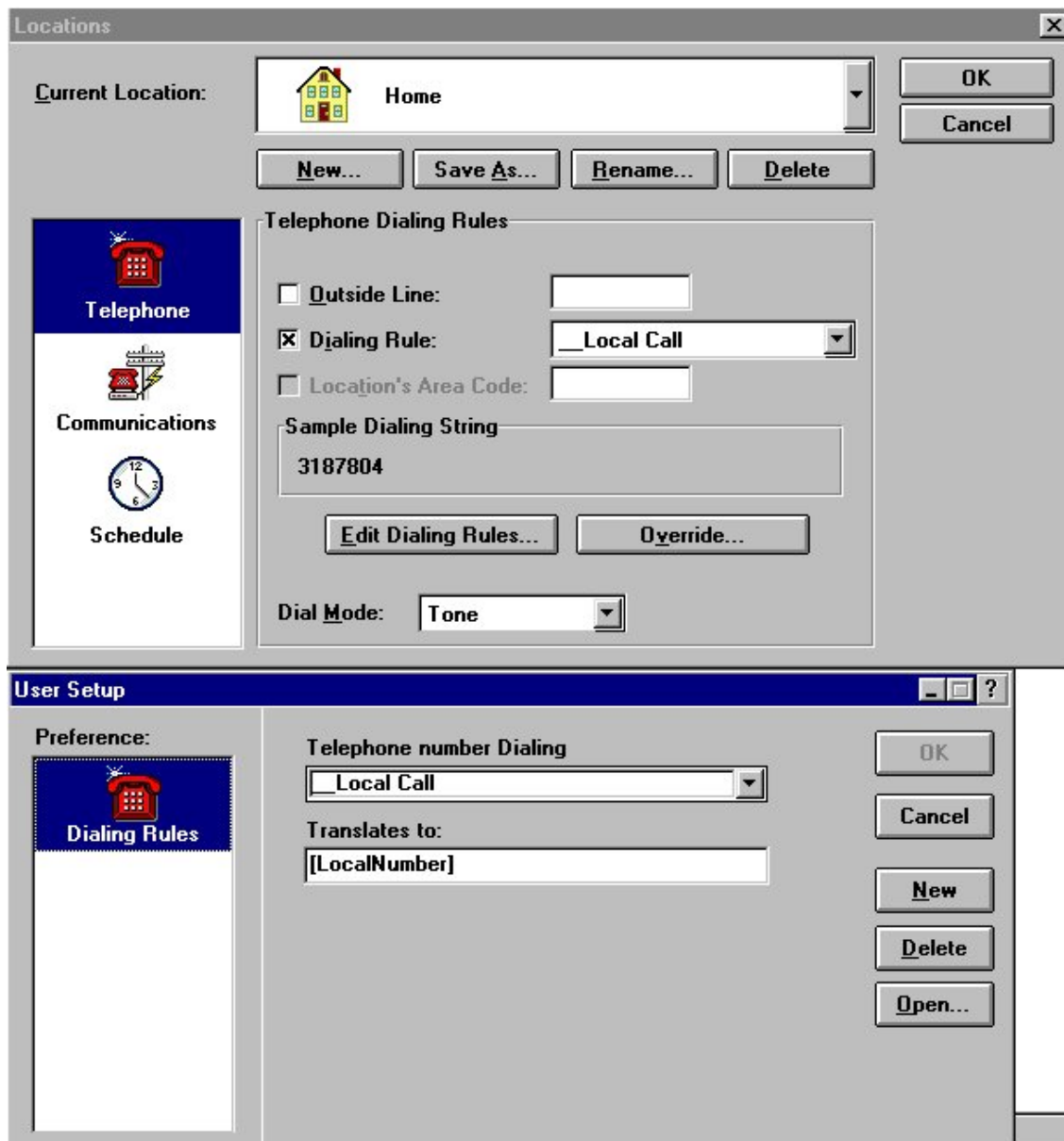


Figure 2. Editing the Dialing Location.



17.04.00

Next, you must add the communications method. Select Communications and then Add. Enter the Method Name and select the Modem Type as Modem (do not use Wireless). Select "Nokia 6210 (9600)" or "Nokia 6210 (Max. 28.8 Kbps)" as the Modem Type. Select the correct COM port for the modem (Figure 3).

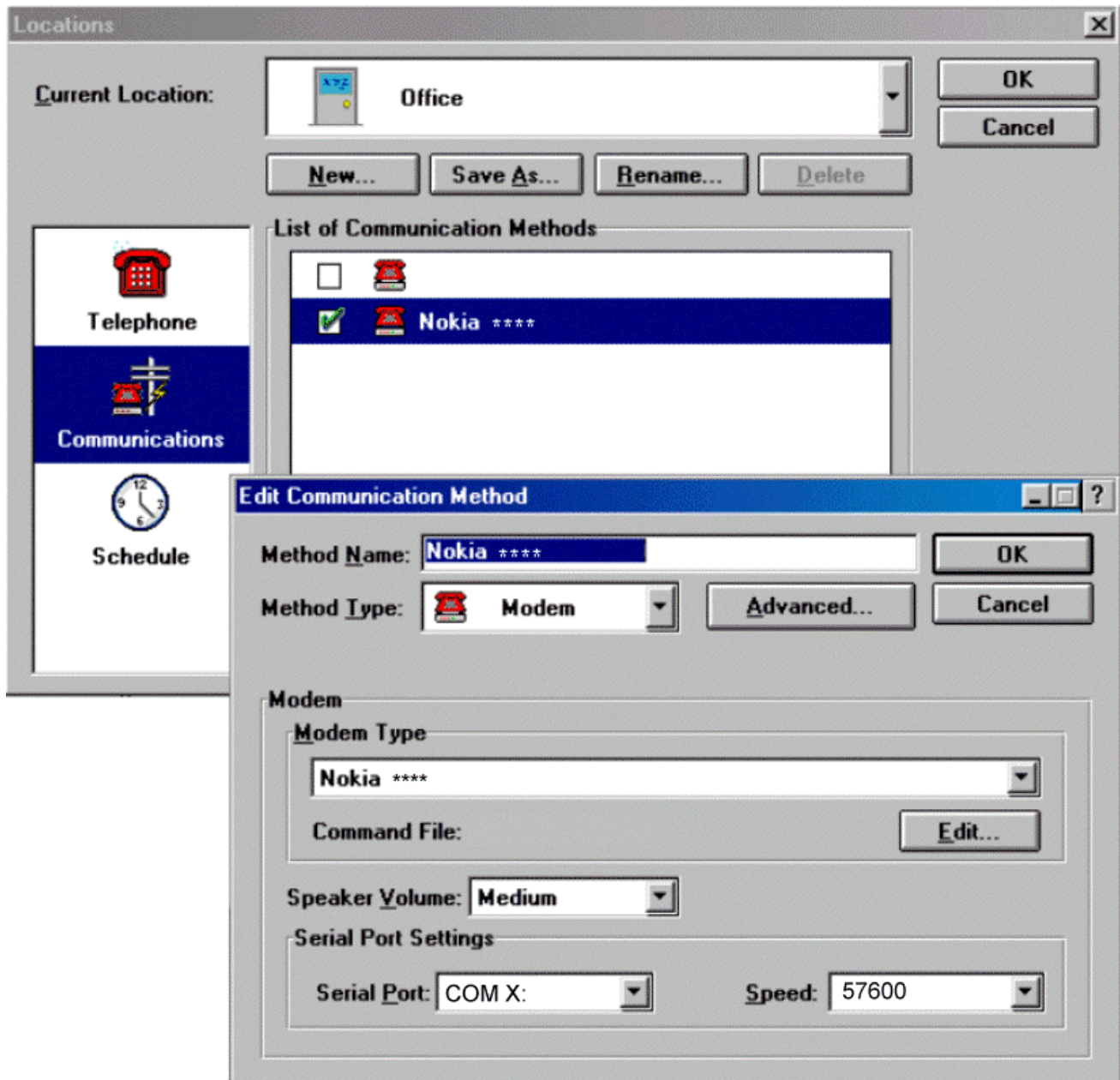


Figure 3. Editing the Communication Method.



17.04.00

Making a connection

Select Mobile - Send and Receive or Receive only. The following communications window will appear (Figure 4).

```

Lotus cc:Mail Background
[Stop] [Start] [Message Summary] [Diagnostics]
27.10.98 16:16 Waiting to receive messages...
27.10.98 16:16 Send to modem: AT$0=1
27.10.98 16:16 Receive from modem: OK
27.10.98 16:16 Receive from modem:
27.10.98 16:17 Send to modem: ATE0V1
27.10.98 16:17 Receive from modem:
27.10.98 16:17 Establishing a send/receive connection.
27.10.98 16:17 Setting up to connect to 'labra' ...
27.10.98 16:17 Checking type Nokia Data Suite 2.0 against 'labra'.
27.10.98 16:17 Using communication method : Nokia Data Suite 2.0
27.10.98 16:17 Resetting modem...
27.10.98 16:17 Send to modem: ATE0V1
27.10.98 16:17 Receive from modem: OK
27.10.98 16:17 Send to modem: AT$0=0
27.10.98 16:17 Receive from modem: OK
27.10.98 16:17 Send to modem: ATH0
27.10.98 16:17 Receive from modem: OK
27.10.98 16:17 Send to modem: AT&F
27.10.98 16:17 Receive from modem: OK
27.10.98 16:17 Send to modem: ATE0V1
27.10.98 16:17 Receive from modem: ATE0V1
27.10.98 16:17 Receive from modem: OK
27.10.98 16:17 Send to modem: ATG0(XS10=8057+55535+78C18D2851
27.10.98 16:17 Receive from modem: OK
27.10.98 16:17 Send to modem: ATS34+2
27.10.98 16:17 Receive from modem: OK
27.10.98 16:17 Send to modem: ATM1L2
27.10.98 16:17 Receive from modem: OK
27.10.98 16:17 Placing call to +35833
27.10.98 16:17 Send to modem: ATDT+35833
27.10.98 16:17 Receive from modem: CARRIER
27.10.98 16:17 Receive from modem: CONNECT 9600
27.10.98 16:18 CONNECT 9600
27.10.98 16:18 Comm connection made.
27.10.98 16:18 Using Large packets in communication.
27.10.98 16:18 Connecting to Post Office...
27.10.98 16:18 Packet connection made to Router.
27.10.98 16:18 Established link to Router.
27.10.98 16:18 Connection accepted (HSEC)
27.10.98 16:18 Preparing to send outbox messages: ...
27.10.98 16:18 1 message sent.

27.10.98 16:18 Preparing to receive messages: ...
27.10.98 16:18 0 messages accepted, 0 messages rejected.
27.10.98 16:18 Bad Packet Summary -- Naks sent: 0 recv: 0 Retrans: 0
27.10.98 16:18 Hanging up the telephone ...
  
```

Figure 4. Connection log.

LEGAL NOTICE

Copyright © Nokia Mobile Phones 2000. All rights reserved.

Reproduction, transfer, distribution or storage of part or all of the contents of this document in any form without the prior written permission of Nokia is prohibited.

Nokia and Nokia Connecting People are registered trademarks of the Nokia Corporation. Other product and company names mentioned herein may be trademarks or tradenames of their respective owners.

Nokia operates a policy of continuous development. Therefore, we reserve the right to make changes and improvements to any of the products described in this document without prior notice.

Under no circumstances shall Nokia be responsible for any loss of data or income or any special, incidental, consequential or indirect damage howsoever caused.

The contents of this document are provided "as is". Except as required by applicable law, no warranties of any kind, either express or implied, including, but not limited to, the implied warranties of merchantability and fitness for a particular purpose, are made in relation



to the accuracy, reliability or contents of this document. Nokia reserves the right to revise this document or to withdraw it at any time without prior notice.