

# NOKIA 7650



## SUPPORT GUIDE FOR EMAIL SETTINGS IN NOKIA 7650

**NOKIA**



# Contents

- 1. INTRODUCTION ..... 1
- 2. EMAIL ACCOUNT SETTINGS ON PHONE ..... 1
- 3. EMAIL ACCOUNT SETTINGS WITH PC SUITE ..... 4

**Legal Notice**

Copyright © Nokia 2002. All rights reserved.

Reproduction, transfer, distribution or storage of part or all of the contents in this document in any form without the prior written permission of Nokia is prohibited.

Nokia and Nokia Connecting People are registered trademarks of Nokia. Other product and company names mentioned herein may be trademarks or tradenames of their respective owners.

Nokia operates a policy of continuous development. Nokia reserves the right to make changes and improvements to any of the products described in this document without prior notice.

Under no circumstances shall Nokia be responsible for any loss of data or income or any special, incidental, consequential or indirect damages howsoever caused.

The contents of this document are provided "as is". Except as required by applicable law, no warranties of any kind, either express or implied, including, but not limited to, the implied warranties of merchantability and fitness for a particular purpose, are made in relation to the accuracy, reliability or contents of this document. Nokia reserves the right to revise this document or withdraw it at any time without prior notice.

## 1. INTRODUCTION

For reading and sending e-mail via the Nokia 7650 remote e-mail client, you need to have an Internet Access Point (IAP) configured to your Nokia 7650. For further information on how to configure IAPs please refer to the user guide.

You also need to have an e-mail account that supports SMTP protocol for sending e-mail, and POP3 or IMAP4 protocol for receiving e-mail

Your service provider may be able to send some or all of the required settings to you via a special short message called an Over The Air (OTA) message. After you have received and saved the settings, you can start using the e-mail application or edit the settings as described below.



**Note:** The necessary settings for mail configuration are provided by your e-mail Service Provider. Depending on your Service Provider you may not need to fill in all of the settings. If your mail settings are incomplete or incorrect, please contact your Service Provider. An e-mail service provider can be your employer or a commercial ISP, for example.

## 2. EMAIL ACCOUNT SETTINGS ON PHONE

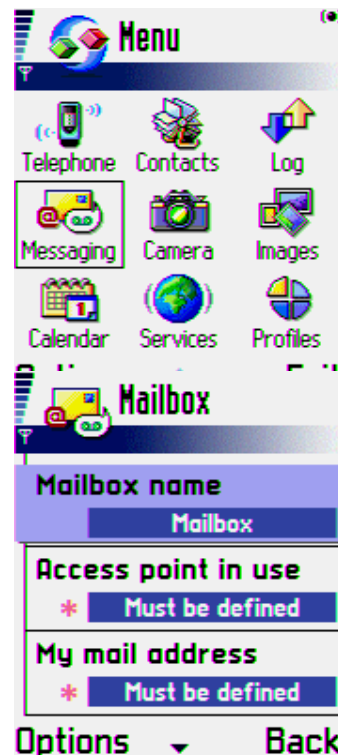
In order to connect to your electronic mailbox service, you need to define your remote mailbox on your Nokia 7650.

1. Open the Messaging folder..
2. Press **Options** and select **Settings** from the list.
3. Highlight **E-mail** and press the joystick to select it.
4. Press the joystick when the focus is on Mailboxes.
  - If there is no mailbox defined you will get pop-up asking if you want define it now. Press **Yes**.
  - If you already have defined mailbox you will get a list of mailboxes. To define new mailbox press **Options** and select **New mailbox** from the list.



**Note:** All fields marked with \* are mandatory fields and you must fill these fields.

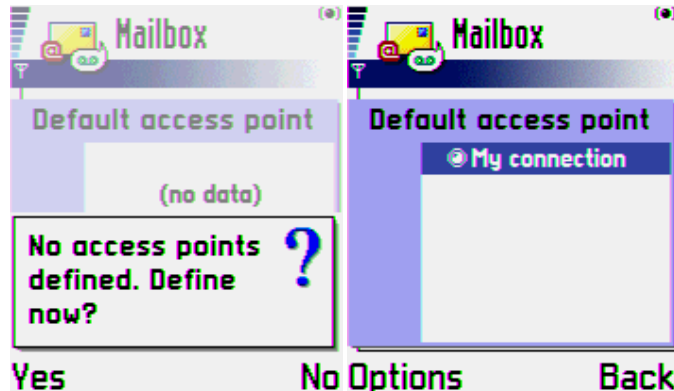
5. **Mailbox name:** Enter the name of the remote mailbox under *Mail account name*. The name can be entered freely (e.g. My mail, John's mail etc.).
6. **Access point in use:** Choose from the list containing all available IAPs. Note that you must be able to connect to the remote mailbox via the given IAP. For example, if



you are accessing your company's intranet mailbox, you may need to use the Internet Access Point for your company's intranet.



**Note:** If there is no IAP defined you will get a pop-up asking if you want to define it now. . For further information how to configure IAPs please refer to the user guide.



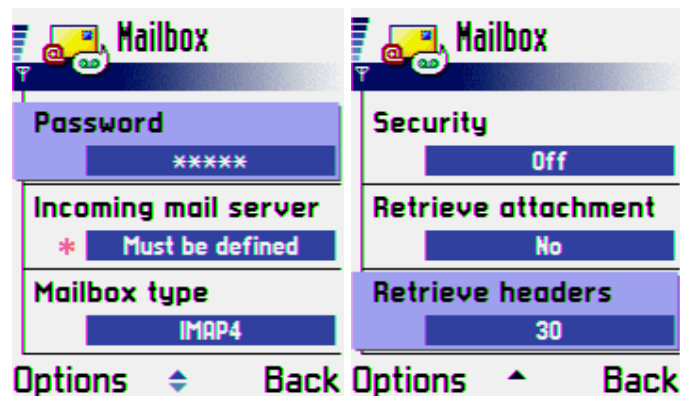
**Note:** You can use WAP access point if your mail service allows it.

7. **My mail address:** Type in the e-mail address given to you by your service provider. The address must contain the @ character. This address will be shown as the originating (From) address in your messages.
8. **Outgoing mail server:** Enter the *Outgoing mail server* IP address or host name. This is also known as the SMTP server, sending server, or mail relay. When you are sending e-mail, your Nokia 7650 connects to this server and sends the mail. This server will then relay the mail towards the recipient's mail server. The outgoing mail server should be in one of the following example formats - 123.123.123.123 or mail.server.com.
9. **Send message:** Options are **Immediately** (Immediately makes connection and sends message automatically) or **During next connection** (mail is saved to Outbox and it will sent when you are connected to remote mailbox next time (or you can go to Outbox and send it manually (**Options,>send**)))
10. **Copy to own mail address:** Select whether you want to send a copy of sent mail to your own mail address. The options are **Yes / No**.
11. **Signature file:** Select whether your signature is attached to sent mail. The options are **Yes / No** (if selecting Yes you can then create a signature file for mails you send)
12. Type **Your name, Username and Password**.



**Tip:** Usually the name and password are the same ones you use for your Internet Access Point (PPP authentication). However, if your e-mail Service provider is different from the Internet Service Provider, this may not be the case. Note that both the username and password are case-sensitive (capitalisation of letters matters). If you do not specify a password, you will be prompted for one when you try to read mail in your remote mailbox.

13. **Incoming mail server:** Enter the *Incoming mail server* IP address or host name. This is also known as the IMAP or POP server (depending on the account type) or the remote mailbox server. When you receive mail, the mail will be stored on this server. During mail retrieval, your Nokia 7650 connects to this server in order to download
14. **Mailbox type:** Select *Mail account type* (**POP3** or **IMAP4**). This defines the mail protocol your mailbox service provider recommends. POP may be slightly faster in some situations, but IMAP gives the user more control over the mailbox and mail retrieval



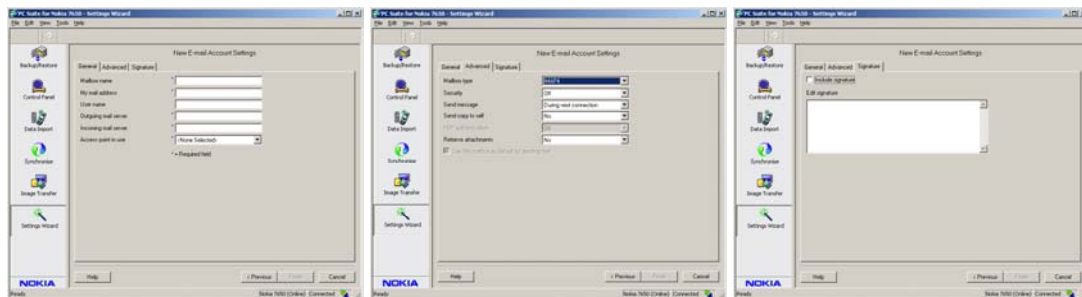
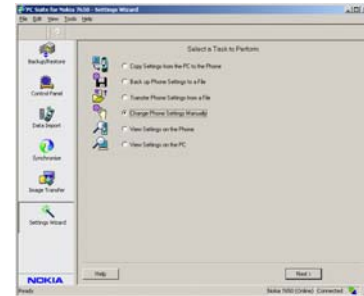
15. **Security:** The options are **On / Off**. Please check with your e-mail service provider whether this option can be used.
16. **APOP secure login :** The options are **On / Off**. Please check with your e-mail service provider whether this option can be used. This option is available only if your mailbox type is POP3.
17. **Retrieve attachment:** The options are **Yes / No** (if you want possible attachment to be fetched automatically, when received mail message is fetched. Takes more time naturally.). This option is available only if your mailbox type is IMAP4.
18. **Retrieve headers :** Here you can define how many mail headers are displayed in your mailbox. The options are **All** or *a user-defined number*. This option is available only if your mailbox type is IMAP4
19. Press **Back** to save remote mailbox settings.
20. Press **Back** a few times to get back to Messaging application main view.

You have now set up a mail account.

### 3. EMAIL ACCOUNT SETTINGS WITH PC SUITE

You can enter same settings to your Nokia 7650 using Settings Wizard in PC Suite for Nokia 7650.

1. Open PC Suite for Nokia 7650 and connect your phone to your PC via Bluetooth or infrared
2. Select **Settings Wizard** from left side toolbar.
3. Press **Next** button
4. Select **Change Phone Settings Manually** and press **Next** button
5. Select **E-mail Accounts** and press **Next** button
6. Select **Add a New E-mail Account** and press **Next** button
7. If you already have E-mail account defined on your Nokia 7650 you will get an option to copy existing mail account or create new account from scratch.
8. Now you can enter settings to the PC Suite.



9. When account is ready press **Finish** button to send the account to your Nokia 7650.

You have now set up a mail account.