

NOKIA 7650



SUPPORT GUIDE FOR INSTALLING NOKIA 7650 TO MODEM IN WINDOWS 2000

NOKIA



Contents

- 1. INTRODUCTION 1
- 2. INSTALLING MODEM OPTIONS FOR NOKIA 7650 1
 - 2.1 INSTALLING BLUETOOTH MODEM: 2
 - 2.2 INSTALLING INFRARED MODEM: 3
- 3. STARTING NOKIA MODEM OPTIONS 4

Legal Notice

Copyright © Nokia 2002. All rights reserved.

Reproduction, transfer, distribution or storage of part or all of the contents in this document in any form without the prior written permission of Nokia is prohibited.

Nokia and Nokia Connecting People are registered trademarks of Nokia Corporation. Other product and company names mentioned herein may be trademarks or tradenames of their respective owners.

Nokia operates a policy of continuous development. Nokia reserves the right to make changes and improvements to any of the products described in this document without prior notice.

Under no circumstances shall Nokia be responsible for any loss of data or income or any special, incidental, consequential or indirect damages howsoever caused.

The contents of this document are provided "as is". Except as required by applicable law, no warranties of any kind, either express or implied, including, but not limited to, the implied warranties of merchantability and fitness for a particular purpose, are made in relation to the accuracy, reliability or contents of this document. Nokia reserves the right to revise this document or withdraw it at any time without prior notice.

1. INTRODUCTION

Modem Setup for Nokia 7650 will install the following components on your computer:

- Nokia 7650 data and fax modem drivers which enable you to use your phone as a modem in data and fax calls
- Nokia Modem Options which enables you to set options for the data calls you make

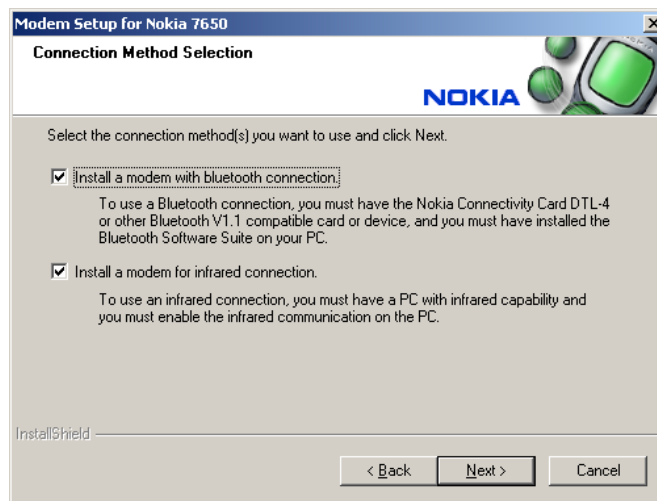
2. INSTALLING MODEM OPTIONS FOR NOKIA 7650

1. From the CD-ROM main menu, click **Software for PC** and then click **Modem Options for Nokia 7650**. Click **Install**.
2. Follow the instructions on the screen.



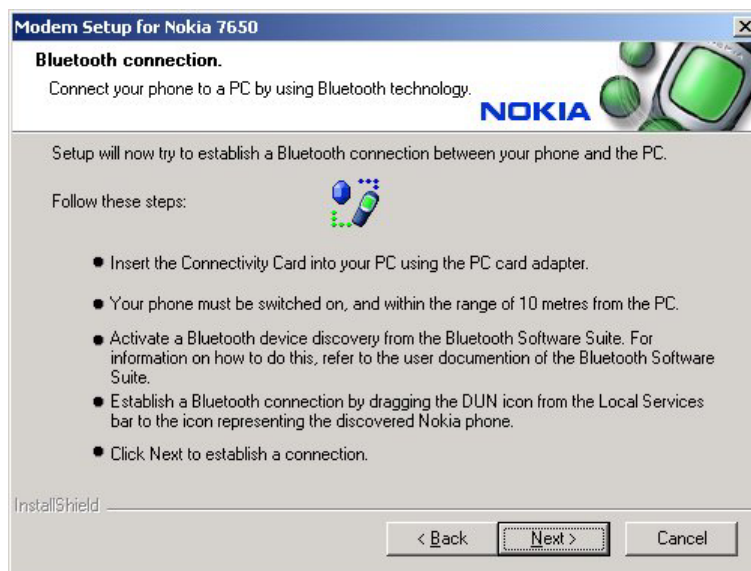
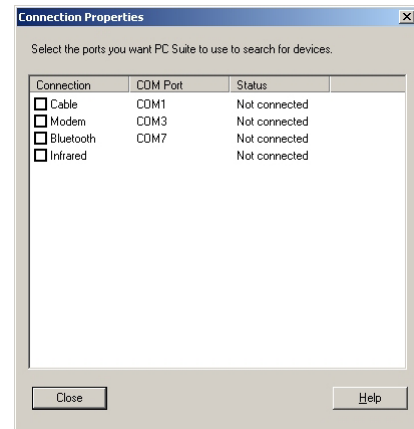
In the **Connection Method Selection** dialog box, you are prompted to select one or more of the available connection methods:

- Infrared connection (provided that your computer has infrared capabilities), and/or
- Bluetooth connection (provided that a Bluetooth card and the associated software are installed on your PC).



2.1 INSTALLING BLUETOOTH MODEM:

1. Disable Bluetooth from the Nokia 7650 PC Suite. You can use Bluetooth connection for one purpose at a time.
2. Activate Bluetooth on your Nokia 7650.
3. In the Bluetooth connectivity software, search for available Bluetooth devices
4. Activate Dial Up Network from your Bluetooth connectivity software (e.g. drag DUN icon up to your phone if you are using Nokia DTL-4 Bluetooth card and Bluetooth Neighbourhood software).
5. Press next to start Nokia modem options installation.



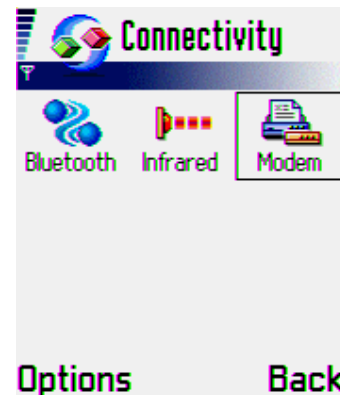
6. Bluetooth modem installation automatically installs the modem now. This operation may take few minutes.



If you have select only Bluetooth modem installation you will now get an information windows. Press Next to continue the installation. When the installation is complete, you must restart your PC when you are asked to do so.

2.2 INSTALLING INFRARED MODEM:

1. Disconnect any Bluetooth connections between your Nokia 7650.
2. Activate Modem over Infrared from your Nokia 7650 (Go to **Connect > Modem > Options, Connect**)
3. Place phone and PC Infrared port facing each other
4. Press **Next** to start modem installation
5. Infrared modem installation install automatically modem now. This operation may take few minutes.
6. After PC has found Nokia 7650 modem from Infrared port you will get an information window. Press **Next** to continue installation



7. To finalize installation you must restart your PC when it is asked.



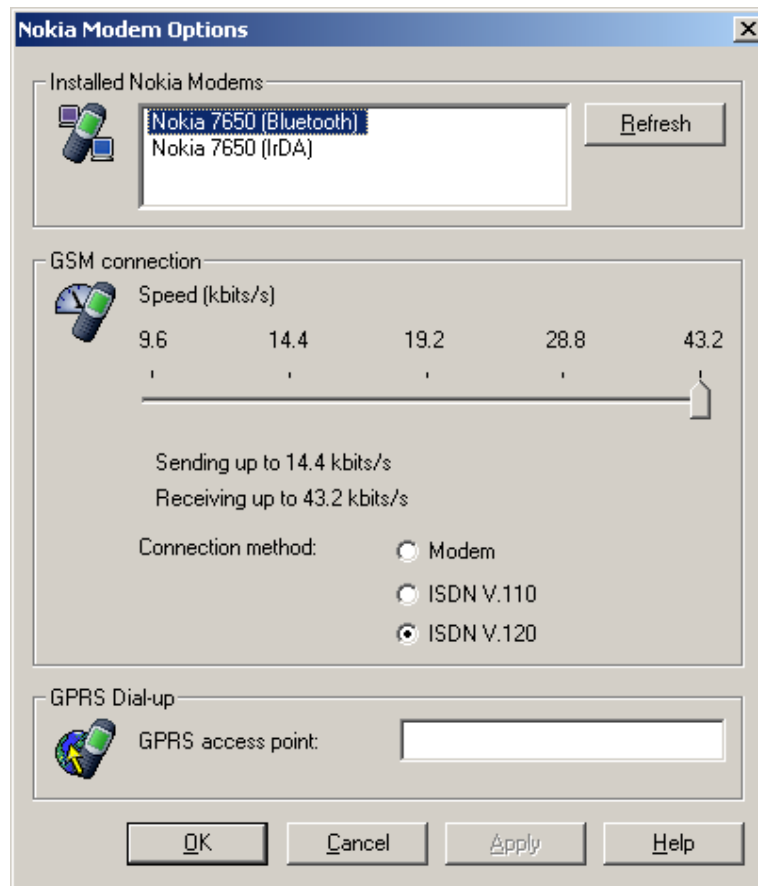
Note: When you use your phone for making data or fax calls, the infrared connection is available for Windows 98/Me/2000/XP only.

3. STARTING NOKIA MODEM OPTIONS

You can start Nokia Modem Options from the Control Panel:

Click the **Start** button, point to **Settings**, and click **Control Panel**.

In the Control Panel, double-click **Nokia Modem Options**.



You can change data call settings even when your phone is not connected to the computer. To change settings, select the correct Nokia modem first. You should receive information on the correct data speed and connection method from your service provider.



Note: GPRS is a technology that allows mobile phones to be used for sending and receiving data over the mobile network. The use of GPRS services requires that your network supports GPRS (General Packet Radio Service) technology and that you have subscribed to this service. The pricing of GPRS services may differ from that of normal GSM data services. Contact your service provider for more information.



Note: The use of GSM high-speed data services requires that your network supports HSCSD (High Speed Circuit Switched Data) technology and that you have subscribed to this service. GSM high-speed data services may cost more than normal GSM data services. Contact your service provider for more information.



Note: Since Bluetooth devices communicate using radio waves, your phone and the other Bluetooth device do not need to be in line of sight. The two devices only need to be within a maximum of 10 metres of each other, although the connection can be subject to interference from obstructions such as walls or from other electronic devices.

In some countries, there may be restrictions on using Bluetooth devices. Check with your local authorities.