

NOKIA 7650



SUPPORT GUIDE FOR WAP ACCESS POINT SETTINGS IN NOKIA 7650

NOKIA



Contents

- 1. INTRODUCTION 1
- 2. HOW TO CREATE NEW WAP ACCESS POINT 1
 - 2.1 USING GSM DATA OR HIGH SPEED ACCESS POINT 2
 - 2.2 USING GPRS ACCESS POINT 4
 - 2.3 ADVANCED SETTINGS 4
- 3. CONFIGURE WAP ACCESS POINT WITH PC SUITE 6

Legal Notice

Copyright © Nokia 2002. All rights reserved.

Reproduction, transfer, distribution or storage of part or all of the contents in this document in any form without the prior written permission of Nokia is prohibited.

Nokia and Nokia Connecting People are registered trademarks of Nokia Corporation. Other product and company names mentioned herein may be trademarks or tradenames of their respective owners.

Nokia operates a policy of continuous development. Nokia reserves the right to make changes and improvements to any of the products described in this document without prior notice.

Under no circumstances shall Nokia be responsible for any loss of data or income or any special, incidental, consequential or indirect damages howsoever caused.

The contents of this document are provided "as is". Except as required by applicable law, no warranties of any kind, either express or implied, including, but not limited to, the implied warranties of merchantability and fitness for a particular purpose, are made in relation to the accuracy, reliability or contents of this document. Nokia reserves the right to revise this document or withdraw it at any time without prior notice.

1. INTRODUCTION

To obtain access to WAP services

- You must be within the coverage of a network which supports data calls,
- A data service must be activated for your SIM card,
- You must have obtained a WAP access point from a WAP service provider, and
- You must have entered the proper WAP settings.

Before you can use the WAP services, you need to configure your WAP access point settings. Your WAP service provider will provide you with the exact values for the WAP access point settings. Follow the instructions carefully. You can use this information to define and edit the settings manually.

Also, your service provider may be able to send some, or all, of the required settings to you via a special short message called an Over The Air (OTA) message. After you have received and saved the settings, you can start using the WAP application or edit the settings as described below.



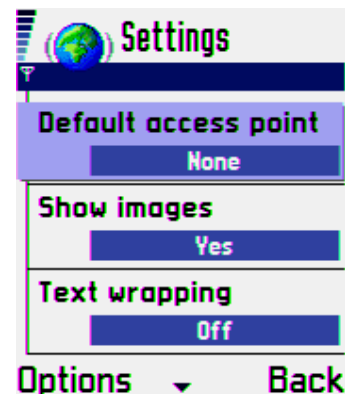
Note: To be able to use *High speed* (refers to HSCSD [High Speed Circuit Switched Data]) or *GPRS* (*general packet radio service*), the network service provider has to support these features, and if necessary, to activate them for your SIM card. When using High speed or GPRS, extra charges may apply, even for received data calls within your home network. Check with your network service provider for details on their pricing.



Note: The necessary settings for WAP configuration are provided by your WAP Service Provider. Depending on your service provider, you may not need to fill in all of the settings

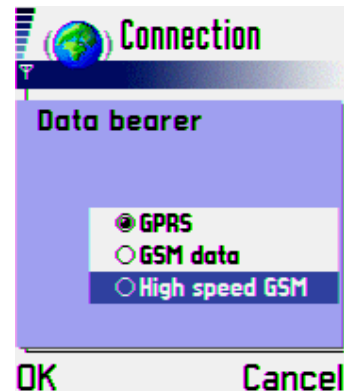
2. HOW TO CREATE NEW WAP ACCESS POINT

1. Open the **Services** application
2. Press the **Options** button and select **Settings**.
3. Highlight **Default access point** and press **Selection key**. You will get pop-up "No access points defined. Define now?" Press **Yes**.





Note: If there is access point already defined, the list of Wap access points is opened. Select the access point you want to modify and press **Options** and select **Edit**. If you want to create a new access point press **Options** and **New access point**.

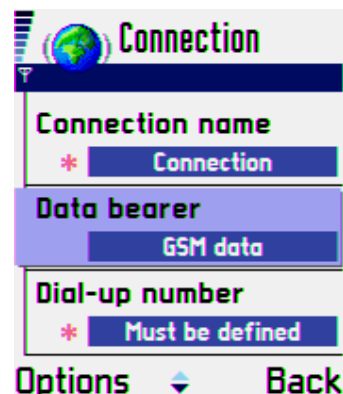


Note: To enter information to fields such as user name or password press **Options** and **Change**. To all field marked by * are mandatory field.

4. Enter the name of the connection (e.g. service provider name)
5. Define in the **Data bearer** field what kind of connection type you are using. This setting may depend on both your GSM network operator and ISP, because some GSM networks do not support certain types of ISDN connections. For details, contact your ISP and network provider. ISDN connections are preferable to analogue connections because they offer considerably faster data call establishment (often about twenty seconds faster than with analogue connections), and offer higher data transfer speeds as the connection is fully digital from end to end. On the other hand, if you have problems establishing a data call (for example, when roaming outside your home network), using analogue connections may help you to establish a connection. Options are **GPRS**, **GSM data** and **High speed GSM**.

2.1 USING GSM DATA OR HIGH SPEED ACCESS POINT

1. Type the service provider dial-up number in the next field.
2. Move focus to **User name** and press the joystick. Enter your user name and press **Ok**.
3. Set **Password prompt** to **Yes** if you want to type in your password every time you log in. Select **No** to save your password in your Nokia 7650 and automate the login procedure. If you are using one-time passwords (such as RSA SecurID or OTP), select **Yes**.
4. Enter your password in **Password** field and press **Ok**.



Tip: If your password contain numbers you can easily insert them with long key press

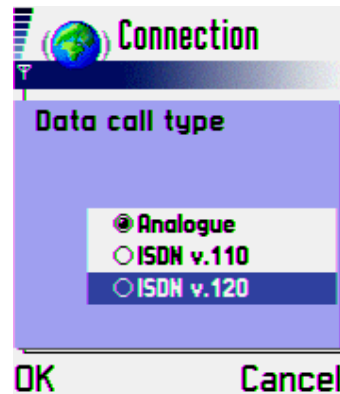
5. In **Authentication** options you can select **Secure** if your Dial-up server needs secure authentication on connection otherwise, select **Normal**
6. Type your service provider **WAP gateway address** in the next field.



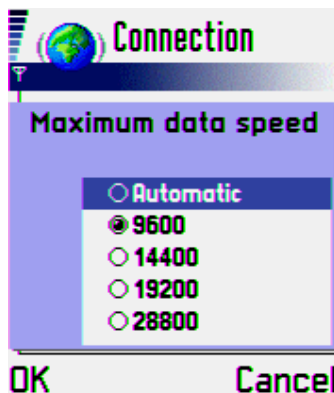
Note: If the access point does not have a WAP gateway address, it does not show in the access point list in WAP settings.

7. Enter the homepage of your service provider address in the **Homepage** field. This address will also be first on the bookmark list.

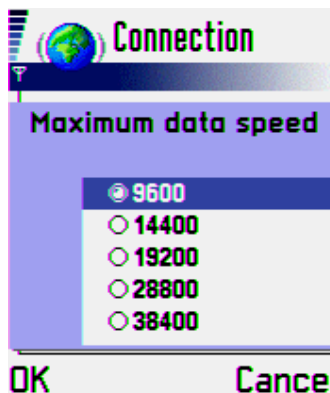
8. Select **Data Call type**. This setting may depend on both your GSM network operator and ISP, because some GSM networks do not support certain types of ISDN connection. For details contact your ISP and network provider. ISDN connections are preferable to analog connections because they offer considerably faster data call establishment (often about twenty seconds faster than with analog connections), and offer higher data transfer speeds because the connection is fully digital from end to end. On the other hand, if you have problems establishing a data call (for example, when roaming outside your home network), using analog connections may help you to establish a connection.



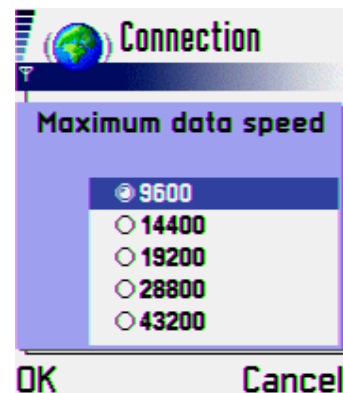
9. Set the **Maximum data speed**. Different, higher connection speeds are available with different combinations of High speed settings. Higher data rates may cost more, depending on the network service provider. The speed indicated here is the maximum speed that will be used. The true data transfer speed depends on congestion in the internet, the type of data you are downloading, whether you are running other applications on the Nokia 7650, the congestion in the mobile phone network and on your location in the mobile phone network. In poor reception areas, the network may choose to use a significantly lower transmission speed



HSCSD Analogue



ISDN V.110/ISDN

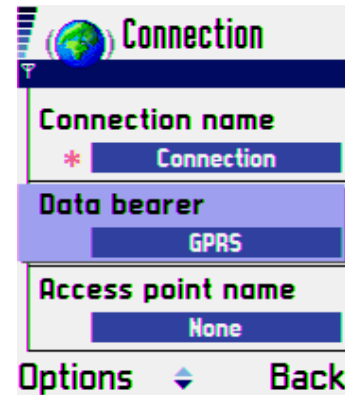


V.120 speed options

10. From **Connection secure** you can change secured connection to **on** or **off**.
11. The last field is **Session mode**. Options are **Permanent** or **Temporary**.

2.2 USING GPRS ACCESS POINT

1. Type name for access point
2. Move focus to **User name** setting and press the joystick. Type your user name and press **Ok**.
3. Set **Password prompt** to **Yes** if you want to type in your password every time you log in. Select **No** to save your password in your Nokia 7650 and automate the login procedure. If you are using one-time passwords (such as RSA SecurID or OTP), select **Yes**.
4. Type your password to **Password** field and press **Ok**.



Tip: If your password contain numbers you can easily insert them with long key press

5. In **Authentication** options you can select **Secure** if your Dial-up server needs secure authentication on connection. If not, select **Normal**
6. Type the **WAP gateway address** of your service provider in the next field.



Note: If the access point does not have a WAP gateway address, it does not show in access point list in WAP settings.

7. Enter your service provider homepage address in the *Homepage* field. This address will also be first on bookmark list.



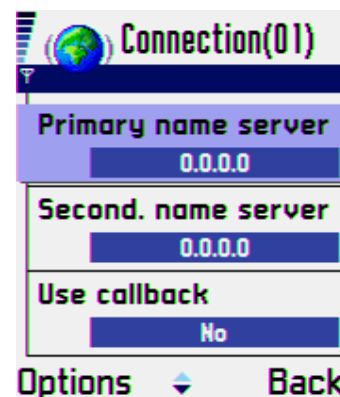
Note: The following two selections are not available if you are using GPRS as a *Data Bearer*.

8. From **Connection secure** you can change secured connection setting to **on** or **off**.
9. Last field is *Session mode*. Options are **Permanent** or **Temporary**.

2.3 ADVANCED SETTINGS

If your service provider requires fixed IP address or DNS address (Domain Name Server) you also must enter them in the settings on the Nokia 7650. To enter these settings press **Options** and select **Advanced settings**.

1. If your service provider uses **fixed IP address** you can enter it in the **Phone IP address** field. If you are using a **Dynamic IP address** and you have entered some IP value in this field by accident enter 0.0.0.0 to *Phone IP address*. This will clear the incorrect IP address. Dynamic IP address is may also be called Floating IP address
2. Enter the **Primary name server** and **Secondary name server** addresses in the next two fields. Your service provider may call these servers DNS (Domain name server).





Note: If you are using GPRS, the following options are not available.

3. If your service provider is using Callback select **Yes** in *Call back* field

This option allows a server to call you back once you have made the initial call, which means in most countries that a connection is established without your having to pay for the call. Contact your ISP to find out whether this service is available and to subscribe to this service. If you are roaming outside your home network or use high-speed data calls, you may still have to pay for part of the call.



Note: Most public ISPs do not support callback. The most common callback users are companies and other private dial-up systems that require increased security.

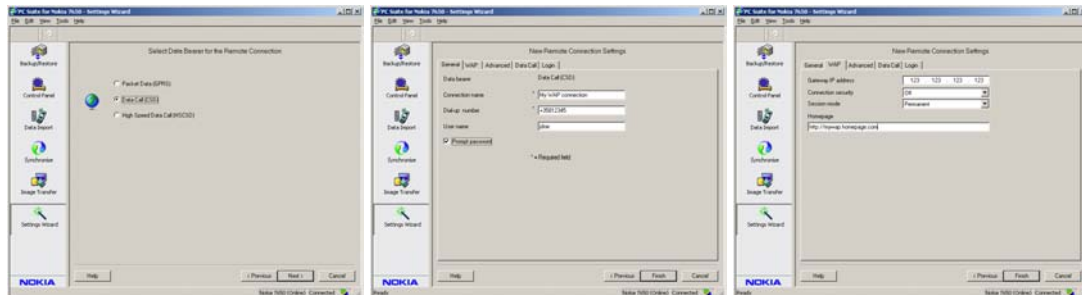
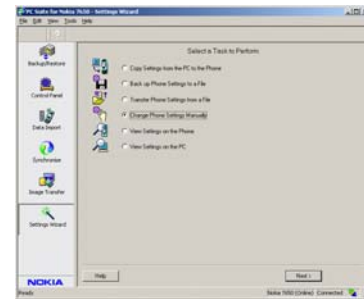
4. **Callback type** options are **use server no** and **use other no**.
5. If you selected **Use other no**, type in your **Callback number**. This number is usually the data call phone number (not the voice number) of your Sim card. This is used when using callback protocol in a mode where the client specifies the number to call back

Congratulations. You have made new WAP access point. Press **Back** as many times as is needed to get back to WAP browser.

3. CONFIGURE WAP ACCESS POINT WITH PC SUITE

You can enter the same settings to your Nokia 7650 using the Settings Wizard in PC Suite for Nokia 7650.

1. Open PC Suite for Nokia 7650 and connect your Nokia 7650 to your PC via Bluetooth or infrared
2. Select **Settings Wizard** from left side toolbar.
3. Press the **Next** button
4. Select **Change Phone Settings Manually** and press the Next button
5. select **Remote connections** and press the **Next** button.
6. Select **Add a New Remote connection** and press the **Next** button
7. If you already have Remote connection defined on your Nokia 7650 you get an option to **Copy existing Remote connection** or **Create new one from scratch**.
8. Select **Data bearer** for new connection and press the **Next** button.



9. When the account is ready press the **Finish** button to send the access point to your Nokia 7650.

You have now set up a WAP access point