



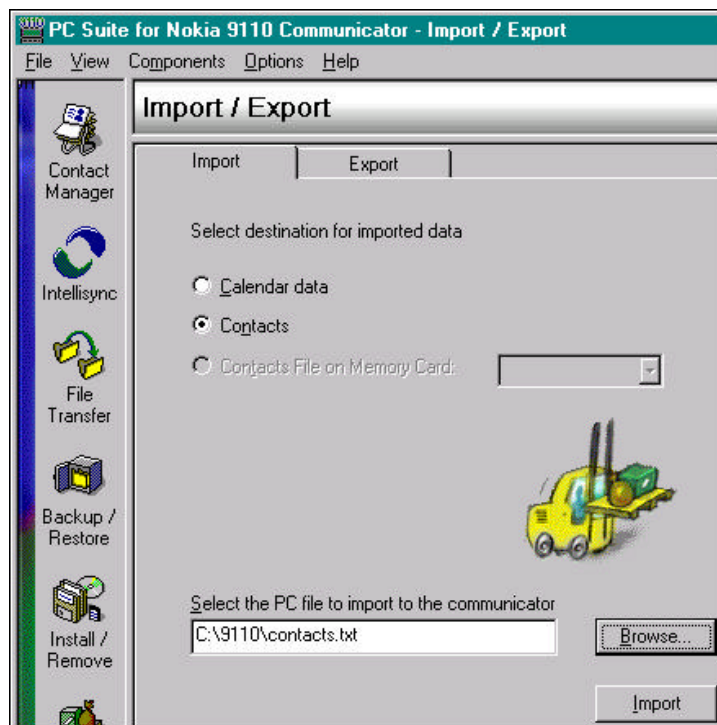
Import / Export with the PC Suite for Nokia 9110 Communicator

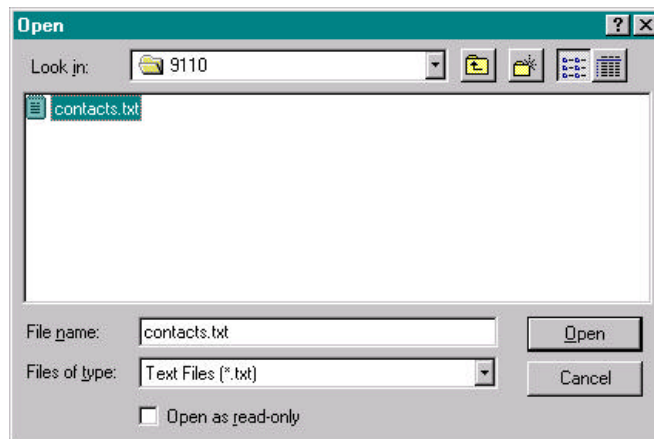
1. BASIC FEATURES

The Import / Export feature in the PC Suite for Nokia 9110 Communicator is for transferring calendar data and contacts as ASCII (*.txt) files between the communicator and PC. These transferred text files has special formats for the saved data and you can view the format by opening these files with some text editor like e.g. Notepad or Wordpad. For transferring contact or calendar files under Windows 3.x or Macintosh operating system you need to use the NServer software and Import / Export application under the System menu in the communicator.

2. IMPORT CALENDAR DATA AND CONTACTS

Select do you want to import calendar or contacts or contacts file on memory card to the communicator or Memory Card with the radio buttons from the PC Suite Import / Export application and Import tab. Select the file you want to import with typing the filename and path or by browsing to the correct directory and file.

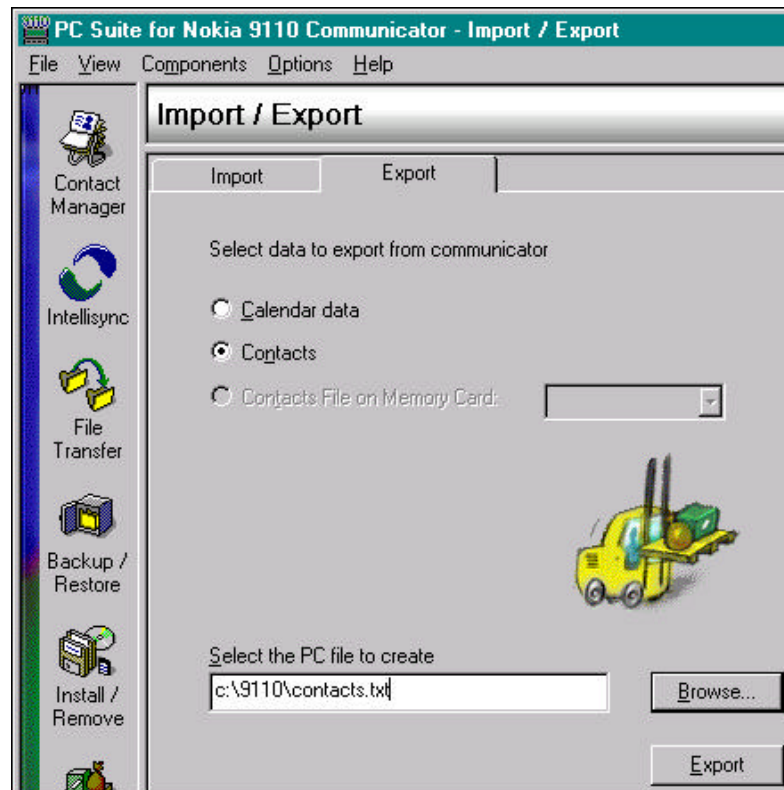




NOTE! If you import the calendar file to the communicator it will overwrite the existing calendar that you have stored in the communicator memory. The contacts does not overwrite old contacts in the communicator. If you have the same contacts in both files but they have some differencies (e.g. extra phone number) you will have these contacts as both versions and it may look like duplicate in the contacts directory of your communicator.

3. EXPORT CALENDAR DATA AND CONTACTS

If you want to Export calendar data or contacts from the communicator or Memory Card to the PC choose the Import / Export application and Export tab. These files file be exported as ASCII text files (*.txt). Select the data that you want to export, Calendar or Contacts or Concaacts File on Memory Card and type in or browse the path and filename where you want to save the exported file on your PC (e.g. C:\9110\contacts.txt).



4. TROUBLESHOOTING

Q: I had a contacts file in my communicator and I Imported some old contacts from the PC. Why some contacts have been duplicated?

A: You have had these contacts in both the PC file and in the communicator contacts list. The contacts that are exactly the same in both PC file and communicator will not be duplicated but if you have added e.g. address these contacts will not match 100% anymore and that will cause duplicates. This can be caused also by difference in empty fields that has no data can be changed if you have made some changes to the contact card template.

Q: I had my calendar full of events and I Imported some older events from the PC. Why all my calendar events in the communicator are lost?

A: If you Import a calendar file from PC it will overwrite the calendar in the communicator completely.

Legal Notice

The contents of this document are copyright © 1995 – 1999 Nokia. All rights reserved.

Reproduction, transfer, distribution or storage of part or all of the contents in any form without the prior written permission of Nokia is prohibited.

Nokia is a registered trademark of Nokia Corporation. Nokia's product names are either trademarks or registered trademarks of Nokia. Other product and company names mentioned herein may be trademarks of their respective owners.

The contents of this document is provided "as is". Except as required by the applicable law, no warranty of any kind, either express or implied, is made in relation to the accuracy, reliability or content of the document. Nokia reserves the right to revise the document or withdraw it at any time without prior notice.

Nokia is not responsible for any lost of data, income or any consequential damage howsoever caused.