

NOKIA 9210 Communicator



SUPPORT GUIDE FOR SYNCHRONIZING E-MAIL, CALENDAR AND CONTACT WITH NOKIA 9210 COMMUNICATOR

NOKIA

Contents

1. INTRODUCTION	1
2. CREATE NEW TASK	1
2.1 CALENDAR	2
2.2 CONTACTS	5
2.3 E-MAIL	7
3. RUN TASK	10

Legal Notice

Copyright © Nokia Mobile Phones 2001. All rights reserved.

Reproduction, transfer, distribution or storage of part or all of the contents in this document in any form without the prior written permission of Nokia is prohibited.

Nokia and Nokia Connecting People are registered trademarks of Nokia Corporation. Other product and company names mentioned herein may be trademarks or tradenames of their respective owners.

Nokia operates a policy of continuous development. Nokia reserves the right to make changes and improvements to any of the products described in this document without prior notice.

Under no circumstances shall Nokia be responsible for any loss of data or income or any special, incidental, consequential or indirect damages howsoever caused.

The contents of this document are provided "as is". Except as required by applicable law, no warranties of any kind, either express or implied, including, but not limited to, the implied warranties of merchantability and fitness for a particular purpose, are made in relation to the accuracy, reliability or contents of this document. Nokia reserves the right to revise this document or withdraw it at any time without prior notice.

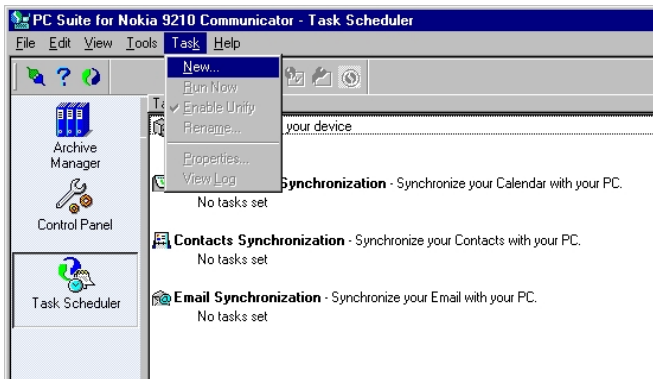
1. INTRODUCTION

The purpose of this document is to help you synchronize your Nokia 9210 Communicator's E-mail, calendar and contacts with a compatible PC, using the PC Suite for Nokia 9210 Communicator.

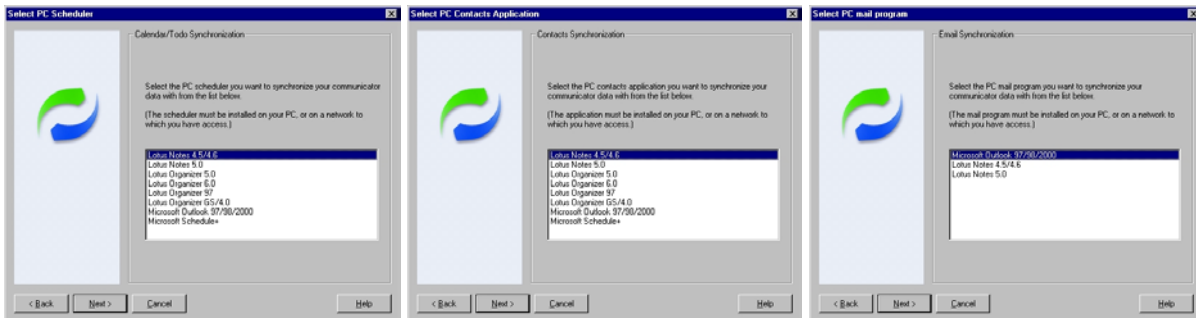
Synchronization is based on tasks. In these tasks, you define what kind of data you are going to synchronize. You select the PC software that you want to synchronize and specify all the details for it. Once you have made the task, you only need to run it when you are synchronizing your Nokia 9210 Communicator with the PC software.

2. CREATE NEW TASK

In the PC Suite for Nokia 9210 Communicator, first open the Task Scheduler. Select **New...** from the **Task** menu. From the Pop-up window you can select the kind of task you want to create (Contacts, Calendar or Email Synchronization).



Select the task type you want to create and press the **Next** button

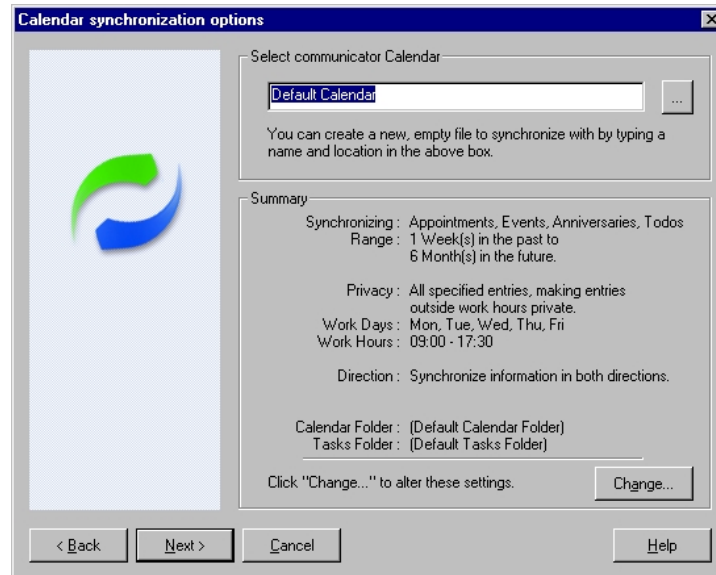


Select program into which you will synchronize your calendar, contacts or mail and press the **Next** button

2.1 CALENDAR

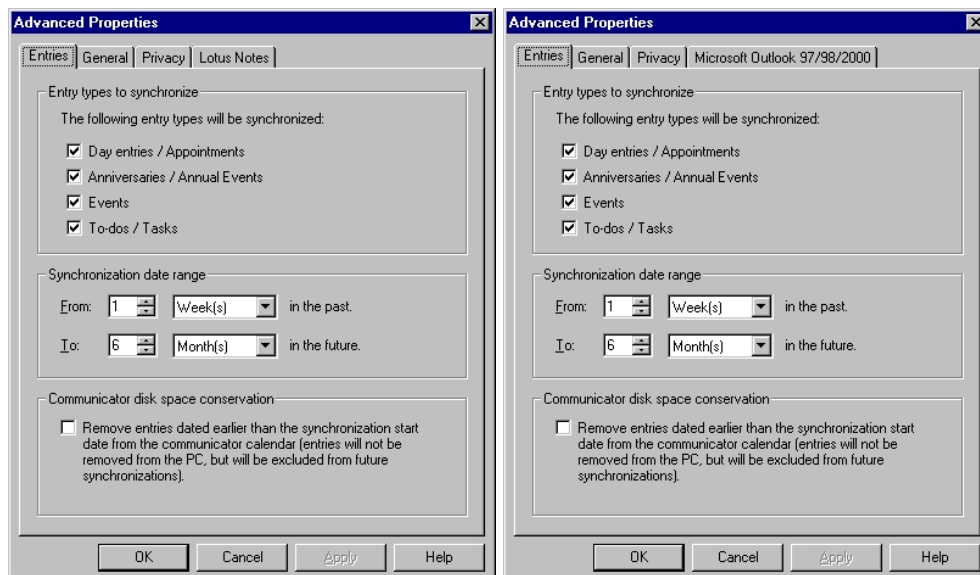
After PC software selection, the PC Suite for Nokia 9210 Communicator analyses the PC software you have selected. This takes a few seconds. The following window will then appear.

In the summary field you can see all the default details for this task. You can modify these settings by pressing the **Change** button or accept them by pressing the **Next** button.

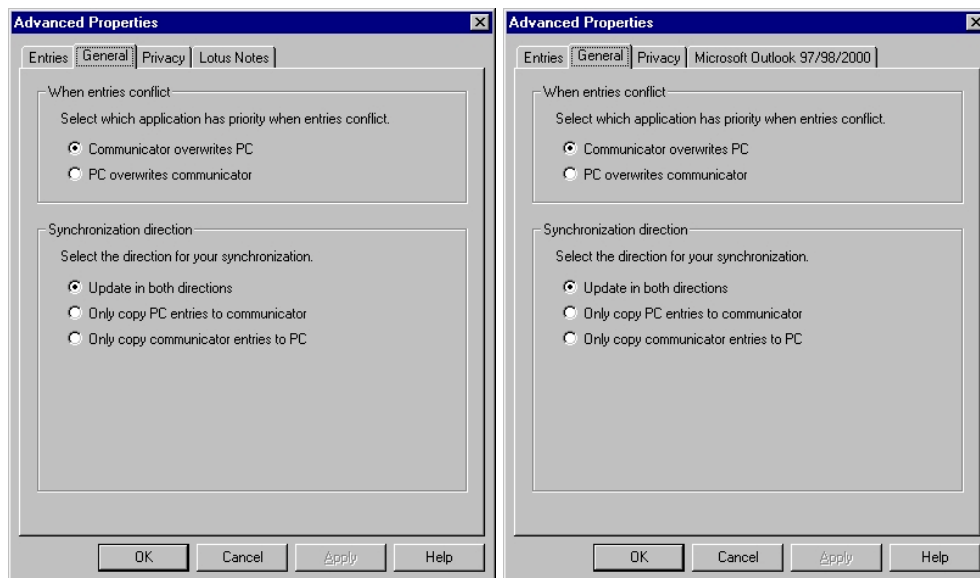


When you are modifying these settings you see the following screens.

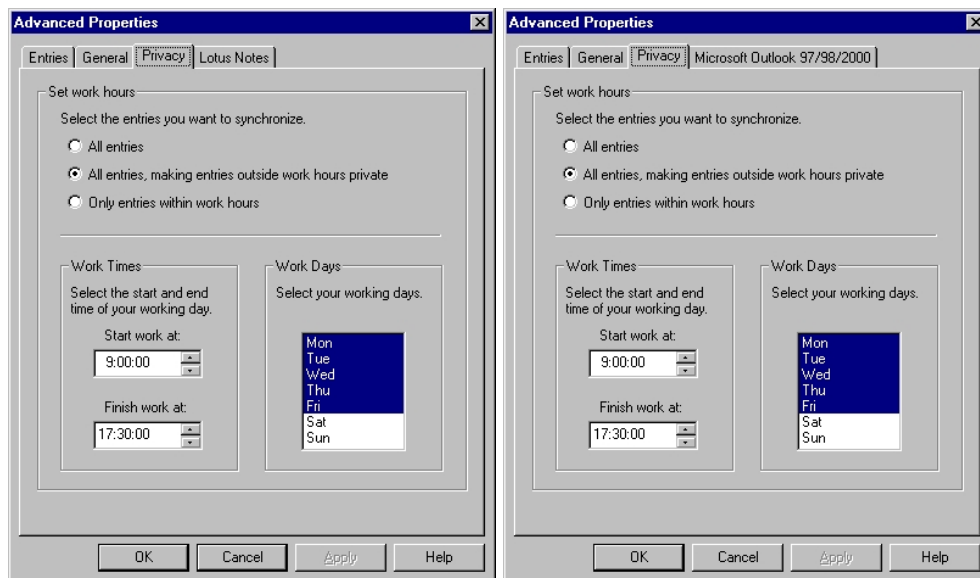
On the first sheet you can define what kind of data you will synchronize. Also, you can define the date range that you will synchronize.



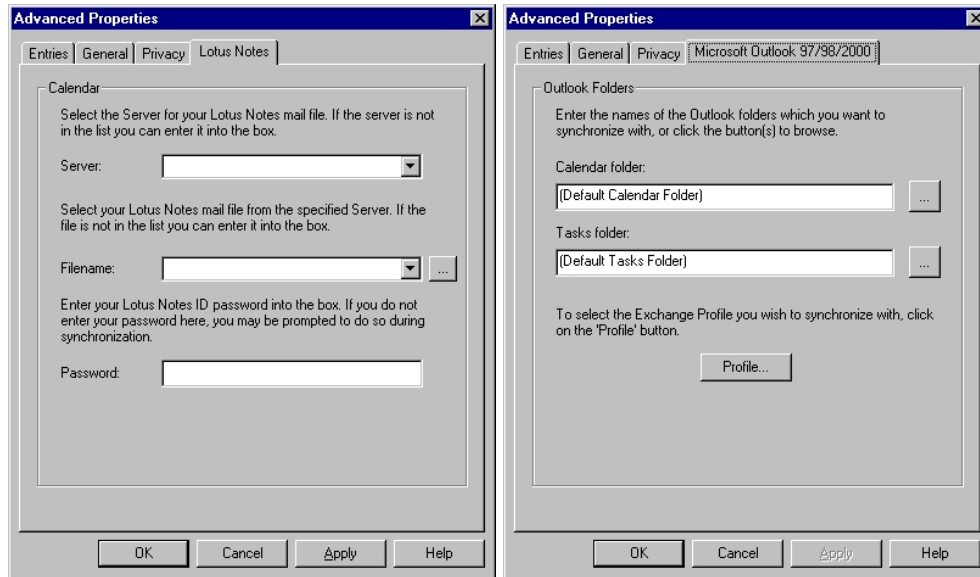
On the second sheet, you can define what will happen if there is a conflict between the PC and Nokia 9210 Communicator calendar data. You can also select the direction of the synchronization.



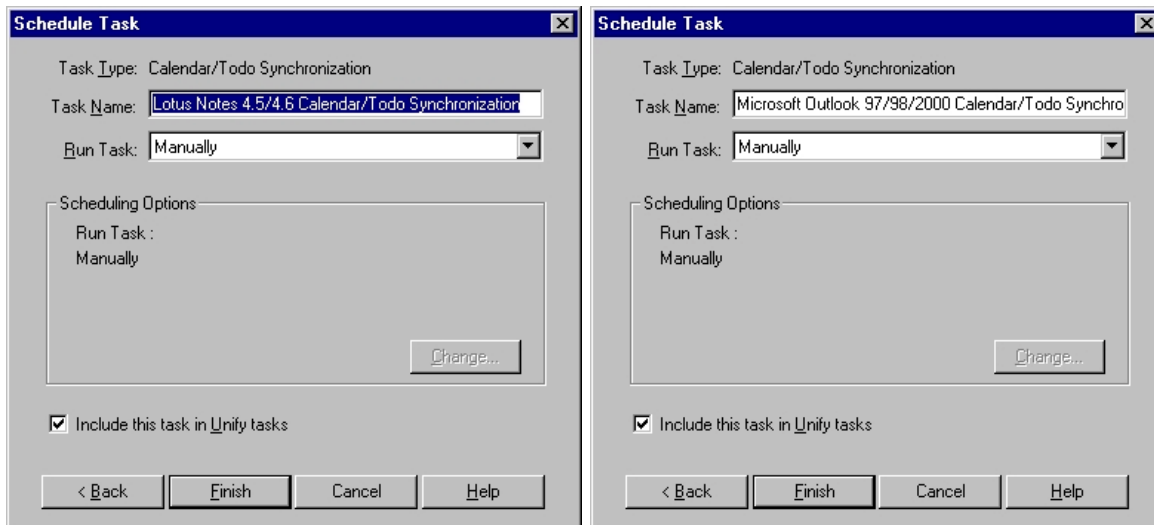
The third sheet contains the privacy settings.



The last sheet contains all the PC software specific settings. The layout of the sheet depends on which PC software you have selected. The figures below illustrate the Lotus Notes and the Microsoft Outlook sheets. Here you can specify the calendar location in the PC software, the profile settings and password, if it is required.



When the settings are correct in all the sheets, press the **OK** button to return to the previous screen and press the **Next** button to continue.



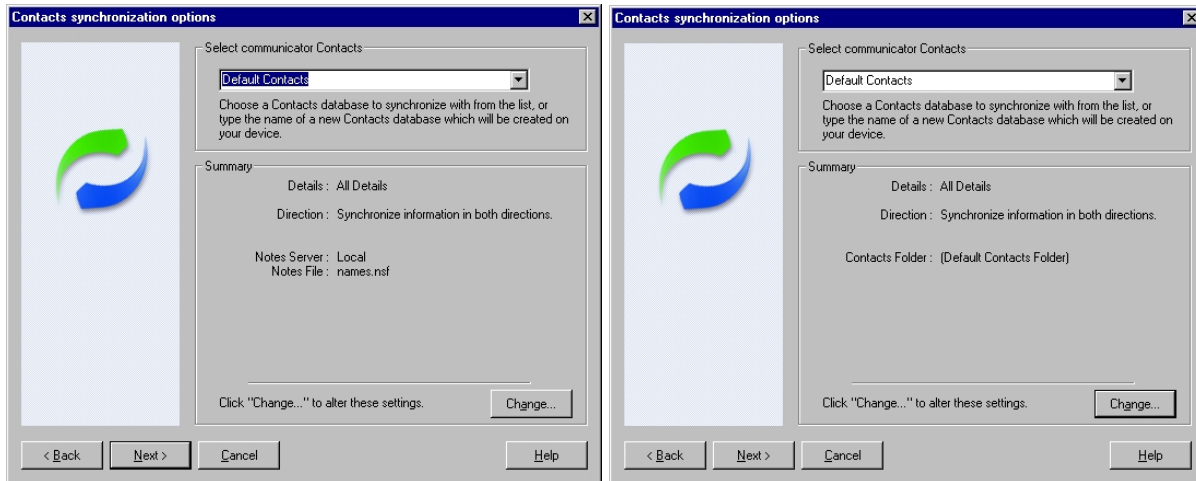
Now you can give a name to the task you just have created. Also, you can define how you want to run this task. The options for it are **Manually** (when you like), **On connection** (every time you connect your Nokia 9210 Communicator to your PC) or **At scheduled time** (e.g. every Monday at 9:15 if the Nokia 9210 Communicator is connected to your PC).

Press the **Finish** button when everything is ready.

2.2 CONTACTS

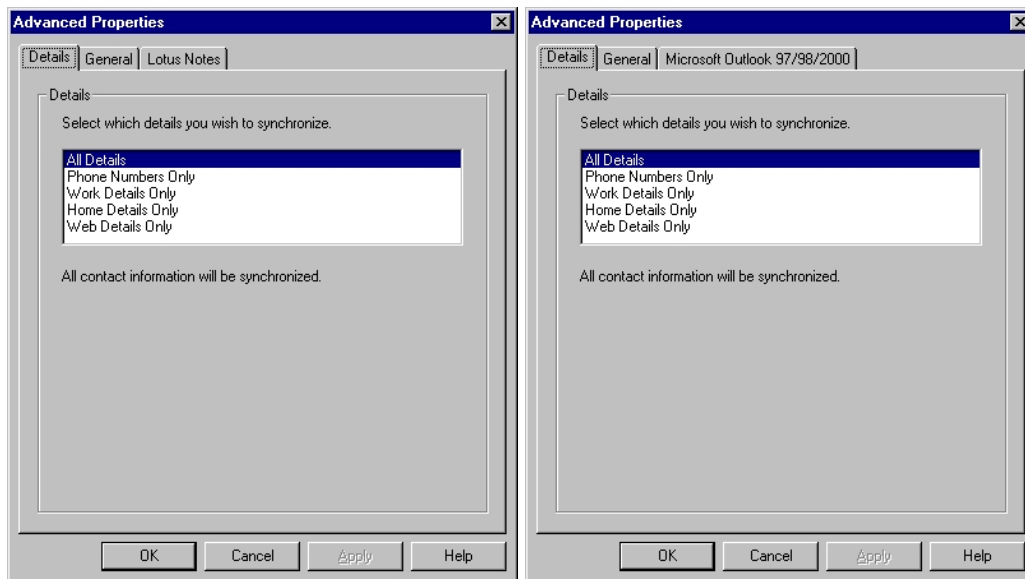
After PC software selection, the PC Suite for the Nokia 9210 Communicator analyses the PC software you have selected. This takes few seconds. The following window will then appear.

In the summary field you can see all the default details for this task. You can modify these settings by pressing the **Change** button or accept them by pressing the **Next** button.

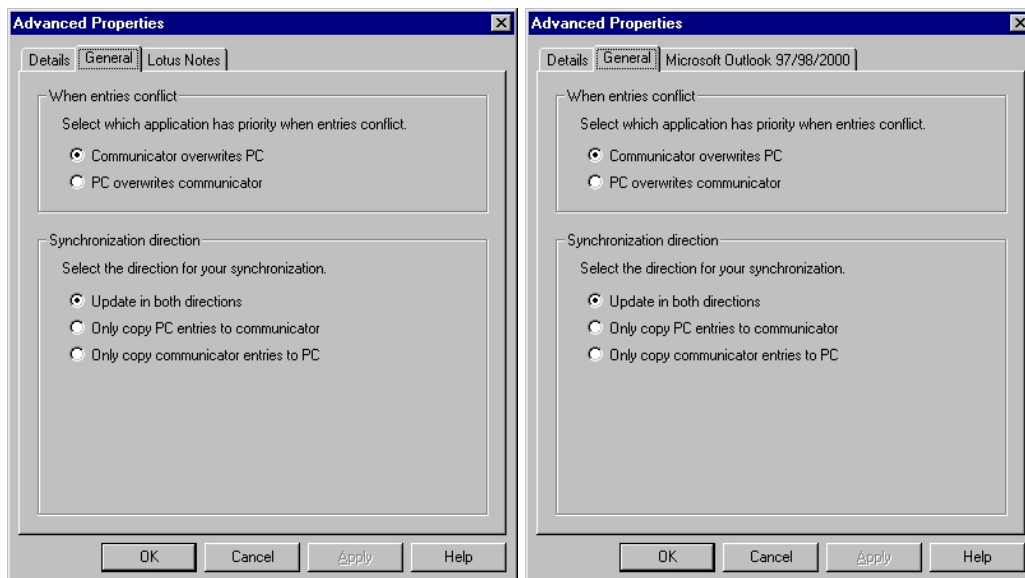


When you are modifying these settings you will see the following screens.

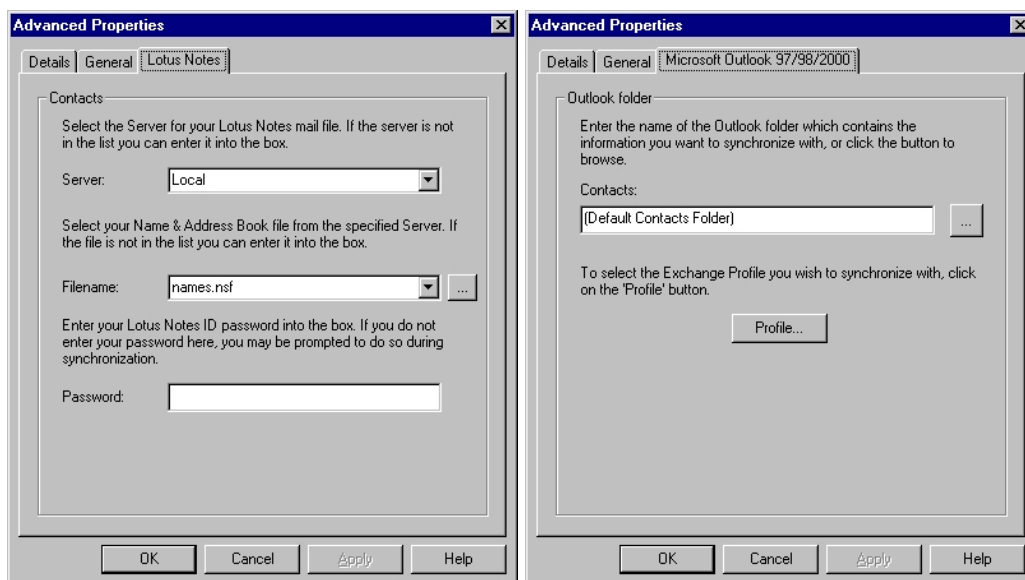
On the first sheet, you can specify what kind of contacts data you want to synchronize.



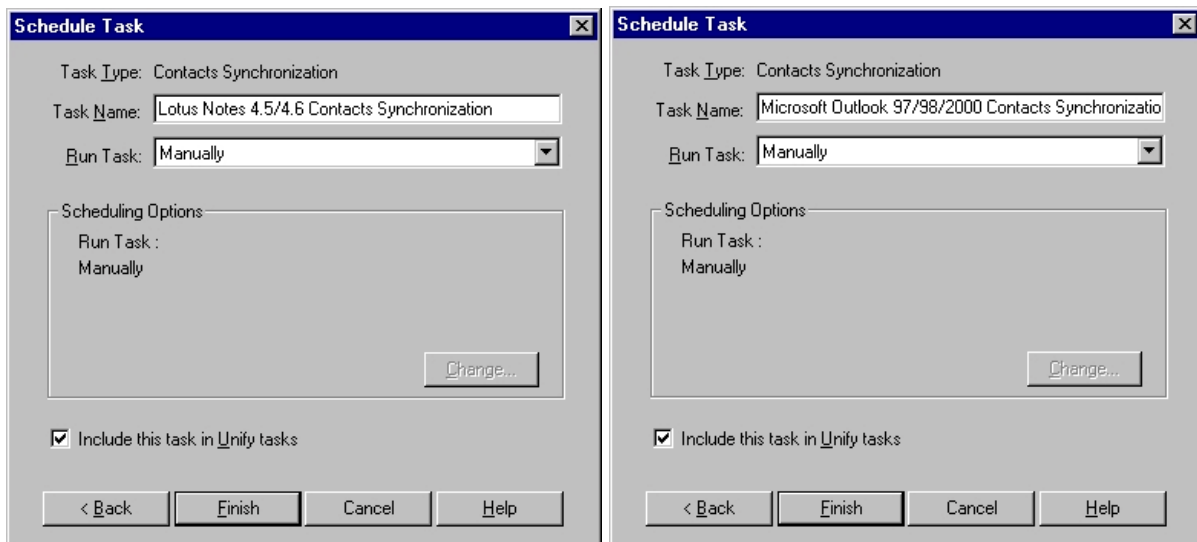
On the second sheet, you define what will happen if there is conflict between the PC and Nokia 9210 Communicator contact data. You can also select the direction of the synchronization.



The last sheet contains all the PC software specific settings. The layout of the sheet depends on which PC software you have selected. The figures below illustrate the Lotus Notes and the Microsoft Outlook sheets. Here you can specify the location of the contact database in the PC software, the profile settings and the password, if it is required.



When the settings are correct in all the sheets, press the **OK** button to return to the previous screen and press the **Next** button to continue.



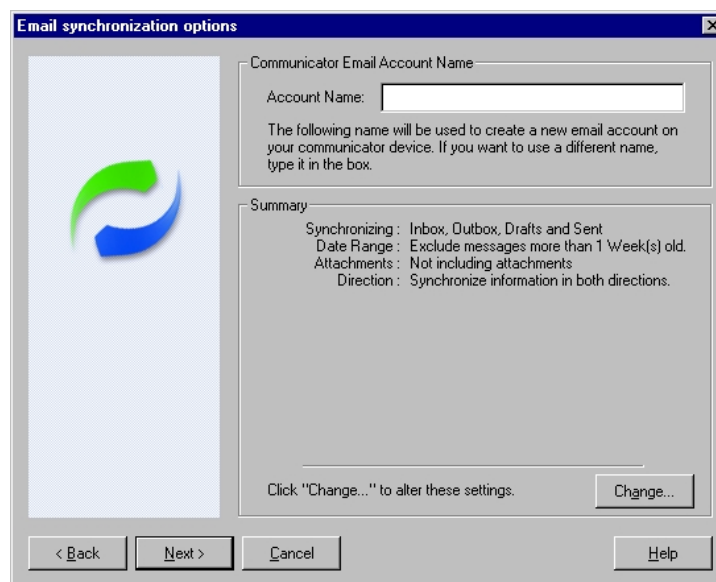
Now you can give a name to the task you just have created. Also, you can define how you want to run this task. The options for it are **Manually** (when you like), **On connection** (every time you connect your Nokia 9210 Communicator to your PC) or **At scheduled time** (e.g. every Monday at 9:15 if the Nokia 9210 Communicator is connected to your PC).

Press the **Finish** button when everything is ready.

2.3 E-MAIL

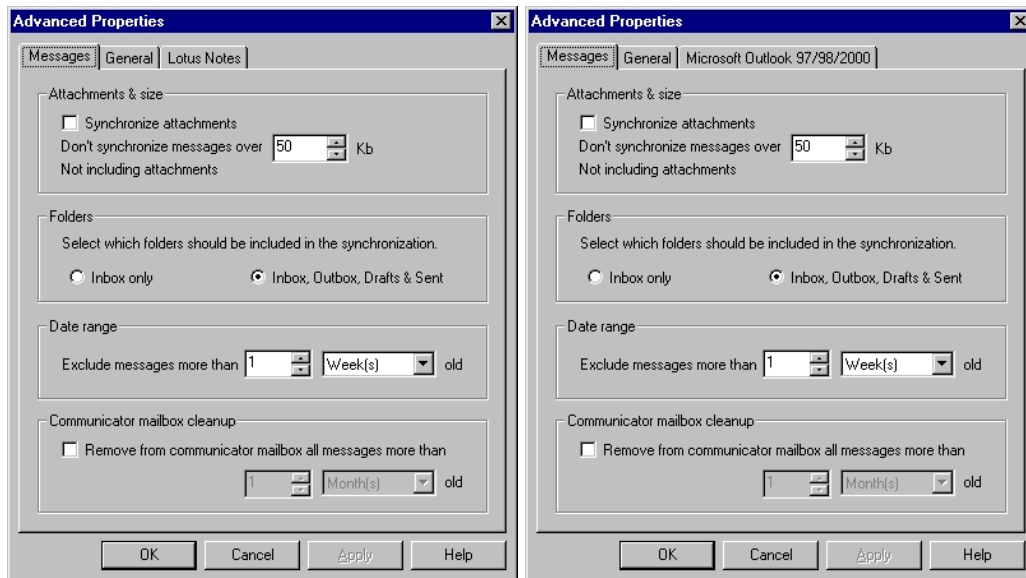
After PC software selection, the PC Suite for the Nokia 9210 Communicator analyses the PC software you have selected. This takes few seconds. The following window will then appear.

In the summary field you can see all the default details for this task. You can modify these settings by pressing the **Change** button or accept them by pressing the **Next** button.

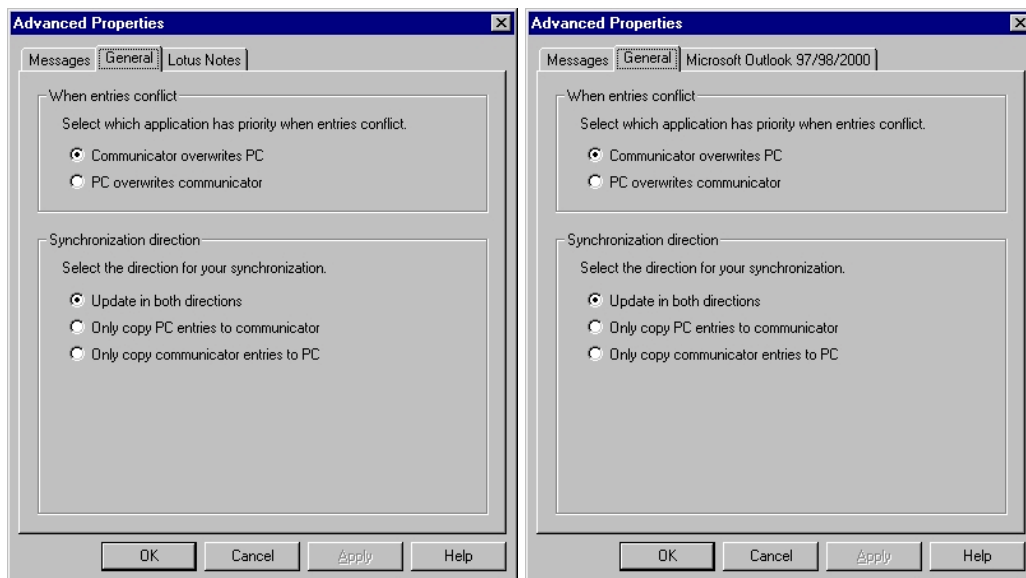


When you are modifying these settings you will see the following screens.

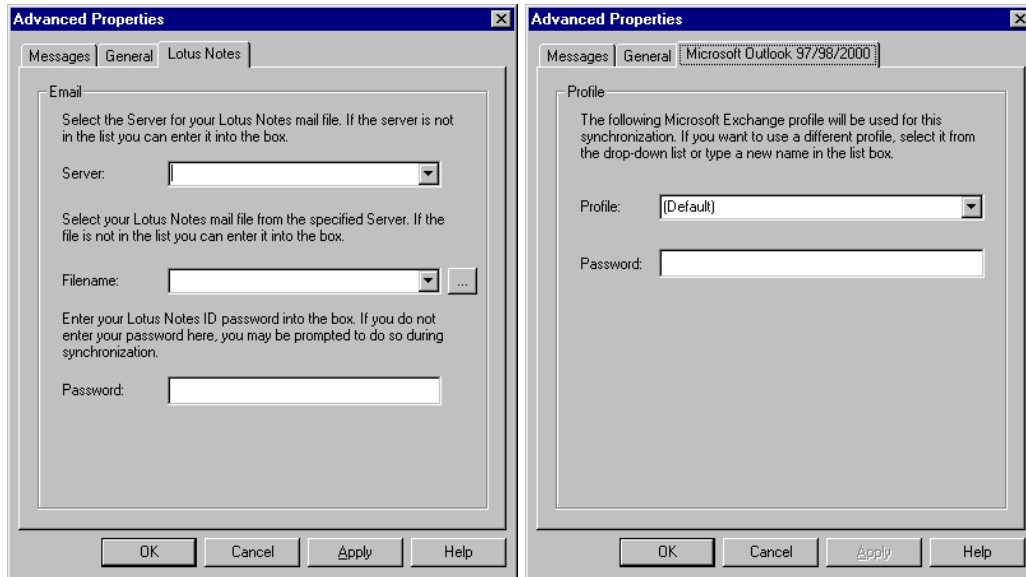
On the first sheet, you can define all the settings for synchronizing your e-mail.



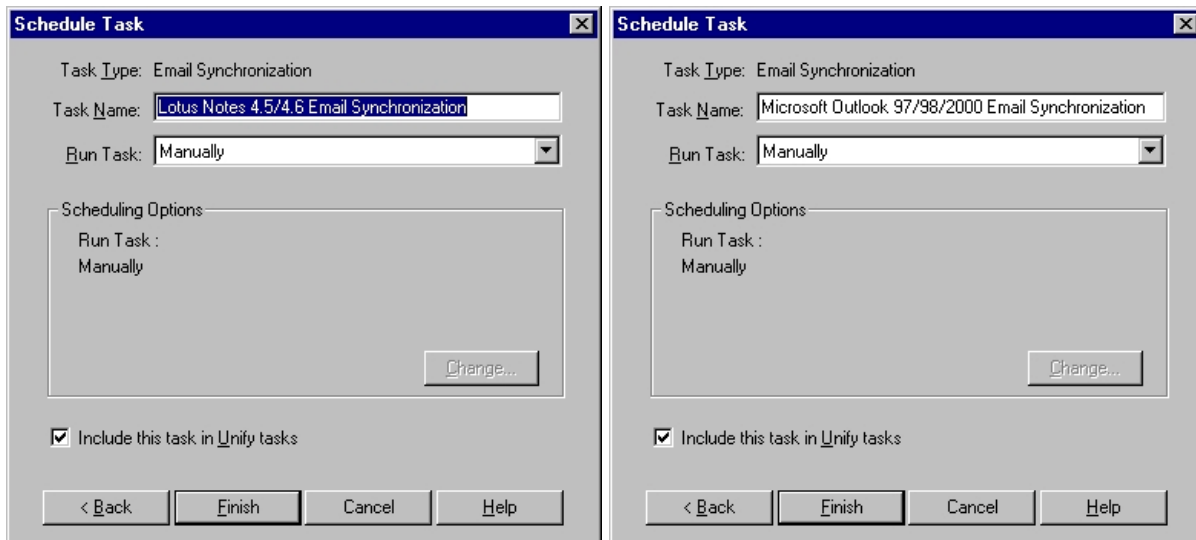
On the second sheet, you can define what will happen if there is conflict between the PC and Nokia 9210 Communicator contact data. You can also select the direction of the synchronization.



The last sheet contains all the PC software specific settings. The layout of the sheet depends on which PC software you have selected. The figures below illustrate the Lotus Notes and the Microsoft Outlook sheets. Here you can specify the location of the contact database in the PC software, the profile settings and the password, if it is required.



When the settings are correct on all sheets, press the **OK** button to return to the previous screen and press the **Next** button to continue.

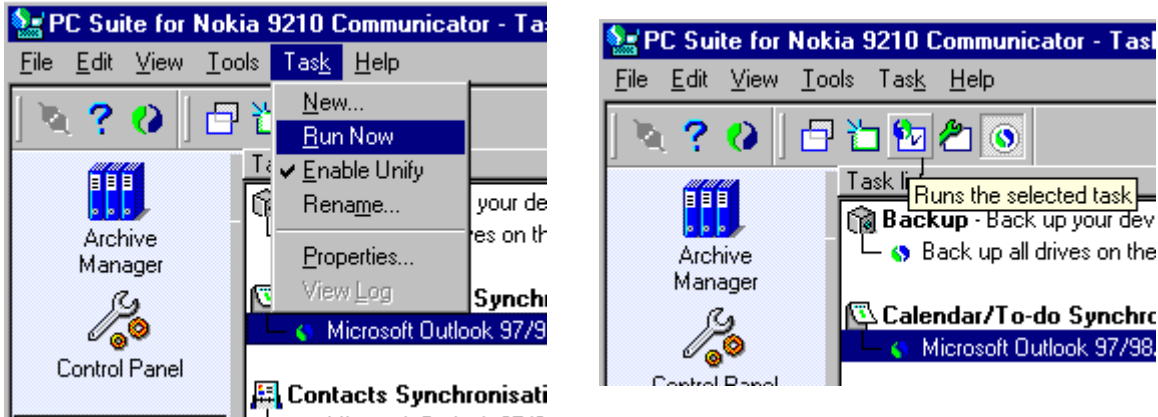


Now you can give a name to the task you just have created. Also, you can define how you want to run this task. The options for it are **Manually** (when you like), **On connection** (every time you connect your Nokia 9210 Communicator to your PC) or **At scheduled time** (e.g. every Monday at 9:15 if the Nokia 9210 Communicator is connected to your PC).

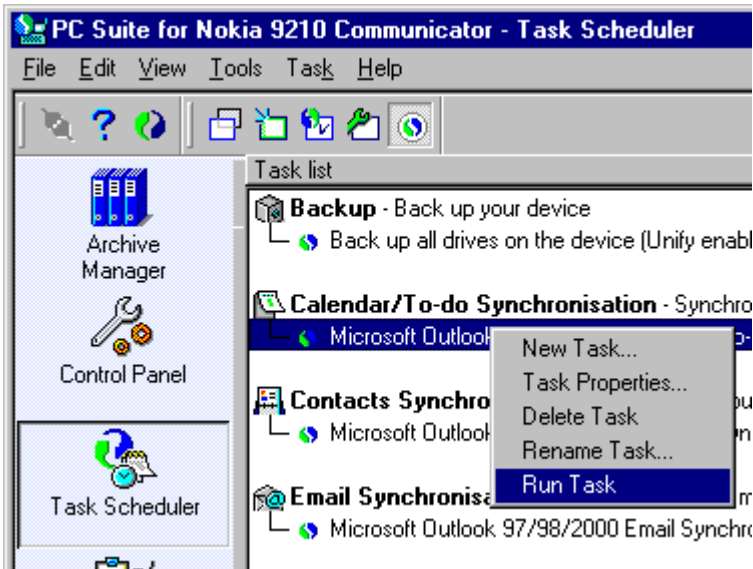
Press the **Finish** button when everything is ready.

3. RUN TASK

When you want to run a task, first connect your Nokia 9210 Communicator to your PC. Next, select the task you want to run and from the **Task** menu select **Run Now** or press the **Run the selected task** button



You can also click the right mouse button when mouse cursor is over the task and select **Run Task**.



The synchronization task will now begin.