



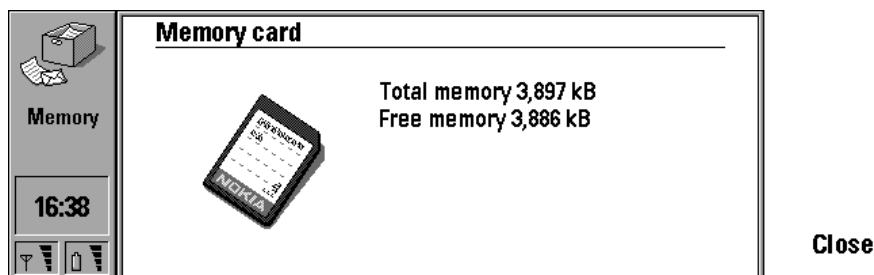
## Quick Guide For Using The Memory Card

### MEMORY CARD START GUIDE

The extra memory provided by the Nokia accessory Memory Card DTS-4 can be used in many ways.

#### HOW MUCH EXTRA MEMORY DO I HAVE ?

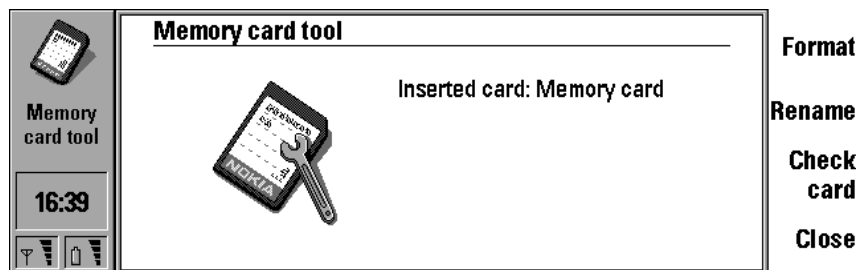
Select **Memory** in **System** application, and press **Memory card**. The card file structure uses a small amount of free memory.



#### HOW CAN I GIVE THE CARD A NEW NAME, AND CHECK CARD IS OK ?

Select **Memory card tool** in **System** application and press **Rename** or **Check card**.

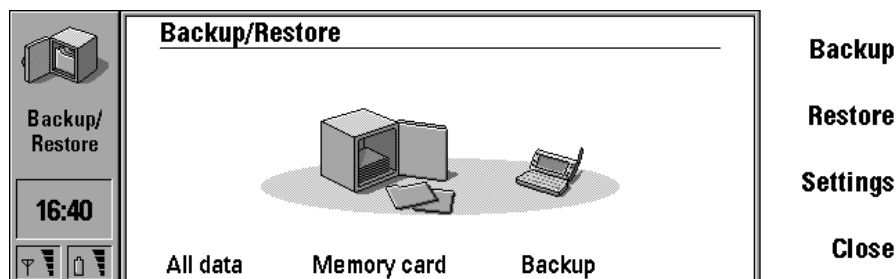
Note : formatting will destroy all data



## HOW DO I BACKUP 9110 DATA TO THE MEMORY CARD ?

Select **Backup/Restore** in **System** application and change **Connection type** in **Settings** to be Memory card. Proceed with a **Backup** as normal.

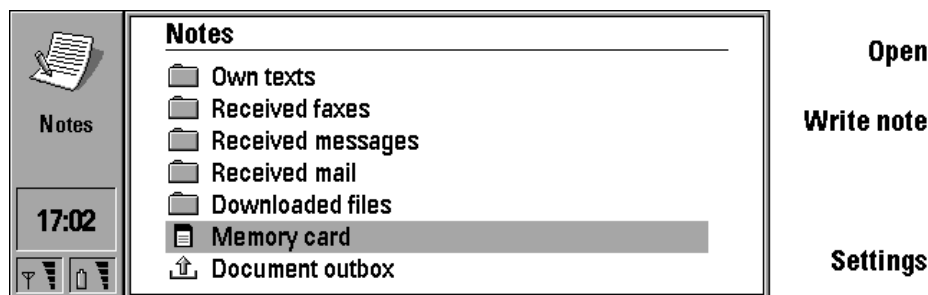
Note : memory card data is neither password protected nor encrypted



To backup memory card data, use PC Suite **Backup/Restore** with **Memory card data** checked.

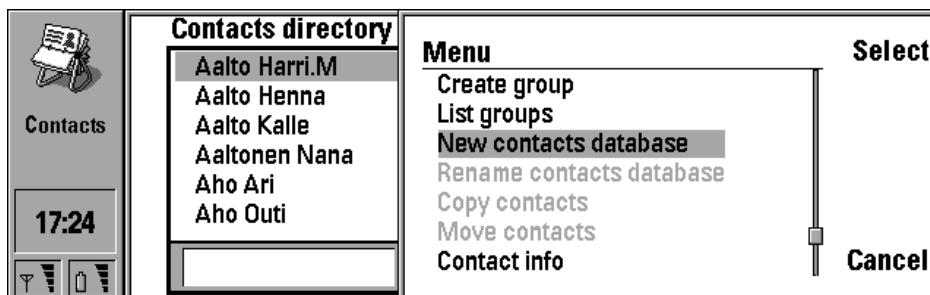
## HOW CAN I VIEW FILES ON MY MEMORY CARD ?

Memory card is an extra folder in **Notes** application - **Open** to view files then if desired **Create folder** using **Menu**. Copy or move files (eg: faxes, images) from 9110 folders to the card using the **Menu**.



## HOW DO I CREATE A CONTACTS DATABASE ON MY MEMORY CARD ?

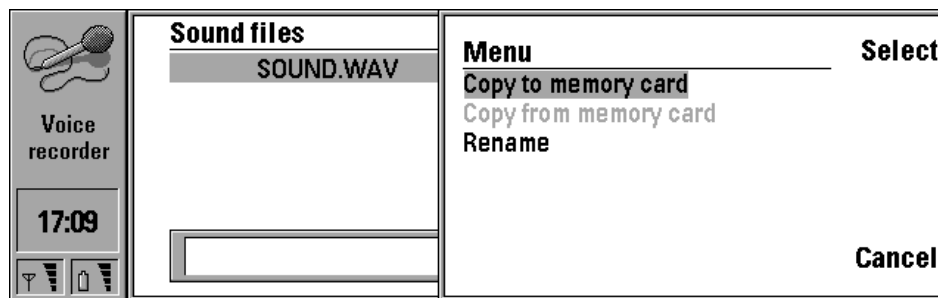
In **Contacts** application select **New contacts database** from the **Menu**. Then copy or move contacts to the new database from the commands provided on the **Menu**.



## HOW DO I PLAY A WAV SOUND FILE FROM MY MEMORY CARD ?

Open **Voice recorder** in 9110 found in **Extras**, highlight the WAV file, and press **Menu** to select **Copy to memory card** - give the file a new name. **Open** the file and press **Play**.

Note : if you copy sound file with same name, then you must delete the original to view the new memory card file



## HOW DO I INSTALL SOFTWARE ON THE MEMORY CARD ?

Select Install Location to be Memory card in PC Suite Install/Remove application, then install as usual. If using Nokia Server Software select **Connection type** to be Memory card in the **Install/Remove** settings in 9110 **System** application. Memory card software will be marked in the 9110 with an icon.

### Legal Notice

The contents of this document are copyright © 1995 – 1999 Nokia. All rights reserved.

Reproduction, transfer, distribution or storage of part or all of the contents in any form without the prior written permission of Nokia is prohibited.

Nokia is a registered trademark of Nokia Corporation. Nokia's product names are either trademarks or registered trademarks of Nokia. Other product and company names mentioned herein may be trademarks of their respective owners.

The contents of this document is provided "as is". Except as required by the applicable law, no warranty of any kind, either express or implied, is made in relation to the accuracy, reliability or content of the document. Nokia reserves the right to revise the document or withdraw it at any time without prior notice.

Nokia is not responsible for any lost of data, income or any consequential damage howsoever caused.