



## Nokia 9110 Communicator as a FaxModem over IR Connection Microsoft Windows 95

The communicator may be connected to a computer via an infrared or cable connection. The connection type is selected in the communicator's FaxModem mode settings (the Fax modem application is found in the System main view).

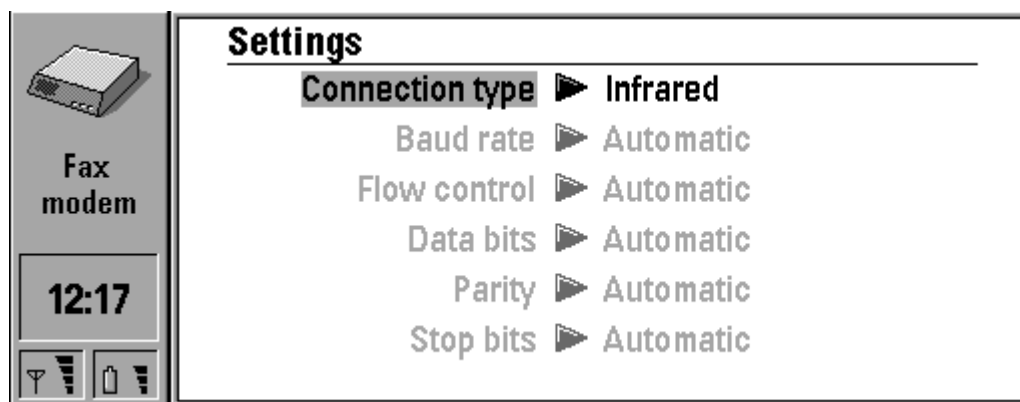
If you wish to use an infrared connection, your computer must have an IrDA compatible infrared port and the IrDA drivers must have been installed and activated (for more information on IrDA drivers and their use in Windows 95 contact Microsoft at [www.microsoft.com](http://www.microsoft.com)).

If the IrDA drivers are activated on your computer, the computer should automatically detect the presence of the communicator when you have put the IR ports of laptop and 9110 to face each other and pressed "activate" in the Communicator's fax-modem mode. This is indicated by an icon. When the dial-up networking (or some other communications application) is started the IR communications will be indicated by another icon.

When using the communicator as a fax modem via an infrared connection, it is recommended to use the communicator with cover closed to speed up the infrared link.

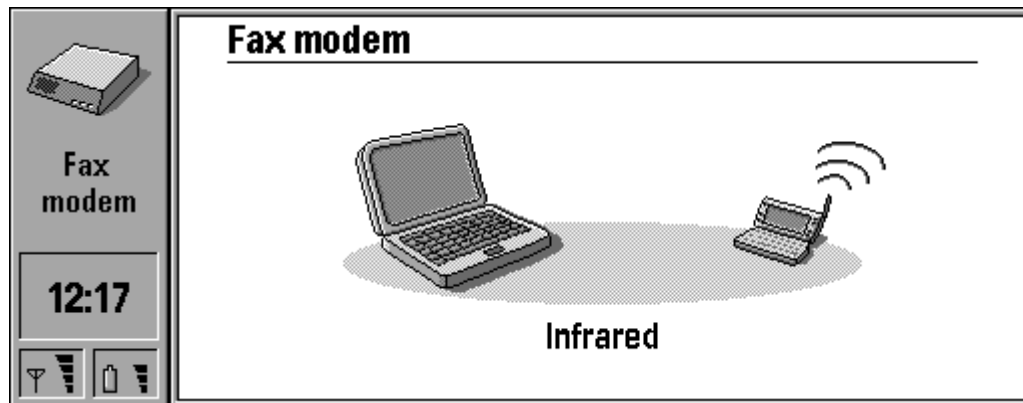
### Fax modem installation using infrared connection:

- 1) Start Windows 95 and switch on the communicator's phone interface.
- 2) Insert the Configuration disk into the disk drive of your computer.  
This floppy disk contains the modem information file. Alternatively the .inf file is available at the [www.nokia.forum.com](http://www.nokia.forum.com) communicator pages.
- 3) The infrared ports of the communicator and the computer should be facing each other (the distance should be between 5 to 100 cm).
- 4) Select Infrared as the connection type in the Fax modem settings.



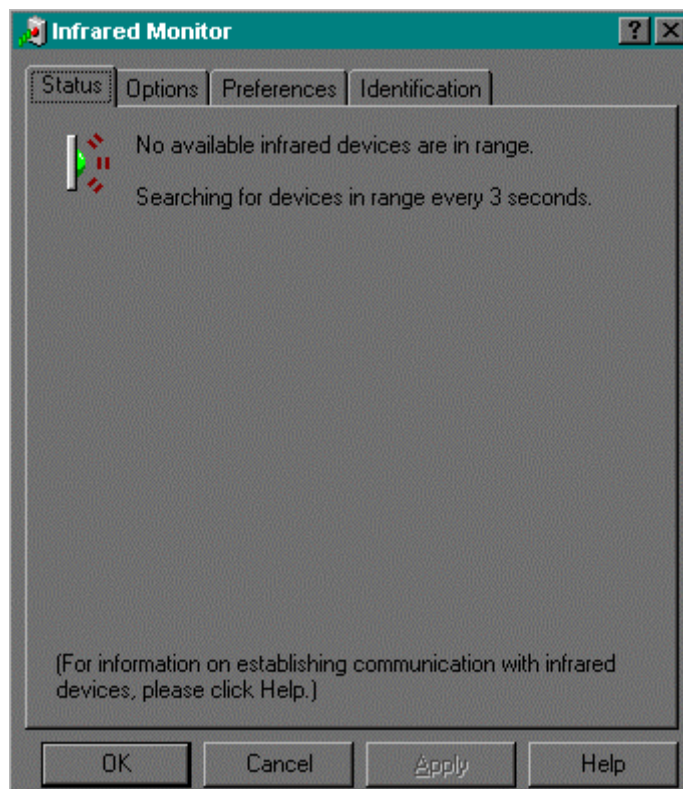
Picture 1

5) Press Activate in the Fax modem main view.



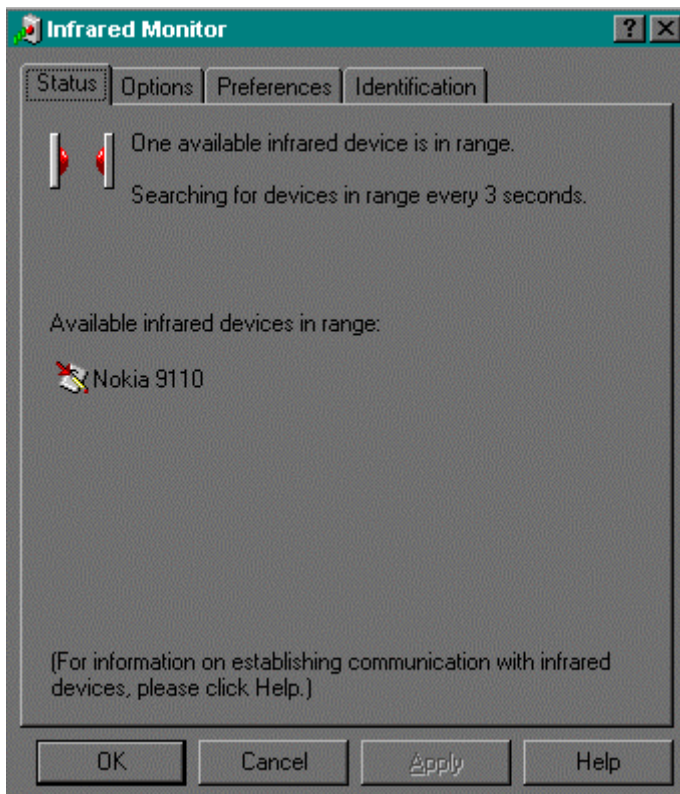
Picture 2

6) Check from the Infrared Monitor of Windows 95 that Windows 95 is searching for other devices in range and Plug and Play is enabled.



Picture 3

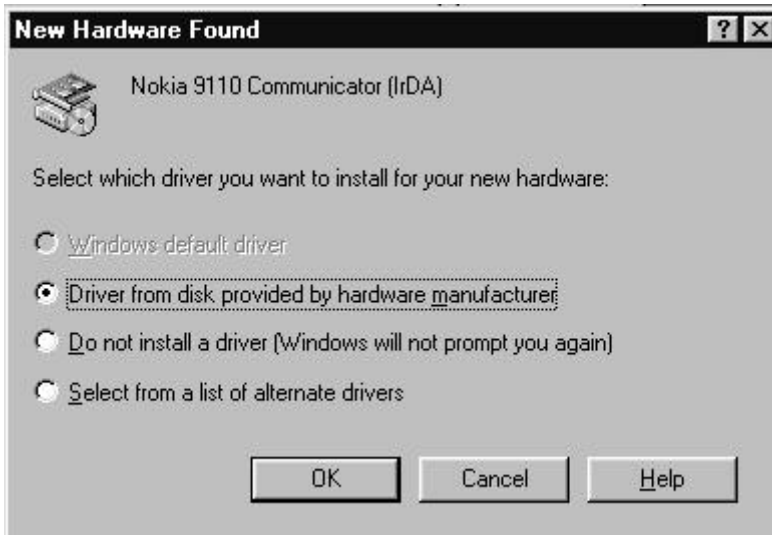
7) If your Windows 95 operating system does not at this stage display a dialog box you can start using the communicator as a fax modem. I.e you can start the communications application you intend to use, e.g. Dialup networking.



Picture 4

8) If your Windows 95 displays a dialog box stating "New Hardware Found", choose "Driver From Disk Provided By Hardware Manufacturer" (default choice). Click OK or press Enter.

9) The dialog "Install From Disk" appears. Click OK or press Enter. Windows 95 configures your communicator.



Picture 5

10) Remove the Setup disk from the disk drive. You may now start using your communicator as a fax modem over IR with Windows 95. The computer you have configured can now automatically detect the communicator every time the communicator is used as a fax modem with the computer.

## Legal Notice

The contents of this document are copyright © 1995 – 1998 Nokia. All rights reserved. Reproduction, transfer, distribution or storage of part or all of the contents in any form without the prior written permission of Nokia is prohibited.

Nokia is a registered trademark of Nokia Corporation. Nokia's product names are either trademarks or registered trademarks of Nokia. Other product and company names mentioned herein may be trademarks of their respective owners.

The contents of this document is provided "as is". Except as required by the applicable law, no warranty of any kind, either express or implied, is made in relation to the accuracy, reliability or content of the document. Nokia reserves the right to revise the document or withdraw it at any time without prior notice.

Nokia is not responsible for any lost of data, income or any consequential damage howsoever caused.