

**SUPPORT GUIDE FOR  
NOKIA CONTENT COPIER**  
for the Nokia 7210

**NOKIA**

# Contents

1. INTRODUCTION.....	3
2. SYSTEM REQUIREMENTS.....	3
3. USING THE NOKIA CONTENT COPIER.....	4

**Copyright © Nokia. All rights reserved.**

Reproduction, transfer, distribution or storage of part or all of the contents in this document in any form without the prior written permission of Nokia is prohibited.

Nokia and Nokia Connecting People are registered trademarks of Nokia Corporation. Other product and company names mentioned herein may be trademarks or tradenames of their respective owners.

Nokia operates a policy of continuous development. Nokia reserves the right to make changes and improvements to any of the products described in this document without prior notice.

Under no circumstances shall Nokia be responsible for any loss of data or income or any special, incidental, consequential or indirect damages howsoever caused.

The contents of this document are provided "as is". Except as required by applicable law, no warranties of any kind, either express or implied, including, but not limited to, the implied warranties of merchantability and fitness for a particular purpose, are made in relation to the accuracy, reliability or contents of this document. Nokia reserves the right to revise this document or withdraw it at any time without prior notice.

The availability of particular products may vary by region. Please check with the Nokia dealer nearest to you.

## 1. INTRODUCTION

---

This guide briefly describes how to begin using Nokia Content Copier. For more detailed information on the use of the Nokia Content Copier, please refer to Online Help in the Nokia Content Copier application.

The Nokia Content Copier consists of the following features:

- Enables the copying of data between two Nokia phones (described later in this document)
  - Phone book (names and numbers), Caller Groups
  - Profiles
  - Ease of use items (I e Any key answer)
  - Calendar
  - WAP settings, Messages, Advanced Functions etc. depending on the phone model used
- Sends back-up data on your Nokia phone to a PC, and then restores it to your phone
  - Phone book (names and numbers), Caller Groups
  - Profiles
  - Ease of use items (I e Any key answer)
  - Calendar
  - WAP settings, Messages, Advanced Functions etc. depending on the phone model used
- Erases data from your phone (only from the Nokia 7210)

## 2. SYSTEM REQUIREMENTS

---

To install and run the Nokia Content Copier, you need:

To use the Nokia PC Suite 5.0 you need:

- An Intel-compatible PIII 500 MHz with 128 Mb of RAM PC equipped with Windows 98/98 SE, Windows ME, Windows 2000, Windows XP
- At least 50 Mb of free disk space (150 Mb recommended)
- It is also assumed that you have installed the Nokia PC Suite 5.0

IrDA port supporting FIR protocol, USB port (requires Nokia DKU-5 USB-connection cable) or Serial Port (requires DLR-3P cable)

The Nokia Content Copier supports the following Nokia phones

Nokia 6250/Nokia 7110/Nokia 6340/Nokia 6360	Infrared connection / the DLR-3P serial cable
Nokia 3360/Nokia 6510/Nokia 8210/Nokia 8290/Nokia 8310/Nokia 8390/Nokia 8850/Nokia 8890	Infrared connection
Nokia 6210/Nokia 6310/Nokia 6310i	Infrared connection / the DLR-3P serial cable / Bluetooth



**Note:** Because the Nokia Connection Manager that comes with Nokia PC Suite 5.0 does not support DAU-9P cable anymore following Nokia phones are not supported by the Nokia Content Copier: Nokia 5110/Nokia 5130/Nokia 6110/Nokia 6130/Nokia 6150



**Note:** In this guide, all references to personal computers (PC) are also applicable to laptop computers.

### 3. USING THE NOKIA CONTENT COPIER

1. Exit all Windows programs that could reserve the COM: or IrDA port
2. Start the Nokia Content Copier
3. Follow the instructions on the screen, and note the following:
  - Data can only be transferred *from* the Nokia phone models listed earlier in this document, and the *target* phone can only be the Nokia 7210. This applies to all actions in the Nokia Content Copier.
  - Also note that screens that are shown below may be different from the screens you see depending on the phone model used for copying data from.

The process of copying data from PC to Nokia 7210 is briefly illustrated below:



Figure 1. Select Action “Copy data from a PC to a phone”.

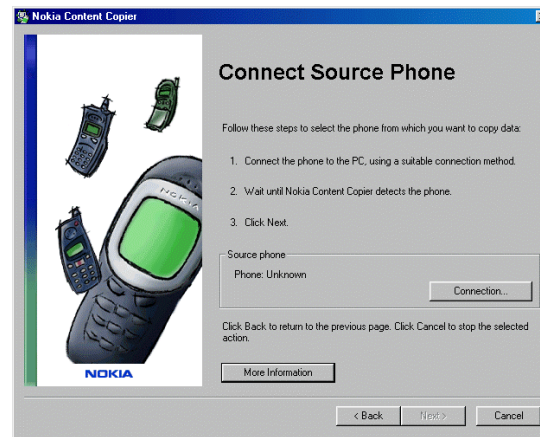


Figure 2. If Source phone is “Unkown” click “Connection” button and the Nokia Connection Manager will open (figure 4.). By clicking on “More Information” button you will get more information about using the Nokia Content Copier (figure 3.).

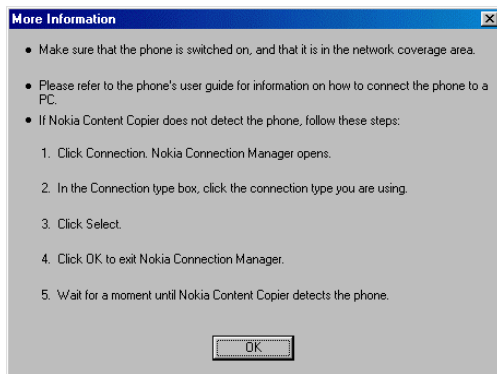


Figure 3.



Figure 4. By clicking the *Connection* button in the Nokia Content Copier will open the Nokia Connection Manager. Select the connection type and phone

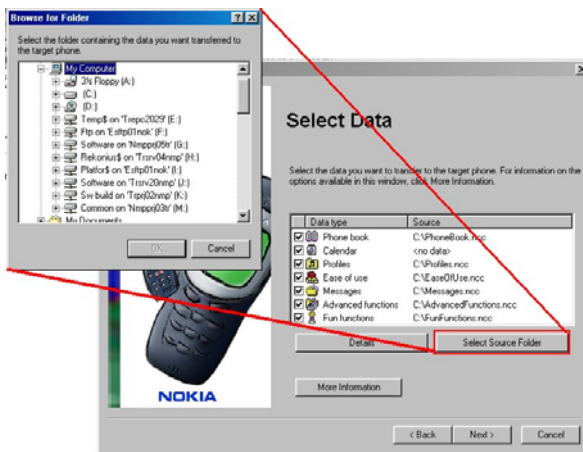


Figure 5. Click "Select Source Folder" button and browse for the location of the backup data and click "OK". Now Nokia Content Copier will open all the files that it can find from that location and shows the path and the file name on the Source row.

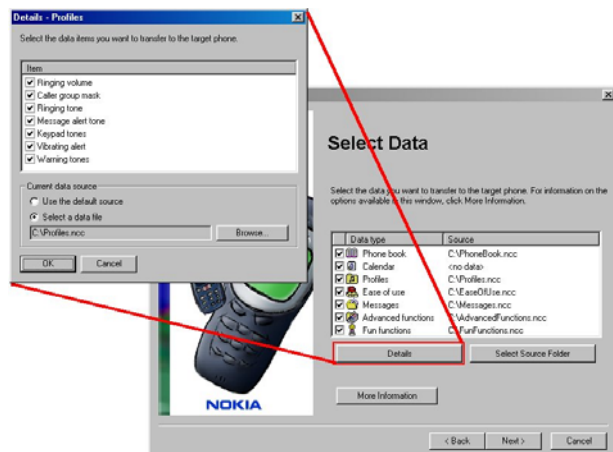


Figure 6. In the Details screen you can select the data items to be transferred to your phone, and if you wish, you can use some old data on your hard disk (must be in compatible .ncc format).



Figure 7. Nokia Content Copier transfers data to your phone.



Figure 8. After all the data is successfully transferred to your phone you can view/save the log, start a new action or Finish (If you click the Finish button the Nokia Content Copier will exit)