



# **SUPPORT GUIDE FOR NOKIA 7210 WITH OUTLOOK 98/2000**





# Contents

- 1. INTRODUCTION ..... 1
- 2. INSTALLING AND SETTING UP ..... 1

**Copyright © Nokia. All rights reserved.**

Reproduction, transfer, distribution or storage of part or all of the contents in this document in any form without the prior written permission of Nokia is prohibited.

Nokia and Nokia Connecting People are registered trademarks of Nokia Corporation. Other product and company names mentioned herein may be trademarks or tradenames of their respective owners.

Nokia operates a policy of continuous development. Nokia reserves the right to make changes and improvements to any of the products described in this document without prior notice.

Under no circumstances shall Nokia be responsible for any loss of data or income or any special, incidental, consequential or indirect damages howsoever caused.

The contents of this document are provided "as is". Except as required by applicable law, no warranties of any kind, either express or implied, including, but not limited to, the implied warranties of merchantability and fitness for a particular purpose, are made in relation to the accuracy, reliability or contents of this document. Nokia reserves the right to revise this document or withdraw it at any time without prior notice

The availability of particular products may vary by region. Please check with the Nokia dealer nearest to you.

## 1. INTRODUCTION

---

How to configure Microsoft Outlook 98 / 2000 to function with Nokia 7210 phone as a modem with it

- Windows 98 / Me / 2000 / XP Operating System and IrDA port supporting data connections with Nokia 7210 and Nokia 7210 phone are the basic requirements
- Data services (at least outgoing data) should be activated in order to be able to make data calls
- Good GSM coverage and a well-charged battery as the data connection's power consumption is usually quite high.
- When you wish to use GPRS connection please verify from your operator that GPRS is activated on your SIM card and your SIM card supports GPRS
- When you are roaming in other GSM operator's network please verify that they have also GPRS roaming agreement

## 2. INSTALLING AND SETTING UP

---

Check that you have made a Dial-Up Networking connection for use with your Nokia phone (My Computer – Dial-up Networking)

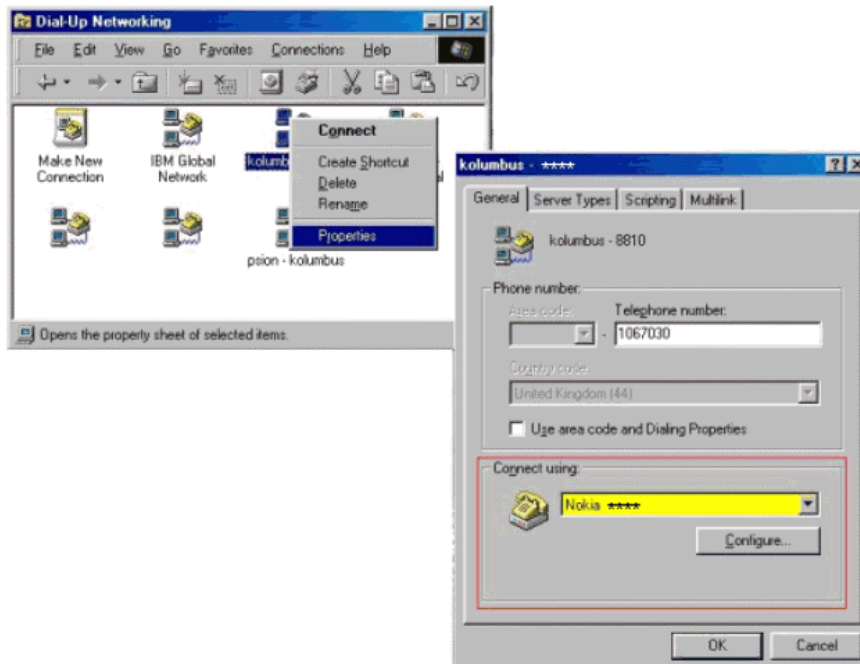


Figure 1. Checking your Internet connection's properties.

1. Now that the Internet connection's properties are correctly set, you are ready to go on-line.
2. You now need to add a new service for use with your Dial-Up connection in Outlook 98/2000.
3. Start the Outlook 98/2000.
4. Go to **Tools – Services...** and click **Add...** to add a new service. Choose **Internet E-mail** from the list and click **OK** (Figure 2).

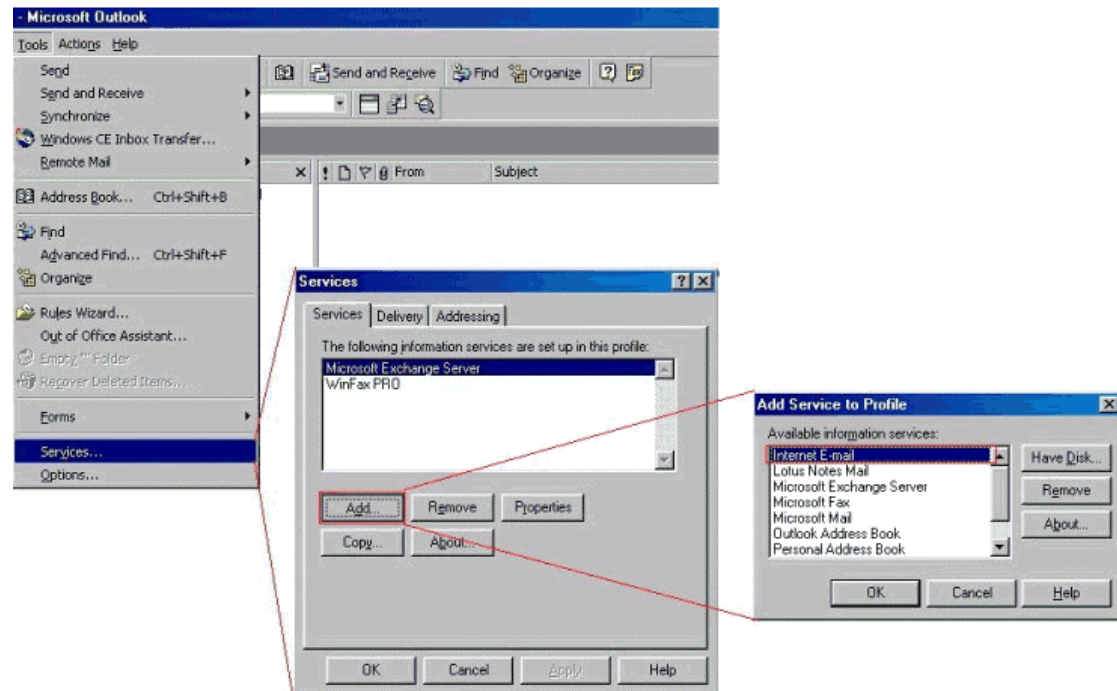


Figure 2. Adding a new service in Outlook 98/2000.

6. You must now fill in the Mail Account Properties (Figure 3).

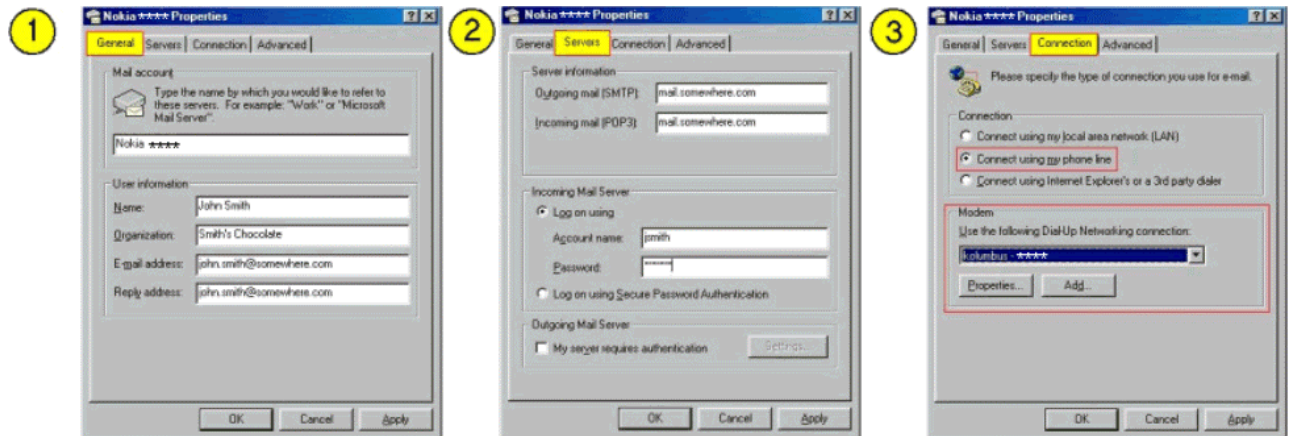


Figure 3. The three steps to setting up the E-mail account.

7. After you have filled in all the fields click **Apply** and **OK**. You should then get a message which asks you to Exit and Log Off from Outlook. Just click **OK** and choose **File - Exit and Log Off**.
8. Restart Outlook 98/2000. If you are prompted whether to **Connect / Work Offline / Help** you can choose either connect or Work Offline.
9. Go to **Tools – Remote mail – Connect...** Choose the information service you just created by clicking on the check box next to it and click **Next >**.
10. Choose either **Retrieve and send all new mail** or **Do only the following – Retrieve new message headers...** (Figure 4).

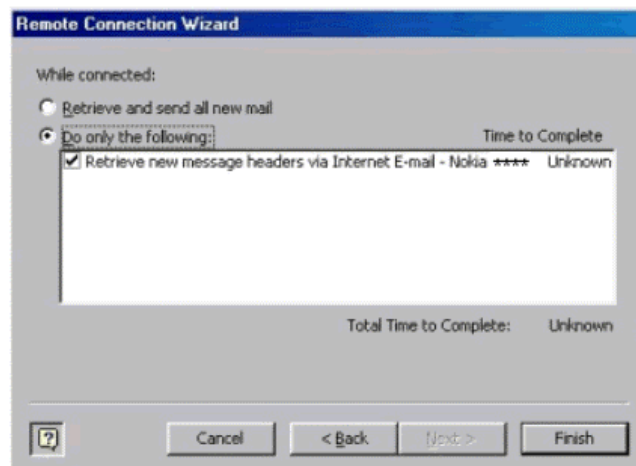


Figure 4. Remote Connection Wizard



**Note:** Choose **Retrieve and send...** if you have written messages offline and/or to get all the messages. Choose **Do only the following – Retrieve new...** in order to get only the message headers from which you can choose the messages you wish to read (this option is a lot faster because it only downloads the headers not the message itself).

11. Click **Finish** and after that you will be prompted to go on-line.
12. Check that your Nokia 7210 is connected to your PC in order to make the connection.
13. After a brief moment Outlook will retrieve new messages/headers.