

NOKIA 3650



SUPPORT GUIDE FOR MMS SETTINGS IN NOKIA 3650 IMAGING PHONE

NOKIA



Contents

- 1. INTRODUCTION 1
- 2. MMS SETTINGS ON PHONE 1
- 3. CONFIGURING MMS SETTINGS WITH PC SUITE 3

Legal Notice

Copyright © 2003 Nokia. All rights reserved.

Reproduction, transfer, distribution or storage of part or all of the contents in this document in any form without the prior written permission of Nokia is prohibited.

Nokia and Nokia Connecting People are registered trademarks of Nokia Corporation. Other product and company names mentioned herein may be trademarks or tradenames of their respective owners.

Nokia operates a policy of continuous development. Nokia reserves the right to make changes and improvements to any of the products described in this document without prior notice.

Under no circumstances shall Nokia be responsible for any loss of data or income or any special, incidental, consequential or indirect damages howsoever caused.

The contents of this document are provided "as is". Except as required by applicable law, no warranties of any kind, either express or implied, including, but not limited to, the implied warranties of merchantability and fitness for a particular purpose, are made in relation to the accuracy, reliability or contents of this document. Nokia reserves the right to revise this document or withdraw it at any time without prior notice.



1. INTRODUCTION

For reading and sending MMS messages via the Nokia 3650 phone, you need to have an Access Point (AP) configured to your Nokia 3650 phone. For further information on how to configure APs, please refer to the user's guide of the phone.

Also, your service provider may be able to send some or all of the required settings to you via a special short message called an Over The Air (OTA) message. After you have received and saved the settings, you can start using the MMS application or edit the settings as described below.



Note: To be able to use *High speed* (refers to HSCSD [High Speed Circuit Switched Data] or *GPRS* (*general packet radio service*), the network service provider has to support these features, and, if necessary, to activate them on your SIM card. When using High speed or GPRS, extra charges may apply. Check with your network service provider for further details and availability

2. MMS SETTINGS ON PHONE

1. Open the **Messaging** folder.
2. Press **Options** and select **Settings** from the list.
3. Highlight **Multimedia message** and press the joystick

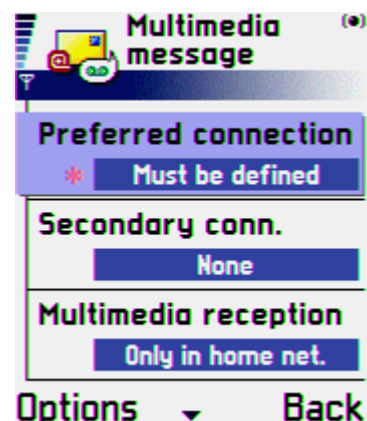
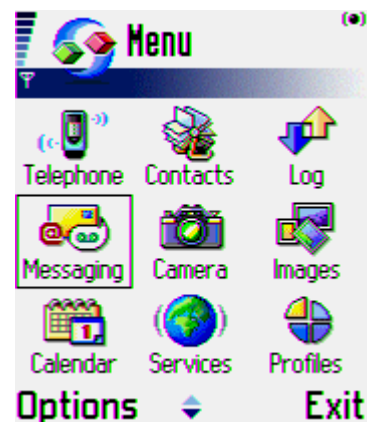


Note: All fields marked with * are mandatory fields and must be completed.

4. **Preferred connection:** Choose from the list containing all available APs. Note, that you must be able to connect to the MMS server via the given AP.

If there is no AP defined, you will get a pop-up asking if you want to define it now. For further Information how to configure APs, please refer to the user guide.

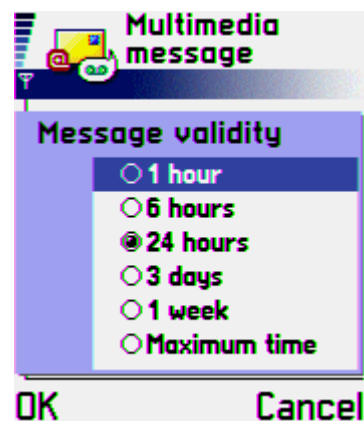
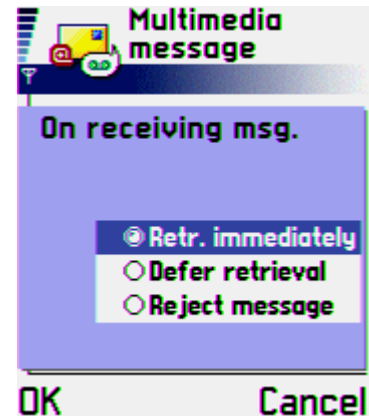
5. **Secondary connection:** Defines which access point is used as secondary access point with MMS.





Note: Preferred and secondary connection must have same homepage settings pointing to the same the MMS centre. Only the data connection can be different.

6. **Multimedia reception:** With this settings you can limit MMS message reception. Options are **Only in home network** (only when you are in your own GSM operator network area)/**Always on** /**Off**
7. **On receiving msg:** Here you can define how you are going to receive incoming MMS messages. Options are **Retr. Immediately** (without any confirmation when MMS is incoming) / **Defer retrieval** (message is fetched when you have changed back to **Retr. Immediately mode**) and **Reject message**.
8. **Allow anon. Messages:** Options are **Yes** and **No**. With this setting you can reject MMS messages coming from anonymous sender.
9. **Receive adverts:** Options are **Yes** and **No**. With this setting you can reject MMS messages containing advertisements and defined as such.
10. **Receive report :** Options are **Yes** and **No**. With this setting you can control whether delivery reports are received or not. When selecting **Yes** you will get notification when MMS is delivered to receiver's phone if receiver's phone allows receive report sending.
11. **Deny report sending:** Options are **Yes** and **No**. With this setting you can control whether delivery reports are sent or not.
12. **Message validity:** Here you can set how long your messages are stored in MMS server if recipient does not download it. This works in the same way as in short message settings. In some cases network operator or service provider limits usage of this settings.
13. **Image size:** Here you can define the size of image in MMS messages you send. The options are **Small** (maximum size of an image is 160*120 pixels, message with some text and picture takes approximately 10kb) and **Large** (maximum size of image is 640*480 pixels, message with some text and picture takes approximately 40kb)
14. **Speaker:** You can define here speaker voice source if the MMS message includes sound. The options are **Normal** (uses earpiece speaker) and **Loudspeaker** (uses hands free loudspeaker).

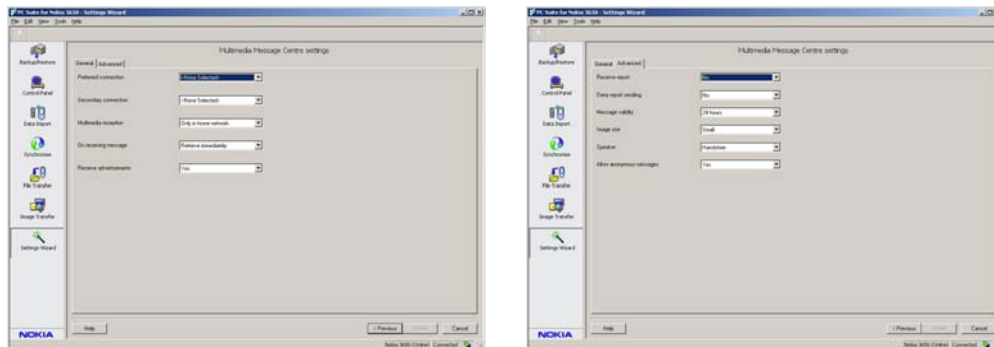
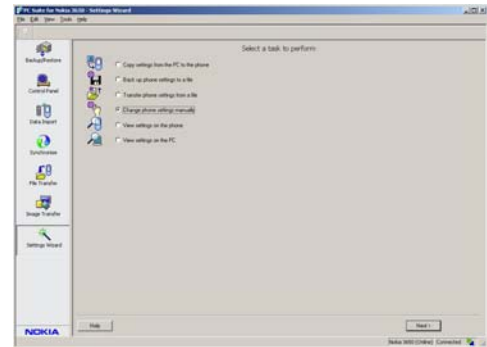


You have now set up an MMS account to your Nokia 3650 phone.

3. CONFIGURING MMS SETTINGS WITH PC SUITE

You can enter the same settings to your Nokia 3650 phone using the Settings Wizard in PC Suite for Nokia 3650 once you have installed it on a compatible PC. First you must have Remote connection configured on the Nokia 3650 phone.

1. Connect your Nokia 3650 phone to a compatible PC via Bluetooth technology or infrared (IrDA) connection and open PC Suite for Nokia 3650.
2. Select **Settings Wizard** from the toolbar on the left-hand side.
3. Press the **Next** button
4. Select **Change Phone Settings Manually** and press the **Next** button.
5. Select **MMS settings** and press the **Next** button.
6. If you already have MMS settings defined on your Nokia 3650 phone you get an option to copy existing MMS settings or create new ones from scratch.
7. Now you can enter the settings to the PC Suite.



8. When the account is ready, press the **Finish** button to send the account to your Nokia 3650 phone.

You have now set up an MMS account to your Nokia 3650 phone.