



SUPPORT GUIDE FOR THE NOKIA 6100 WITH AN INFRARED DATA CONNECTION IN A POCKET PC DEVICE





Contents

- 1. INTRODUCTION 1
- 2. SETTING UP A NEW CONNECTION 1
- 3. MAKING A DIAL-UP CONNECTION..... 3
- 4. HANGING UP THE CONNECTION 4

Copyright © Nokia. All rights reserved.

Reproduction, transfer, distribution or storage of part or all of the contents in this document in any form without the prior written permission of Nokia is prohibited.

Nokia and Nokia Connecting People are registered trademarks of Nokia Corporation. Other product and company names mentioned herein may be trademarks or tradenames of their respective owners.

Nokia operates a policy of continuous development. Nokia reserves the right to make changes and improvements to any of the products described in this document without prior notice.

Under no circumstances shall Nokia be responsible for any loss of data or income or any special, incidental, consequential or indirect damages howsoever caused.

The contents of this document are provided "as is". Except as required by applicable law, no warranties of any kind, either express or implied, including, but not limited to, the implied warranties of merchantability and fitness for a particular purpose, are made in relation to the accuracy, reliability or contents of this document. Nokia reserves the right to revise this document or withdraw it at any time without prior notice

The availability of particular products may vary by region. Please check with the Nokia dealer nearest to you.

1. INTRODUCTION

How to configure Pocket PC device to function with Nokia 6100 phone as a modem with it

- Pocket PC device and Nokia 6100 phone are the basic requirements
- Data services (at least outgoing data) should be activated in order to be able to make data calls
- Good GSM coverage and a well-charged battery in both devices as the data connection's power consumption is usually quite high.
- When you wish to use GPRS connection please verify from your operator that GPRS is activated on your SIM card and your SIM card supports GPRS
- When you are roaming in other GSM operator's network please verify that they have also GPRS roaming agreement

2. SETTING UP A NEW CONNECTION

1. Go to the Start menu and select Settings
2. Select Modem
3. You should now have a list of available connections; just click on the New Connection... option.
4. Complete the settings as shown in the figures below:

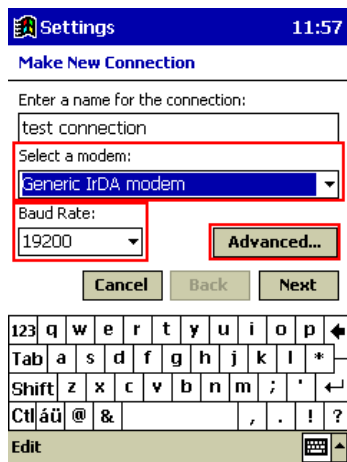


Figure 1. Select a modem and check the Baud Rate (When using HSCSD it is recommended to use 115200). After that tap Advanced...

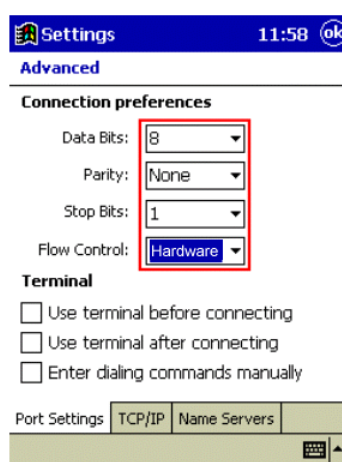


Figure 2. Check Connection preferences. Especially that the Flow Control selected is HW. Tap OK on upper right corner and then tap Next

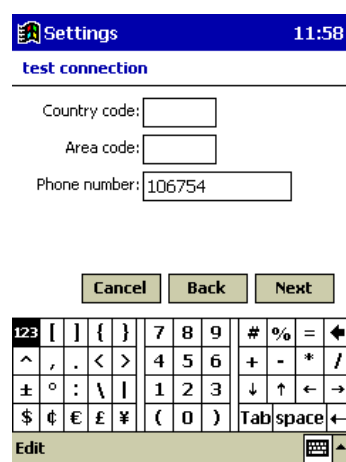


Figure 3. Type in the ISP's phone number (typically in GPRS Connection the ph. number is *99#, please check from your GSM operator) and then tap Next.

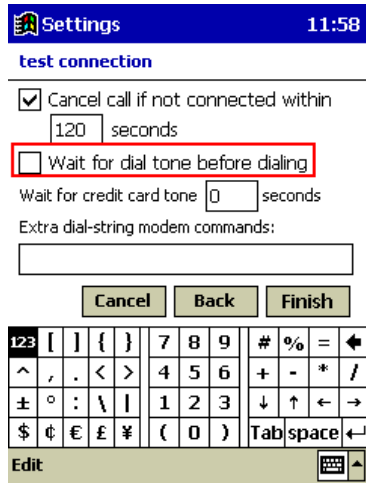


Figure 4. Uncheck the Wait for Dial tone before dialling check box and tap Finish.



Figure 5. Now go to Dialling leaflet and go to Dialling Patterns...

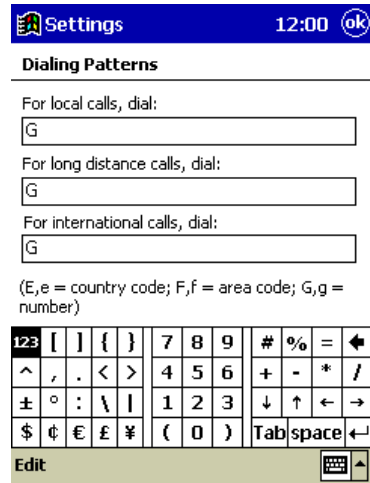


Figure 6. In some cases you may need to edit these to get the phone number right when dialling.



Tip: If you wish to make a HSCSD connection then type the following dial-string in to the Extra dial-string... box:

Extra dial-string modem commands:

+cbst=16,0,1;+chsn=4,3,0,4 (to get 28.8 Kbps modem connection)

+cbst=81,0,1;+chsn=6,3,0,8 (to get 38.4 Kbps ISDN v.110 connection)

+cbst=50,0,1;+chsn=6,3,0,8 (to get 43.2 Kbps ISDN v.120 connection)

* If you wish to make a GPRS connection then put Access point name either to your phone or put the following AT command to Extra dial-string...box:

+cgdcont=,,"xxx" (NOTE! xxx refers to Access Point Name which you will get from your GSM operator)

3. MAKING A DIAL-UP CONNECTION

1. Go to the Start menu and select Programs
2. Select Connections
3. You should now have the icons of the available connections; click on the connection you have just created (Figure 7).
4. Fill in your User name and Password and tap Connect (Figure 8)
5. Figures 9 and 10 shows the Status screens of the connection

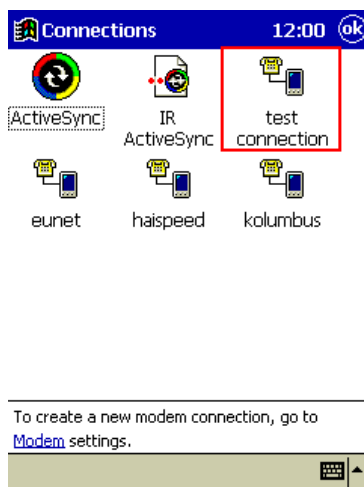


Figure 7.

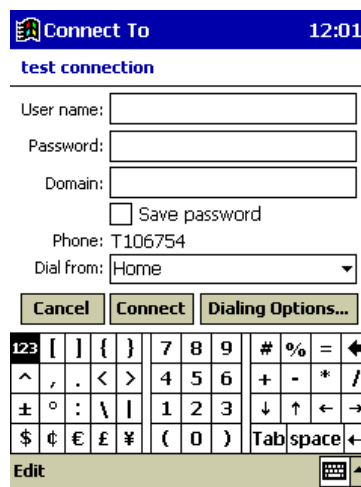


Figure 8.

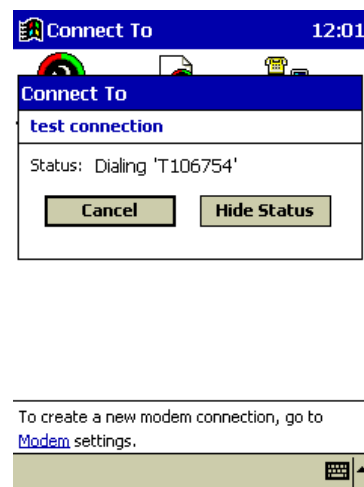


Figure 9.

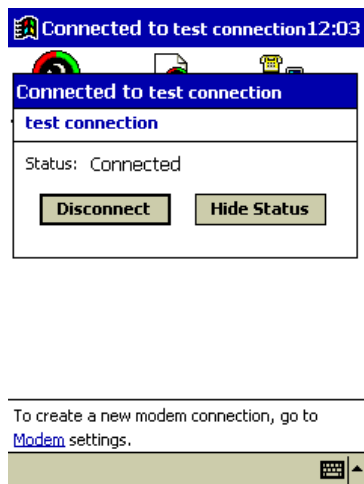


Figure 10.

6. You should now be connected to your ISP, so just start your Internet Explorer or Inbox.

4. HANGING UP THE CONNECTION

1. Go to the Start menu and select Today
2. Tap the connection icon in the lower right corner and
3. Select Disconnect (Figure 10).

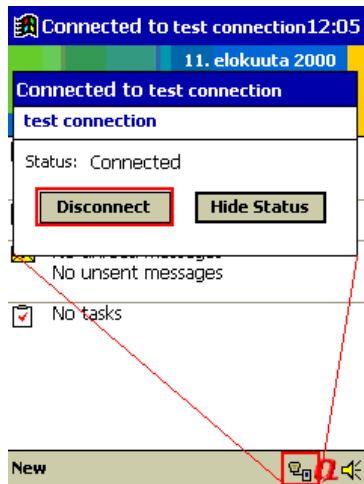


Figure 10.