



SUPPORT GUIDE FOR THE BLUETOOTH DEVICES USING THE DIGIANSWER DRIVERS

NOKIA

Copyright © Nokia. All rights reserved | Date: 27.01.03, ver. 1.0





Contents

1. INTRODUCTION AND BASIC REQUIREMENTS	3
2. ESTABLISHING BLUETOOTH CONNECTION	3
3. USING THE BLUETOOTH CONNECTION	5
4. TROUBLESHOOTING	5

Copyright © Nokia. All rights reserved.

Reproduction, transfer, distribution or storage of part or all of the contents in this document in any form without the prior written permission of Nokia is prohibited.

Nokia and Nokia Connecting People are registered trademarks of Nokia Corporation. Other product and company names mentioned herein may be trademarks or tradenames of their respective owners.

Nokia operates a policy of continuous development. Nokia reserves the right to make changes and improvements to any of the products described in this document without prior notice.

Under no circumstances shall Nokia be responsible for any loss of data or income or any special, incidental, consequential or indirect damages howsoever caused.

The contents of this document are provided "as is". Except as required by applicable law, no warranties of any kind, either express or implied, including, but not limited to, the implied warranties of merchantability and fitness for a particular purpose, are made in relation to the accuracy, reliability or contents of this document. Nokia reserves the right to revise this document or withdraw it at any time without prior notice

The availability of particular products may vary by region. Please check with the Nokia dealer nearest to you.



1. INTRODUCTION AND BASIC REQUIREMENTS



Note: The information in this document is furnished for information only, is subject to change without notice, may contain errors or inaccuracies, and represents no commitment whatsoever.

The basic requirements that needs to be met before proceeding:

- Laptop with Nokia DTL-4 or Socket Bluetooth Card and Bluetooth software suite should be installed on the computer before continuing
- a Nokia 6310i phone and Nokia PC Suite 4.88 and/or Nokia Modem Options are the basic requirements for using the Bluetooth connection

Verified Windows operating system versions:

- Windows 98SE/ME/2000 Pro/XP Pro

Please check the nokia.com Nokia 6310i support section for other supported Bluetooth devices and Support guides for them.

2. ESTABLISHING BLUETOOTH CONNECTION

First set up your Nokia phone for Bluetooth use according to User Manual. For example in Nokia 6310i

1. Browse to Menu – Connectivity / Bluetooth
2. Bluetooth – Bluetooth settings - My phone's visibility –menu and check that it is set to "Shown to all" and
3. Then name your phone (Bluetooth – Bluetooth settings - My phone's name –menu)
4. After naming your Nokia 6310i turn the Bluetooth on (Bluetooth menu's first menu item).



Figure 1. Bluetooth radio ON symbol on the phone display



Note: If this is the first time you are establishing a Bluetooth connection between your phone and your computer you need to go thru the steps shown below. However if you already have once gone thru these steps with your phone then you can skip to chapter 2.1.

Now set up your laptop for Bluetooth connection using Bluetooth Neighborhood.

1. Insert DTL-4 or Socket Bluetooth Card in to your laptop
2. Click on the Viking on your desktop (Figure 2.)



Figure 2. Bluetooth Neighborhood icon

3. Register Bluetooth devices by pressing F5
4. Double click on your phone icon and you will get the icons of available services (Figure 3.).
Now double click on the PC Suite service.

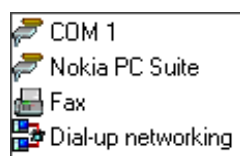


Figure 3. List of available services.

5. When you get the “pair with XXXX” on your phone screen press “Accept” on your phone
6. Type Bluetooth Passkey/Passcode if asked
- the same passkey to both your phone and your laptop (can be anything e.g. “1234”)
7. Press OK on your phone
8. Connection is established when the Nokia xxx -icon is green and yellow (Figure 4.)



Figure 4. Active connection icon

9. Now you need to disconnect the Bluetooth connection. Select (click once on) the Nokia phone icon or the Local Service that you want to disconnect your device from. Select the item Disconnect on the Bluetooth menu or click the Disconnect button.

2.1 Setting up your laptop for Bluetooth connection using Nokia Connection Manager

1. Insert Nokia DTL-4 or Socket Bluetooth Card in to your laptop unless you already did this.
2. Open Nokia Connection Manager by double clicking on the Nokia Connection Manager icon in the task tray (Figure 5.)



Figure 5. Nokia Connection Manager icon (marked red in the picture)

3. When a Bluetooth connection type is selected (highlighted in green in the picture) it shows the phone that is connected to your PC.
- select the phone from the list and then click Apply. Currently selected phone has small phone icon on the left side like Nokia 6310i has in the Figure 6.

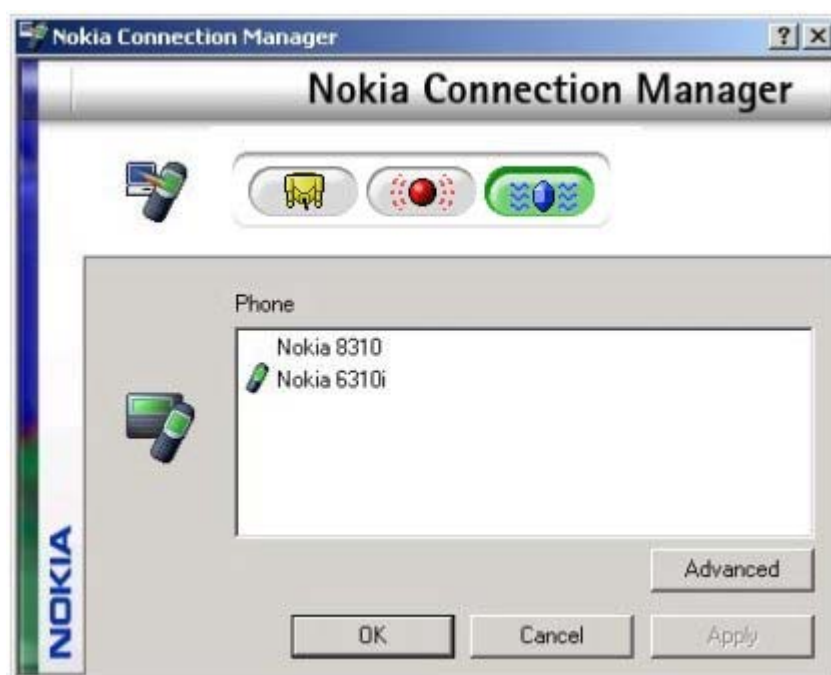



Figure 6. Nokia Connection Manager



4. Now you can start to use Nokia PC Suite applications or Nokia Modem Options with your phone via Bluetooth connection.

3. USING THE BLUETOOTH CONNECTION

Below described some usage cases of Bluetooth connection:

1. With Nokia 6310i you can use via Bluetooth
 - all the PC Suite applications (Phone Editor, Sync, Application Installer...)
 - Dial-Up connections (HSCSD, GPRS)

4. TROUBLESHOOTING

- If link establishment is not carried out successfully, your phone may have been set to reject attempts at Link Establishment
- The distance between your Nokia phone and the laptop may be too great (over 10 meters)
- If you have two Bluetooth devices in your laptop (integrated and the Nokia DTL-4 or Socket card) you need to disable the other before you can use Nokia DTL-4 or Socket Card.