



SUPPORT GUIDE FOR THE BLUETOOTH DEVICES USING SPHINX BLUETOOTH DRIVERS

NOKIA

Copyright © Nokia. All rights reserved | Date: 27.01.03, ver. 1.0





Contents

1. INTRODUCTION AND BASIC REQUIREMENTS	3
2. ESTABLISHING BLUETOOTH CONNECTION	3
3. USING THE BLUETOOTH CONNECTION	6
4. TROUBLESHOOTING	7

Copyright © Nokia. All rights reserved.

Reproduction, transfer, distribution or storage of part or all of the contents in this document in any form without the prior written permission of Nokia is prohibited.

Nokia and Nokia Connecting People are registered trademarks of Nokia Corporation. Other product and company names mentioned herein may be trademarks or tradenames of their respective owners.

Nokia operates a policy of continuous development. Nokia reserves the right to make changes and improvements to any of the products described in this document without prior notice.

Under no circumstances shall Nokia be responsible for any loss of data or income or any special, incidental, consequential or indirect damages howsoever caused.

The contents of this document are provided "as is". Except as required by applicable law, no warranties of any kind, either express or implied, including, but not limited to, the implied warranties of merchantability and fitness for a particular purpose, are made in relation to the accuracy, reliability or contents of this document. Nokia reserves the right to revise this document or withdraw it at any time without prior notice

The availability of particular products may vary by region. Please check with the Nokia dealer nearest to you.



1. INTRODUCTION AND BASIC REQUIREMENTS

Note: The information in this document is furnished for information only, is subject to change without notice, may contain errors or inaccuracies, and represents no commitment whatsoever.

Note: Before proceeding please check the software version of your Nokia 6310i phone. It should be **5.50** or higher. Key in with your phone “*#0000#” and you should see the software version of your phone (Figure 1.).

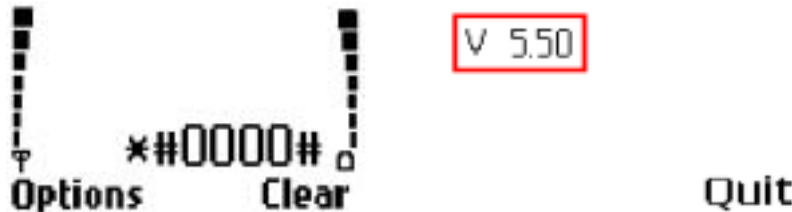


Figure 1. Checking the software version of your phone. After keying in the “*#0000#” you should see the software version. The software version is on the first row after “V”.

How to make a Bluetooth connection between your Nokia phone and your laptop computer.

- You need a laptop with a Bluetooth adapter and the accompanying Bluetooth software suite should be installed on the computer before continuing

Verified PC-CARD:

- HighPerTec Bluetooth PC-CARD

Verified Bluetooth Windows software

- Sphinx Bluetooth Monitor version 1.16.8 Build 11

Verified Windows operating system versions:

- Windows XP Professional

- a Nokia 6310i phone and Nokia PC Suite 4.88 and/or Nokia Modem Options are the basic requirements for using the Bluetooth connection

Please check the nokia.com Nokia 6310i support section for other supported Bluetooth devices and Support guides for them.

2. ESTABLISHING BLUETOOTH CONNECTION

First set up your Nokia phone for Bluetooth use according to User Manual. For example in Nokia 6310i

1. Menu - Bluetooth – Bluetooth settings - My phone's visibility –menu and check that it is set to “Shown to all” and
2. Then name your phone (Menu - Bluetooth – Bluetooth settings - My phone's name – menu)
3. After Naming your Nokia 6310i turn the Bluetooth on (Bluetooth menu's first menu item).



Figure 1. Bluetooth radio ON symbol on the phone display

Now set up your laptop for Bluetooth connection using Sphinx Bluetooth Monitor.

1. Connect your Bluetooth device to your laptop and check that the Bluetooth radio is active
2. Start Bluetooth Monitor either from the task tray (Figure 2) or from Start - All programs (Win XP or Start - Programs in Win 2000) - PICO Card - Bluetooth Monitor.

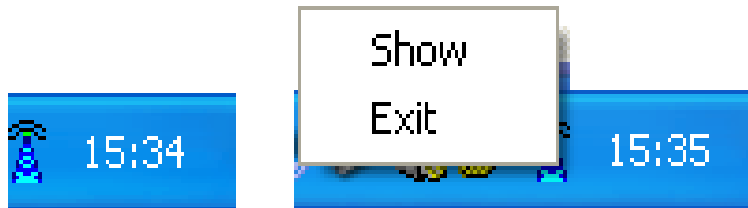


Figure 3. Move your mouse cursor over the Bluetooth Monitor icon and click the right mouse button on the icon to open the menu, now select Show from the menu and the Bluetooth Monitor Window should open.

3. Now click on the “Search Devices”. After a while you should have a list of Bluetooth devices within range (Figure 3).

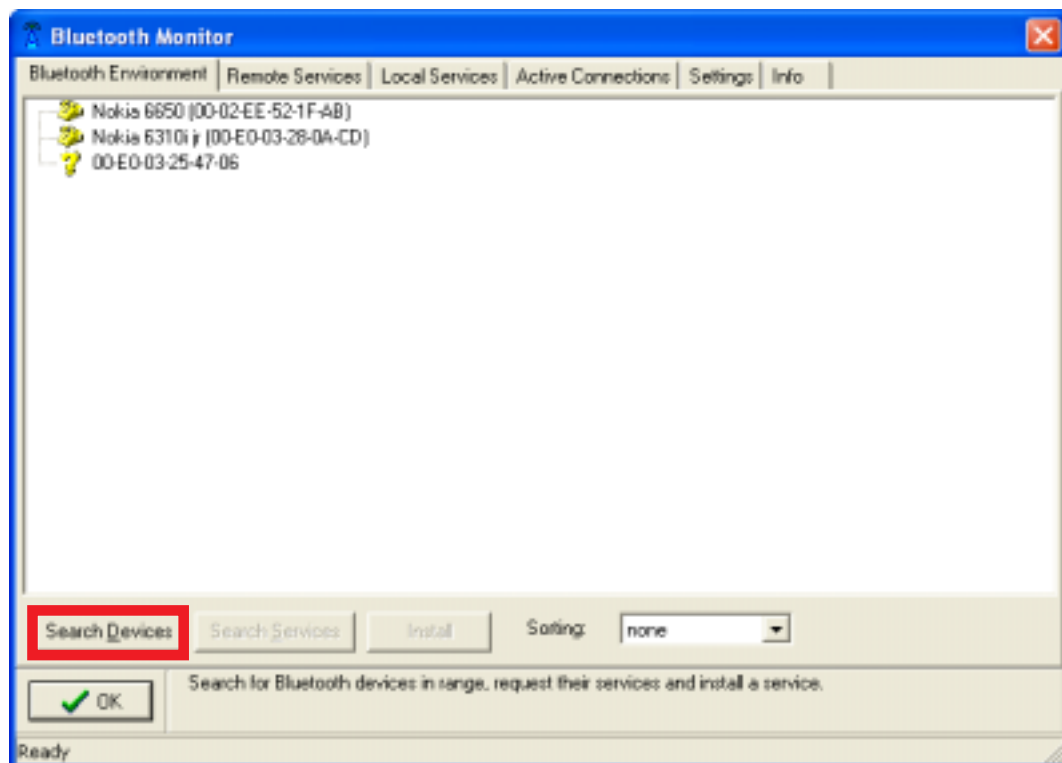


Figure 3. List of Bluetooth devices in range. The “Search Devices” button is marked red in the picture.

4. Now locate your Nokia phone from the list of devices found and double click on the device name. Now you see a list of available services for your Nokia phone (Figure 4).

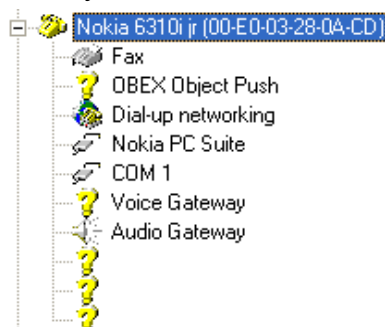


Figure 4. List of services for your Nokia phone.

5. Now double click on the “Nokia PC Suite” service and select a COM port for the Nokia PC Suite service (Figure 5). Please note! It is advised to select a COM port COM5 or higher because e.g. COM2 is usually reserved by the system all ready and may cause a conflict.

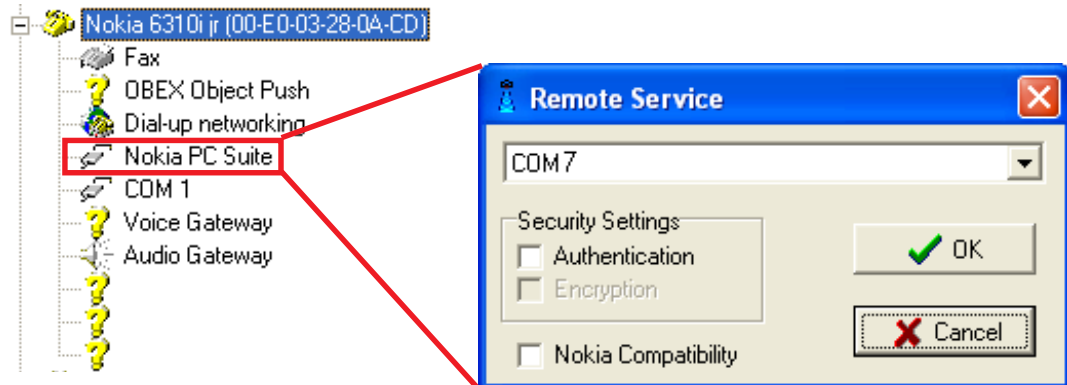


Figure 4. Selecting COM port for Remote Service. Please note that it is not required to select “Nokia Compatibility”.

6. After you click OK on the Remote Service dialogue box you will be prompted to test the connection just click “Test” and

- 6.1. Your phone asks “Pair with?...” press “Accept” on your phone
- 6.2. Enter Passkey, if asked, on your phone and for your computer (can be anything e.g. “1234”)
- 6.3. Now you should see “disconnected” text on your phone display and also a new dialogue box appears on to PC screen. Just click OK.
- 6.4. Now there is the COM port shown next to Nokia PC Suite service text and also the Nokia PC Suite service text is written in Bold.

7. Start Nokia Connection Manager by double clicking on its icon in the task tray and choose Bluetooth connection (marked red in the Figure 5.). Now you should see your phone listed on the Nokia Connection Manager window.

8. Choose your phone from the list and click Apply (Figure 5.)



Figure 5. Nokia Connection Manager.

9. Now Nokia Connection Manager asks for the Bluetooth serial port (Figure 6). Choose the same COM port that you selected in step 5 and click "Accept".

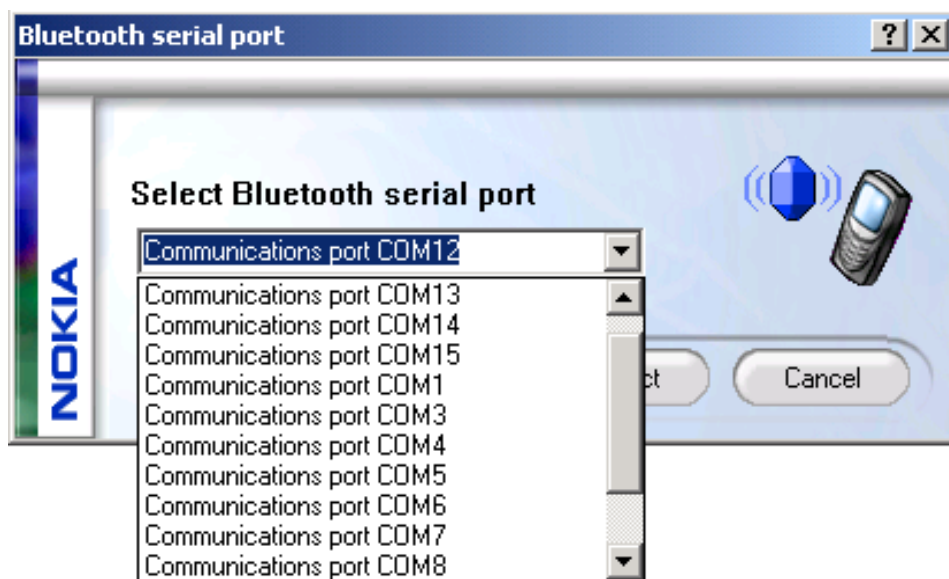


Figure 6. Selecting the COM port

10. If your phone asks you "Pair with.." or "Connect with..." just press "Accept" on the phone.
11. Now you should have a small phone figure on the left side of your phone name in the Nokia Connection Manager (Figure 7).

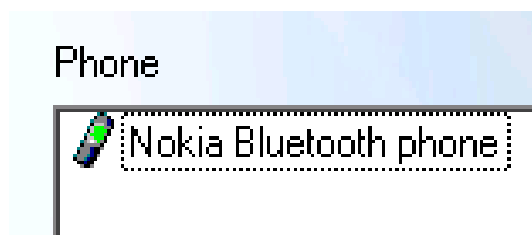


Figure 7. Nokia Connection Manager window showing the currently active connection.

12. Now you can start to use Nokia PC Suite applications or Nokia Modem Options with your phone via Bluetooth connection.
13. It is recommended to end the Bluetooth connection after using the Nokia PC Suite applications. Click on the Bluetooth connection button in the Nokia Connection Manager to end the connection.

3. USING THE BLUETOOTH CONNECTION

Below are some usage cases of Bluetooth connection:

With Nokia 6310i you can use via Bluetooth

- all the PC Suite applications (Phone Editor, Sync, Application Installer...)
- Dial-Up connections (HSCSD, GPRS), please note that the Bluetooth modem driver needs to be installed manually.



4. TROUBLESHOOTING

- If the connection is not carried out successfully, your phone may have been set to reject attempts at Link Establishment. Also verify that the selected COM port is free
- The distance between your Nokia phone and the laptop may be too great (over 10 meters)
- If you have two Bluetooth devices installed in your laptop (e.g. one integrated and USB Bluetooth adapter) you need to disable the other Bluetooth device and you may also need to uninstall the other drivers, please consult the manufacturer on this issue for more information.