



# **SUPPORT GUIDE FOR THE BLUETOOTH DEVICES USING TOSHIBA BLUETOOTH DRIVERS**

**NOKIA**

Copyright © Nokia. All rights reserved | Date: 27.01.03, ver. 1.0





# Contents

1. INTRODUCTION AND BASIC REQUIREMENTS .....	3
2. ESTABLISHING BLUETOOTH CONNECTION .....	3
3. USING THE BLUETOOTH CONNECTION .....	7
4. TROUBLESHOOTING .....	7

**Copyright © Nokia. All rights reserved.**

Reproduction, transfer, distribution or storage of part or all of the contents in this document in any form without the prior written permission of Nokia is prohibited.

Nokia and Nokia Connecting People are registered trademarks of Nokia Corporation. Other product and company names mentioned herein may be trademarks or tradenames of their respective owners.

Nokia operates a policy of continuous development. Nokia reserves the right to make changes and improvements to any of the products described in this document without prior notice.



Under no circumstances shall Nokia be responsible for any loss of data or income or any special, incidental, consequential or indirect damages howsoever caused.

The contents of this document are provided "as is". Except as required by applicable law, no warranties of any kind, either express or implied, including, but not limited to, the implied warranties of merchantability and fitness for a particular purpose, are made in relation to the accuracy, reliability or contents of this document. Nokia reserves the right to revise this document or withdraw it at any time without prior notice

The availability of particular products may vary by region. Please check with the Nokia dealer nearest to you.



## 1. INTRODUCTION AND BASIC REQUIREMENTS

-  **Note:** The information in this document is furnished for information only, is subject to change without notice, may contain errors or inaccuracies, and represents no commitment whatsoever.
-  **Note:** Before proceeding please check the software version of your Nokia 6310i phone. It should be **5.50** or higher. Key in with your phone “\*#0000#” and you should see the software version of your phone (Figure 1.).

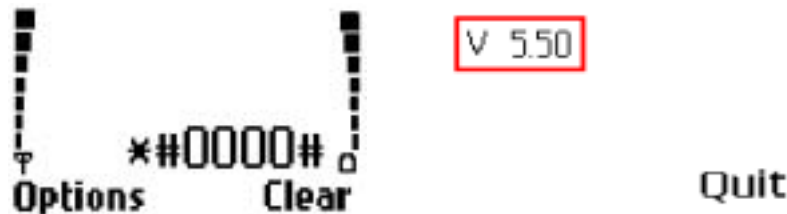


Figure 1. Checking the software version of your phone. After keying in the “\*#0000#” you should see the software version. The software version is on the first row after “V”.

How to make a Bluetooth connection between your Nokia phone and your laptop computer.

- You need a laptop with one of the following Bluetooth cards/adapters or integrated Bluetooth and accompanying Bluetooth software suite should be installed on the computer before continuing

Integrated Bluetooth

- Toshiba integrated Bluetooth

Verified Windows operating system versions:

- Windows 2000 / XP Professional

- a Nokia 6310i phone and Nokia PC Suite 4.88 and/or Nokia Modem Options are the basic requirements for using the Bluetooth connection

Please check the [nokia.com](http://nokia.com) Nokia 6310i support section for other supported Bluetooth devices and Support guides for them.

## 2. ESTABLISHING BLUETOOTH CONNECTION

First set up your Nokia phone for Bluetooth use according to User Manual. For example in Nokia 6310i

1. Menu - Bluetooth – Bluetooth settings - My phone’s visibility –menu and check that it is set to “Shown to all” and
2. Then name your phone (Menu - Bluetooth – Bluetooth settings - My phone’s name – menu)
3. After naming your Nokia 6310i turn the Bluetooth on (Bluetooth menu’s first menu item).



Figure 2. Bluetooth radio ON symbol on the phone display

Now set up your laptop for Bluetooth connection using Bluetooth Service Center.


1. Make sure the Bluetooth radio is active. In task tray click left mouse button on  icon and select Power ON if Auto Power ON is not activated.



Figure 3. Checking that Bluetooth Radio is on.

2. Start Bluetooth Service Center program either from the Desktop or Start - All Programs (in Win XP, in Win 98SE/ME/2000 Programs) - Bluetooth Toshiba Stack - Bluetooth Service Center.  
3. Now go to Bluetooth menu and select Device Discovery (Figure 4)



Figure 4. Bluetooth Device Discovery

4. Choose your phone from the list and then go to Bluetooth menu and select Bluetooth service search (figure 5 step 1.)
5. Type in Bluetooth passkey (can be anything e.g. "1234") and press OK (Figure 5 step 2.). Then press "Accept" on your phone and key in the same Passcode to your phone.

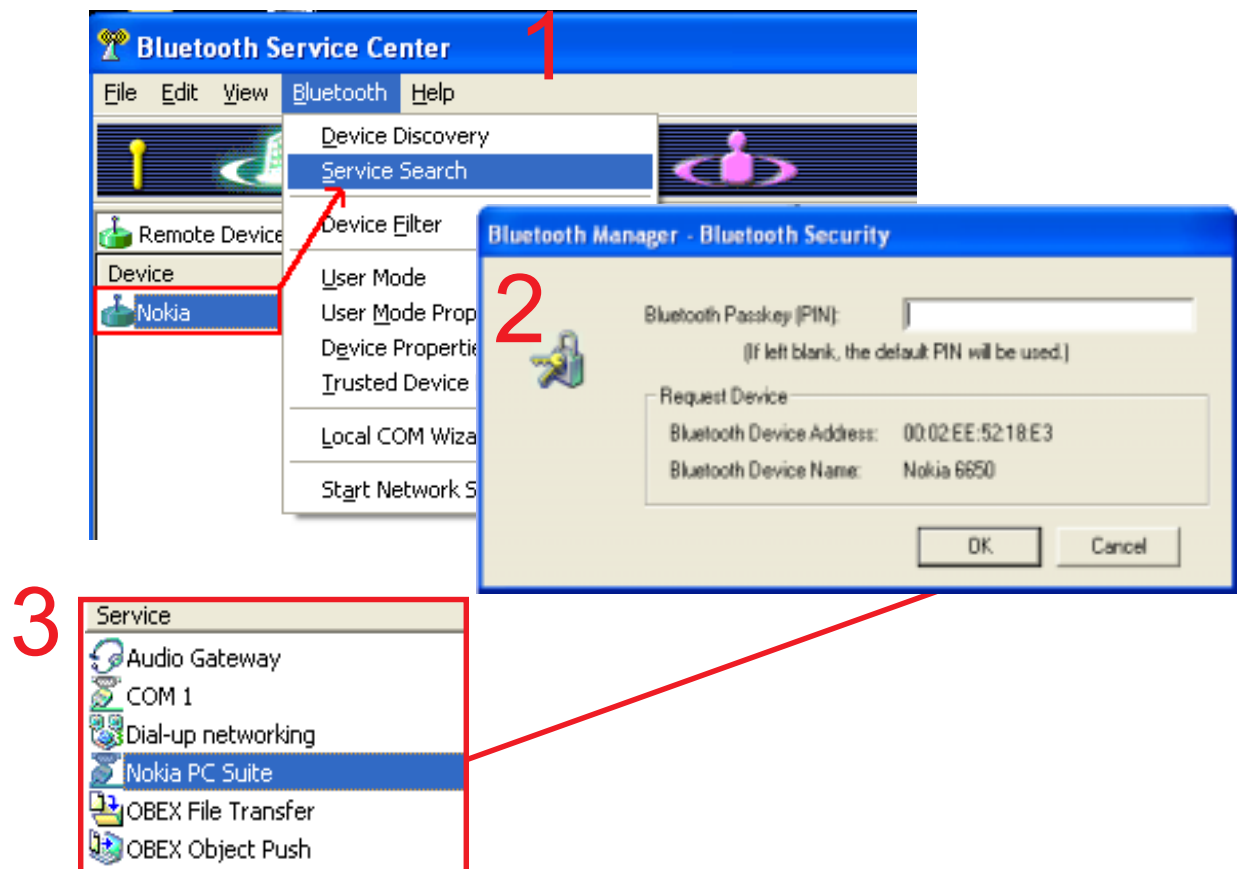


Figure 5. Making Service Search and a list of services found in the phone selected.

6. Choose Nokia PC Suite service from the services list and then go to the Edit menu and select Connect (Figure 6). Please note that it is recommended to Disconnect the Bluetooth connection after using Nokia PC Suite applications or Modem.

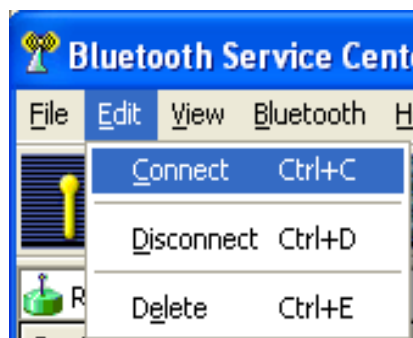


Figure 6. Edit menu

7. If your phone asks for confirmation "pair with" just press accept on your phone.
8. Now select Local Device from the drop down list. On the right side you will see currently allocated COM ports and connect status of the ports (Figure 7).



Figure 7. Connect status of the ports.

9. Start Nokia Connection Manager by double clicking on it's icon in the task tray and choose Bluetooth connection (marked red in the Figure 8.). You should see now your phone listed on the Nokia Connection Manager window.
10. Choose your phone from the list and click Apply (Figure 8.)

**Note:** The Nokia Connection Manager may look different depending on the Nokia PC Suite version you are using.



Figure 8. Nokia Connection Manager.

11. Now Nokia Connection Manager asks for the Bluetooth serial port (Figure 9). Select from the list the same COM port that was shown with Connected status in step 8.



Figure 9. Selecting the COM port

12. If your phone asks you "Pair with.." just press "Accept" in the phone.
13. Now you should have a small phone figure on the left side of your phone name in the Nokia Connection Manager (Figure 10).



Figure 10. Nokia Connection Manager window showing the currently active connection.

14. Now you can start to use Nokia PC Suite applications or Nokia Modem Options with your phone via Bluetooth connection. Please note that it is advised to disconnect the Bluetooth connection after using the Nokia PC Suite applications or modem as advised in step 6.

### 3. USING THE BLUETOOTH CONNECTION

---

Below are some usage cases of Bluetooth connection:

With Nokia 6310i you can use via Bluetooth

- all the PC Suite applications (Phone Editor, Sync, Application Installer...)
- Dial-Up connections (HSCSD, GPRS), please note that the Bluetooth modem driver needs to be installed manually.

### 4. TROUBLESHOOTING

---

- If the connection is not carried out successfully, your phone may have been set to reject attempts at Link Establishment
- The distance between your Nokia phone and the laptop may be too great (over 10 meters)
- If you have two Bluetooth devices installed in your laptop (e.g. one integrated and USB Bluetooth adapter) you need to disable the other Bluetooth device and you may also need to uninstall the other drivers, please consult the manufacturer's on this issue for more information.
- If there are no ports allocated, please do the following:
  1. Go to the Bluetooth-menu and select Local COM Wizard
  2. Select "Create a Bluetooth virtual COM port for a client"
  3. Following dialog will be seen (Figure 11)
  4. Select wanted COM port and push Finish
  5. New virtual port is created for the use of Toshiba BT.

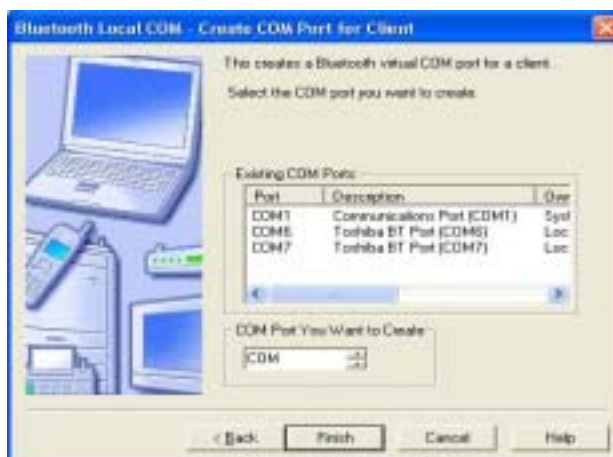


Figure 11. Local COM port Wizard.