

NOKIA 6600



SUPPORT GUIDE FOR EMAIL SETTINGS IN NOKIA 6600 IMAGING PHONE

NOKIA



Contents

- 1. INTRODUCTION 1
- 2. EMAIL ACCOUNT SETTINGS ON PHONE..... 1
- 3. EMAIL ACCOUNT SETTINGS WITH PC SUITE 4

Legal Notice

Copyright © 2003 Nokia. All rights reserved.

Reproduction, transfer, distribution or storage of part or all of the contents in this document in any form without the prior written permission of Nokia is prohibited.

Nokia and Nokia Connecting People are registered trademarks of Nokia Corporation. Other product and company names mentioned herein may be trademarks or tradenames of their respective owners.

Nokia operates a policy of continuous development. Nokia reserves the right to make changes and improvements to any of the products described in this document without prior notice.

Under no circumstances shall Nokia be responsible for any loss of data or income or any special, incidental, consequential or indirect damages howsoever caused.

The contents of this document are provided "as is". Except as required by applicable law, no warranties of any kind, either express or implied, including, but not limited to, the implied warranties of merchantability and fitness for a particular purpose, are made in relation to the accuracy, reliability or contents of this document. Nokia reserves the right to revise this document or withdraw it at any time without prior notice.



1. INTRODUCTION

For reading and sending e-mail with the Nokia 6600 phone's e-mail client, you need to have an Access Point (AP) configured on your Nokia 6600 phone. For further information on how to configure APs please refer to the user's guide of your phone.

You also need to have a compatible e-mail account that supports SMTP protocol for sending e-mail, and POP3 or IMAP4 protocol for receiving e-mail. Some service providers may have limitations in their services.

Your service provider may be able to send some or all of the required settings to you via a special short message called an Over The Air (OTA) configuration message. After you have received and saved the settings, you can start using the e-mail application or edit the settings as described below.



Note: The necessary settings for mail configuration are provided by your e-mail service provider. Depending on your service provider you may not need to fill in all of the settings. If your mail settings are incomplete or incorrect, please contact your Service Provider. An e-mail service provider can be your employer or a commercial ISP, for example.

2. EMAIL ACCOUNT SETTINGS ON PHONE

In order to connect to your electronic mailbox service, you need to define your remote mailbox on your Nokia 6600 phone.

1. Open the Messaging folder.
2. Press **Options** and select **Settings** from the list.
3. Highlight **E-mail** and press the joystick to select it.
4. Press the joystick when the focus is on **Mailboxes**.
 - If there is no mailbox defined you will get pop-up asking if you want define it now. Press **Yes**.
 - If you have already defined the mailbox you will get a list of mailboxes. To define a new mailbox press **Options** and select **New mailbox** from the list.

All fields marked with an * are mandatory fields and must be completed.

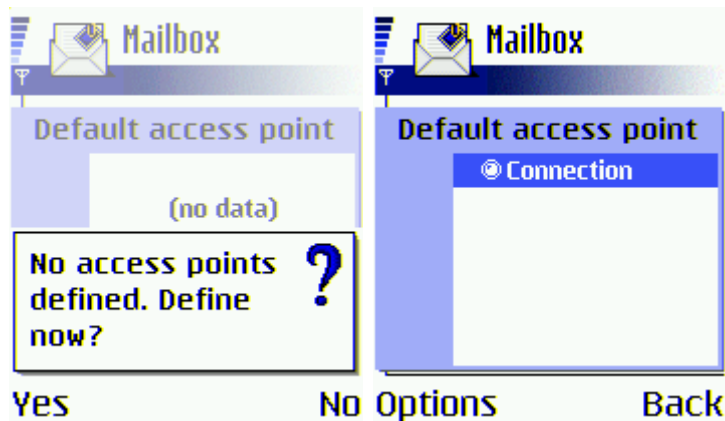
5. **Mailbox name:** Enter the name of the remote mailbox under *Mailbox name*. The name can be entered freely (e.g. My mail, John's mail etc.).
6. **Access point in use:** Choose from the list containing all available APs. Note that you must be able to connect to



the remote mailbox via the given AP. For example, if you are accessing your company's intranet mailbox, you may need to use the Access Point for your company's intranet.



Note: If there is no AP defined you will get a pop-up asking if you want to define it now. For further information on how to configure APs please refer to the user guide.



Note: You can use WAP access point if your mail service allows it.

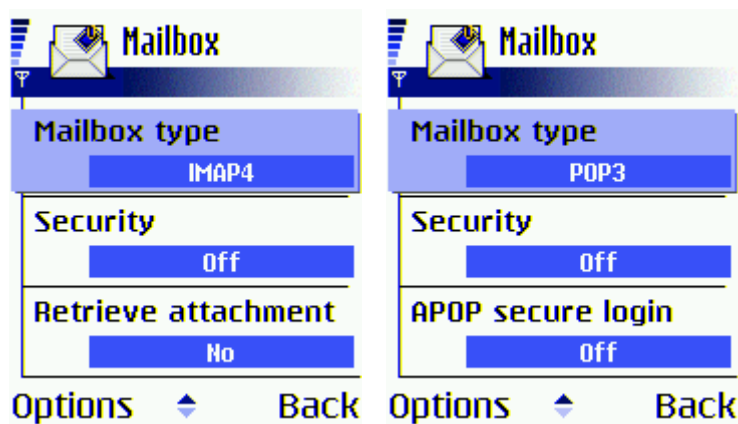
7. **My mail address:** Type in the e-mail address given to you by your service provider. The address must contain the @ character. This address will be shown as the originating (From) address in your messages.
8. **Outgoing mail server:** Enter the *Outgoing mail server* IP address or host name. This is also known as the SMTP server, sending server or mail relay. When you are sending e-mail, your Nokia 6600 phone connects to this server and sends the mail. This server will then relay the mail towards the recipient's mail server. The outgoing mail server should be in one of the following example formats - 123.123.123.123 or mail.server.com.
9. **Send message:** Options are **Immediately** (Tries to make connection and send the message automatically) or **During next conn.** (mail is saved to Outbox and will be sent when you are connected to remote mailbox next time (or you can go to Outbox and send it manually **Options>send**)).
10. **Send copy to self:** Select whether you want to send a copy of sent mail to your own mail address. The options are **Yes / No**.
11. **Include signature:** Select whether your signature is attached to sent mail. The options are **Yes / No** (if selecting Yes you can then create a signature file for mails you send).
12. Type **Username and Password**.



Tip: Usually the name and password are the same ones you use for your Access Point (PPP authentication). However, if your e-mail Service provider is different

from the Internet Service Provider, this may not be the case. Note that both the username and password may be case-sensitive (capitalisation of letters matters).

13. **Incoming mail server:** Enter the *Incoming mail server* IP address or host name. This is also known as the IMAP or POP server (depending on the account type) or the remote mailbox server. When you receive mail, the mail will be stored on this server. During mail retrieval, your Nokia 6600 phone connects to this server in order to download the mails.
14. **Mailbox type:** Select *Mail account type* (**POP3** or **IMAP4**). This defines the mail protocol your mailbox service provider recommends. POP3 may be slightly faster in some situations, but IMAP4 gives the user more control over the mailbox and mail retrieval.



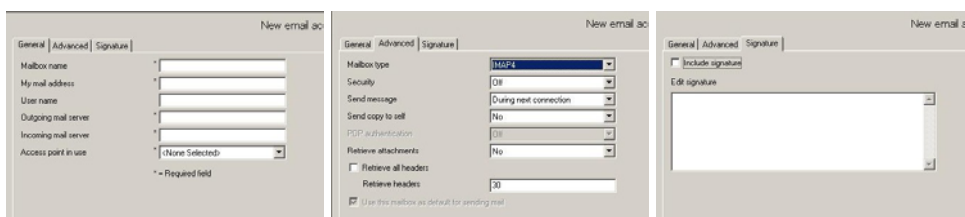
15. **Security:** The options are **On / Off**. Please check with your e-mail service provider whether this option can be used.
16. **APOP secure login :** The options are **On / Off**. Please check with your e-mail service provider whether this option can be used. This option is available only if your mailbox type is POP3. It offers increased security for the username and password at login.
17. **Retrieve attachment:** The options are **Yes / No** (if you want the attachment to be fetched automatically, while the mail message is fetched. Downloading both attachment and mail takes naturally longer time than downloading only the mail message). This option is available only if your mailbox type is IMAP4.
18. **Retrieve headers :** Here you can define how many mail headers are displayed in your mailbox. The options are **All** or **a User defined**. This option is available only if your mailbox type is IMAP4.
19. Press **Back** to save remote mailbox settings.
20. Press **Back** a few times to get back to Messaging application main view.

You have now set up a mail account to your Nokia 6600 phone.

3. EMAIL ACCOUNT SETTINGS WITH PC SUITE

You can enter the same settings to your Nokia 6600 phone using Settings Wizard in PC Suite for Nokia 6600 once you have installed it on a compatible PC.

1. Connect your phone to a compatible PC via Bluetooth technology or infrared (IrDA) connection and open up PC Suite for Nokia 6600.
2. Select **Settings Wizard** from the toolbar on the left-hand side.
3. Press the **Next** button
4. Select **Change Phone Settings Manually** and press the **Next** button
5. Select **E-mail Accounts** and press the **Next** button
6. Select **Add a New E-mail Account** and press the **Next** button
7. If you already have an E-mail account defined on your Nokia 6600 phone you will get an option to copy existing mail account or create a new account from scratch.
8. Now you can enter settings to the PC Suite.



9. When the account is ready press the **Finish** button to send the account to your Nokia 6600 phone.

You have now set up a mail account to your Nokia 6600 phone.