

NOKIA 9500

Communicator



9235071

Issue 2 EN

Nokia and Nokia Connecting People are registered trademarks of Nokia Corporation

Nokia 9500 Communicator

Backing up data

Legal Notice

Copyright © Nokia 2004. All rights reserved.

Reproduction, transfer, distribution or storage of part or all of the contents in this document in any form without the prior written permission of Nokia is prohibited. Nokia and Nokia Connecting People are registered trademarks of Nokia Corporation. Other product and company names mentioned herein may be trademarks or trade names of their respective owners.

Nokia operates a policy of ongoing development. Nokia reserves the right to make changes and improvements to any of the products described in this document without prior notice.

Under no circumstances shall Nokia be responsible for any loss of data or income or any special, incidental, consequential or indirect damages howsoever caused.

The contents of this document are provided "as is". Except as required by applicable law, no warranties of any kind, either express or implied, including, but not limited to, the implied warranties of merchantability and fitness for a particular purpose, are made in relation to the accuracy, reliability or contents of this document. Nokia reserves the right to revise this document or withdraw it at any time without prior notice.

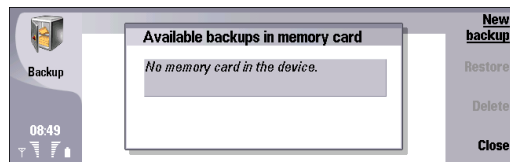
Copyright to the Windows screenshots belongs to Microsoft.

Contents

Introduction	4
Backing up data	5
On memory card	5
On PC	5
Restoring backup data.....	9
From memory card	9
From PC	9

Introduction

↩ Select **Desk** → **Tools** → **Backup**.



The purpose of this support guide is to help you create backup copies of your messages, and calendar and contact data. You can create these copies on your memory card.

Before you begin creating backup files, do the following:

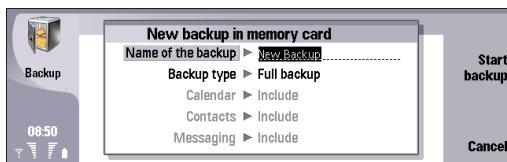
- Close all other applications.
- Switch off the cover phone if possible.
- Make sure you have enough battery power.

Backing up data

On memory card

- 1 Insert a memory card (MMC) into the device.
- 2 Press **New backup**.
- 3 In the *New backup in memory card* window, define the following:
 - *Name of the backup* — Enter a name for the backup.
 - *Backup type* — Select the type of backup you wish to perform (*Full backup* or *Partial backup*).

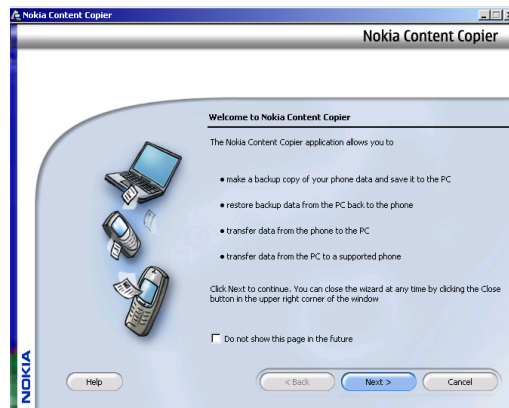
Full backup copies all of your messages, calendar and contact data, settings, documents, and bookmarks. *Partial backup* allows you to specify which items you want to include in the backup.



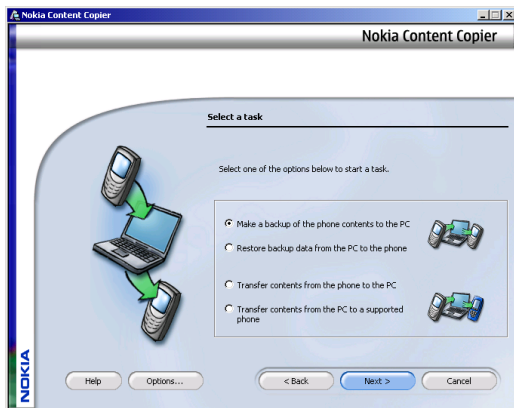
- 4 After selecting the desired data, press **Start backup**. If a memory card is not inserted before starting the backup, your settings will be reset and you will have to create the new backup file again.

On PC

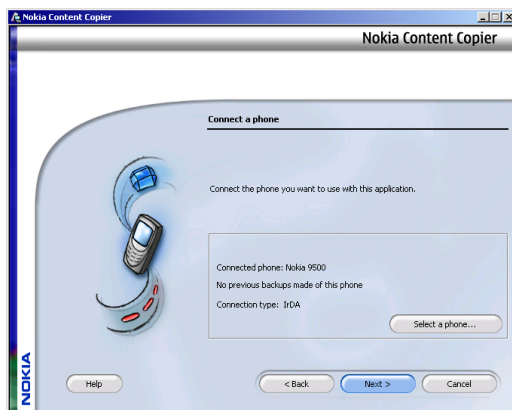
- 1 Connect your Nokia 9500 Communicator to a PC that has Nokia PC Suite for Nokia 9500 Communicator installed.
- 2 Open *Nokia PC Suite* for Nokia 9500 Communicator on the PC, and doubleclick **Backup and restore**. The *Nokia Content Copier* opens.
- 3 Click **Next** to continue.



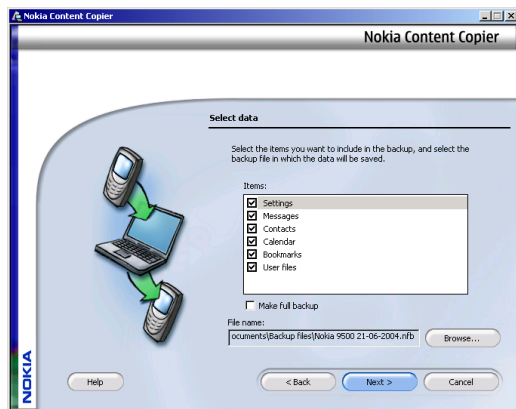
- 4 Select *Make a backup of the phone contents to the PC*, and click *Next*.



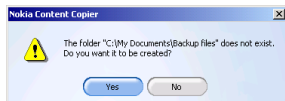
- 5 Make sure the application recognizes your device. If the device is not correct, make sure it is connected correctly, and click *Select a phone*. If the device is connected correctly, click *Next* to continue.



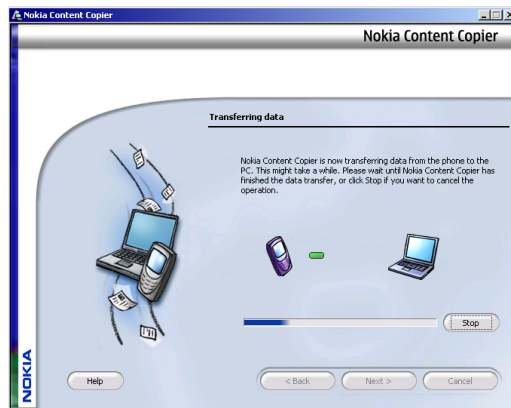
- 6 Select the data you want to back up, and define a file name and location for the backup file. When you are done, click **Next** to continue.



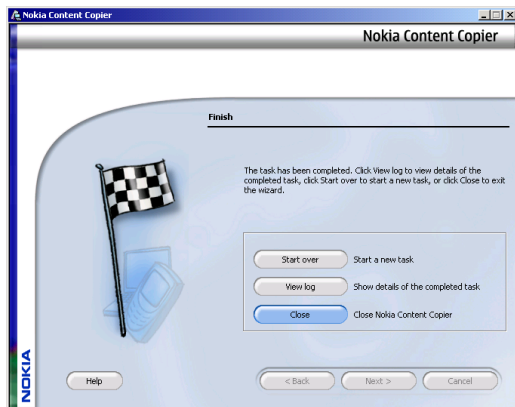
- 7 If the folder you specified for the backup files does not exist, click **Yes** to confirm that the folder can be created.



- 8 The data is backed up on your PC. To stop the data transfer, click **Stop**.



- 9 After the backup has finished, click **Close** to finish and close Nokia Content Copier, **View log** to view details of the backup, or **Start over** to start a new task.



Restoring backup data

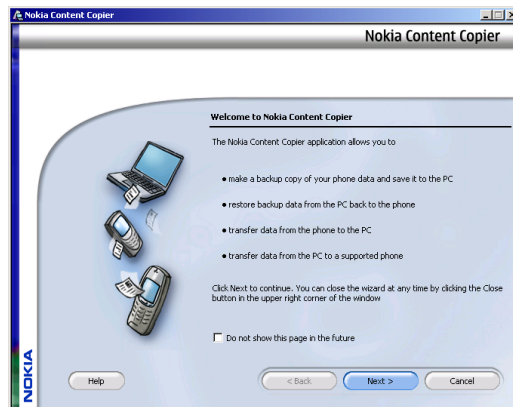
From memory card

- 1 Select the backup you wish to restore, and press **Restore**.
- 2 Choose if you want to restore all backup data or selected items only.
- 3 If you chose *Partial backup*, you must specify which items you want to restore.
- 4 Press **Start restore**.

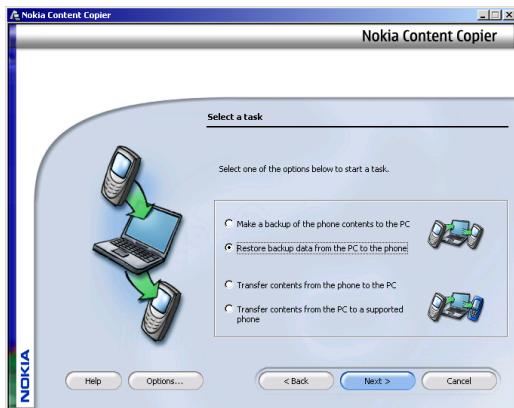
From PC

- 1 Connect your Nokia 9500 Communicator to a PC that has Nokia PC Suite for Nokia 9500 Communicator installed.
- 2 Open *Nokia PC Suite* for Nokia 9500 Communicator on the PC, and doubleclick **Backup and restore**. The *Nokia Content Copier* opens.

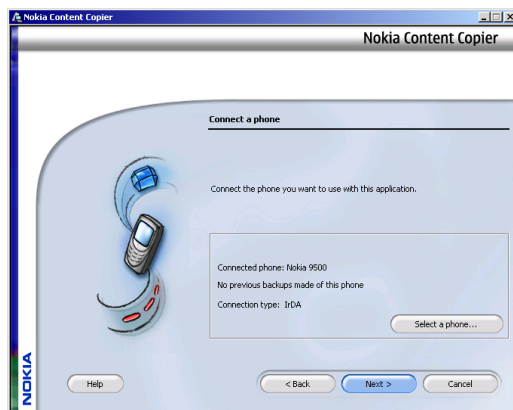
- 3 Click **Next** to continue.



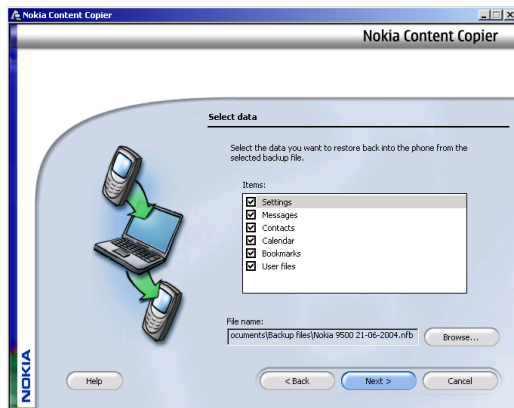
- 4 Select *Restore backup data from the PC to the phone*, and click **Next**.



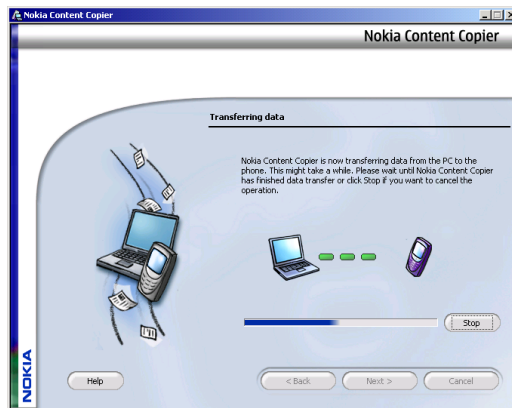
- 5 Make sure the application recognizes your device. If the device is not correct, make sure it is connected correctly, and click **Select a phone**. If the device is connected correctly, click **Next** to continue.



- 6 Select the data you want to restore, and define the file that contains the backup data. When you are done, click **Next** to continue.



- 7 The data is restored to your Nokia 9500 Communicator. To stop the data transfer, click **Stop**.



- 8 Click **OK** to restart your Nokia 9500 Communicator.



- 9 After the restore has finished, click **Close** to finish and close Nokia Content Copier, **View log** to view details of the restore, or **Start over** to start a new task.

