

NOKIA 9500

Communicator



9235086
Issue 2 EN

Nokia and Nokia Connecting People are registered trademarks of Nokia Corporation

Nokia 9500 Communicator

Synchronizing data

Legal Notice

Copyright © Nokia 2004. All rights reserved.

Reproduction, transfer, distribution or storage of part or all of the contents in this document in any form without the prior written permission of Nokia is prohibited. Nokia and Nokia Connecting People are registered trademarks of Nokia Corporation. Other product and company names mentioned herein may be trademarks or trade names of their respective owners.

Nokia operates a policy of ongoing development. Nokia reserves the right to make changes and improvements to any of the products described in this document without prior notice.

Under no circumstances shall Nokia be responsible for any loss of data or income or any special, incidental, consequential or indirect damages howsoever caused.

The contents of this document are provided "as is". Except as required by applicable law, no warranties of any kind, either express or implied, including, but not limited to, the implied warranties of merchantability and fitness for a particular purpose, are made in relation to the accuracy, reliability or contents of this document. Nokia reserves the right to revise this document or withdraw it at any time without prior notice.

Copyright to the Windows screenshots belongs to Microsoft.

Contents

Introduction	4	Editing a synchronization profile.....	12
Synchronizing data using Nokia PC Suite	5	Other profile options.....	14
Editing synchronization profiles.....	10	Synchronizing data using Nokia 9500 Communicator	15
Creating a new profile	10		

Introduction

The purpose of this document is to help you synchronize Nokia 9500 Communicator e-mail, calendar and contacts information with a compatible PC or a remote Internet server.

The synchronization uses OMA Data synchronization for remote synchronization. For information on OMA Data compatibility, contact the supplier of the applications with which you want to synchronize your device.

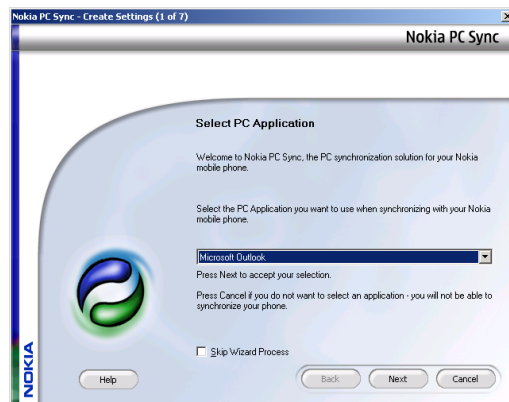
Synchronizing data using Nokia PC Suite

Nokia PC Suite connectivity software for Nokia 9500 Communicator must be installed and configured first. If you are using data cable connection, the Nokia Connectivity Cable driver must be installed. For the latest Nokia PC Suite and Nokia Connectivity Cable driver software, see the Nokia website www.nokia.com or www.nokiausa.com.

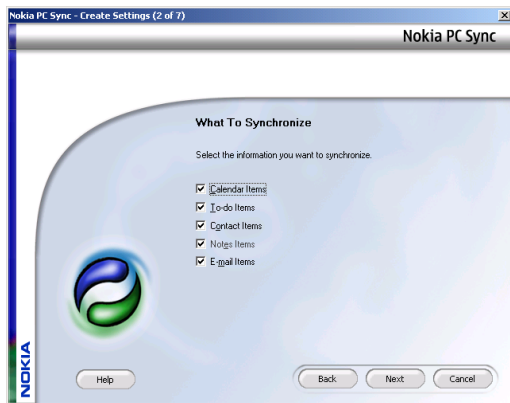
To synchronize data using Nokia PC Suite, do the following:

- 1 Connect your Nokia 9500 Communicator to a PC that has [Nokia PC Suite](#) installed.
- 2 Open [Nokia PC Suite](#) on the PC and click [Synchronize](#). If you do not have a synchronization profile, [Nokia PC Sync](#) starts a wizard for defining the synchronization settings.
To move forward in the wizard views, click [Next](#), and to move backwards, click [Back](#).

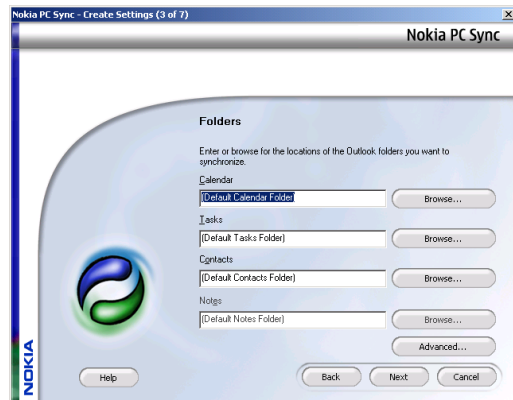
- 3 Select the PC application that you want to use to synchronize data with your Nokia 9500 Communicator.



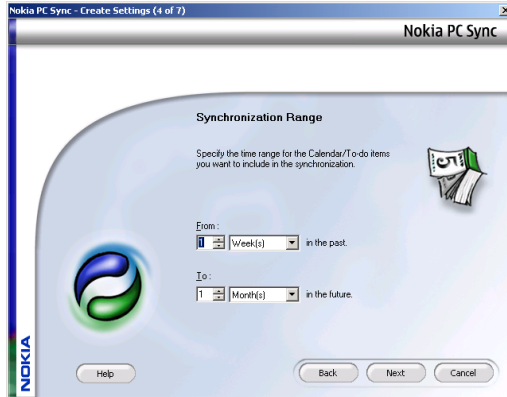
- 4 Click **Next**, and define the data on the PC that you want to synchronize with your Nokia 9500 Communicator. The data options depend on the PC application you selected as the data source.



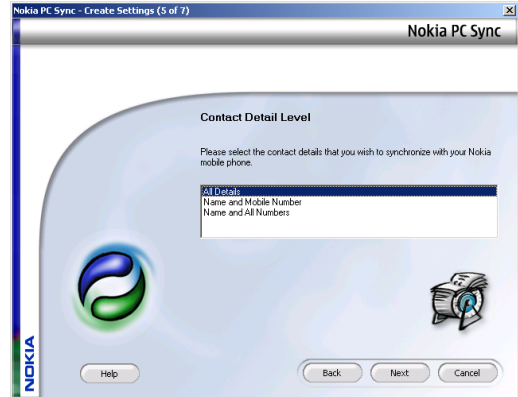
- 5 Click **Next**, and define the location of the data you select to synchronize. Click **Browse** to look for a location, and **Advanced** to define additional settings.



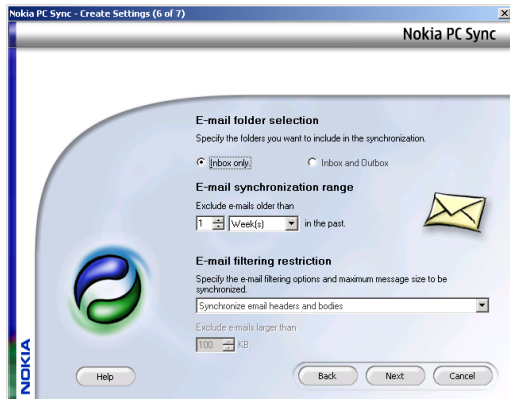
- 6 Click **Next**, and define the time range for calendar and to-do items that you select to synchronize.



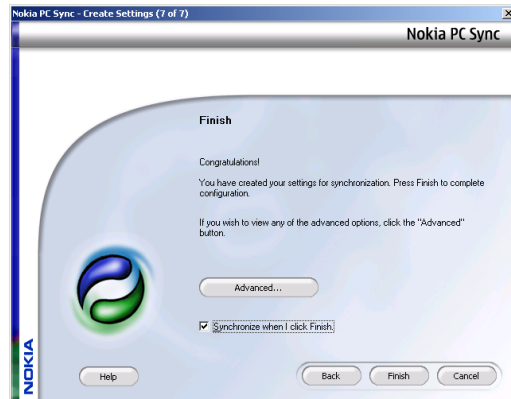
- 7 Click **Next**, and define the detail level of the synchronization for contact data.



- 8 Click **Next**, and define synchronization settings for email messages.



- 9 Click **Next**, and define whether you want to start the synchronization after you click **Finish**.

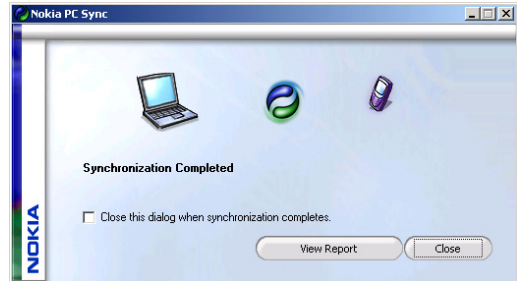


- 10 Click **Finish** to close the wizard. If you select to synchronize after clicking **Finish**, the synchronization is started.

- 11 Click [Synchronize Now](#) to start the synchronization. Note that depending on the amount of data you are synchronizing, the process may take a long time.



- 12 After the synchronization is completed, click [View report](#) to view a report of the synchronization, or [Close](#) to return to the main screen.



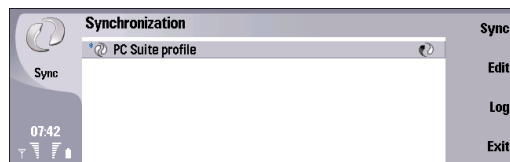
In the main screen, you have the following options:

- Click [View Last Report](#) to view a report on the last synchronization.
- Click [Properties](#) to set the synchronization settings.

To create a new PC Suite synchronization configuration, click [Properties](#), then [Create new configuration](#), and define the synchronization settings. Note that this replaces your current configuration.

Editing synchronization profiles

↩ Select **Desk** → **Tools** → **Sync**.

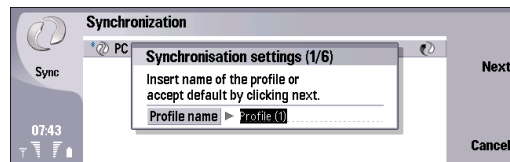


Creating a new profile

To create a new profile, do the following:

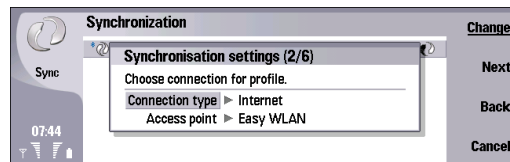
- 1 Press **Menu**, and select **File** → **New**. A profile creating wizard opens to help you define the correct settings. When the device asks if you want to copy an existing profile, select **No**. To move forward in the wizard views, press **Next**, and to move backwards, press **Back**.
- 2 In the **Synchronisation settings (1/6)** window, define the following:

- **Profile name** — Enter a descriptive name for the profile.

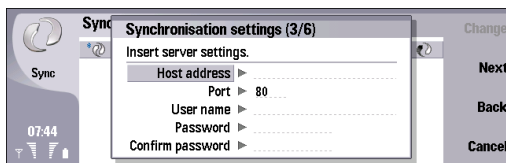


- 3 Press **Next**, and define the following:

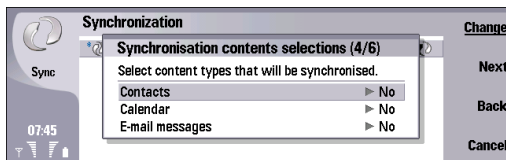
- **Connection type** — Select **Bluetooth** or **Data cable** to synchronize with a computer, or **Internet** to synchronize with a server on the Internet. If you select **Internet**, define the Internet access point details.
- **Access point** — If you selected Internet as the connection type, select an Internet access point.



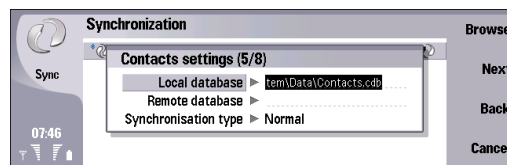
- 4 Press **Next**, and define the following:
 - **Host address** – Enter the address of the synchronization server.
 - **Port** – If you selected Internet as the connection type, enter the port number for the synchronization server.
 - **User name** – Enter your user ID for the synchronization server.
 - **Password** – Enter your password for the synchronization server.
 - **Confirm password** – Repeat the password for the synchronization server.



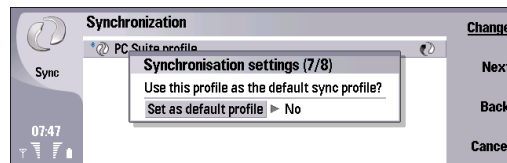
- 5 Press **Next**, and select the information to be synchronized (**Contacts**, **Calendar**, and **E-mail messages**).



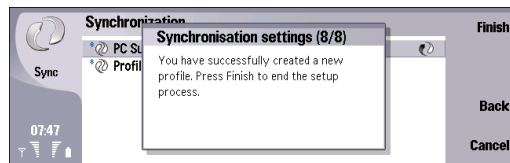
- 6 Press **Next**, and enter the paths to the Contacts, Calendar, and E-mail message databases on your device and on the remote server, and select the **Synchronisation type** from the following:
 - **Normal** – Synchronize information from the device to the remote server and back.
 - **One-way to telephone** – Synchronize information from the remote server to the device.
 - **One-way from telephone** – Synchronize information from the device to the remote server.



- 7 Press **Next**, and select whether you want to use the profile you created as a default synchronization profile.



8 Press **Next**, then **Finish** to finish the wizard.



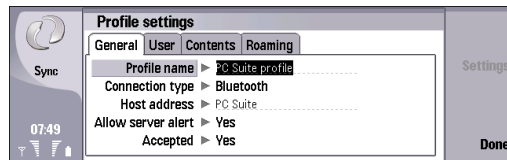
Editing a synchronization profile

Your Nokia 9500 Communicator contains a profile for Nokia PC Suite, and the basic setup is done with Nokia PC Suite. You need to edit these predefined settings only if the settings have been changed. For detailed information, see the User's Guide for Nokia PC Suite or the help for Nokia PC Sync.

To edit a synchronization profile, do the following:

- 1 Select the profile you want to edit and press **Edit**. The **Profile settings** window opens.
- 2 On the **General** page, define the following:
 - **Profile name** — Enter a unique name for the synchronization profile. The default name is **PC Suite profile**.
 - **Connection type** — Select **Bluetooth** or **Data Cable** to synchronize with a computer, or **Internet** to synchronize with a server on the Internet. If you select **Internet**, define the Internet access point details.

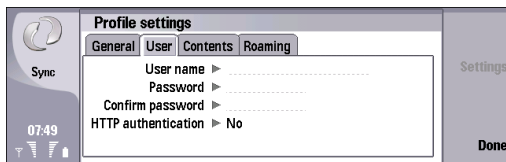
- **Host address** — Enter the address of the synchronization server.
- **Allow server alert** — Select **Yes** to allow the remote server to start the synchronization.
- **Accepted** — Select **Yes** to allow the synchronization to start without user interaction. If you select **No**, the device will display a message when a remote server tries to start the synchronization.



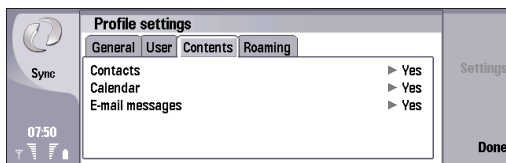
3 Press **Menu** to access the **User** page, and define the following:

- **User name** — Enter your user ID for the synchronization server.
- **Password** — Enter your password for the synchronization server.
- **Confirm password** — Repeat the password for the synchronization server.
- **HTTP authentication** — Select **Yes** to use HTTP authentication. In the **HTTP authentication** window,

define a username and password for the authentication.



- 4 Press **Menu** to access the *Contents* page, and select the information to be synchronized (*Contacts*, *Calendar*, and *E-mail messages*).

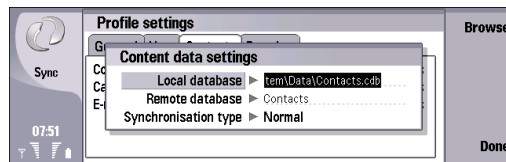


You can use a Contacts database located on a memory card.

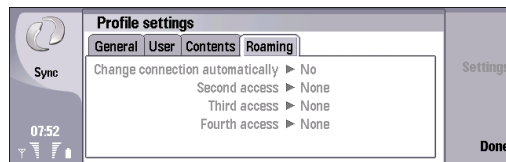
To change the content settings, press **Settings**, and define the following:

- *Local database* — Type the location and name of the local contacts database, or press **Browse** to search for a location. When you are done, press **OK**.
- *Remote database* — Type the location and name of the remote contacts database, or press **Browse** to search for a location. When you are done, press **OK**.

- *Synchronisation type* — Select a synchronization type. *Normal* synchronizes both the local and the remote devices, *One-way from telephone* transfers data from the local to the remote device, and *One-way to telephone* transfers data from the remote to the local device. Press **Done** to return to the *Contents* page.



- 5 Press **Menu** to access the *Roaming* page, and define whether to change the connection automatically if the default connection fails, and which connection to use.



- 6 Press **Done** to return to the *Synchronisation* window.

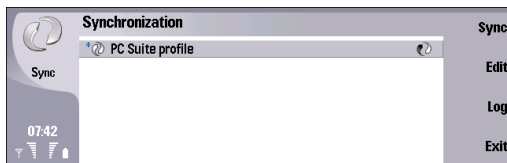
Other profile options

Other options in the *Synchronisation* application are as follows:

- To edit an existing profile, select the profile and press **Edit**; or press **Menu**, and select *File*→ *Edit*.
- To return to the default settings for PC Suite, press **Menu**, and select *Tools*→ *Reset PC Suite profile*.
- To set one of the existing synchronization profiles as the default profile, select the profile, then press **Menu**, and select *Tools*→ *Set as default*.
- To synchronize all database content between the device and the server, press **Menu**, and select *File*→ *Sync*→ *Slow sync*. Notice that this ignores the synchronization type set for a profile.
- To delete a profile, select the profile, and press the backspace key; or press **Menu**, and select *File*→ *Delete*.
- To delete the database from the server to replace it with the database from the device, press **Menu**, and select *File*→ *Sync*→ *Replace server data*.

Synchronizing data using Nokia 9500 Communicator

➡ Select **Desk**→**Tools**→**Sync**.



To synchronize data using Nokia 9500 Communicator, do the following:

- 1 Edit the synchronization profile to fit your needs. See "Editing a synchronization profile" on page 12. If you using a data cable, select **Tools**→**Control panel**→**Connections**→**Cable setup**, and make sure that the **Data cable mode** is either **PC Suite connection** or **IP pass. overr. PC Suite**. Note that you cannot use an IP passthrough connection simultaneously with a PC Suite connection.
- 2 Connect your device to a compatible PC. You can use a Bluetooth or a data cable connection. Note that you do not need to connect your device to a PC if you are synchronizing with a remote Internet server.
- 3 Press **Sync**.
If you use Bluetooth, the device searches for available devices for synchronization. To end the search, press

Stop. Press **Select** to select the device with which you want to synchronize.

If you use a data cable, synchronization starts automatically when a connection is established.

After you have synchronized your device with a computer, you can view the synchronization log. To open the synchronization log, select a profile and press **Log**.

The log shows, for example, the date and time of the transfer. If errors occur during the synchronization profile, a dialog screen automatically appears. Select **Show log** to view the log.

You may receive the synchronization settings as a smart message from your service provider.