

NOKIA 9500

Communicator



9237371

Issue 1 EN

Nokia and Nokia Connecting People are registered trademarks of Nokia Corporation

Nokia 9500 Communicator Using SettingsWizard

Legal Notice

Copyright © Nokia 2005. All rights reserved.

Reproduction, transfer, distribution or storage of part or all of the contents in this document in any form without the prior written permission of Nokia is prohibited. Nokia and Nokia Connecting People are registered trademarks of Nokia Corporation. Other product and company names mentioned herein may be trademarks or trade names of their respective owners.

Nokia operates a policy of continuous development. Nokia reserves the right to make changes and improvements to any of the products described in this document without prior notice.

Under no circumstances shall Nokia be responsible for any loss of data or income or any special, incidental, consequential or indirect damages howsoever caused.

The contents of this document are provided "as is". Except as required by applicable law, no warranties of any kind, either express or implied, including, but not limited to, the implied warranties of merchantability and fitness for a particular purpose, are made in relation to the accuracy, reliability or contents of this document. Nokia reserves the right to revise this document or withdraw it at any time without prior notice.

Contents

Introduction	4
Installing SettingsWizard	5
Running SettingsWizard	7
Updating SettingsWizard information	9

Introduction

SettingsWizard is an application built to help you configure Internet access points and e-mail settings in your device.

To use the settings, you may need to subscribe to the appropriate services from your network operator or Internet service provider.

You do not need to use the SettingsWizard application if you have already ordered the settings from your operator or service provider, or if the settings are included in your SIM card.



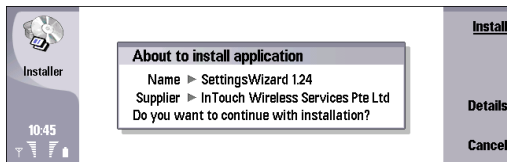
Note: The settings data is preloaded in SettingsWizard and may not include the latest settings of the network operators and service providers at the time of use. If any of the services are not working properly after successful configuration, contact your network operator or service provider.

Installing SettingsWizard

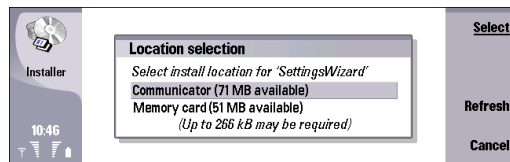
SettingsWizard is available on the Nokia site at www.nokia.com/support. Download SettingsWizard (SIS file) to a compatible PC and transfer it to your Nokia 9500 Communicator using a Bluetooth wireless technology, infrared, or data cable connection. For details on transferring data to your device, refer to the separate user guide of your Nokia 9500 Communicator. You can save the file to the device memory or the memory card on your Nokia 9500 Communicator.

To install SettingsWizard:

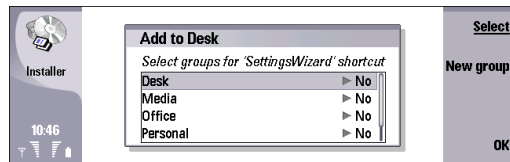
- 1 Go to the location where you saved the downloaded SettingsWizard file.
- 2 Select the file, and press **Open**.
- 3 Press **Install**.



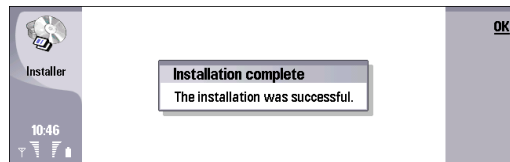
- 4 Select the installation location, and press **Select**.



- 5 Select the groups in which you want to include SettingsWizard, and press **OK**. To create a new group, press **New group**.



- 6 To close the installation wizard, press **OK**.



Once installed, you can find and run SettingsWizard from the groups in which you added it.

Running SettingsWizard

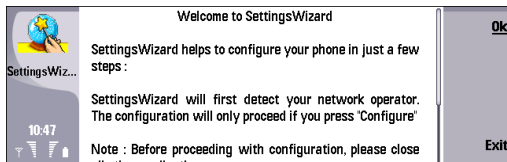
Because SettingsWizard configures settings for e-mail and Internet access, you should run the application before manually configuring any other browser or messaging settings.

To run SettingsWizard:

- 1 Go to the location where you installed SettingsWizard, select **SettingsWizard**, and press **Open**.

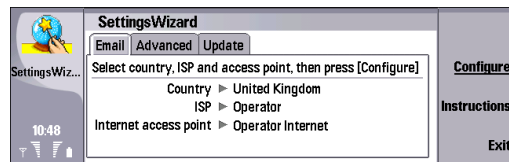


- 2 Press **Ok** to begin. SettingsWizard detects your network operator automatically by reading the details from your SIM card.

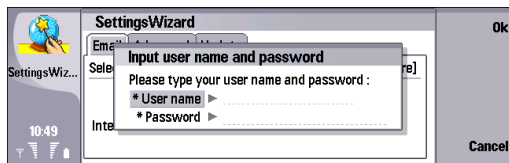


- 3 On the **Email** page, check that the detected settings are correct. If necessary, select the field with an incorrect value, and do the following:

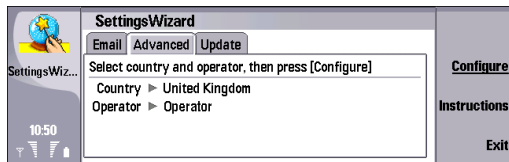
- **Country** — Press **Change** to open the country list. Scroll to the country where you access your e-mail, and press **OK**.
- **ISP** — Press **Change** to open the operator list. Scroll to your e-mail provider, and press **OK**.
- **Internet access point** — Press **Change** to open the Internet access point list. Scroll to the Internet access point you want to use, and press **OK**. If your country or operator is not listed, close SettingsWizard, and contact your network operator or Internet service provider for the settings. You may also be able to order the settings from the Nokia site at www.nokia.com/phonesettings.



- 4 On the **Email** page, press **Configure**, enter your e-mail user name and password, and press **Ok**.



- 5 To confirm the new e-mail settings, press **Ok**.
- 6 Press **Menu** to open the **Advanced** page, and check that the settings are correct. If necessary, select the field with an incorrect value, and do the following:
- **Country** – Press **Change** to open the country list. Scroll to your country, and press **OK**.
 - **Operator** – Press **Change** to open the operator list. Scroll to your operator, and press **OK**.



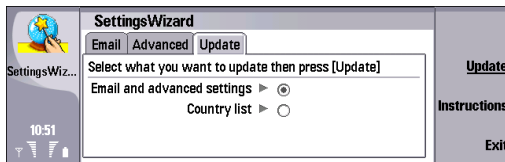
- 7 On the **Advanced** page, press **Configure**.
- 8 To confirm the settings, press **Ok**.
- 9 Some operators may require you to enter your user name and password before you can take the settings into use. If such a dialog is displayed, enter your user name and password, and press **Ok**.

Updating SettingsWizard information

To have the latest settings information, you may need to update SettingsWizard occasionally. Note that updating the settings information does not update your existing settings; it only updates the information in SettingsWizard.

To update SettingsWizard information:

- 1 Open [SettingsWizard](#).
- 2 Press **Menu** twice to open the [Update](#) page.

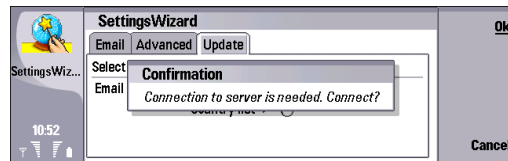


- 3 To update the e-mail and advanced settings, select [Email and advanced settings](#), and press [Update](#).
To update the country list, select [Country list](#), and press [Update](#).

- 4 If you selected to update e-mail and advanced settings, select your country from the list, and press [Ok](#).



- 5 To establish a connection, press [Ok](#).



- 6 If necessary, select the connection from the [Network connection](#) list, and press [Connect](#).
New settings are updated to your device. If no new settings are available, a notification is displayed.