

NOKIA 9500

Communicator



9235942

Issue 1 EN

Nokia and Nokia Connecting People are registered trademarks of Nokia Corporation

Nokia 9500 Communicator

Using your device as a modem

Legal Notice

Copyright © Nokia 2004. All rights reserved.

Reproduction, transfer, distribution or storage of part or all of the contents in this document in any form without the prior written permission of Nokia is prohibited. Nokia and Nokia Connecting People are registered trademarks of Nokia Corporation. Other product and company names mentioned herein may be trademarks or trade names of their respective owners.

Nokia operates a policy of continuous development. Nokia reserves the right to make changes and improvements to any of the products described in this document without prior notice.

Under no circumstances shall Nokia be responsible for any loss of data or income or any special, incidental, consequential or indirect damages howsoever caused.

The contents of this document are provided "as is". Except as required by applicable law, no warranties of any kind, either express or implied, including, but not limited to, the implied warranties of merchantability and fitness for a particular purpose, are made in relation to the accuracy, reliability or contents of this document. Nokia reserves the right to revise this document or withdraw it at any time without prior notice.

Copyright to the Windows screenshots belongs to Microsoft.

Contents

Introduction	4
Bluetooth connection	5
Pairing your computer and device	5
Installing your device as a modem using Bluetooth connectivity	6
Establishing a modem connection through Bluetooth technology	9
Data cable connection	12
Installing the cable modem	12
Establishing a connection with a data cable	12
Infrared connection	17
Activating the infrared modem	17
Establishing an infrared connection	17
Adjusting the connection speed	22
Troubleshooting	23
Bluetooth connections	23
Data cable connections	23
Infrared connections	24

Introduction

This document shows how you can install and use your Nokia 9500 Communicator as a modem through a Bluetooth, data cable, and infrared connection.

To use any of the connections described in this document, you need a valid account with a network operator or an Internet service provider.

Bluetooth connection

If your computer includes a compatible Bluetooth adapter, you can connect your Nokia 9500 Communicator to your computer through a Bluetooth connection and use your device as a modem through the Bluetooth connection.


Before you can use your device as a modem through the Bluetooth connection, you must install the correct modem driver (inf file) on your computer. Download the latest version from the Nokia site at www.nokia.com and copy the file to the inf folder of your Windows installation directory (for example, C:\WINNT\inf). If you have installed Nokia PC Suite on your computer, you do not need to download the modem driver separately, as it is included in Nokia PC Suite and copied automatically to the correct folder.

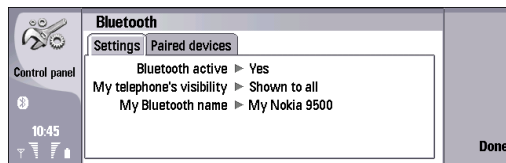
This document only describes one way of creating Bluetooth connections on the computer. Depending on the Bluetooth software installed on your computer, creating a Bluetooth connection from your computer to your Nokia 9500 Communicator may be different from the way described in this document.

Pairing your computer and device

Before your Nokia 9500 Communicator and your computer can communicate, they need to be paired with each other.

To pair your computer with your device:

- 1 Activate a Bluetooth connection on your computer. For details, refer to your Bluetooth connectivity documentation.
- 2 Activate a Bluetooth connection on your Nokia 9500 Communicator by pressing **Chr+** .
- 3 Make sure that your Nokia 9500 Communicator is visible to all other devices with Bluetooth connectivity:
 - Press **Desk**, and select **Tools**→ **Control panel**→ **Connections**→ **Bluetooth**.
 - On the **Settings** tab, check that the value of the **My telephone's visibility** field is **Shown to all**.

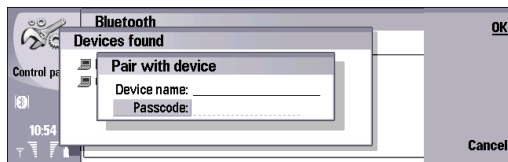


- 4 To open the **Paired devices** tab, press **Menu**.
- 5 Press **New**. The device searches for all available devices with Bluetooth connectivity and displays a list of found devices.

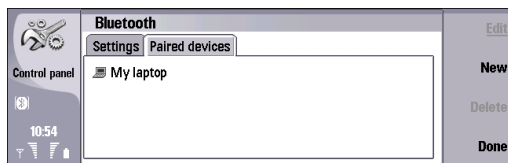
- 6 Select your computer from the *Devices found* list, and press **Pair**.



- 7 Enter a passcode that is used for all connections between the devices, and click **OK**.



- 8 When prompted, enter the same passcode on your computer.
- 9 Your devices are now paired and can communicate with each other using the shared passcode.



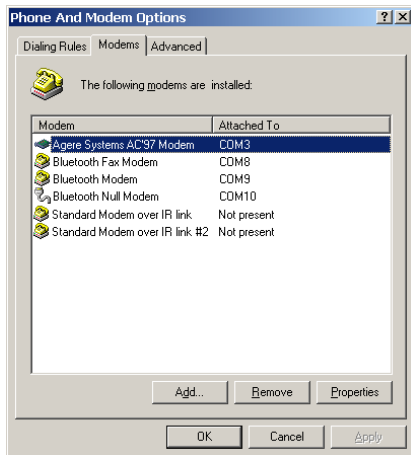
Installing your device as a modem using Bluetooth connectivity

Once your computer and device have been paired, you can install your Nokia 9500 Communicator as a modem. You can do this by using the Install a New Modem wizard in your Windows.

To install your device as a modem using Bluetooth connectivity:

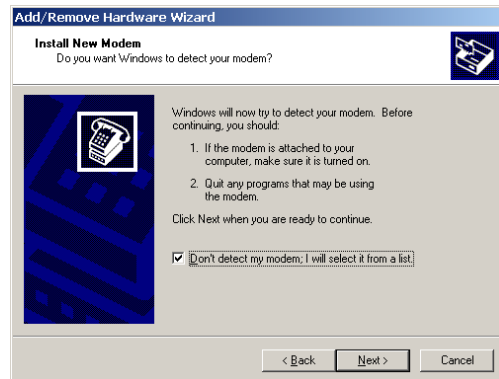
- 1 Activate a Bluetooth connection on your computer and on your Nokia 9500 Communicator.

- 2 On your computer, select **Start**→ **Settings**→ **Control Panel**, and double-click **Phone and Modem Options**.

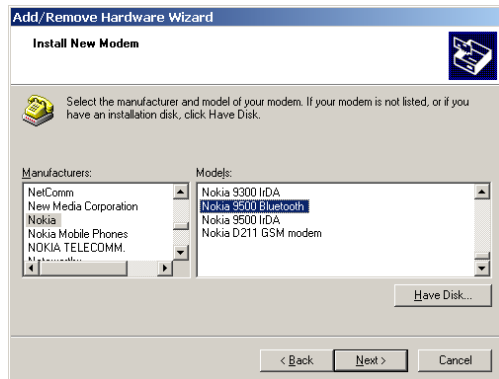


- 3 To start the Windows Install New Modem wizard, click **Add**.

- 4 Select the **Don't detect my modem; I will select it from a list** option, and click **Next**.

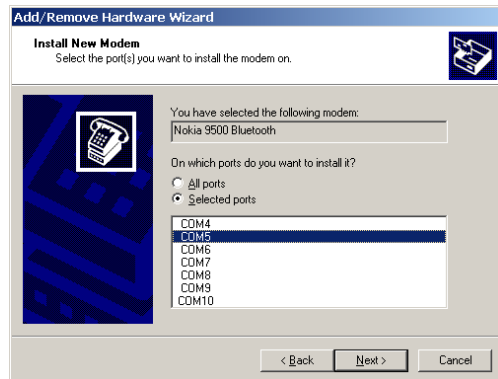


- 5 In the **Manufacturers** list, select **Nokia**, then select **Nokia 9500 Bluetooth**.

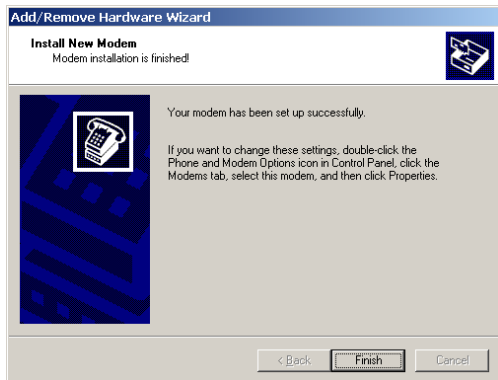


- 6 Click **Next**.
- 7 When prompted, accept the connection on your device by pressing **Accept**.

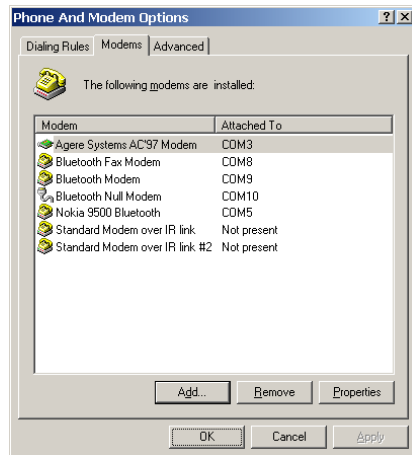
- 8 Select the port that you want to use for the Bluetooth modem connection, and click **Next**.



- 9 When Windows has finished installing the modem, click **Finish**.



- 10 A correctly installed modem is listed on the Windows Phone and Modem Options, **Modems** tab.

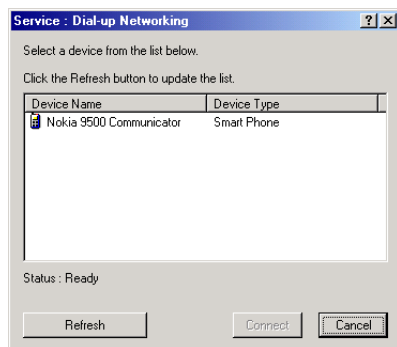


Establishing a modem connection through Bluetooth technology

Once you have installed your device as a modem using Bluetooth connectivity, you can establish a modem connection through a Bluetooth connection.

To establish a modem connection through a Bluetooth connection:

- 1 Activate a Bluetooth connection on your computer and on your Nokia 9500 Communicator. You do not need to create a connection between the devices.
- 2 On your computer, right-click the Bluetooth icon on the system tray, and select **Quick Connect**→**Dial-up Networking**→**Find Devices**.
- 3 In **Dial-Up Networking**, select your device from the list, and click **Connect**.

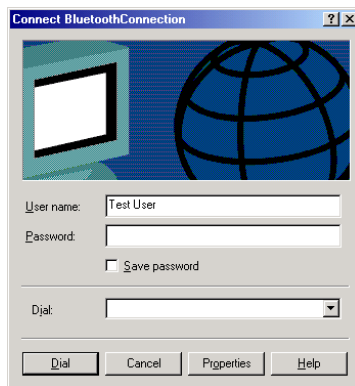


- 4 On your device, accept the connection when prompted by pressing **Accept**.



Tip: You can authorize connections between paired devices so that you are not prompted to accept a connection. Select the device from the **Paired devices** tab, press **Edit**, and change the value of the **Device authorised** field to **Yes**.

- 5 In **Connect BluetoothConnection**, enter your user name and password and the phone number received from your network operator or Internet service provider, and click **Dial**.



- 6 Wait for the connection to be established. Once the connection is established, you can use it as any other modem connection.

For consecutive connections, you can establish the connection from the **My Bluetooth Places** folder or from

the Bluetooth system tray icon **Quick Connect**→ **Dial-up Networking** menu. There is no need to pair the devices or install the modem again.

Data cable connection

When you connect your Nokia 9500 Communicator to a compatible PC with a DKU-2 data cable, you can use your device as a modem. Before you can use the data cable, you must install the Nokia Connectivity Cable driver on your computer. Download the latest version from the Nokia site at www.nokia.com and install the driver according to the installation instructions before you connect your computer and Nokia 9500 Communicator with a data cable.



Note: If you have installed Nokia PC Suite 6.4 on your computer, you do not need to install the Nokia Connectivity Cable driver, as it is installed with Nokia PC Suite 6.4. However, make sure you install Nokia PC Suite before you connect your computer and Nokia 9500 Communicator with a data cable.

Installing the cable modem

Once you have installed the Nokia Connectivity Cable driver, you can install your Nokia 9500 Communicator as a cable modem.

To install your device as a cable modem:

- 1 Connect your computer and your Nokia 9500 Communicator with a DKU-2 data cable. Windows locates the data cable driver automatically.

If the **Digital Signature Not Found** dialog is displayed during the process, click **Yes** to continue, and let Windows finish the installation.

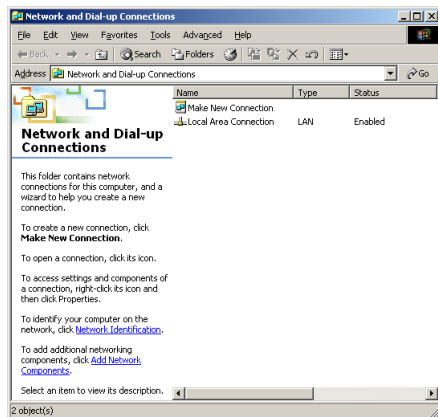
- 2 On your computer, select **Start**→**Settings**→**Control Panel**→**Phone and Modem Options**, and check that the **Modems** tab includes your device (**Nokia 9500 USB**).

Establishing a connection with a data cable

Once you have installed your device as a cable modem, you can establish a modem connection through the data cable.

To establish a modem connection through a data cable:

- 1 On your computer, select **Start**→**Settings**→**Network and Dial-up connections**.

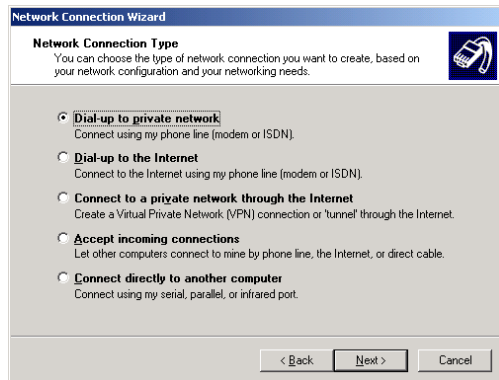


- 2 Double-click **Make New Connection**, and click **Next**.

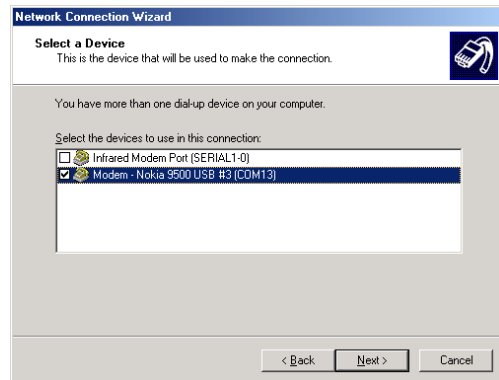


- 3 In **Network Connection Type**, select either **Dial-up to private network** or **Dial-up to the Internet**, and click

Next. For details on your connection type, contact your network operator or Internet service provider.

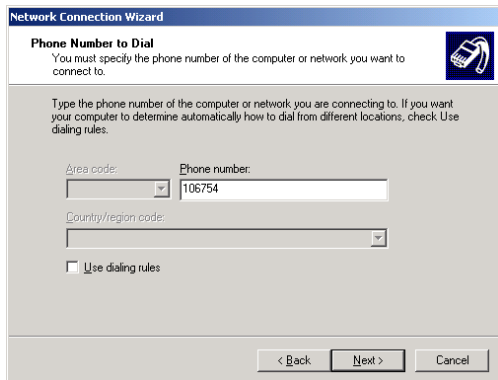


4 In **Select a Device**, select **Modem – Nokia 9500 USB**, and click **Next**.



5 In **Phone Number to Dial**, enter the phone number received from your network operator or Internet service provider, and click **Next**. For details on your

phone number, contact your network operator or Internet service provider.



Network Connection Wizard

Phone Number to Dial
You must specify the phone number of the computer or network you want to connect to.

Type the phone number of the computer or network you are connecting to. If you want your computer to determine automatically how to dial from different locations, check Use dialing rules.

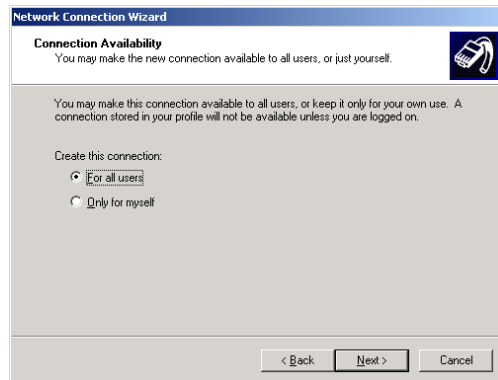
Area code: Phone number:

Country/region code:

☐ Use dialing rules

< Back Next > Cancel

6 In **Connection Availability**, select either **For all users** or **Only for myself**, and click **Next**.



Network Connection Wizard

Connection Availability
You may make the new connection available to all users, or just yourself.

You may make this connection available to all users, or keep it only for your own use. A connection stored in your profile will not be available unless you are logged on.

Create this connection:

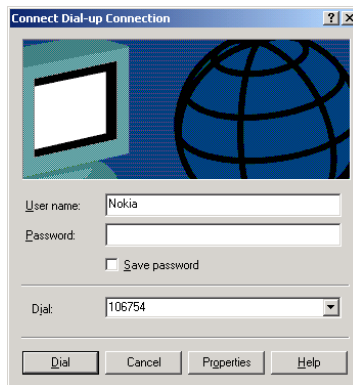
☒ For all users
☐ Only for myself

< Back Next > Cancel

- 7 Enter a name for the connection, and click **Finish**.



- 8 In **Connect Dial-up Connection**, enter your user name and password, and click **Dial** to establish a connection to your Internet service provider.



- 9 Wait for the connection to be established. Once the connection is established, you can use it as any other modem connection.


For consecutive connections, you can establish a connection by double-clicking the connection name in **Network and Dial-up connections**.

Infrared connection

If your computer includes an infrared port, you can use your device as a modem through an infrared connection.

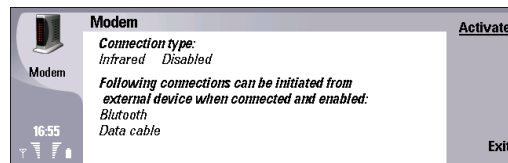
Before you can use your device as a modem through an infrared connection, you must install the correct modem driver (inf file) on your computer. Download the latest version from the Nokia site at www.nokia.com and copy the file to the inf folder of your Windows installation directory (for example, C:\WINNT\inf). If you have installed Nokia PC Suite on your computer, you do not need to download the modem driver separately, as it is included in Nokia PC Suite and copied automatically to the correct folder.

Activating the infrared modem

Activating infrared by pressing **Chr+**  starts an infrared connection that you can use to transfer files. To use infrared as a modem connection, you need to activate infrared as a modem on your Nokia 9500 Communicator.

To activate the infrared modem on your device:

- 1 Press **Desk**, and then select **Tools**→ **Modem**.



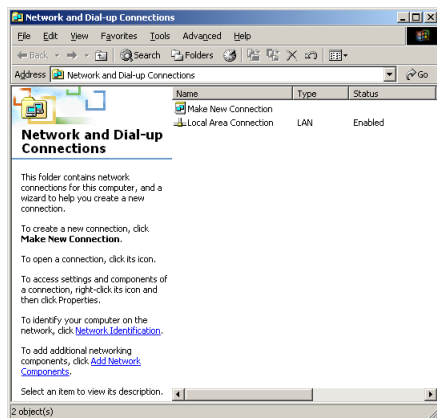
- 2 Press **Activate**. The infrared modem connection is now active, and you can install the modem on your computer.

Establishing an infrared connection

Once the infrared modem connection is active, you can install the infrared modem.

To install the infrared modem:

- 1 Select **Start**→**Settings**→**Network and Dial-up connections**.

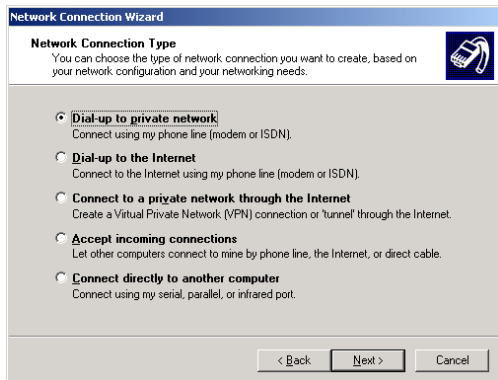


- 2 Double-click **Make New Connection**, and click **Next**.

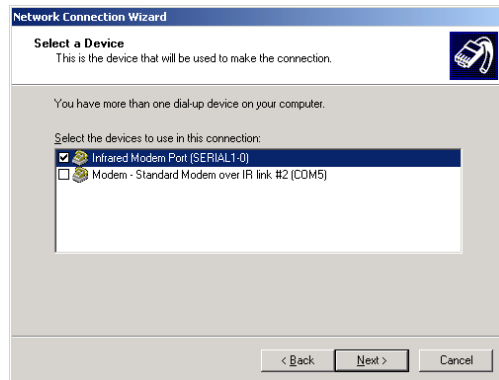


- 3 In **Network Connection Type**, select either **Dial-up to private network** or **Dial-up to the Internet**, and click

Next. For details on your connection type, contact your network operator or Internet service provider.

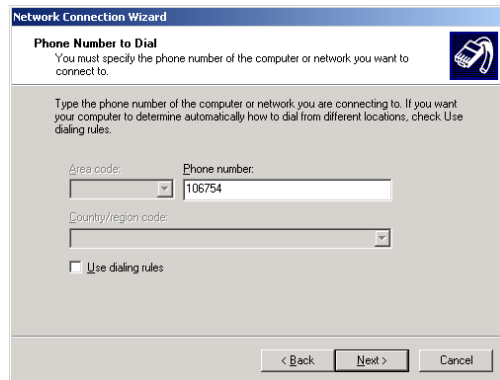


4 In **Select a Device**, select **Infrared Modem Port**, and click **Next**.



5 In **Phone Number to Dial**, enter the phone number received from your network operator or Internet service provider, and click **Next**. For details on your

phone number, contact your network operator or Internet service provider.



Network Connection Wizard

Phone Number to Dial

You must specify the phone number of the computer or network you want to connect to.

Type the phone number of the computer or network you are connecting to. If you want your computer to determine automatically how to dial from different locations, check Use dialing rules.

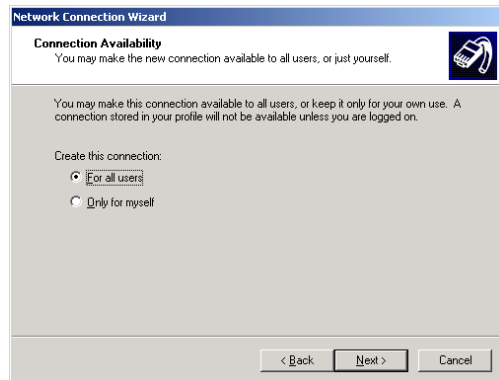
Area code: Phone number:

Country/region code:

☐ Use dialing rules

< Back Next > Cancel

6 In **Connection Availability**, select either **For all users** or **Only for myself**, and click **Next**.



Network Connection Wizard

Connection Availability

You may make the new connection available to all users, or just yourself.

You may make this connection available to all users, or keep it only for your own use. A connection stored in your profile will not be available unless you are logged on.

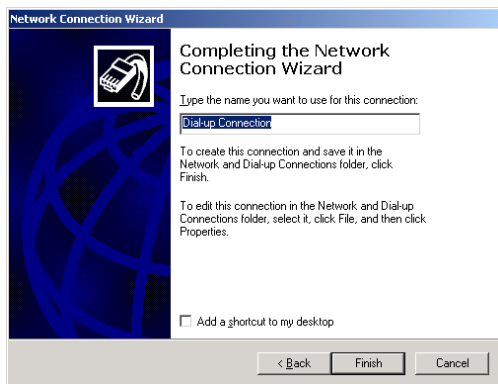
Create this connection:

☒ For all users

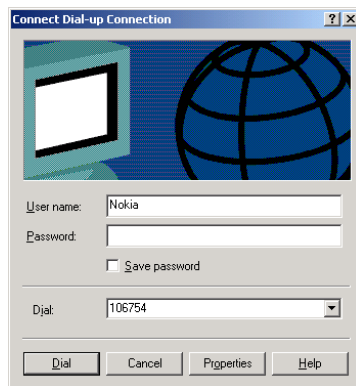
☐ Only for myself

< Back Next > Cancel

- 7 Enter a name for the connection, and click **Finish**.



- 8 In **Connect Dial-up Connection**, enter your user name and password, and click **Dial** to establish a connection to your Internet service provider.



- 9 Wait for the connection to be established. Once the connection is established, you can use it as any other modem connection.

For consecutive connections, you can establish a connection by double-clicking the connection name in **Start→Settings→Network and Dial-up connections**. Before you establish a connection, make sure that you activate the infrared modem on your device and that the infrared port of your device faces the infrared port of your computer.

Adjusting the connection speed

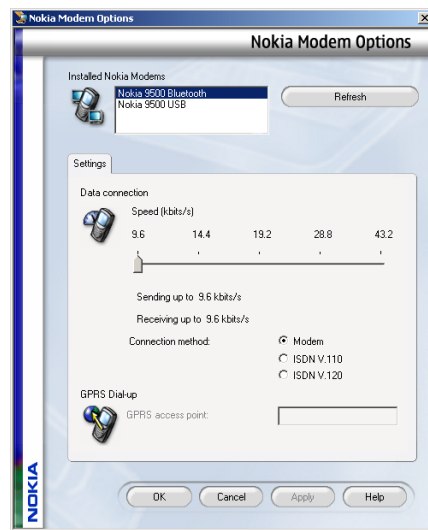
Nokia Modem Options software offers an easy way of adjusting the speed of your modem connection. Nokia Modem Options is included in Nokia PC Suite. You can download the latest version of Nokia PC Suite from the Nokia site at www.nokia.com.

Check available connection speeds from your network operator or Internet service provider.

To adjust the speed of a modem connection with Nokia Modem Options:

- 1 Make sure you have installed Nokia PC Suite on your computer.
- 2 On your computer, select **Start**→**Settings**→**Control Panel**→**Nokia Modem Options**.

- 3 From the **Installed Nokia Modems** list, select the modem connection the speed of which you want to adjust.



- 4 Drag the slider left or right to the desired speed, and click **Apply**.

Troubleshooting

For all connections, always check that your user name and password are correct, and make sure that the network signal is good.

Bluetooth connections

- Check that you have activated a Bluetooth connection in both devices.
- Check that Nokia 9500 Bluetooth is listed in Phone and Modem Options (**Start**→**Settings**→**Control Panel**→**Phone and Modem Options**). See "Installing your device as a modem using Bluetooth connectivity" on page 6.

If you are using Bluetooth wireless technology with Nokia PC Suite and a modem and experience problems, do the following:

- Check that you have paired your device and your computer.
- Activate Dial-up networking in your Bluetooth Neighbourhood by double-clicking the Dial-up networking icon.
- Reinstall the modem using Bluetooth connectivity. See "Installing your device as a modem using Bluetooth connectivity" on page 6.

If this does not work, disable Bluetooth connectivity from the Nokia PC Suite in the following way:

- Open Nokia PC Suite.
- Double-click **Manage connections**.
- In **Nokia Connection Manager**, clear the **Bluetooth** checkbox, and click **OK**.

Data cable connections

- Check that you are using a DKU-2 cable.
- Check that Nokia 9500 USB is listed in Phone and Modem Options (**Start**→**Settings**→**Control Panel**→**Phone and Modem Options**). See "Installing the cable modem" on page 12.
- Check that the value of the *Data cable mode* field is *PC Suite connection*. (Press **Desk**, and select **Tools**→**Control panel**→**Connections**→**Cable setup**.)

If you have connected your Nokia 9500 Communicator to your computer with a data cable before installing the Nokia Connectivity Cable driver, you may have to do the following:

- 1 Connect your device and computer with the data cable.
- 2 Select **Start**→**Settings**→**Control Panel**→**System**→**Hardware**→**Device Manager**.
- 3 Select your Nokia 9500 from **Other devices**, and select **Action**→**Uninstall**.

- 4 Unplug your device from your computer, and install the Nokia Connectivity Cable driver according to the instructions.

Infrared connections

- Check that you have activated the modem infrared connection on your device. See "Activating the infrared modem" on page 17.
- Check that the infrared ports of your computer and your device are face-to-face and that there are no obstacles blocking the connection.
- Check that the infrared port connection is enabled on your computer (**Start**→**Settings**→**Control Panel**→**System**→**Hardware**→**Device Manager**).
- Check that the infrared port connection is enabled in the BIOS settings of your computer.