



SUPPORT GUIDE FOR THE NOKIA BLUETOOTH ENABLED PHONES WITH COMPAQ IPAQ

NOKIA

Copyright © Nokia. All rights reserved | Date: 27.05.02, ver. 1.0





Contents

- 1. INTRODUCTION 1
- 2. ESTABLISHING BLUETOOTH CONNECTION BETWEEN DEVICES..... 1
- 3. MAKING A DIAL-UP CONNECTION..... 5

Copyright © Nokia. All rights reserved.

Reproduction, transfer, distribution or storage of part or all of the contents in this document in any form without the prior written permission of Nokia is prohibited.

Nokia and Nokia Connecting People are registered trademarks of Nokia Corporation. Other product and company names mentioned herein may be trademarks or tradenames of their respective owners.

Nokia operates a policy of continuous development. Nokia reserves the right to make changes and improvements to any of the products described in this document without prior notice.

Under no circumstances shall Nokia be responsible for any loss of data or income or any special, incidental, consequential or indirect damages howsoever caused.

The contents of this document are provided "as is". Except as required by applicable law, no warranties of any kind, either express or implied, including, but not limited to, the implied warranties of merchantability and fitness for a particular purpose, are made in relation to the accuracy, reliability or contents of this document. Nokia reserves the right to revise this document or withdraw it at any time without prior notice

The availability of particular products may vary by region. Please check with the Nokia dealer nearest to you.



1. INTRODUCTION

How to configure Compaq iPAQ H3870 or other iPAQ model with Bluetooth jacket to function with Nokia phone as a modem with it

- Compaq iPAQ device with BT capabilities and a Nokia Bluetooth enabled phone (I e Nokia 6310, Nokia 6310i or Nokia 7650) are the basic requirements
- Data services (at least outgoing data) should be activated in order to be able to make data calls
- Good GSM coverage and a well-charged battery in both devices as the data connection's power consumption is usually quite high.
- When you wish to use GPRS connection please verify from your operator that GPRS is activated on your SIM card and your SIM card supports GPRS
- When you are roaming in other GSM operator's network please verify that they have also GPRS roaming agreement

This Support Guide is made with Compaq iPAQ 3870 which has Microsoft Pocket PC Version 3.0.11171 (Build 11178) and Bluetooth Security Manager version 1.1

2. ESTABLISHING BLUETOOTH CONNECTION BETWEEN DEVICES

First set up your Compaq iPAQ device:

1. If you are using the Bluetooth expansion jacket install Bluetooth manager from the iPAQ CD via ActiveSync. Also check whether there is a later version of the driver available on the Compaq web site. If you have the H3870 the software is already installed into ROM.

2. Install "End user upgrade 1" (EUU 1). Download from Compaq web site. To determine whether the upgrade is installed check ActiveSync (in Compaq iPAQ go to Start – ActiveSync and click on the "Tools – Options..." in bottom left corner of the screen). There should be a server tab (Figure 1.).

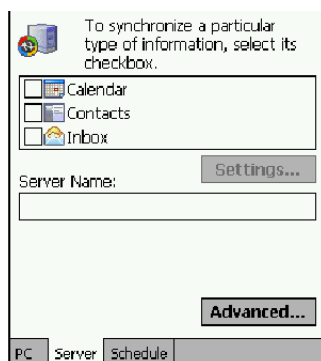


Figure 1.

2. Now go to Today screen (Start – Today)
2. Locate the Bluetooth icon on the bottom right corner of the screen (Figure 2.)



Figure 2.

2. If the Bluetooth icon is black as shown in figure 2 then the Bluetooth is off
 - .1. If the Bluetooth is off then tap on the Bluetooth icon to open the Bluetooth menu (Figure 3.) and select “Turn radio ON”
 - .2. Now the Bluetooth icon should be like in the figure 4.



Figure 3.



Figure 4.



Tip: If for some reason you can't access the Bluetooth menu or you can't turn the Bluetooth ON then you need to reset your Compaq iPAQ (Figure 5).



Figure 5. To reset your iPAQ you need to push the reset button with your stencil (marked red in the picture)

Now set up your Nokia phone for Bluetooth use according to User Manual. For example in Nokia 6310i

1. Bluetooth – Bluetooth settings - My phone's visibility –menu and check that it is set to “Shown to all” and
2. then name your phone (Bluetooth – Bluetooth settings - My phone's name –menu)
3. after setting name to your Nokia 6310i turn the Bluetooth on (Bluetooth menu's first menu item).

And in Nokia 7650

1. Browse to Menu – Connect / Bluetooth
2. Turn the Bluetooth on
3. My phone's visibility: Shown to all
4. My Bluetooth name: Nokia 7650 (just an example)

Now that both your Nokia phone and your Compaq iPAQ device have Bluetooth ON you need to create a bond between these two devices.

1. Go to Start – Bluetooth manager
2. Tap on “Search” (this is located in the bottom of the screen)
3. Now your iPAQ device will search for Bluetooth devices and list them on the screen (Figure 6.)

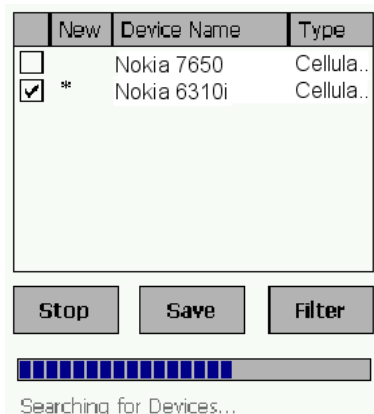


Figure 6. After all the devices have been found select the devices that you wish to bond with your iPAQ (tap I e on the Nokia 6310i tick box like in the picture). The star () means that the found device has not been bond with the iPAQ before.*

4. Select one of the devices from the list like in the figure 1. and tap on “Save”
5. Select group for your device and tap on “OK”
6. Now you should see the list of found devices again, just tap “OK” in the upper right corner of the screen (Figure 7.)



Figure 7.

7. Click on the phone icon corresponding to your device name in the Bluetooth manager.

8. Tap on the Actions menu and select “Create bond with this device” if this is your primary phone to be used with this iPAQ (Figure 8.). If you create the bond between these two devices you can set in your phone’s Bluetooth settings that the phone’s visibility is “Hidden” (this is a security precaution).
 - 9.1. If you use this phone only temporarily you can select “Set as Bluetooth Dialup Modem” after this there should be “Set as Bluetooth Dialup Modem OK” -text on the screen.
 - 9.2. If you selected “Create bond with this device” you will be prompted for a PIN code (Figure 9.)

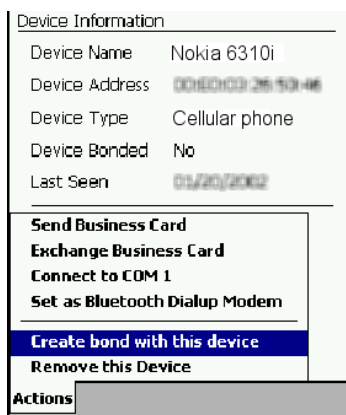


Figure 8.

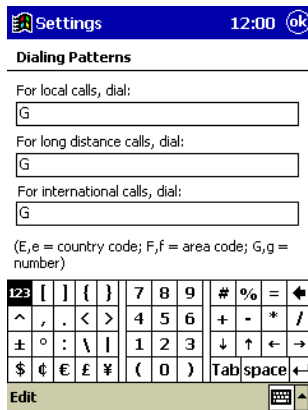


Figure 9. Enter PIN code (can be whatever I e “1234”). Please note that the same PIN Code should be entered also to phone.

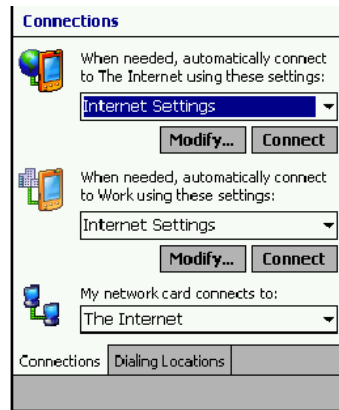
9. With some devices you may need to make the connection in maximum 5 seconds. You should see a text “Bond successfully created” in the bottom of the screen on the iPAQ. If you got disconnected from the iPAQ during the bonding process you need to reset the iPAQ (See Figure 5. in the Tip box on page 2) and start over.
 - 9.1. On the iPAQ press ok
 - 9.2. When you get the “pair with XXXX”
 - 9.3. on your Nokia 6310 press “Accept” on your phone
 - 9.4. Enter the same PIN code as you entered to iPAQ
 - 9.5. Press OK
 - 9.6. “Bond successfully created” should appear on your iPAQ.
 - 9.6.1. If you get message “Unable to exchange passkeys” on the iPAQ screen then go to your phone’s Bluetooth – View paired devices menu and delete pairing to your Compaq iPAQ and try again.
10. Select from Actions menu “Set as Bluetooth Dialup Modem” (Figure 8.) after this there should be “Set as Bluetooth Dialup Modem OK” -text on the screen.
11. Tap “OK” in the upper right corner of the screen.

3. MAKING A DIAL-UP CONNECTION

1. Go in your iPAQ to Start – Settings and
2. tap on the “Connections” tab on the bottom of the screen
3. tap on the “Connections” icon
4. tap on the “Dialing Locations” tab on the bottom of the screen
5. tap on the “Dialing Patterns...” button
6. Set G as dialing pattern on all three areas (Figure 10). Press OK
7. Go back to Connections tab. Press on the drop down list and choose “Internet settings” then tap on “Modify...” (Figure 11).



Figure



10.

8. Choose “New...” and name the connection. Select “Bluetooth Dialup Modem” from the drop down list (Figure 12.)
9. Tap on the “Advanced...” button (Figure 13.) to verify the connection preferences. After that tap on the “OK” on the top right corner of the screen.

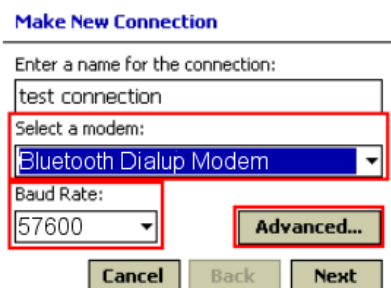


Figure 12.

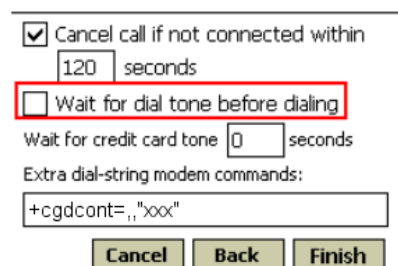
10. Tap “Next” button and enter the phone number

10.1. For GPRS connection type *99# as phone number (please verify from your GPRS service provider) without area code or country code. And for normal modem connection enter your Internet Service Provider's phone number. Tap "Next"

11. Uncheck the "Wait for dial tone before dialing" and

12. then enter Access Point Name, if you are making a GPRS connection, either to your phone (refer to User's Guide) or to "Extra dial-string modem commands":
+cgdcont=,"xxx" (NOTE! xxx refers to Access Point Name which you will get from your GSM operator) (Figure 14.). If you are making a normal modem connection or HSCSD connection then see the Tip box for further information.

13. tap "Finish" and then tap "OK" on the top right corner of the iPAQ screen.



☒ Cancel call if not connected within
120 seconds
☐ Wait for dial tone before dialing
Wait for credit card tone 0 seconds
Extra dial-string modem commands:
+cgdcont=,"xxx"
Cancel Back Finish

Figure 14.



Tip: If you wish to make a HSCSD connection then type the following dial-string in to the Extra dial-string... box:

Extra dial-string modem commands:

+cbst=16,0,1;+chsn=4,3,0,4 (to get 28.8 Kbps modem connection)

+cbst=81,0,1;+chsn=6,3,0,8 (to get 38.4 Kbps ISDN v.110 connection)

+cbst=50,0,1;+chsn=6,3,0,8 (to get 43.2 Kbps ISDN v.120 connection)

** If you wish to make a GPRS connection then put Access point name either to your phone or put the following AT command to Extra dial-string...box:*

+cgdcont=,"xxx" (NOTE! xxx refers to Access Point Name which you will get from your GSM operator)

14. Tap "Connect"

15. If you are making a GPRS connection you can usually leave the username, password and domain fields empty (Please verify from your GPRS service provider). If you are making a normal modem connection to your ISP you usually need to enter your username and password fields.

16. On the Nokia 6310 you will get "Connect with XXXX" press "Accept" on the phone and enter the passcode if requested (I e "1234")

17. Enter the same passcode to iPAQ and tap on “Accept” and you should get “Paired with...” on the phone screen.
18. After a second the GPRS session starts or if making a dial-up connection the phone starts to dial.
19. When the message “connected” appears, you are on-line.
20. Now start I e the Internet Explorer from the Start menu.
21. To end the session, click the two arrows on the top of the iPAQ screen and tap End (Figure 15).

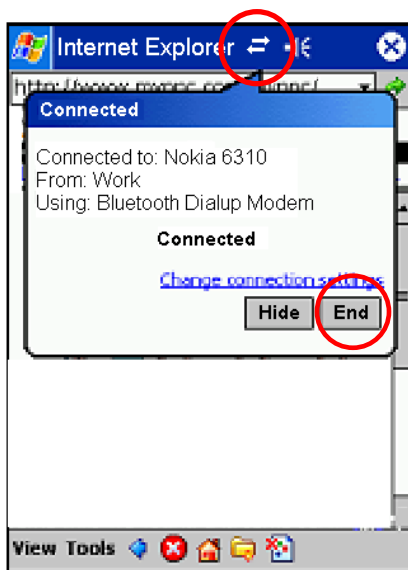


Figure 15.