



Quick Guide For Using The parallel printing adapter

PARALLEL PRINTING ADAPTER FOR NOKIA 9110 COMMUNICATOR

An adapter for parallel printing with the Nokia 9110 Communicator is available from Greenwich Instruments Ltd, model GA935-N. See the Solutions Guide supplied with your communicator for more information, or check the following web page: <http://www.greenwichinst.com>

1. Install the correct printer driver to Nokia 9110 Communicator.

The following drivers are pre-loaded to the Nokia 9110 Communicator

Hewlett Packard Laserjet 5P	(postscript printer)
Hewlett Packard Laserjet 5MP	(PCL printer)
Hewlett Packard Laserjet 6P	(postscript printer)
Hewlett Packard Laserjet 6MP	(PCL printer)

The CD-ROM and floppy diskette supplied with the communicator contain extra drivers.

Canon BJC-50/70/80	(Set BJC-70 printer to LQ mode – see manual)
Citizen PN60i	
HP Deskjet 340	
Ascii driver	

Printers generally have an emulation mode. Read the documentation supplied with your printer about emulation modes, and decide which driver is most suitable.

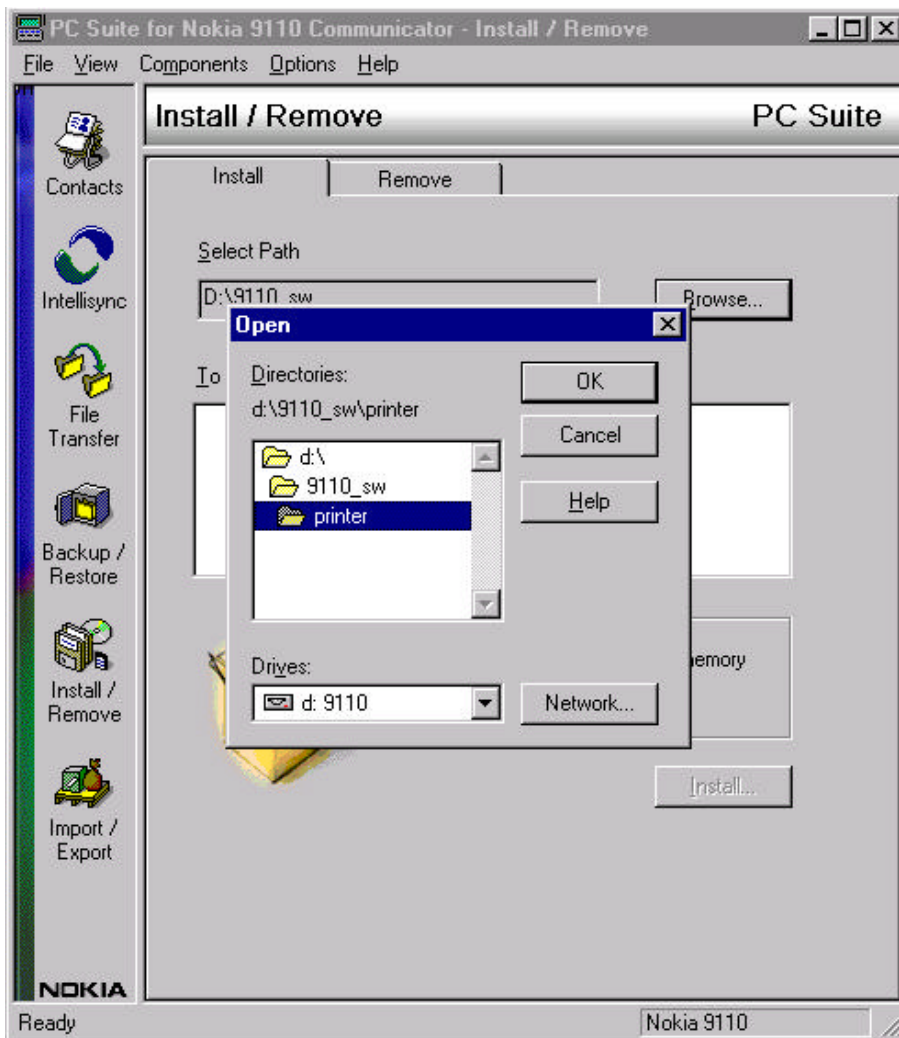
<i>Postscript emulation</i>	try HP Laserjet 5P and Laserjet 6P
<i>Printer Control Language PCL</i>	try HP Laserjet 5MP and Laserjet 6MP
<i>Epson emulation</i>	try Citizen PN60i or Canon BJC-70
<i>Later Deskjet printer</i>	try to print using HP Deskjet 340 driver.

The Ascii driver will print text only to most printer models (text formatting in documents will not appear, and fax printing is not possible).

Now proceed to install driver(s).

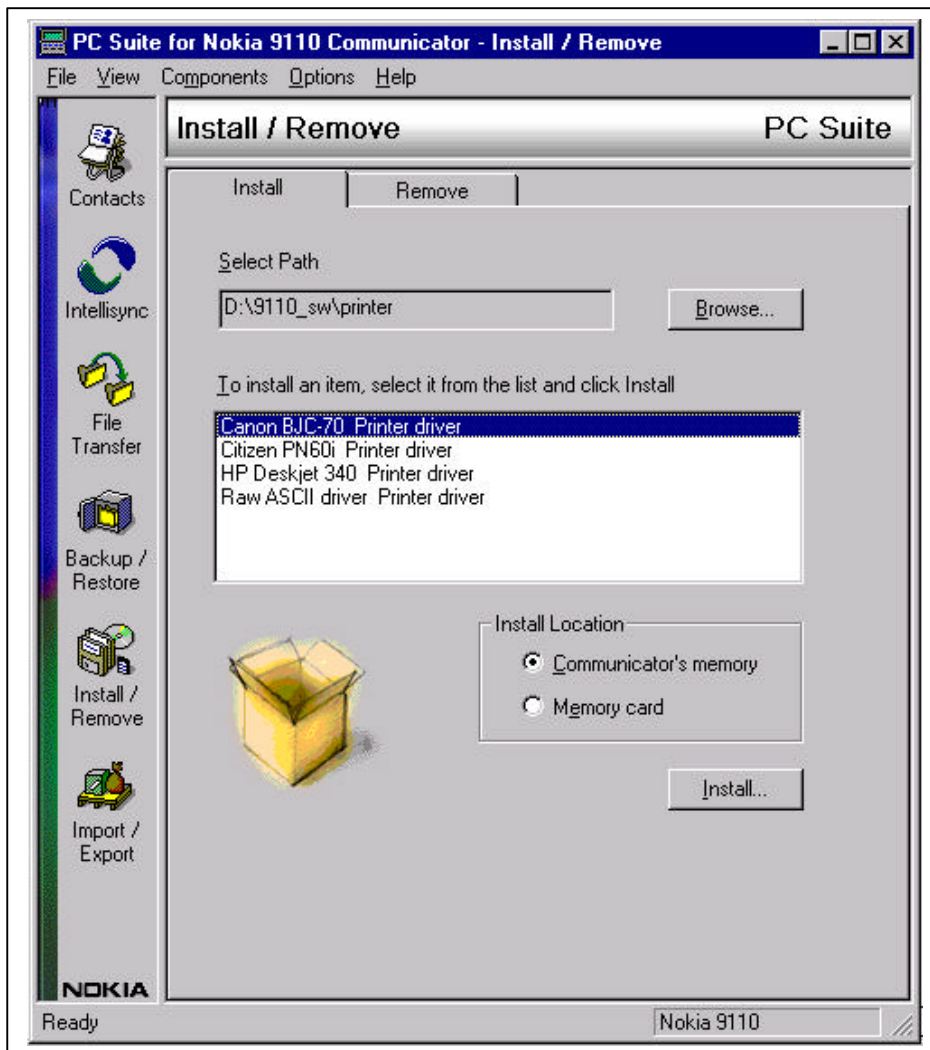
To install an extra printer driver

1. start PC Suite software supplied with Nokia 9110 Communicator.
2. connect the communicator via cable, infrared or deskstand DCH-7 accessory to your PC
3. after the communicator has connected, press the Install/Remove icon, and then Browse the CD-ROM and locate **d:\9110_sw\printer**, or Browse the floppy diskette.



4. Click OK

Now select the preferred driver with a single mouse click (in this example Canon BJC-70).

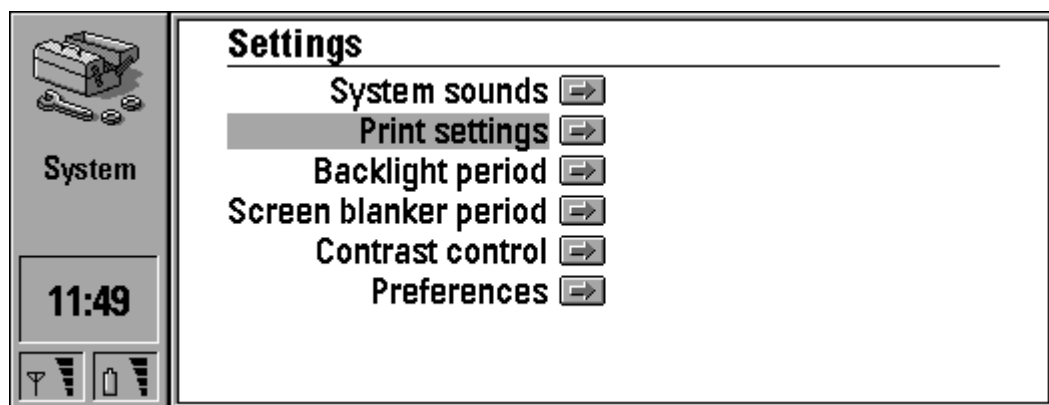


Click install and wait until the Operation In Progress dialogue box is finished. Install other drivers as needed. Then disconnect the Nokia 9110 Communicator from your PC.

Note: You may also install drivers to the communicator using Nokia Server software.

2. Correct settings for the Nokia 9110 Communicator

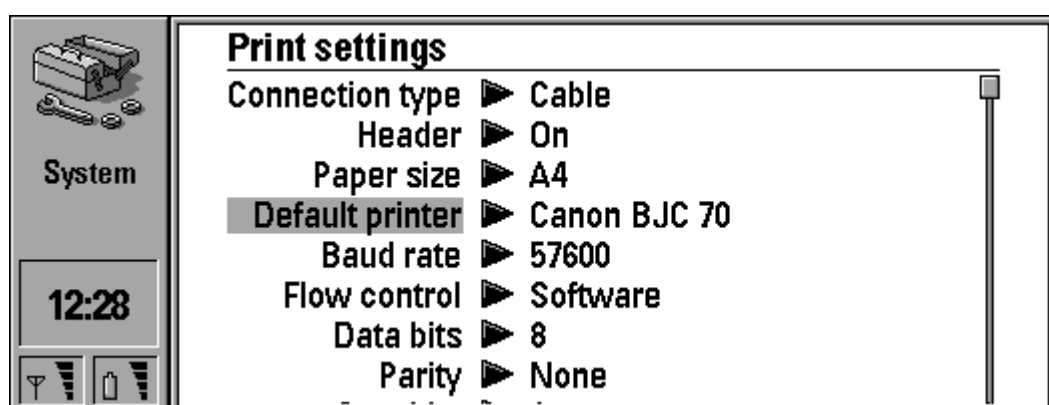
The Nokia 9110 Communicator printing connection type must be set to Cable. From **System** application, select **Settings**, then change **Print settings**



Change

Close

Change **Connection type** to **Cable**.



Change

Close

Check the following settings then close.

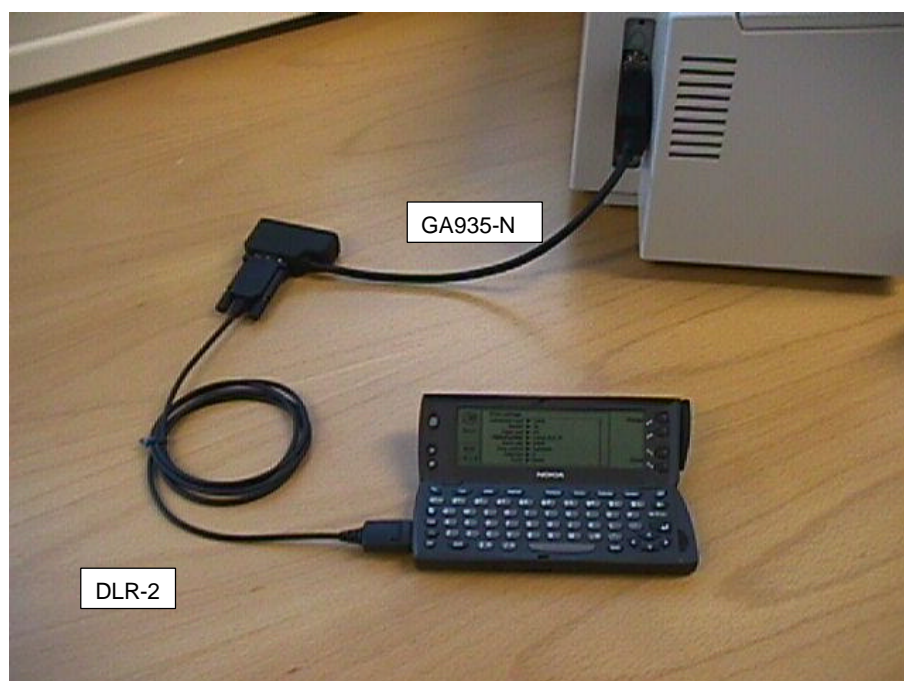
Connection type	Cable
Baud rate	57600
Flow control	Software
Data bits	8
Parity	None
Stop bits	1

In this example we select the Canon BJC 70 driver.

3. Printing from Nokia 9110 Communicator

To make your first test print, select **Notes** application and write a note with a few words. Ensure that a battery is connected correctly inside GA935-N – check the instructions supplied with GA935-N. Replace the battery if flat.

1. check the printer is on-line, and that paper is loaded. Connect GA935-N to your printer Centronics port, and cable DLR-2 supplied with your communicator to GA935-N.



2. with the note still open, press the **Menu** button at the top left of your communicator display.
3. select the **Print** option from the menu on the communicator

<p>Own texts\Note</p> <p>My first print!</p>	<p>Menu</p> <hr/> <p>Undo (Ctrl-Z)</p> <p>Print</p> <p>Select</p> <p>Cancel</p>
---	---

4. if needed select **Printers** option and **Select** a different driver. Press **Start** to begin printing

You need only repeat these steps to print now that the communicator is configured.

Legal Notice

The contents of this document are copyright © 1995 – 1999 Nokia. All rights reserved.

Reproduction, transfer, distribution or storage of part or all of the contents in any form without the prior written permission of Nokia is prohibited.

Nokia is a registered trademark of Nokia Corporation. Nokia's product names are either trademarks or registered trademarks of Nokia. Other product and company names mentioned herein may be trademarks of their respective owners.

The contents of this document is provided "as is". Except as required by the applicable law, no warranty of any kind, either express or implied, is made in relation to the accuracy, reliability or content of the document. Nokia reserves the right to revise the document or withdraw it at any time without prior notice.

Nokia is not responsible for any lost of data, income or any consequential damage howsoever caused.