



This Quick Guide is a generic guide for both Nokia Card Phones (1.0 and 2.0). When you are asked to select the modem you will see **Nokia ******, please select one of the following:

Nokia Card Phone 1.0	Nokia Cellular Card Phone
Nokia Card Phone 2.0	Nokia Card Phone 2.0

Quick Guide to Using the Nokia Card Phone with a 16-bit Communication Application

This Quick Guide assumes that the Nokia Card Phone is already installed in your computer.

1. Installing and setting up

To find out which port the Nokia Card Phone is using, open the Win95/98 Device Manager (**Start ->Settings ->Control Panel ->System ->Device Manager**) and look at the Ports (Com&LPT) entries. (You might have to double-click on Ports (Com&LPT) to see all the ports.) Specify the Nokia xxxx Port in your communication application (Figure 1). In this example it is connected to COM3 (the setup program shows this port). Please note that you may have to change the COM port that your Nokia Card Phone uses by default because you can use only COM ports 1-4 in your 16-bit applications.

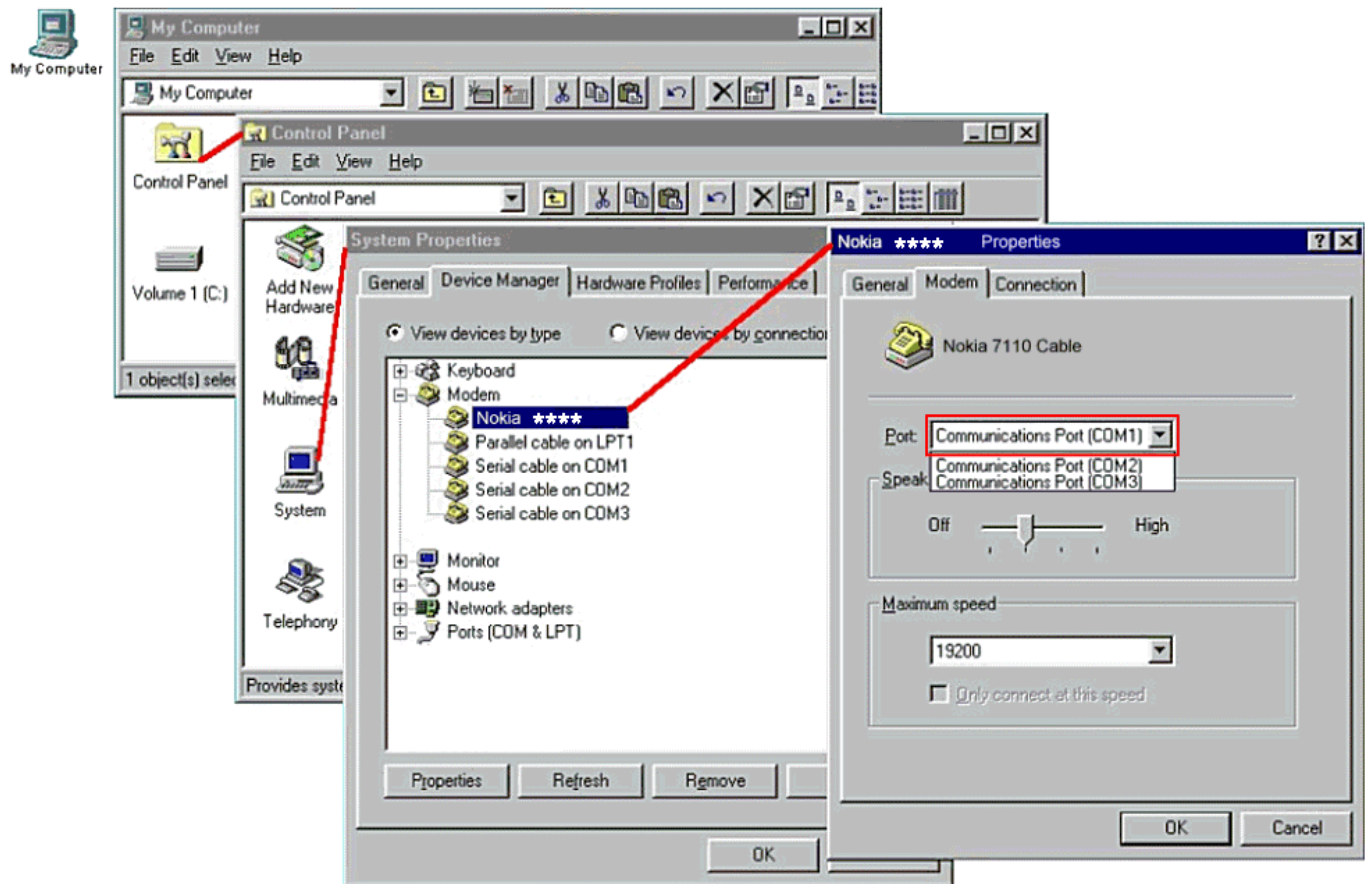


Figure 1. Serial port setup.

LEGAL NOTICE

Copyright © Nokia Mobile Phones 2000. All rights reserved.

Reproduction, transfer, distribution or storage of part or all of the contents of this document in any form without the prior written permission of Nokia is prohibited.

Nokia and Nokia Connecting People are registered trademarks of the Nokia Corporation. Other product and company names mentioned herein may be trademarks or tradenames of their respective owners.

Nokia operates a policy of continuous development. Therefore, we reserve the right to make changes and improvements to any of the products described in this document without prior notice.

Under no circumstances shall Nokia be responsible for any loss of data or income or any special, incidental, consequential or indirect damage howsoever caused.

The contents of this document are provided "as is". Except as required by the applicable law, no warranties of any kind, either express or implied, including, but not limited to, the implied warranties of merchantability and fitness for a particular purpose, are made in relation to the accuracy, reliability or contents of this document. Nokia reserves the right to revise this document or to withdraw it at any time without prior notice.