



This Quick Guide is a generic guide for both Nokia Card Phones (1.0 and 2.0). When you are asked to select the modem you will see *Nokia *****, please select one of the following:

Nokia Card Phone 1.0

Nokia Cellular Card Phone

Nokia Card Phone 2.0

Nokia Card Phone 2.0

Quick Guide to Using the Nokia Card Phone with Dial-Up Networking

1. Installing and setting up

First you have to create a new connection for the Nokia Card Phone. Choose **My computer** → **Dial-up networking** → **Make New Connection**. This opens a Window where you can choose the right modem and name the connection (Figure 1).

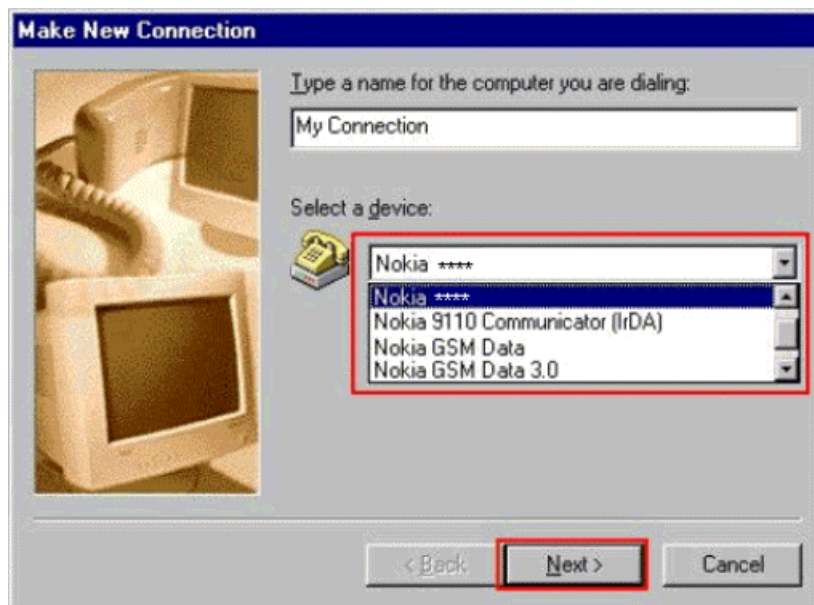


Figure 1. Making a new connection.

Enter a name for the connection and choose 'Nokia xxxx', click **Next>** and enter the correct number that you have obtained from your provider, also choose the correct area and country codes (Figure 2). Choose **Next>** to proceed.

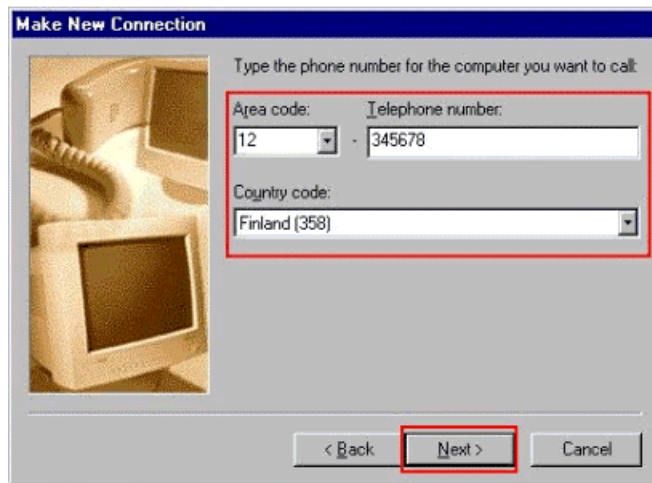


Figure 2. Enter the number and codes.

Choosing the **Finish** button will close the setup and create an icon for the dial-up networking folder (Figure 3).

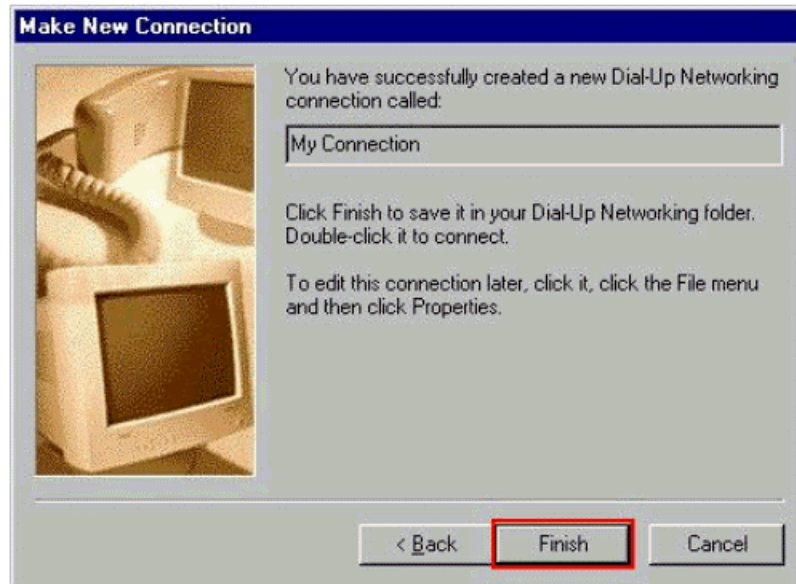


Figure 3. Finishing the creation of a new connection.

Click the newly created icon with the right button of the mouse and choose Properties. This will open a general information leaflet for this connection (Figure 4). (**NOTE:** If you are going to connect to an ISDN number you must add the following line to the extra settings: S35=0. This can be done by choosing **Configure... → Connection → Advanced... → Extra settings**). If you want to change this connection to a "normal" line please take note of this.

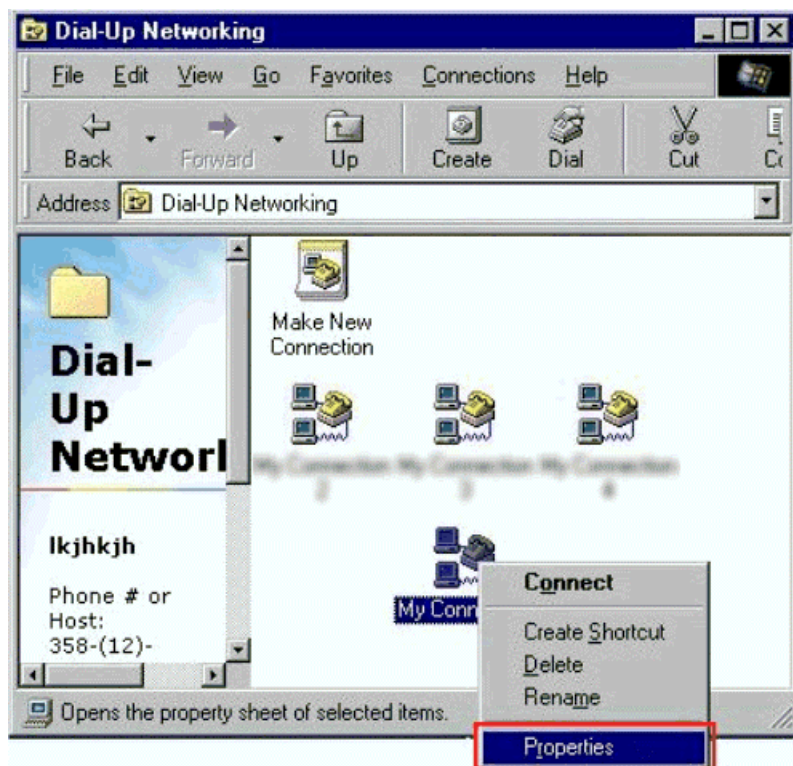


Figure 4. General settings.

Under the **Server Type...** tab (Figure 5).

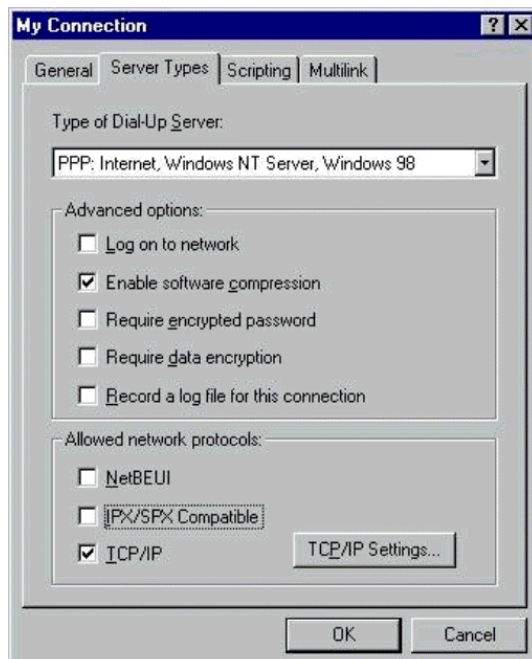


Figure 5. Server types.

...choose the **TCP/IP Settings...** button; you must then select all the settings that you have received from your service provider. When you have selected all the necessary settings, close this window by choosing the OK button.

1.1 Making a connection



Double-click the icon that you have just created. Add the username and password information (you will get these from your service provider). When you open this connection you can choose to save the password for the next time (so that you do not have to retype it). Start to establish the connection by clicking **Connect** (Figure 6).

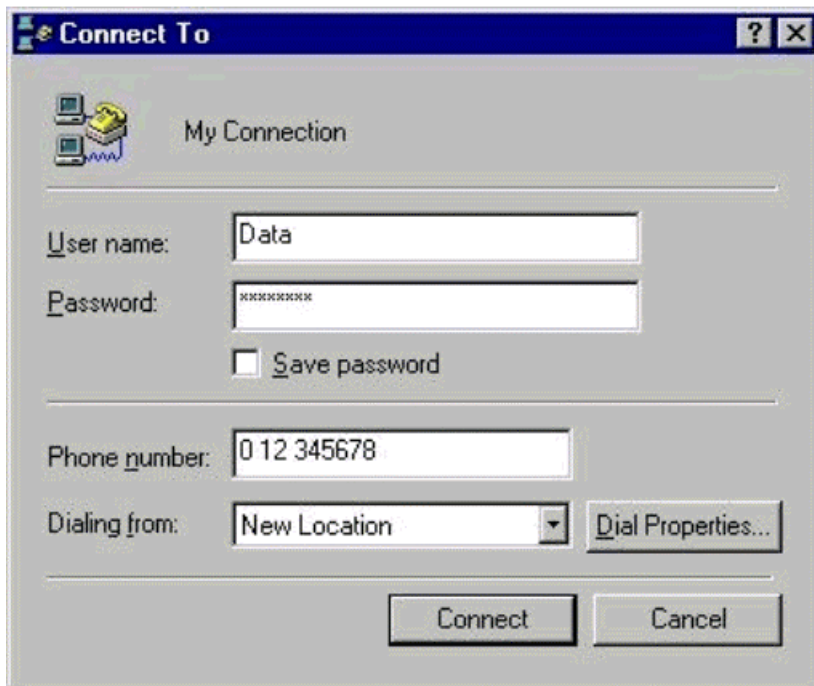


Figure 6. Connect to...

When you have clicked the **Connect** button, the computer should start to dial the number that you have specified in the set-up for your Internet service provider (Figures 8-10).



Figure 8-10. Making a connection...

When the connection is established a modem icon will appear in your taskbar (with two flashing red/green dots in it) and it is then possible to open, for example, Netscape or Internet Explorer to browse the Internet.

**LEGAL NOTICE**

Copyright © Nokia Mobile Phones 2000. All rights reserved.

Reproduction, transfer, distribution or storage of part or all of the contents of this document in any form without the prior written permission of Nokia is prohibited.

Nokia and Nokia Connecting People are registered trademarks of the Nokia Corporation. Other product and company names mentioned herein may be trademarks or tradenames of their respective owners.

Nokia operates a policy of continuous development. Therefore, we reserve the right to make changes and improvements to any of the products described in this document without prior notice.

Under no circumstances shall Nokia be responsible for any loss of data or income or any special, incidental, consequential or indirect damage howsoever caused.

The contents of this document are provided "as is". Except as required by the applicable law, no warranties of any kind, either express or implied, including, but not limited to, the implied warranties of merchantability and fitness for a particular purpose, are made in relation to the accuracy, reliability or contents of this document. Nokia reserves the right to revise this document or to withdraw it at any time without prior notice.