

---

# Nokia Card Phone 2.0

## Installation Guide

---

Copyright © Nokia Mobile Phones 2000. All rights reserved.

Reproduction, transfer, distribution or storage of part or all of the contents in this document in any form without the prior written permission of Nokia is prohibited.

Nokia and Nokia Connecting People are registered trademarks of Nokia Corporation. Other product and company names mentioned herein may be trademarks or tradenames of their respective owners.

Nokia operates a policy of continuous development. Nokia reserves the right to make changes and improvements to any of the products described in this document without prior notice.

Under no circumstances shall Nokia be responsible for any loss of data or income or any special, incidental, consequential or indirect damages howsoever caused.

The contents of this document are provided "as is". Except as required by applicable law, no warranties of any kind, either express or implied, including, but not limited to, the implied warranties of merchantability and fitness for a particular purpose, are made in relation to the accuracy, reliability or contents of this document. Nokia reserves the right to revise this document or withdraw it at any time without prior notice.

The availability of particular accessories may vary by region. Please check with the Nokia dealer nearest to you. Please dispose of batteries properly.

# Contents

<b>For your safety</b> .....	<b>1</b>
<b>Introduction</b> .....	<b>3</b>
Contents of the sales package .....	3
System requirements .....	3
Network services .....	4
Communications software .....	4
<b>Installation</b> .....	<b>5</b>
First installation steps .....	5
Phone Power-up Warning .....	5
Additional windows (Windows 95/98 only) .....	6
Software Licence Agreement .....	6
Setup Type.....	6
Start Copying Files.....	7
User Information .....	7
Card Phone Driver Settings (Windows NT only) .....	7
Insert Nokia Card Phone 2.0 .....	7
Driver Installation Check (Windows 95/98 and Windows 2000) .....	8
Setup Complete .....	8
<b>Modifying the Nokia Card Phone Setup</b> .....	<b>9</b>
<b>Getting started</b> .....	<b>10</b>
Starting the Nokia Card Phone .....	10
Using the Nokia Card Phone .....	10
Text messages.....	10
Voice calls .....	11
Data and fax communication .....	11
High Speed Circuit Switched Data (HSCSD).....	11
Dual-band Functionality .....	12
Electrostatic Discharge (ESD) .....	12
<b>Charge in computer batteries</b> .....	<b>12</b>
<b>Signal strength affecting cellular transmissions</b> .....	<b>13</b>
<b>Accessories</b> .....	<b>13</b>
Headset .....	13
External antenna cable .....	14
<b>Troubleshooting</b> .....	<b>15</b>
<b>Important safety information</b> .....	<b>18</b>
<b>Care and maintenance</b> .....	<b>22</b>

# For your safety

Read these simple guidelines. Breaking the rules may be dangerous or illegal. Further detailed information is given in this manual.



## ROAD SAFETY COMES FIRST

Do not use the Nokia Card Phone while driving; park the vehicle first.



## INTERFERENCE

All wireless phones may get interference which could affect performance.



## DO NOT USE IN HOSPITALS

Follow any regulations or rules. Do not use near medical equipment.



## DO NOT USE IN AIRCRAFT

Wireless phones can cause interference. Using them on aircraft is illegal.



## DO NOT USE WHEN REFUELLING

Do not use the phone at a refuelling point. Do not use near fuel or chemicals.



## DO NOT USE NEAR BLASTING

Do not use phone where blasting is in progress. Observe restrictions, and follow any regulations or rules.



## USE SENSIBLY

Do not touch the antenna unnecessarily.



## USE QUALIFIED SERVICE

Only qualified service personnel must install or repair equipment.



## ACCESSORIES

Use only approved accessories. Do not connect incompatible products.

## 2 For your safety

---



### EMERGENCY CALLS

**NOTE:** Voice calls, including emergency calls, can **ONLY** be made using a compatible Nokia headset.

To make an emergency call:

1. Make sure that the Nokia Card Phone is properly inserted in the PC Card slot and that the headset is connected to the card phone. Some networks may require that a valid SIM card is inserted in the phone.
2. Open the Dialler application by selecting the **Go** menu, **Dialler** command.
3. In the Dialler tab, key in the emergency number for your present location (e.g. 112 or some other official emergency number). Emergency numbers vary by location.
4. Press Enter.



### MAKE BACKUP COPIES

Remember to make backup copies of all important data.



### CONNECTING TO OTHER DEVICES

When connecting to any other device, read its user's guide for detailed safety instructions. Do not connect incompatible products.

# Introduction

Congratulations on your purchase of the Nokia Card Phone! The Nokia Card Phone is a dual-band GSM phone and modem in the form of a PC Card. It plugs into compatible portable computers or other devices with a PC Card type II or III slot.

The Nokia Card Phone offers full data and voice functionality: you can send and receive e-mail, data files, faxes and text messages, access the Internet and make voice calls from your PC. With the Windows-based user interface, you can easily write and send text messages, organise contact information and manage phone calls.

The Nokia Card Phone supports High Speed Circuit Switched Data (HSCSD) which enables higher data transmission rates, making the downloading of large files faster and more convenient.

This guide describes how to install the Nokia Card Phone software on your PC and how to start using it. For more detailed information, consult the Nokia Card Phone Online Help.

## Contents of the sales package

In the sales package, you should find the following items:

- a Nokia Card Phone, an integrated PC Card and mobile transceiver
- a CD-ROM containing the software, including the Online Help
- a protective case for the card phone
- this Installation Guide

The license agreement is included in the Setup program and in the Online Help of the Nokia Card Phone. If you cannot find all these items, contact your dealer.

## System requirements

The Nokia Card Phone requires:

- an Intel compatible PC that runs Windows 95/98, Windows NT 4.0 (with Service Pack 3 or newer) or Windows 2000
- a PC Card type II or III extension slot
- at least 15 MB of free disk space

### Network services

The Nokia Card Phone works in the GSM 900/GSM1800 cellular networks.

Some of the features supported by the Nokia Card Phone are called network services. Before you can benefit from these services, you must subscribe to them from your service provider and obtain instructions on their use.

Services that need to be subscribed to are typically the Short Message Service (SMS), data service and fax service.

Some service providers may not provide all communications services.

Contact your service provider for further information about the availability and details of the services in your home network.

To access the Internet, you must have subscribed to the data service from your service provider and obtained an Internet access point from an Internet service provider.

### Communications software

To connect to the Internet, or to send and receive e-mail or faxes, or transmit data from your computer, you need the appropriate data and fax communications software. You can use the Nokia Card Phone with most commercially available communications applications, such as Microsoft Exchange, Microsoft Outlook and Netscape Navigator. Windows 95/98, Windows NT 4.0 and Windows 2000 include several communications applications, such as Dial-Up Networking and HyperTerminal.

For more information on data and fax communications, see the "Getting Started" section.

# Installation

This section provides step-by-step instructions on how to install the Nokia Card Phone software on your PC. **Note:** There are some slight differences in the installation process between Windows 95/98/2000 and Windows NT 4.0. If the installation differs from the steps described in this section, follow the instructions on the screen.

If you want to quit the Setup program without installing or uninstalling, just click **Cancel** and the **Exit Setup** window will offer you the possibility of quitting the Setup program. Click **Exit Setup** to quit Setup. If you want to rerun the Setup program after having quit the installation before it was completed, follow the installation steps normally as if you were installing the program for the first time.

**Note:** Please DO NOT INSERT the Nokia Card Phone into the PC Card slot of your computer until the Installation Program asks for it.

## First installation steps

- 1 Exit all Windows programs.
- 2 Remove all other PCMCIA cards from the PC Card slot.
- 3 Insert the CD-ROM into the CD-ROM drive. The Setup program should start automatically. If not, follow the steps below.
- 4 Click the Windows **START** button.
- 5 Select the **Run** command.
- 6 The Run dialog box appears on the screen. Type in the following command line: D:\DISK1\SETUP  
In the above command line, "D:\\" is the CD-ROM drive.
- 7 Click **OK** or press Enter. Wait while the system initialises the Setup program. Next, the **Welcome** window of the Setup is displayed.
- 8 Click **Next** to continue with the Setup program.

## Phone Power-up Warning

The Nokia Card Phone will be switched on during Setup. This is not allowed in some environments, such as hospitals and aeroplanes. To continue with Setup, click **Continue**.



### WARNING!

Do not switch on the phone when wireless phone use is prohibited or when it may cause interference or danger.

### Additional window (Windows 95 only)

- If the **PC Card Modem Power Management** window appears, you are being asked to disable the PC Card Modem Power Management selection in the Windows 95 settings. You must disable the selection in order to be able to install and use the Nokia Card Phone. Click **Yes** to cancel the selection.

### Software Licence Agreement

You must read through and accept the Nokia Mobile Phones Licence Agreement before you can continue with the installation. If you do not accept the Licence Agreement, you cannot use the program and Setup will stop the installation of the program. Select the language of the agreement from the drop-down list box. Click **Yes** to accept the Licence Agreement.

### Setup Type

There are three types of setups available, depending on which components you want to install:

#### Typical

- installs the Nokia Card Phone and two languages: English and the current Windows language if available.

#### Compact

- installs the Nokia Card Phone and the English language.

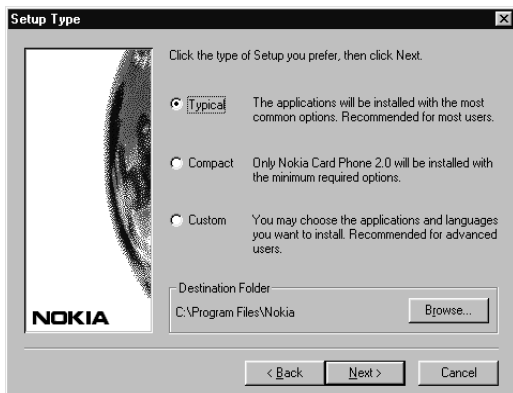
#### Custom

- installs the selected components. In the **Select Components** window, select the applications you want to install. To install additional languages, click the **Languages** button, and in the **Select Languages** window select the languages you want to install. Click **Continue**. Finally, click **Next**.

The Setup program suggests C:\Program Files\Nokia as the default installation directory. If you want to install the program in another drive or directory click **Browse**.

The program places some files in your Windows directory and automatically installs and configures the Windows modem settings.

The program itself requires 10 MB of disk space, but during installation the Setup program needs approximately 15 MB of disk space. If this is acceptable, click **Next** to start the installation.



## Start Copying Files

The **Start Copying Files** window displays the current settings. Click **Next** to proceed and **Back** to change the settings.

## User Information

In this window, you can enter your user information. Click **Next** to proceed.

## Card Phone Driver Settings (Windows NT 4.0 only)

If your PC runs Windows NT 4.0, the Setup program now checks the Nokia Card Phone driver settings. Do not change the suggested settings unless you know that they conflict with the existing hardware. Click **OK** to continue.

## Insert Nokia Card Phone 2.0

Please insert the Nokia Card Phone into the PC Card slot. Under Windows NT 4.0, click **OK**. Under Windows 95/98 and Windows 2000, wait until Setup locates the card phone.

### Driver Installation Check (Windows 95/98, Windows 2000)

This window appears automatically after the Setup program has located the Nokia Card Phone. Setup now checks the driver functionality, Windows Telephone Application Programming Interface (TAPI) and Mobile Phone Application Programming Interface (MPAPI). If the item passed the test, **OK** appears next to the tested item. In case of a failure, **Failed!** is shown. Click **Retest** to rerun the test or **Next** to continue.

If some items failed their test, refer to the Troubleshooting section for possible solutions.

### Setup Complete

The installation has been completed. Select **Yes, I want to restart my computer now** to restart your computer and click **Finish**.

**Note:** Under Windows NT 4.0, the **Driver Installation Check** window appears after you have restarted your computer upon completion of the installation.

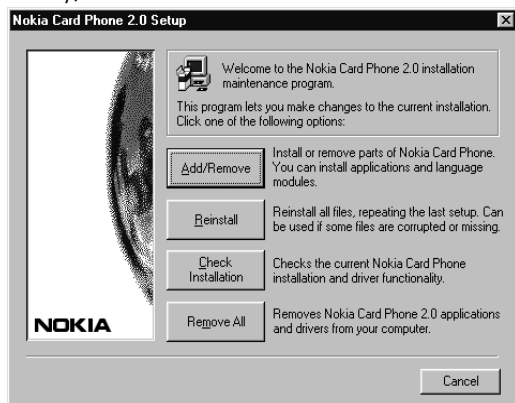
Please read the **README** file, included in the Nokia Card Phone Program Group, for the latest information about the product. This file is provided in English.

# Modifying the Nokia Card Phone Setup

If you want to modify the Nokia Card Phone setup, by installing more languages for example, start by following the instructions given in the "First installation steps" section at the beginning of the previous main section. After the system has initialised Setup, the **Nokia Card Phone 2.0 Setup** window is displayed. You can choose one of the following options:

- **Add/Remove**  
Select this option to install or uninstall components. In the **Select Components** window, select the components that you want to install, and clear the components you do not want to install. To install or uninstall languages, click the **Languages** button.
- **Reinstall**  
Select this option to reinstall all the program files. This reinstallation repeats the previous setup. Reinstallation is needed when some of the files have been corrupted.
- **Check Installation**  
Select this option to check the existing Nokia Card Phone installation and driver functionality.
- **Remove All**  
Select this option to uninstall the Nokia Card Phone program files and drivers.

Finally, click **Next**.



# Getting started

## Starting the Nokia Card Phone

**Note:** If you are running Windows NT 4.0, insert the Nokia Card Phone into the PC Card slot before you turn on the computer.

Slide the SIM card into the SIM card slot of the card phone and insert the card phone into the PC Card slot of your computer. The Nokia Card Phone program starts automatically when the card phone is inserted. You may have to enter the PIN (Personal Identity Number) code if the PIN code request is activated in the SIM card. The PIN code is usually supplied with the SIM card. If you enter an incorrect PIN code three times in a row, you will need a PUK (Personal Unblocking Key) code to unblock the SIM card. The PUK code may be supplied with the SIM card. If not, contact your service provider.

## Using the Nokia Card Phone

The Nokia Card Phone is automatically switched on when you insert it in the PC Card slot of your computer. The Nokia Card Phone program consists of five applications: Contacts, Messages, Dialler, Call Register and Settings. To open an application, click the application icon you want in the left-hand icon bar.

You can view the status of the card phone in a separate Monitor window. To open the Monitor window, click the **Go** menu and then click **Monitor**.

To exit the Nokia Card Phone program, remove the card phone from the PC Card slot and select the **Exit** command from the **File** menu. **Note:** If your PC runs Windows NT 4.0 and you are not using Plug and Play software, do not remove the Nokia Card Phone from the PC Card slot until you have turned off the computer.

Detailed information on how to use the Nokia Card Phone is available as an Online Help. To open Help, click the Help menu or Help buttons in the Nokia Card Phone windows.

## Text messages

The Short Message Service (SMS) is a network service that enables you to send and receive short text messages over the digital cellular network. Messages can be read on any mobile phone that has SMS capability.

The sending and receiving of text messages requires that the Short Message Service (SMS) be available in the network you are using and activated for your SIM card. Contact your service provider for details.

Before you can send text messages, you must store the SMS message centre number in the Settings window, Messages tab.

## **Voice calls**

It is possible to make voice calls from your PC with the Headset HDC-6D which is available as an accessory (see the "Accessories" section below).

## **Data and fax communication**

The Nokia Card Phone provides the functionality of a cellular modem. To send and receive e-mail and faxes, connect to remote computers and access the Internet, you also need the appropriate data and fax communications software. You can use the Nokia Card Phone with a variety of commercially available Windows 95/98, Windows NT 4.0 and Windows 2000 compatible data and fax communications applications. These applications must be correctly configured for use with the Nokia Card Phone, according to the instructions given in the documentation of these applications and your computer. Remember to select the Nokia Card Phone as the modem in each application. The data transfer and fax functions depend on the applications you have chosen, not on the computer or the Nokia Card Phone. For information on how to use an application, please refer to that application's documentation.

The Nokia Card Phone supports three PC Fax standards: EIA/TIA Class 1, Class 2 and Class 2.0. If you have problems with using the Nokia Card Phone for fax transmissions, make sure that the remote end fax machine is Group 3 compatible.

The Nokia Card Phone can also be controlled with AT Commands. For more information, refer to the Nokia Card Phone AT Command Help, included in the Nokia Card Phone Program Group

## **High Speed Circuit Switched Data (HSCSD)**

The Nokia Card Phone supports High Speed Circuit Switched Data (HSCSD) which enables a data transmission speed that is more than four times higher than the standard speed of 9.6 kilobits per second. HSCSD technology is based on the use of multiple timeslots at the same time. In the Nokia Card Phone, the data transmission speed in a single timeslot is 9.6 or 14.4 Kbps, depending on the network. When sending and receiving e-mail, the 14.4

## 12 Getting started

---

Kbps data transmission speed can be doubled up to 28.8 Kbps , and when downloading Web pages, the Nokia Card Phone is able to triple the transmission speed to 43.2 Kbps.

You can change the HSCSD settings of your card phone in the Settings window, Modem tab. The use of these settings requires that your home network supports HSCSD technology and that you have subscribed to this service. Contact your service provider for more information.

### **Dual-band Functionality**

The Nokia Card Phone is a dual-band GSM phone: it operates in GSM 900, GSM 1800 and GSM 900/1800 dual-band networks. Dual-band functionality provides seamless roaming between networks during a call within the same network operator. In practice, dual-band functionality means that you are less likely to get "Network busy" messages. When you are travelling, dual- band functionality gives you more roaming possibilities, depending on your network operator's roaming agreement.

### **Electrostatic Discharge (ESD)**

A discharge of static electricity from a finger or a conductor may cause errors in the function of electric devices. The discharge can result in a "garbled" display and unstable software operation. Cellular connections may become unreliable, data may be corrupted, and the transmission may be halted. In this case you need to end the existing call (if any), and exit the Nokia Card Phone program.

### **Charge in computer batteries**

The Nokia Card Phone does not have its own internal battery. Instead, it uses the computer battery as its power source.

It is possible to charge the computer battery while the card phone is in use. For more information on charging the computer battery, refer to the documentation of the computer.

The power consumption of the phone is approximately the same for data/ fax calls as it is for voice calls of the same length.

## Signal strength affecting cellular transmissions

You need to be in an area that is covered by a network to use the Nokia Card Phone.

Cellular networks differ from landline networks in many ways. For example, traffic loads and the strength of radio signals may vary in a cellular network and cause handovers.

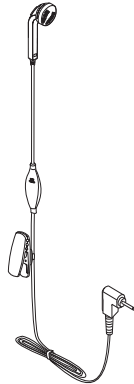
It is recommended that you move the phone to a location where the strongest possible cellular signal can be obtained. When the signal is strong, cellular transmission is the most efficient.

## Accessories

Use only accessories approved by the phone manufacturer for use with the Nokia Card Phone. The use of any other types will invalidate any approval or warranty applying to the phone, and may be dangerous.

For more information on the availability of approved accessories, please check with your dealer.

### Headset

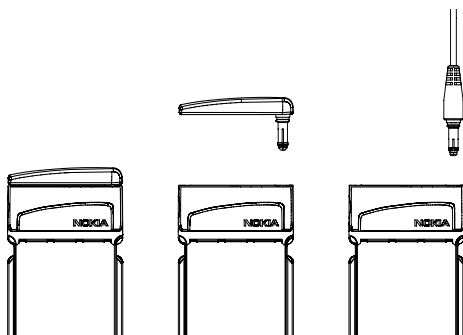


In order to make and receive voice calls with the Nokia Card Phone, you need the Headset HDC-6D. With the remote control button, which is located in the microphone part of the headset, you can answer and later end a call. The headset plugs into the connector at the side of the Nokia Card Phone.

## 14 Getting started

---

### External antenna cable



You can improve the reception and operating range of your Nokia Card Phone by using the External Antenna Cable XRP-2. It can be connected to any standard dual-band antenna that has a standard FME antenna connector.

# Troubleshooting

Remember to read the **README** file included in the Windows Program Group of the Nokia Card Phone for the latest information about this product. If you have access to the Internet, the Nokia Web pages at <http://www.forum.nokia.com> have additional information about the Nokia Card Phone.

This section points out the basic problems that could occur when you are installing and using the program. There is a list of symptoms and possible actions you can take in any of the following situations below.

## **The Setup program does not start properly or is aborted.**

Make sure that you are using Microsoft Windows 95/98, Windows NT 4.0 (with Service Pack 3 or newer) or Windows 2000.

It is recommended that there be at least 15 MB of free disk space on your computer.

Close all Windows programs before starting the Setup program. Also make sure that there are no MS-DOS applications running in the Windows DOS Prompt.

It is recommended that you restart the computer before you start to install the Nokia Card Phone.

## **Not enough disk space for installation.**

There is not enough space to complete the installation on the selected drive. Select another drive for installation or delete unnecessary files to free up additional disk space.

Select fewer languages in the Setup Type/Custom Setup window.

If there are several hard disk drives in the system and you decide to install the program on a drive other than the one where the Windows system files are located, disk space is required on both drives. The program will always need to place some files in the Windows directory.

## **Setup does not accept the target directory.**

The program can only be installed on a local drive.

The path to the directory is too long, more than 80 characters. Select another directory or shorten the names of the subdirectories.

## 16 Troubleshooting

---

### **The Nokia Card Phone cannot be installed or used.**

The Interrupt Request (IRQ) resources may be in conflict. Check the Nokia Card Phone resources from Control Panel/System/Device Manager/Modem/Nokia Card Phone/select Properties/Resources. If there is a resource conflict, consult the Windows online help on changing the resource settings.

If you have Windows 95 OSR#2, do not start the installation by first inserting the card phone. If you already have done this, you may have an incorrect modem driver selected. To change the driver, select the Control Panel/System/Device Manager/Modems, and remove the Standard PCMCIA modem. Then remove the card phone and restart setup.exe.

In Windows NT 4.0, there may be problems when third-party Card Services are used. For example, hot swapping may not be possible. Currently, the Nokia Card Phone supports SystemSoft CardWizard and Softex Card Services.

The card phone is not properly inserted. Make sure that the PC Card slot of the computer is functioning properly and that the Nokia Card Phone driver is installed (in Control Panel: Modems).

Also make sure that the SIM card has been inserted.

Make sure that the Nokia Card Phone is fully compatible with the communications application. If in doubt, contact your dealer.

### **You want to change the language of the program.**

The language is changed in the Settings main view, General tab. Select the language in the Language drop-down box and click **Apply**. The languages available are those that were selected during the installation. The change takes effect after you restart the program.

### **The program cannot be reinstalled.**

The Nokia Card Phone program may be running. Remove the Nokia Card Phone from the PC Card slot and exit the program by selecting the **File** menu and clicking **Exit**, or by right-clicking the Nokia Card Phone icon on the taskbar and then clicking **Close**.

You can also remove the Nokia Card Phone from the PC Card slot and restart the computer. After this, try again.

**The network signal is weak, and you also suspect interference from the laptop.**

In addition to the regular antenna attached to the Nokia Card Phone, an external antenna may be used. Attach it to the laptop, and the call quality may improve.

**There seems to be problems with call quality.**

Do not obstruct the antenna with anything, your hand for instance.

**A data call is in progress, and this is not shown in the Nokia Card Phone Monitor window or in the Dialler main view, Dialler tab.**

This depends on the communications application that is being used.

**After removing the card phone and inserting it again, Windows stops responding.**

After you remove the card phone, wait for a while before you reinsert it.

# Important safety information

### Traffic Safety

Do not use the Nokia Card Phone while driving a vehicle. If using the phone park the vehicle before conversing.

The use of an alert device to operate a vehicle's lights or horn on public roads is not permitted.

Remember road safety always comes first!

### Operating Environment

Remember to follow any special regulations in force in any area and always power down your phone whenever it is forbidden to use it, or when it may cause interference or danger.

#### Note:

If the Windows 95/98, Windows NT 4.0 or Windows 2000 auto hide taskbar option is selected and the Nokia Card Phone program window is minimized, it is not possible to tell whether you currently have an active phone call.

The Nokia Card Phone is automatically switched on when you insert it in the PC Card slot of the computer. Do not insert the card whenever it is forbidden to use a wireless phone, or when it may cause interference or danger.

When connecting the phone or any accessory to another device, read its user's guide for detailed safety instructions. Do not connect incompatible products.

### Electronic Devices

Most modern electronic equipment is shielded from radio frequency (RF) signals. However, certain electronic equipment may not be shielded against the RF signals from your wireless phone.

*Pacemakers* Pacemaker manufacturers recommend that a minimum separation of 20 cm (6 inches) be maintained between a wireless phone and a pacemaker to avoid potential interference with the pacemaker. These recommendations are consistent with the independent research by and recommendations of Wireless Technology Research. Persons with pacemakers:

- Should always keep the phone more than 20 cm (6 inches) from their pacemaker when the phone is switched on.

- If you have any reason to suspect that interference is taking place, stop using your phone immediately.

*Hearing Aids* Some digital wireless phones may interfere with some hearing aids. In the event of such interference, you may want to consult your service provider.

*Other Medical Devices* Operation of any radio transmitting equipment, including cellular phones, may interfere with the functionality of inadequately protected medical devices. Consult a physician or the manufacturer of the medical device to determine if they are adequately shielded from external RF energy or if you have any questions. Do not use your phone in health care facilities when any regulations posted in these areas instruct you to do so. Hospitals or health care facilities may be using equipment that could be sensitive to external RF energy.

*Vehicles* RF signals may affect improperly installed or inadequately shielded electronic systems in motor vehicles (e.g. electronic fuel injection systems, electronic anti-skid (anti-lock) braking systems, electronic speed control systems, air bag systems). Check with the manufacturer or its representative regarding your vehicle. You should also consult the manufacturer of any equipment that has been added to your vehicle.

*Posted Facilities* Do not use your phone in any facility where posted notices so require.

### **Potentially Explosive Atmospheres**

Do not use your phone when in any area with a potentially explosive atmosphere and obey all signs and instructions. Sparks in such areas could cause an explosion or fire resulting in bodily injury or even death.

Users are advised not to use the phone when at a refuelling point (service station). Users are reminded of the need to observe restrictions on the use of radio equipment in fuel depots (fuel storage and distribution areas), chemical plants or where blasting operations are in progress.

Areas with a potentially explosive atmosphere are often but not always clearly marked. They include below deck on boats; chemical transfer or storage facilities; vehicles using liquefied petroleum gas (such as propane or butane); areas where the air contains chemicals or particles, such as grain, dust or metal powders; and any other area where you would normally be advised to turn off your vehicle engine.

## 20 Important safety information

---

### Vehicles

Only qualified personnel should service the phone. Faulty service may be dangerous and may invalidate any warranty which may apply to the unit.

Do not store or carry flammable liquids, gases or explosive materials in the same compartment as the phone, its parts or accessories.

For vehicles equipped with an air bag, remember that an air bag inflates with great force. Do not place objects, including both installed or portable wireless equipment in the area over the air bag or in the air bag deployment area. If in-vehicle wireless equipment is improperly installed and the air bag inflates, serious injury could result.

Remove your card phone from the PC Card slot before boarding an aircraft. The use of wireless telephones in an aircraft may be dangerous to the operation of the aircraft, disrupt the wireless telephone network and may be illegal.

Failure to observe these instructions may lead to suspension or denial of telephone services to the offender, or legal action or both.

### Emergency Calls



**IMPORTANT!**

**NOTE:** Voice calls can **ONLY** be made by using a compatible Nokia headset.

This phone, like any wireless phone, operates using radio signals, wireless and landline networks as well as user-programmed functions which cannot guarantee connection in all conditions. Therefore you should never rely solely upon any wireless phone for essential communications (e.g. medical emergencies).

Remember, to make or receive any calls the phone must be switched on and in a service area with adequate signal strength. Emergency calls may not be possible on all wireless phone networks or when certain network services and/or phone features are in use. Check with local service providers.

To make an emergency call:

1. Insert the Nokia Card Phone in the PC Card slot of the computer.

Some networks may require that a valid SIM card is properly inserted in the phone.

2. Connect the headset to the card phone.
3. Open the Dialler application by selecting the **Go** menu, **Dialler** command.
4. In the Dialler tab, key in the emergency number for your present location (e.g. 112 or some other official emergency number). Emergency numbers vary by location.
5. Press Enter.
6. Confirm that you have achieved a sufficiently clear connection for a voice call.

If certain features are in use (Call Restricting etc.), you may first need to turn those features off before you can make an emergency call. Consult the Nokia Card Phone documentation and your local cellular service provider.

When making an emergency call, remember to give all the necessary information as accurately as possible. Remember that your wireless phone may be the only means of communication at the scene of an accident – do not cut off the call until given permission to do so.

# Care and maintenance

Your phone is a product of superior design and craftsmanship and should be treated with care. The suggestions below will help you to fulfill any warranty obligations and to enjoy this product for many years. When using your phone OR any accessory:

Keep it and all its parts and accessories out of small children's reach.

Keep it dry. Precipitation, humidity and liquids contain minerals that will corrode electronic circuits.

Do not use or store it in dusty, dirty areas. Its moving parts can be damaged.

Do not store it in hot areas. High temperatures can shorten the life of electronic devices, damage batteries, and warp or melt certain plastics.

Do not store it in cold areas. When the phone warms up (to its normal temperature), moisture can form inside the phone, which may damage electronic circuit boards.

Do not attempt to open it. Non-expert handling of the device may damage it.

Do not drop, knock or shake it. Rough handling can break internal circuit boards.

Do not use harsh chemicals, cleaning solvents, or strong detergents to clean it. Wipe it with a soft cloth slightly dampened in a mild soap-and-water solution.

Do not paint it. Paint can clog the device's moving parts and prevent proper operation.

Use only the supplied or an approved replacement antenna. Unauthorised antennas, modifications or attachments could damage the phone and may violate regulations governing radio devices.

If the phone or any accessory is not working properly, take it to your nearest qualified service facility. The personnel there will assist you and, if necessary, arrange for service.