



Quick Guide to Using the Nokia Card Phone with Lotus cc:Mail 8.2

In this Quick Guide, it is assumed that the Nokia CardPhone is already installed.

1. Installation and setting up

Install the client as instructed in the Lotus cc:Mail 8.2 (later called cc:Mail in this document) User Guide. You must also have the correct settings for your post office, etc. available when installing the client. Before using the Nokia products you have to copy a script file to the location where all other *.MDM files are stored. (for example *C:\LOTUS\CCMAIL\MDM*).

The Nokia files can be downloaded from our support web pages which can be found at <http://www.forum.nokia.com>

When the files are copied to the correct location, the cc:Mail has to be configured from *Actions -> Locations...* (Figure 1).

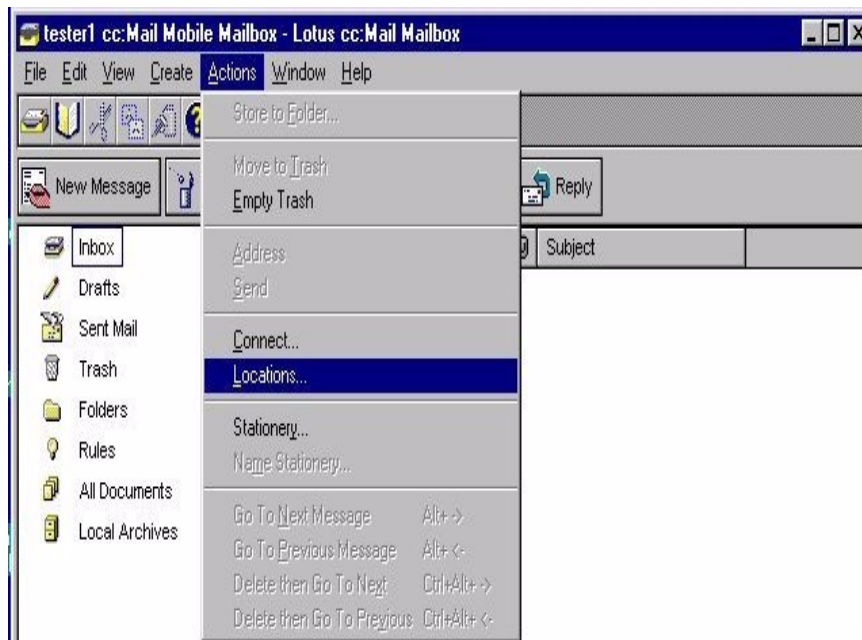


Figure 1. Starting setup ..

Then choose one of the locations and choose *Edit*.. When *Edit* is selected the main window of the location is opened. Choose the Connections tab (Figure 2).

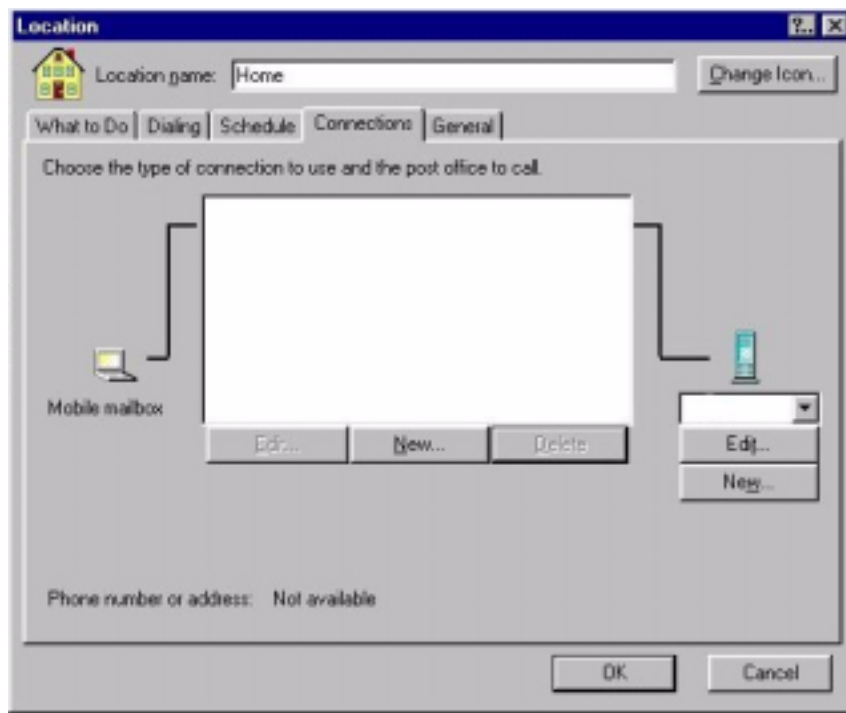


Figure 2. Making a new connection.

By choosing *New...* it is possible to choose the communications method and other communication settings. Firstly, from the modem list the correct modem must be chosen for the Nokia CardPhone (Figure 3) as the active modem.

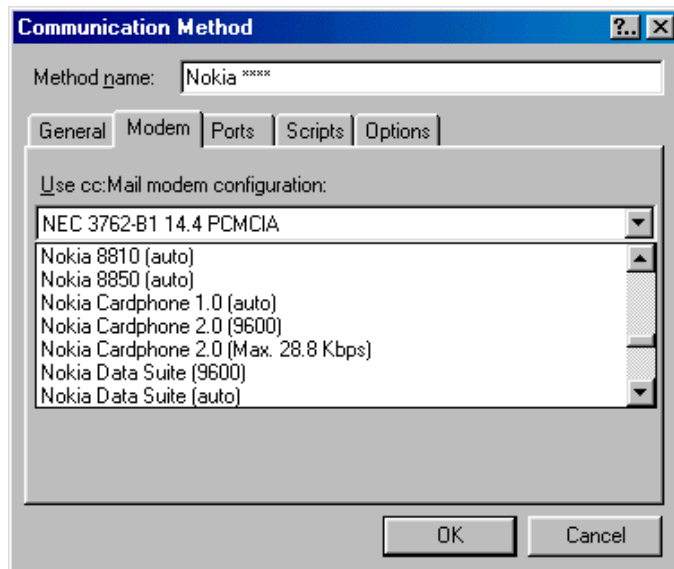


Figure 3. Choosing the right modem ...

Then choose the port settings and change them to their correct status; it is only necessary to change port and speed settings (Figure 4). *NOTE: To find out which port the Nokia CardPhone is using, open the Win95/98 Modems (Start -> Settings -> Control Panel -> Modems) and look at the Modem entries and select Nokia CardPhone and properties and check the COM port. Specify the port in your communication application. NOTE! If the Nokia CardPhone is using COM port 5 or above please change the COM port to 4 or lower with CardPhone's COM Port Changing Tool.*

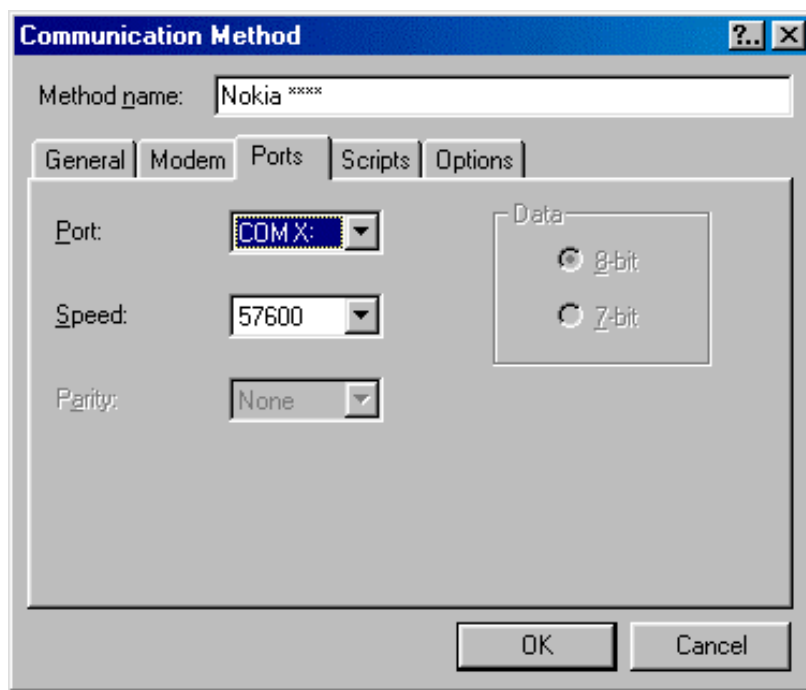


Figure 4. Port settings...

When the port and modem settings are changed accept all by clicking OK. It is shown as the named connection (Figure 5).

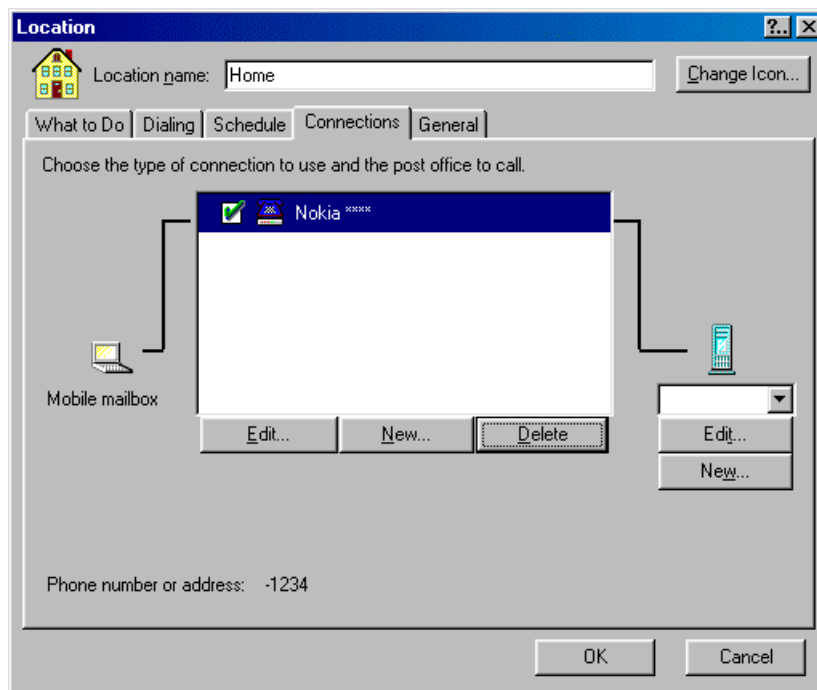


Figure 5. Accepting the connections.

You also have to edit the post office settings. This can be done by choosing Edit.... (under the server icon) (Figure 6). Select New.. and the post office settings can then be added.

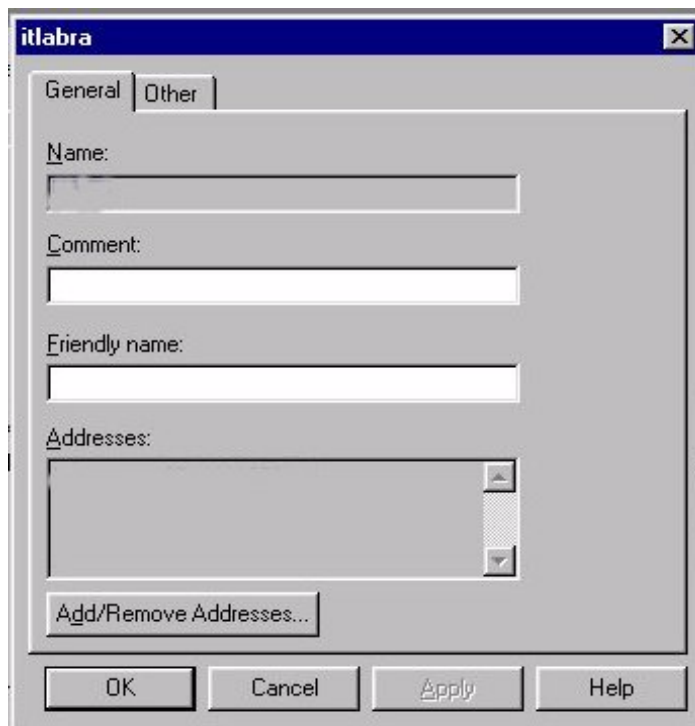


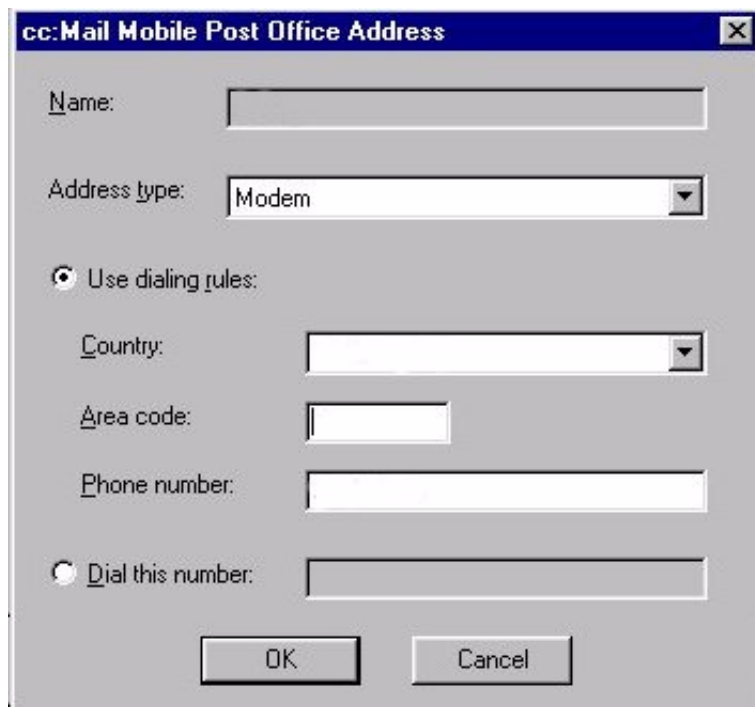
Figure 6. Edit the post office settings.

By choosing Add/Remove Addresses.... The post office settings can be set through New.. (Figure 7).



Figure 7. Post office addresses.

Add the relevant country code (choose the correct country from the list), add the area code (without the first zero), followed by the phone number without the area and country codes. After this, accept with the OK button. (Figure 8)



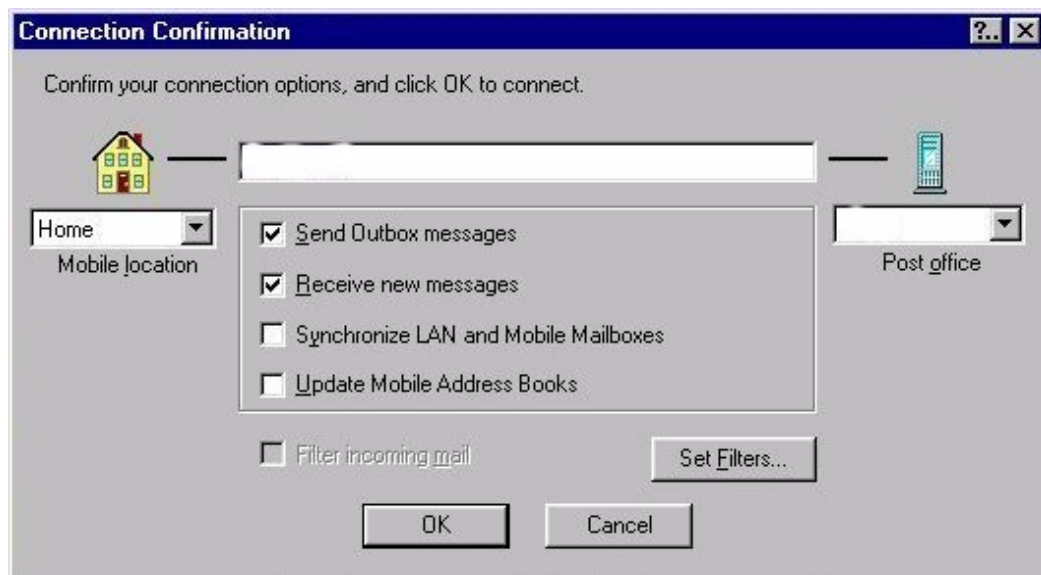
The dialog box is titled "cc:Mail Mobile Post Office Address". It contains the following fields and controls:

- Name:** A text input field.
- Address type:** A dropdown menu currently showing "Modem".
- Use dialing rules:** A radio button that is selected.
- Country:** A dropdown menu.
- Area code:** A text input field.
- Phone number:** A text input field.
- Dial this number:** A radio button that is not selected, followed by a text input field.
- Buttons:** "OK" and "Cancel" buttons at the bottom.

Figure 8. Post office addresses continued...

1.1 Sending / Making a connection

Connection to the post office can be made by clicking *Actions* -> *Connect...* The connection is confirmed by clicking OK and after that the client will start to call the phone number which was defined earlier (Figure 9).



The dialog box is titled "Connection Confirmation". It contains the following elements:

- Text:** "Confirm your connection options, and click OK to connect."
- Home / Mobile location:** A dropdown menu showing "Home".
- Post office:** A dropdown menu with a mobile phone icon above it.
- Checkboxes:**
 - ☒ Send Outbox messages
 - ☒ Receive new messages
 - ☐ Synchronize LAN and Mobile Mailboxes
 - ☐ Update Mobile Address Books
 - ☐ Filter incoming mail
- Buttons:** "Set Filters...", "OK", and "Cancel".

Figure 9. Connection confirmation.

1.2 Troubleshooting

Make sure that there are NO PARENTHESES in the phone number (NO SEPARATE AREA CODE AND PHONE NUMBER => SET ALL NUMBERS IN THE PHONE NUMBER FIELD)

LEGAL NOTICE

Copyright © Nokia Mobile Phones 2000. All rights reserved.

Reproduction, transfer, distribution or storage of part or all of the contents of this document in any form without the prior written permission of Nokia is prohibited.

Nokia and Nokia Connecting People are registered trademarks of the Nokia Corporation. Other product and company names mentioned herein may be trademarks or tradenames of their respective owners.

Nokia operates a policy of continuous development. Therefore, we reserve the right to make changes and improvements to any of the products described in this document without prior notice.

Under no circumstances shall Nokia be responsible for any loss of data or income or any special, incidental, consequential or indirect damage howsoever caused.

The contents of this document are provided "as is". Except as required by the applicable law, no warranties of any kind, either express or implied, including, but not limited to, the implied warranties of merchantability and fitness for a particular purpose, are made in relation to the accuracy, reliability or contents of this document. Nokia reserves the right to revise this document or to withdraw it at any time without prior notice.