



17.04.00

This Quick Guide is a generic guide for both Nokia Card Phones (1.0 and 2.0). When you are asked to select the modem you will see *Nokia *****, please select one of the following:

Nokia Card Phone 1.0

Nokia Card Phone 1.0 (auto)

Nokia Card Phone 2.0

Nokia Card Phone 2.0 (9600) or Nokia Card Phone 2.0 (max. 28.8 Kbps)

Quick Guide to Using the Nokia Card Phone with Lotus Notes 4.6

In this Quick Guide it is assumed that the Nokia Card Phone is already installed.

Setting up

You must use the correct COM port in Lotus Notes. This COM port can be found as follows: Control Panel - System - Device Manager - Ports (Figure 1). In the case shown, COM1 is correct.

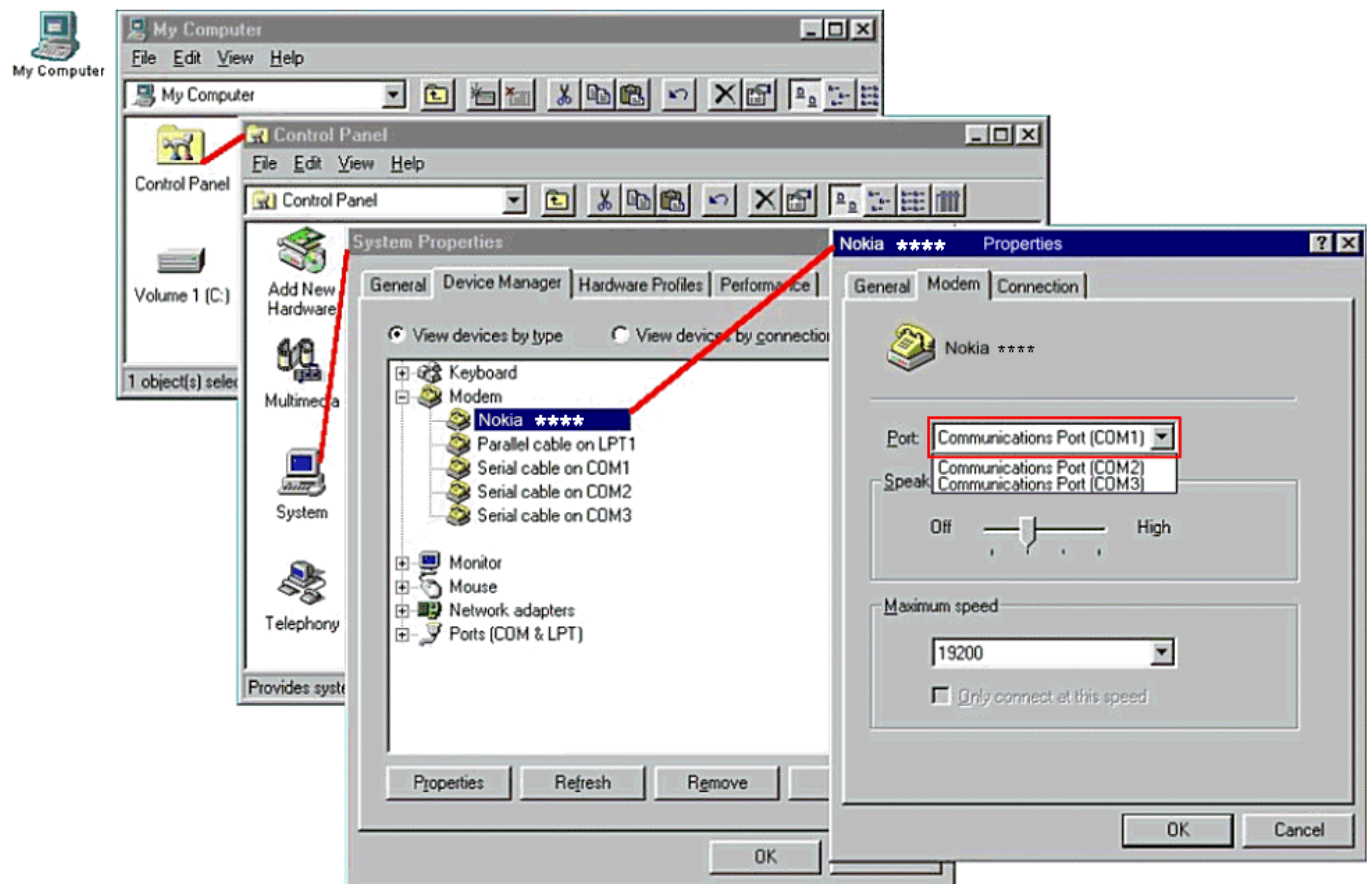


Figure 1. Correct COM port for the Nokia Card Phone.

Before using Nokia products you will need to have a script file copied to the same location in which other *.mdm files are located (for example c:\Program files\Notes\data\modems).

Nokia script files can be downloaded from our support web pages which can be found at the address <http://www.forum.nokia.com>.

Once the files have been copied to the correct location, Lotus Notes must be configured from File – Tools – User Preferences...

In User Preferences check from *Communication Ports* that the COM port your modem uses is enabled (Figure 2).

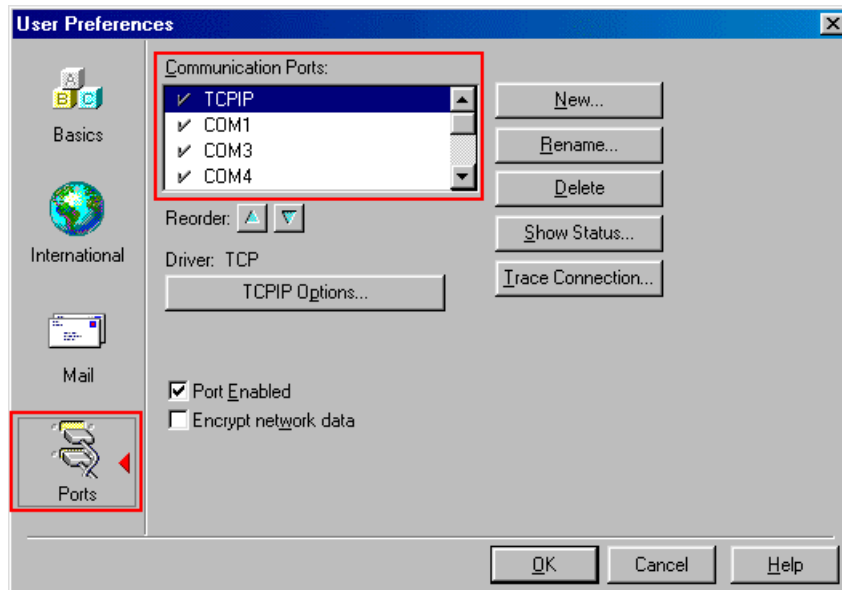


Figure 2. Checking that the COM port is enabled.

Now click on the COM port that your modem uses and click *COMX Options...* to enter *Additional Setup* (Figure 3).

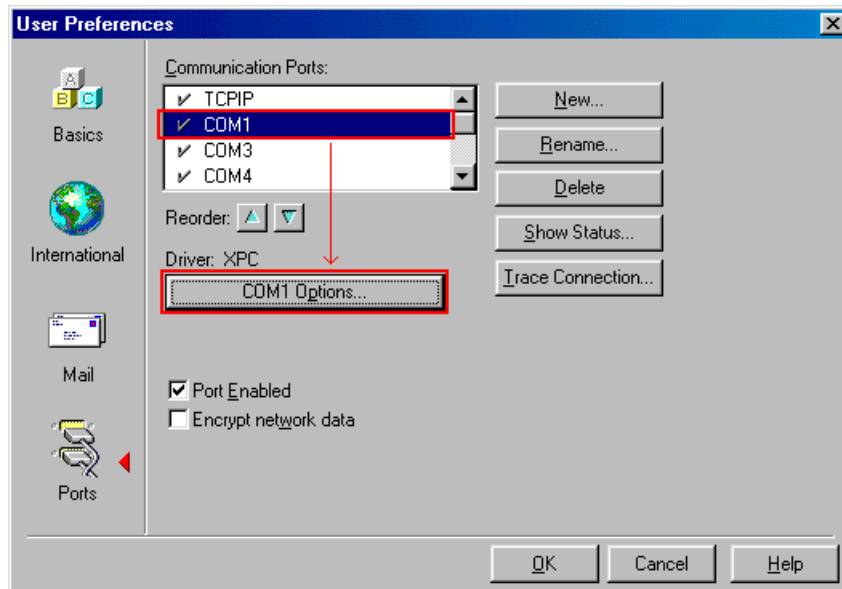


Figure 3. Entering Additional Setup.

In *Additional Setup* select the *Modem type* from the list and you should then see the correct script for your phone (Figure 4).

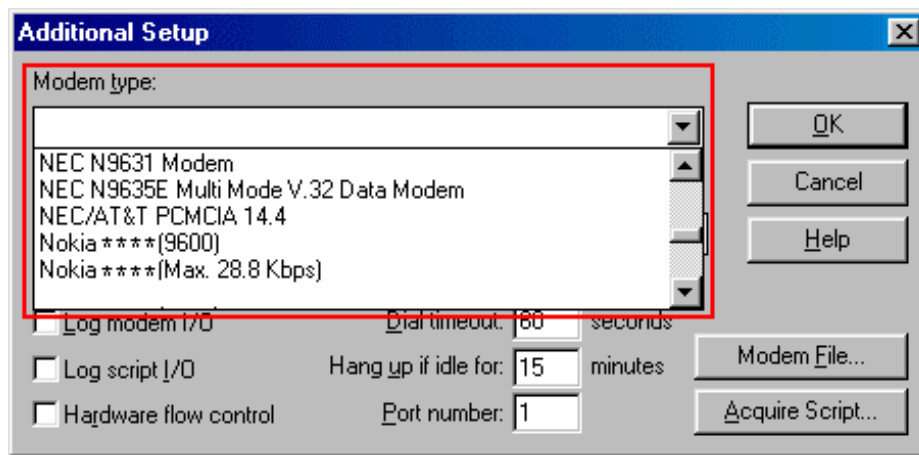


Figure 4. Selecting the correct Modem type to use.

After that, you should have your modem configured in Lotus Notes. Now you may try to connect to the Lotus Notes server. Go to *File – Mobile – Call Server...* Notes then asks for your password. After entering your Notes password a window will appear where you should enter your Server number. Enter your server number and click on *More Options...* From there select the correct port (Figure 5).

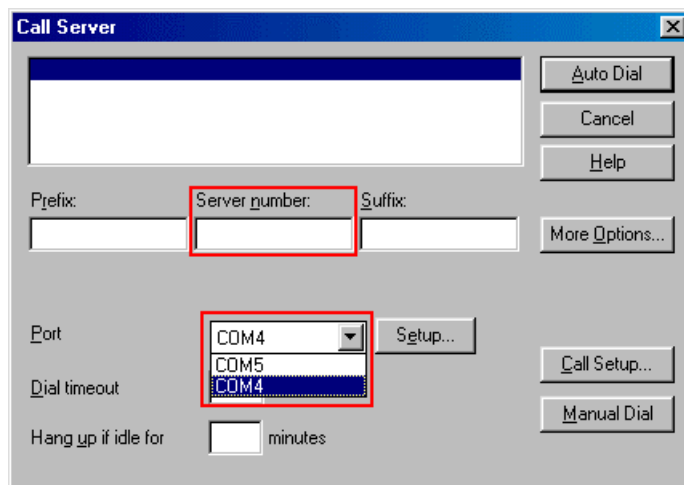


Figure 5. Entering the Server number and checking that the correct COM port is used.

Now click on Auto Dial and Lotus Notes will attempt to Dial to the Lotus Notes Server.

LEGAL NOTICE

Copyright © Nokia Mobile Phones 2000. All rights reserved.

Reproduction, transfer, distribution or storage of part or all of the contents of this document in any form without the prior written permission of Nokia is prohibited.

Nokia and Nokia Connecting People are registered trademarks of the Nokia Corporation. Other product and company names mentioned herein may be trademarks or tradenames of their respective owners.

Nokia operates a policy of continuous development. Therefore we reserve the right to make changes and improvements to any of the products described in this document without prior notice.

Under no circumstances shall Nokia be responsible for any loss of data or income or any special, incidental, consequential or indirect damages howsoever caused. The contents of this document are provided "as is". Except as required by the applicable law, no warranties of any kind, either express or implied, including, but not limited to, the implied warranties of merchantability and fitness for a particular purpose, are made in relation to the accuracy, reliability or contents of this document. Nokia reserves the right to revise this document or to withdraw it at any time without prior notice.