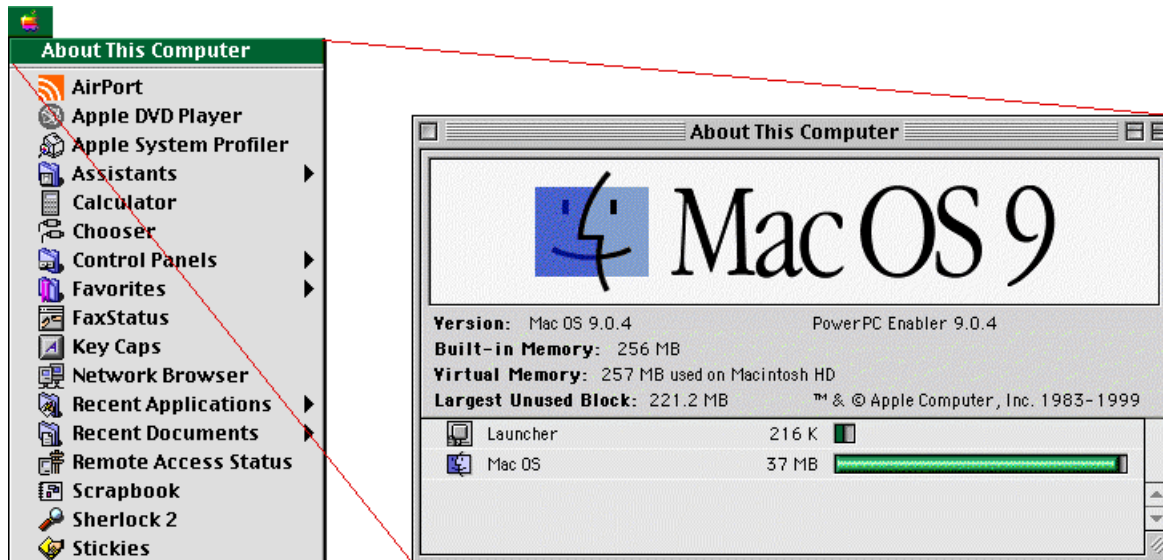




Quick Guide to Using your Nokia Card Phone 2.0 in a Macintosh Environment

First check that you have at least Mac OS 8.6 (Figure 1). You should also have a PPC or G3 processor in your laptop. If you can see the text "PowerPC Enabler..." in the *About This Computer* window, then you have a compatible processor.

Figure 1. Checking Mac OS version.



1. INSTALLING THE NOKIA CARD PHONE 2.0 MACINTOSH USER INTERFACE AND BASIC FEATURES

After you have copied the file NokiaCardPhone2_0.smi.hqx, double click it and it will automatically extract itself. You will now have a self-mounting disk image Nokia Card Phone 2.0.smi and by clicking that file the Nokia Card Phone 2.0 user interface will be installed onto the Macintosh desktop. After that you can drag the installation folder to you hard disk.

Now insert your Nokia Card Phone 2.0 into the pc-card slot and start the user interface. As the user interface starts it will first look for operators and then start (Figure 2).

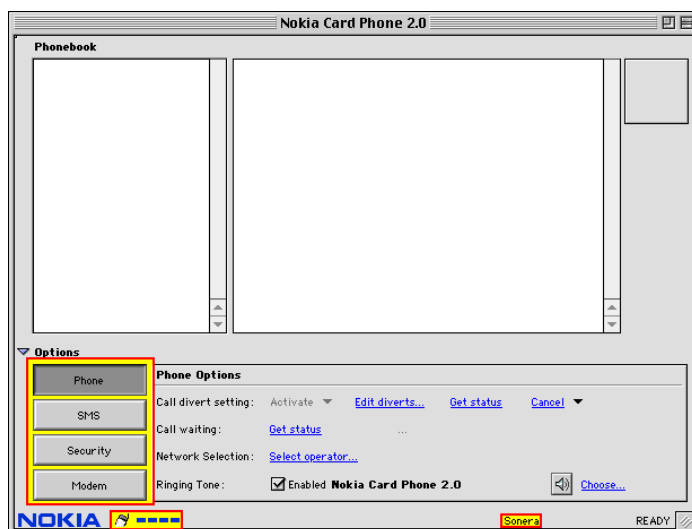


Figure 2. Nokia Card Phone 2.0 Macintosh User Interface.

In the user interface you have four buttons (Figure 3) 1. Phone (here you can adjust network settings...) 2. SMS (SMS settings...) 3. Security (PIN code request...) 4. Modem (Speed settings...). More information on different functions of the user interface can be found in the Help-file.



Figure 3. User Interface Options buttons.

2. SETTING UP A NEW CONNECTION

If you have not yet set up an Internet connection then you have to create a new connection for your Nokia Card Phone 2.0. Go to your Macintosh system drive and then to the Internet folder. In the Internet folder choose Internet Setup Assistant and fill in all the necessary fields according to the documentation you received from your Internet Service Provider.

3. MAKING A CONNECTION

If you have the Nokia Card Phone 2.0 user interface currently active go to *Modem* and select the desired connection method and speed. After you have selected the desired settings, click *Apply Settings* and after that *Switch to Remote Access...*; now the user interface will shut down and the Remote Access will start. If you have already made settings previously then just go to the Control Strip (Note! the user interface cannot be running at the same time as you make a Dial-Up connection) and select from the Remote Access the connection that you have just made (Figure 4).

Click here to get a list of available connections



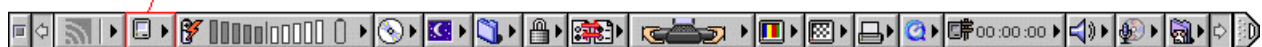
Figure 4. Selecting which connection to use.

When you have clicked on the connection that you have just made the connection will become Active. Now click once again on the Remote Access and select *Connect*. You will not see anything while the connection is being made but after the connection has been successfully established the Apple logo will start to flash and also the time starts to run in the Control Strip. You can view details about your current connection by selecting *Remote Access Status* from the Apple menu.

If something goes wrong then you should check that you have the Nokia Card Phone 2.0 properly inserted and that it is within the GSM service area. Then check the status of the AppleTalk (Figure 5).

Figure 5. Checking AppleTalk status.

Click here to check that AppleTalk is Inactive. If not then make it inactive.



In some cases you may need to restart your computer to make the changes effective. If you have mistyped your ISP telephone number you can change it from the Remote Access menu in the Control Strip. In the Remote Access menu select *Open Remote Access* and you will get a window that provides you with details of your current connections, such as your user name, password and number to call.

LEGAL NOTICE

Copyright © Nokia Mobile Phones 2000. All rights reserved.

Reproduction, transfer, distribution or storage of part or all of the contents of this document in any form without the prior written permission of Nokia is prohibited.

Nokia and Nokia Connecting People are registered trademarks of the Nokia Corporation. Other product and company names mentioned herein may be trademarks or tradenames of their respective owners.

Nokia operates a policy of continuous development. Therefore we reserve the right to make changes and improvements to any of the products described in this document without prior notice.

Under no circumstances shall Nokia be responsible for any loss of data or income or any special, incidental, consequential or indirect damages howsoever caused.

The contents of this document are provided "as is". Except as required by the applicable law, no warranties of any kind, either express or implied, including, but not limited to, the implied warranties of merchantability and fitness for a particular purpose, are made in relation to the accuracy, reliability or contents of this document. Nokia reserves the right to revise this document or to withdraw it at any time without prior notice.