



This Quick Guide is a generic guide for both Nokia Card Phones (1.0 and 2.0). When you are asked to select the modem you will see *Nokia \*\*\*\**, please select one of the following:

Nokia Card Phone 1.0

Nokia Cellular Card Phone

Nokia Card Phone 2.0

Nokia Card Phone 2.0

## Quick Guide to Using the Nokia Card Phone with Procomm Plus v. 4.7

**NOTE!** This Quick Guide shows you the steps you should follow during the setup of Procomm Plus v. 4.7. Also check from My Computer - Dial-Up Networking that you have at least one Dial-Up connection which gives you access to the Web.

1. Connect your Nokia Card Phone to your computer and start Procomm Plus v. 4.7 setup.
2. Proceed through the following steps (Figures 1-x).

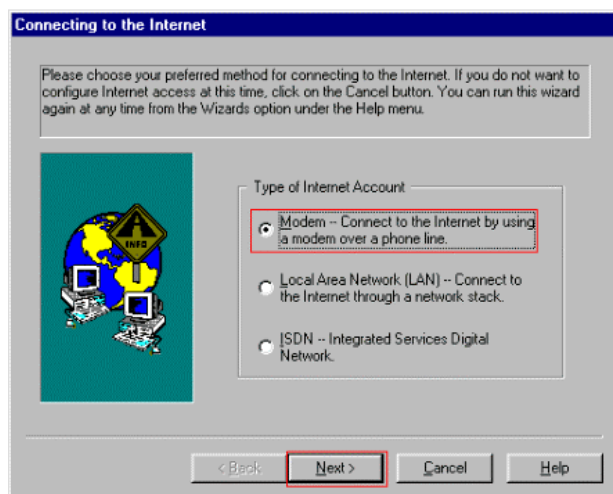


Figure 1. Connecting to the Internet.

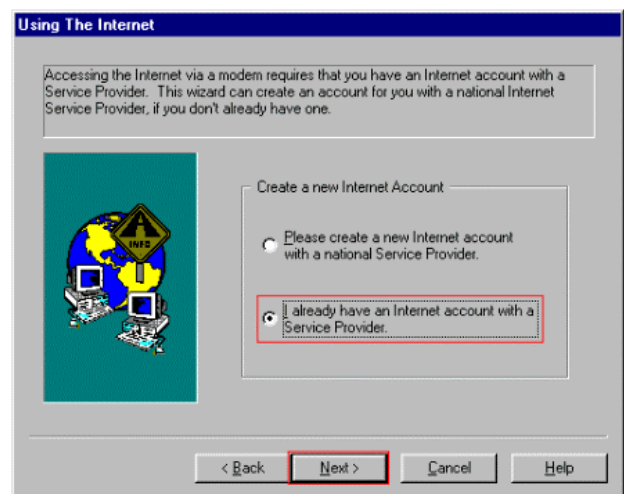


Figure 2. Using the Internet.

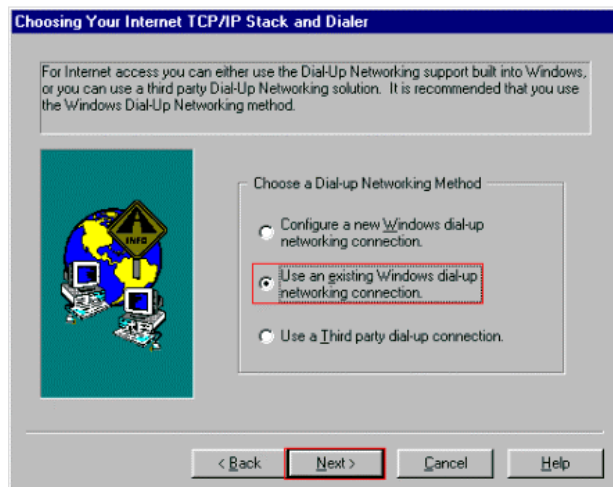


Figure 3. Choosing your Internet dial-up connection.

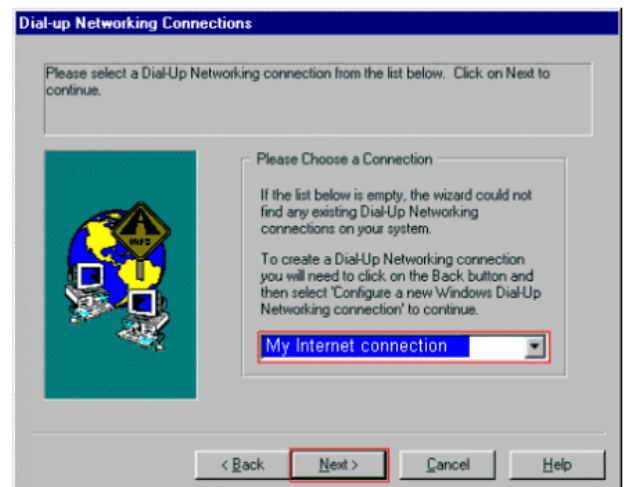


Figure 4. Choosing your previously created IAP.

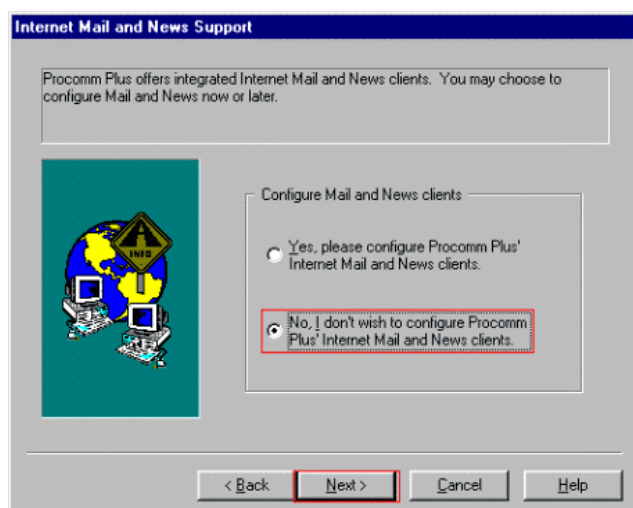


Figure 5. At this point we don't yet configure these settings because this can easily be done afterwards in the program.

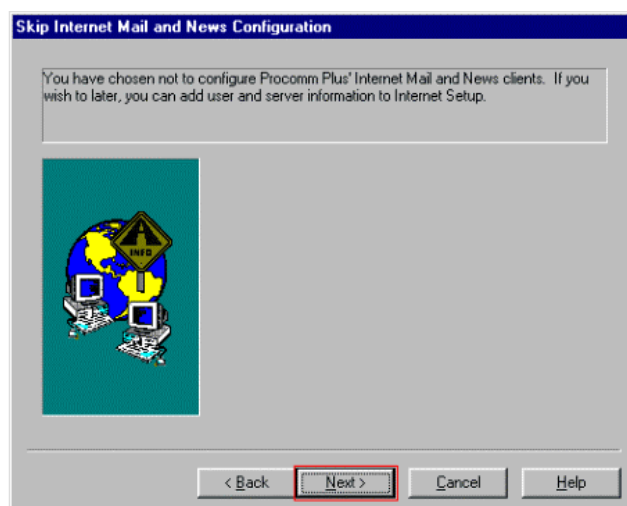


Figure 6. Click Next>

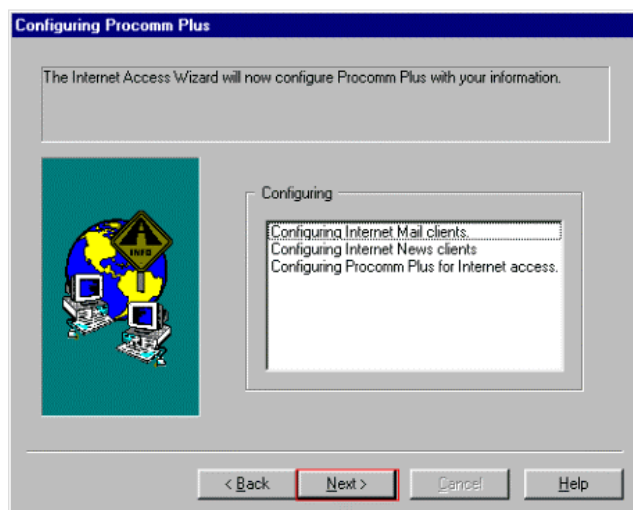


Figure 7. Click Next>

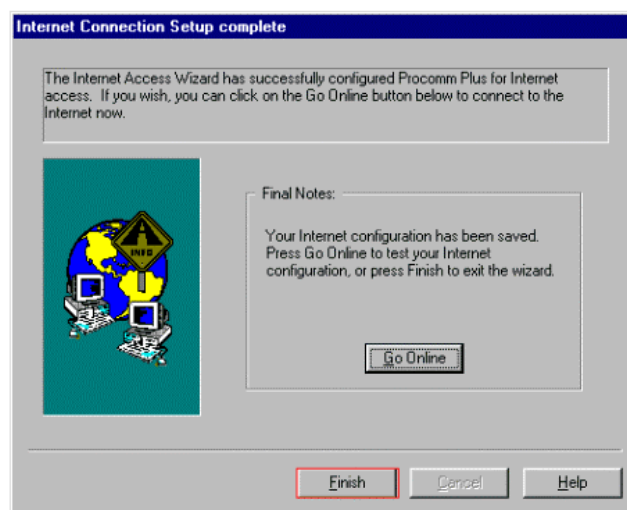


Figure 8. Click Finish. Now you have set the basic configuration for Procomm Plus v. 4.7.

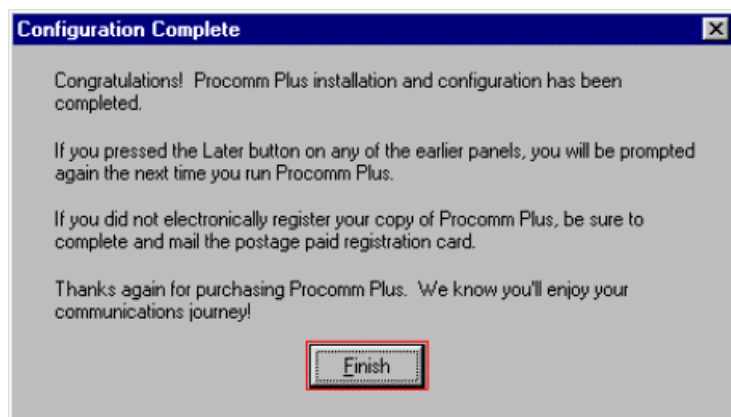


Figure 9. Click Finish for further configurations

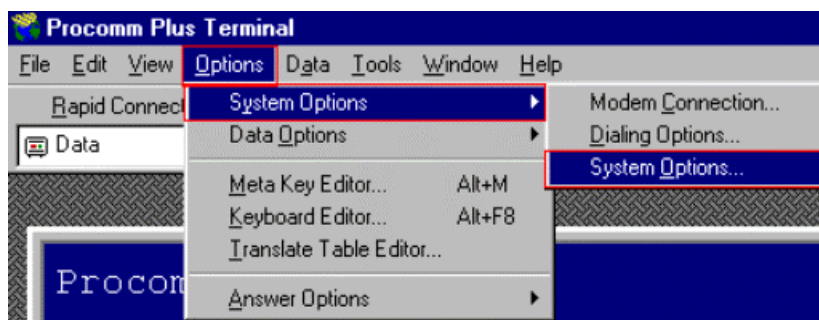


Figure 10. From the Options menu select System Options > System Options

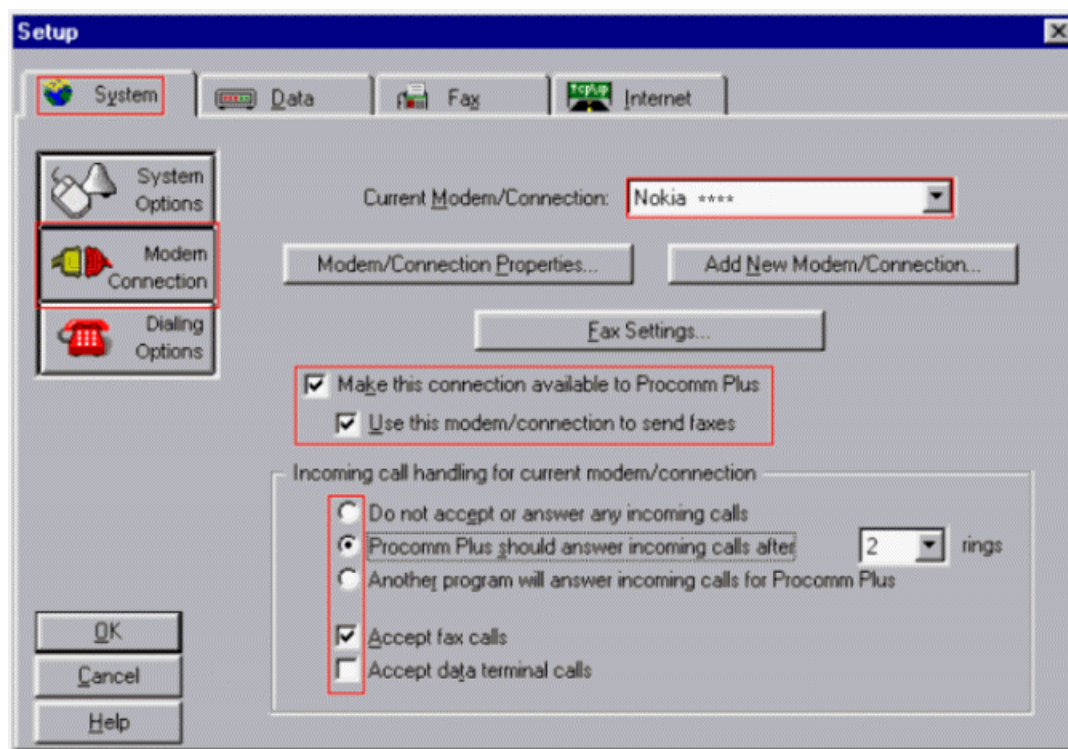


Figure 11. Setting up the Nokia Card Phone for use. Please select all the options you wish to use with your Nokia Card Phone in the Procomm Plus v. 4.7. Please note that if you have other modems installed in your computer you need to either deactivate them from the Procomm Plus or activate different options from within their own options. You can check this by clicking the box beside Current Modem/Connection and browsing through the list to check what other possible modems you may have.

**NOTE!** You can only have either Accept fax calls or Accept data terminal calls active! Because if you have both active then the Procomm Plus will not automatically receive faxes.

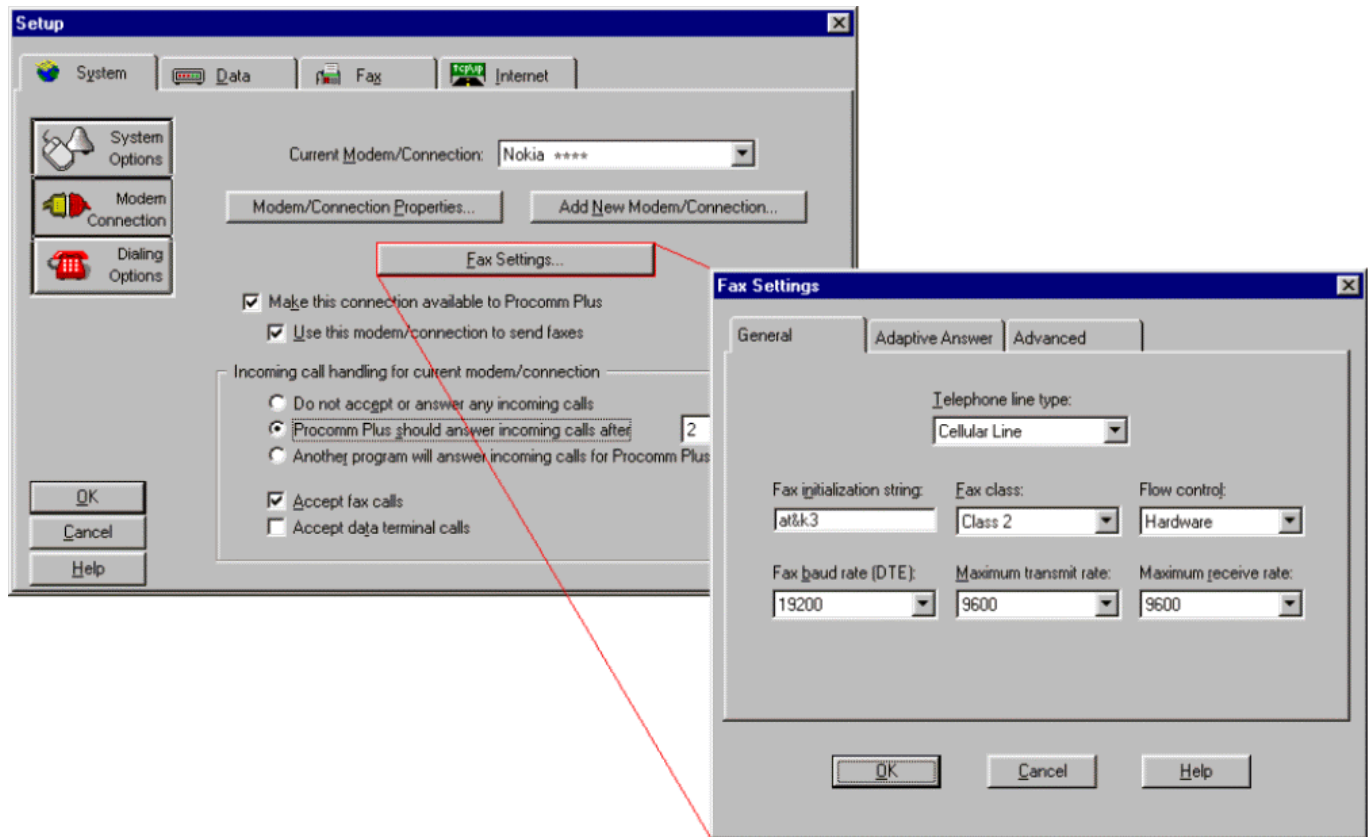


Figure 12. Checking Fax Settings...

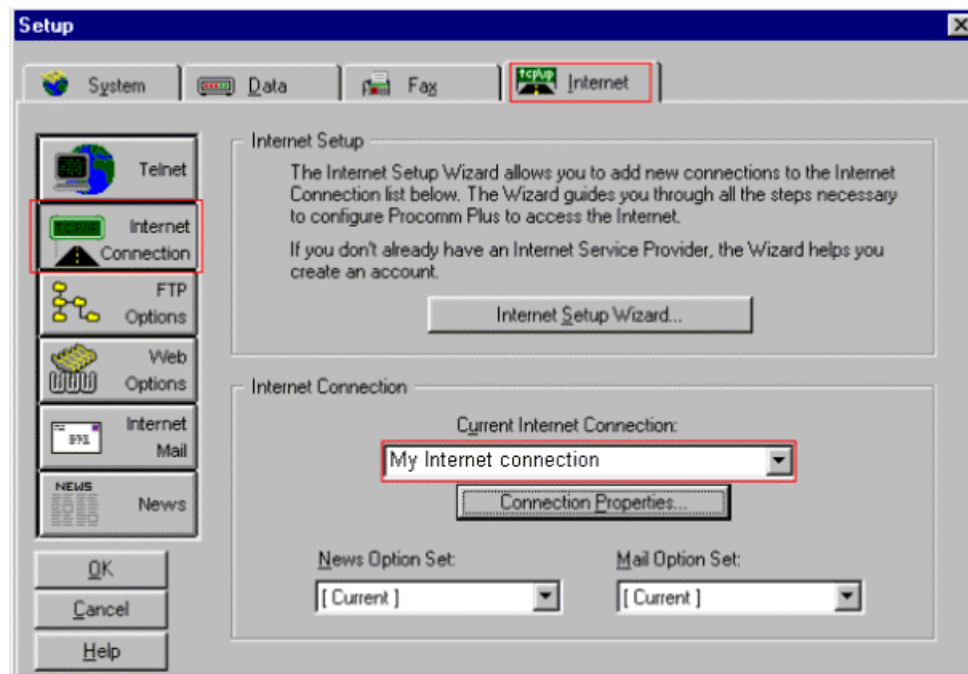


Figure 13. Checking that you have an existing Internet connection active in the Current Internet Connection list.

Now you should have set up Procomm Plus properly for Web browsing, faxing, making data calls and also receiving faxes as well as data calls.

## LEGAL NOTICE

Copyright © Nokia Mobile Phones 2000. All rights reserved.

Reproduction, transfer, distribution or storage of part or all of the contents of this document in any form without the prior written permission of Nokia is prohibited.

Nokia and Nokia Connecting People are registered trademarks of the Nokia Corporation. Other product and company names mentioned herein may be trademarks or tradenames of their respective owners.

Nokia operates a policy of continuous development. Therefore, we reserve the right to make changes and improvements to any of the products described in this document without prior notice.

Under no circumstances shall Nokia be responsible for any loss of data or income or any special, incidental, consequential or indirect damage howsoever caused.

The contents of this document are provided "as is". Except as required by the applicable law, no warranties of any kind, either express or implied, including, but not limited to, the implied warranties of merchantability and fitness for a particular purpose, are made in relation to the accuracy, reliability or contents of this document. Nokia reserves the right to revise this document or to withdraw it at any time without prior notice.