

NOKIA

CARD PHONE



SUPPORT GUIDE FOR USING THE NOKIA CARDPHONE 2.0 IN A WINDOWS CE DEVICE

NOKIA

Contents

1.	INTRODUCTION	1
2.	INSTALLATION	1
3.	GENERAL THINGS ABOUT THE DRIVER.....	2
4.	USING THE USER INTERFACE	2
5.	SETTING UP A NEW CONNECTION	4
3.	MAKING A DIAL-UP CONNECTION.....	6
4.	HANGING UP THE CONNECTION	7
6.	UNINSTALLATION	7

Legal Notice

Copyright © Nokia Mobile Phones 2000. All rights reserved.

Reproduction, transfer, distribution or storage of part or all of the contents of this document in any form without the prior written permission of Nokia is prohibited.

Nokia and Nokia Connecting People are registered trademarks of the Nokia Corporation. Other product and company names mentioned herein may be trademarks or tradenames of their respective owners.

Nokia operates a policy of continuous development. Nokia reserves the right to make changes and improvements to any of the products described in this document without prior notice.

Under no circumstances shall Nokia be responsible for any loss of data or income or any special, incidental, consequential or indirect damages howsoever caused.

The contents of this document are provided "as is". Except as required by applicable law, no warranties of any kind, either express or implied, including, but not limited to, the implied warranties of merchantability and fitness for a particular purpose, are made in relation to the accuracy, reliability or contents of this document. Nokia reserves the right to revise this document or withdraw it at any time without prior notice.

1. INTRODUCTION

How to configure a Windows CE device to function using the Nokia Cardphone 2.0 phone as a modem

To install and run NCP2, you need the following:

- Nokia Cardphone 2.0
- A Windows CE device with ARM, SH3 or MIPS CPU and PC Card slot
- A Windows CE version 2.11/2.12/3.0 device with at least 700k free space
- A connection to the desktop PC via a serial/USB or IR
- Windows 95/98/NT4.0/2000 operating system with ActiveSync 3.0 or above
- At least 2 MB of free hard disk space
- Data services (at least outgoing data) should be activated in order to be able to make data calls
- Descent GSM coverage and preferably a full battery in the Windows CE device as the data connection's power consumption is usually quite high.

2. INSTALLATION

1. Please make sure you meet the system requirements listed above
2. Connect your Windows CE device to your computer and activate ActiveSync
3. Run the executable provided to be expanded into a folder or run Winzip to unzip all files
4. Run Setup.exe in the desktop and all necessary files will be copied to the Windows CE device
5. When the setup program asks: "Install using the default directory" click "Yes"
6. After installation, click "OK" in Windows and press the hard reset button in your Windows CE device

3. GENERAL THINGS ABOUT THE DRIVER







Cardphone 2.0 as a modem and Monitor

Because of the design limitations, you cannot run a Cardphone 2.0 monitor and use the Nokia Cardphone 2.0 as a dial-up modem simultaneously?. So, after the modem speed selection in the Nokia Cardphone 2.0 monitor, you should close the monitor program and run the dial-up networking via the Card Phone modem. This is also the case for editing Phonebook and for SMS management.

Power Up/Down feature

Please note that if you want to save on the power consumed by the Nokia Cardphone 2.0 and to avoid EM radiation usage in some specific environment, you are advised to select the power down function located at the monitor or tray icon, or to remove the Nokia Cardphone 2.0 device manually from the PC card slot. To power up again, just select the power up function located at the tray icon, or plug in the Nokia Cardphone 2.0 again.

4. USING THE USER INTERFACE

1. Insert the Nokia Card Phone 2.0 device into the PC card slot. A  icon is shown in the system tray in the bottom right of the screen. If not then click the Windows logo on the top left corner and select from the menu "Today".
2. If the  icon appears on the system tray, it means that the Nokia Card Phone 2.0 is powered down, and the COM port is not available for access. You must power up the Nokia Card Phone 2.0 before use. Please read below.
3. When the Nokia Card Phone 2.0 is being powered up, if your SIM requests the PIN code, the PIN code request prompt will be shown. Enter the PIN code and click OK. Do not open the COM before the  icon has changed to .
4. Click the  or  icon, and a pop-up menu will be shown (Figure 1):
 - **"Open Monitor"**: Open the Nokia Card Phone 2.0 Monitor. Please note that when the monitor is open, the COM port is not available for access i.e. for dial-up).

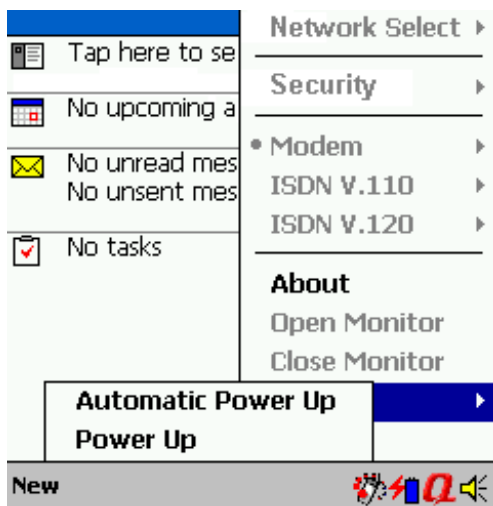


Figure 1.

- **“Close Monitor”**: You can close the monitor from here (This needs to be done in order to make a dial-up connection).
- **“Modem”, “ISDN V.110”, “ISDN V.120”**: choose the modem connection speed that you are going to use when connecting to the Internet using the Windows CE dial-up program.
- **“Security”**: Change the security level, change the pin code and set the pin code request for startup[or “and set the pin code request to be activated at startup”?].
- **“Network Select”**: you can select the network by **“Automatic”** or **“Manual”** means.

“Power”: To power up or down the Nokia Card Phone 2.0, select the power up function. The click mark indicates the power up status. You can also click **“Automatic Power Up”**; then the Nokia Card Phone 2.0 will power up automatically the next time it is inserted in the PC Card slot.



Tip: To use SMS and the Contact Directory feature you need to open the monitor window



Figure 2. When the monitor window is active as shown above the menubar is shown in the bottom of the screen.

5. SETTING UP A NEW CONNECTION

Settings 11:57

Make New Connection

Enter a name for the connection:
test connection

Select a modem:
Nokia Card Phone 2.0

Baud Rate:
115200

Advanced...

Cancel Back Next

123	q	w	e	r	t	y	u	i	o	p	←
Tab	a	s	d	f	g	h	j	k	l	*	
Shift	z	x	c	v	b	n	m	;	'	←	
Ctl	á	ü	@	&				,	.	!	?

Edit

Figure 2. Select a modem and check the Baud Rate (either 57600 or 115200). After that tap Advanced...

Settings 11:58 OK

Advanced

Connection preferences

Data Bits: 8

Parity: None

Stop Bits: 1

Flow Control: Hardware

Terminal

☐ Use terminal before connecting

☐ Use terminal after connecting

☐ Enter dialing commands manually

Port Settings TCP/IP Name Servers

Figure 3. Check Connection preferences Tap OK on upper right corner and then tap Next

Settings 11:58

test connection

Country code:

Area code:

Phone number: 106754

Cancel Back Next

123	[]	{	}	7	8	9	#	%	=	←
^	,	.	<	>	4	5	6	+	-	*	/
±	°	:	\		1	2	3	↓	↑	←	→
\$	¢	€	£	¥	(0)	Tab	space	↵	

Edit

Figure 4. Type in the ISP's phone number and then tap Next.

Settings 11:58

test connection

☒ Cancel call if not connected within 120 seconds

☐ Wait for dial tone before dialing

Wait for credit card tone 0 seconds

Extra dial-string modem commands:

Cancel Back Finish

123	[] { }	7 8 9	# % =	←
^ , . < >	4 5 6	+ - * /		
± ° : \	1 2 3	↓ ↑ ← →		
\$ ¢ € £ ¥ (0)	Tab space	↵		

Edit

Figure 5. Uncheck the Wait for

some cases you may Dial tone before dialling check
need to edit these to get the phone
number right when dialling.

Settings 12:00 ok

Modem Connections

Location: Home

New... Remove

Local Settings

Area code: 425

Country code: 1

☒ Tone dialing

☐ Pulse dialing

☐ Disable call waiting; dial:

Dialing Patterns...

Connections Dialing

To start a modem connection, go to the Connections folder.

Edit

Figure 6. Now go to Dialling leaflet["screen"?]

need to edit these to get the phone
number right when dialling.

Settings 12:00 ok

Dialing Patterns

For local calls, dial: G

For long distance calls, dial: G

For international calls, dial: G

(E,e = country code; F,f = area code; G,g = number)

123	[] { }	7 8 9	# % =	←
^ , . < >	4 5 6	+ - * /		
± ° : \	1 2 3	↓ ↑ ← →		
\$ ¢ € £ ¥ (0)	Tab space	↵		

Edit

Figure 7. In
and go to Dialling Patterns...

box and tap Finish.



Tip: HSCSD settings can be made by clicking the " " icon in the "Today" view; the monitor program must be closed before making a data call

3. MAKING A DIAL-UP CONNECTION

1. Go to the Start menu and select Programs.
2. Select Connections.
3. You should now see the icons of the available connections; click on the connection you have just created (Figure 8).
4. Fill in your User name and Password and tap Connect (Figure 9).
5. Figures 10 and 11 shows the Status screens of the connection.

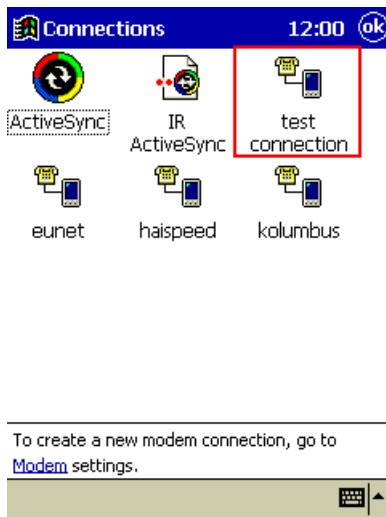


Figure 8.

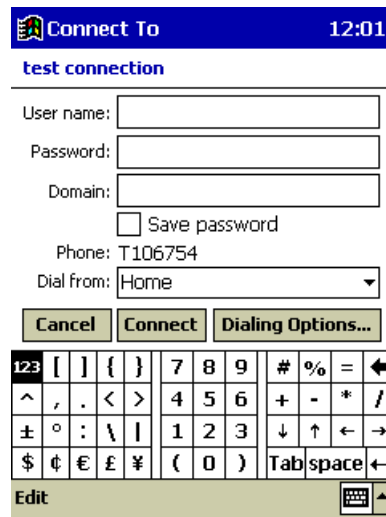


Figure 9.



Figure 10.

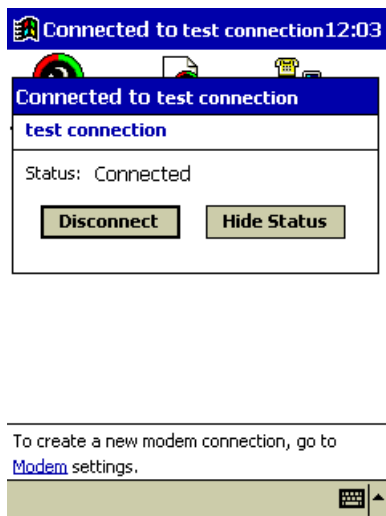


Figure 11.

6. You should now be connected to your ISP, so just start your Internet Explorer or Inbox.

4. HANGING UP THE CONNECTION

1. Go to the Start menu and select "Today"
2. Tap the connection icon in the lower right corner and
3. Select Disconnect (Figure 12).

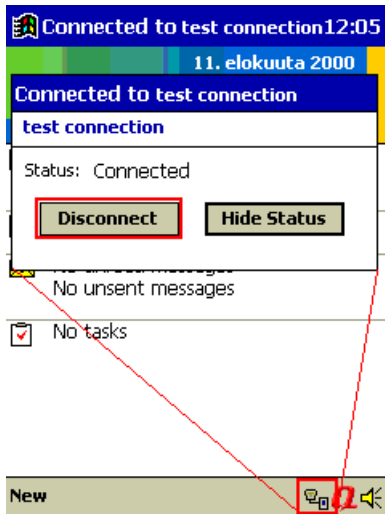


Figure 12.

6. UNINSTALLATION

1. Remove the Nokia Card Phone 2.0 device from the PC card slot.
2. Go to "Control Panel", choose "Remove Programs". Remove "Nokia Card Phone 2.0 Version 1.11". *)

*) The version number may be different depending on what version of the software you have installed.