



This Quick Guide is a generic guide for both Nokia Card Phones (1.0 and 2.0). When you are asked to select the modem you will see *Nokia *****, please select one of the following:

Nokia Card Phone 1.0	Nokia Cellular Card Phone
Nokia Card Phone 2.0	Nokia Card Phone 2.0

Quick Guide to Using the Nokia Card Phone with Windows 95 Fax - Exchange for Windows 95 or Windows Messaging for Windows 95

1. Installing and setting up

This guide assumes that you have already installed the Nokia Card Phone in your computer.

Microsoft Windows 95 fax support can be installed with the Windows 95 mail application (exchange or messaging - hereafter called mail in this document).

1. Ensure that you have fax and mail components installed on your computer. This can be done by opening the Control Panel and clicking 'Add/Remove Programs'. Select the 'Windows Setup' window (Figure 1).

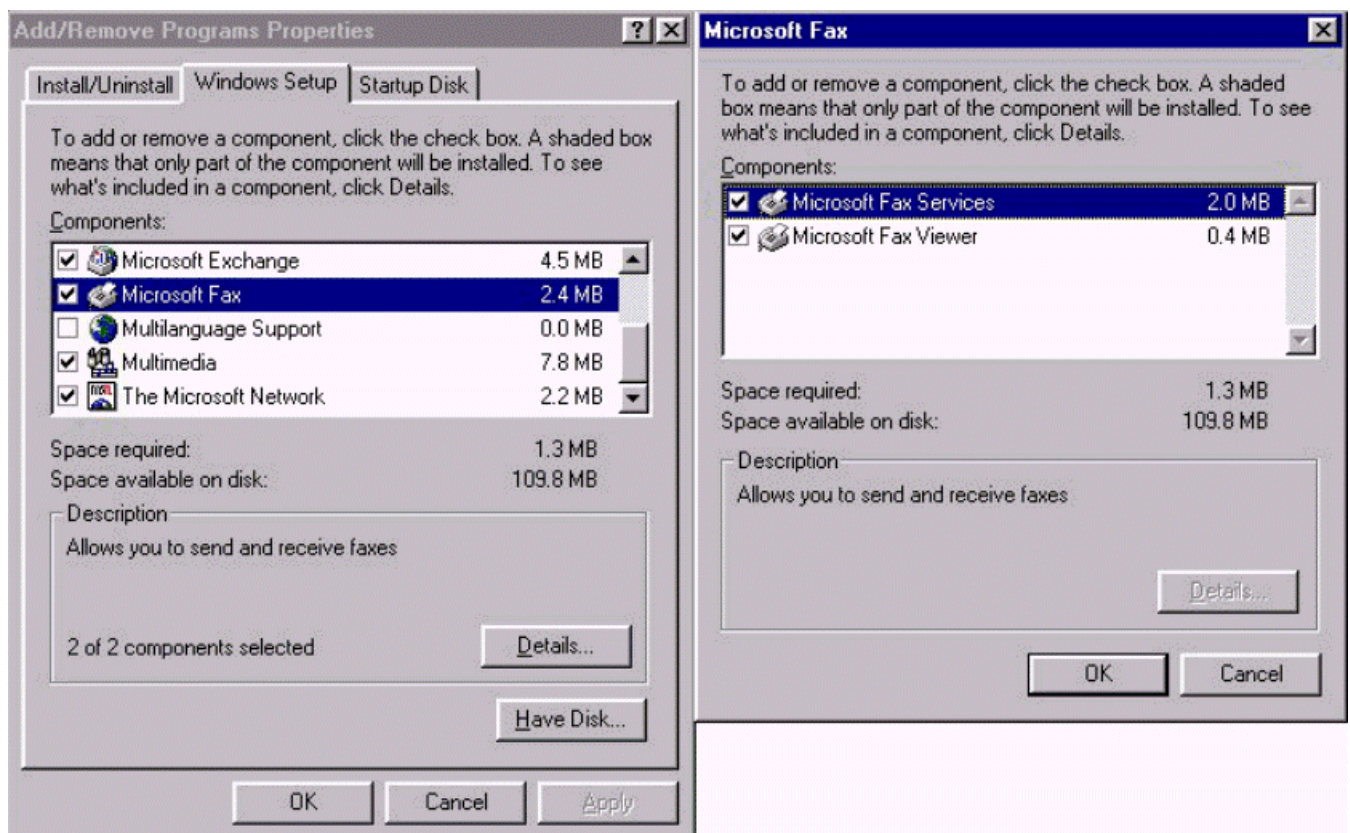


Figure 1. Installing Windows 95 fax components.

You can install fax support for mail the first time you start mail or later by clicking the mail icon in the Control Panel or selecting **Tools - Services..** in mail.

2. If Microsoft Fax does not appear in the Services window, you can install it by clicking the **Add** button and selecting Microsoft Fax in the Add Service to Profile window.

3. Click **OK** (Figure 2).

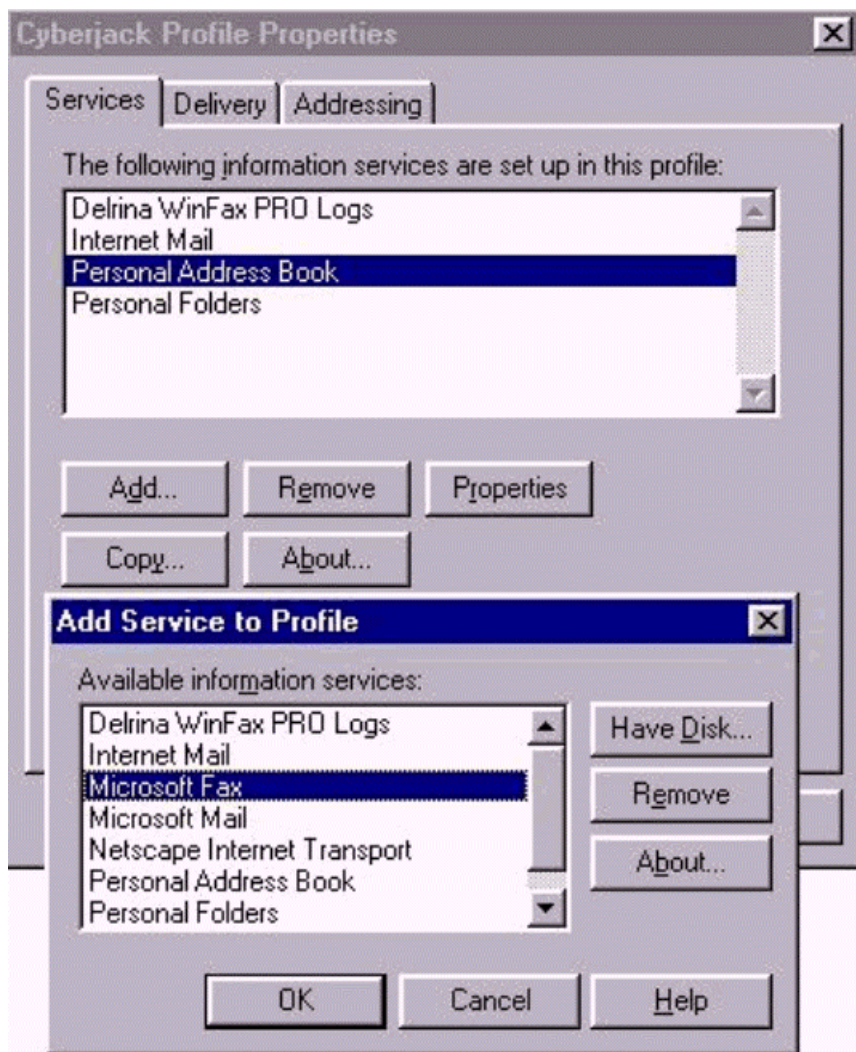


Figure 2. Adding Microsoft Fax using Windows 95 mail.

4. Next you must give the information needed in the fax application. Click the **Yes** button as shown in Figure 3.

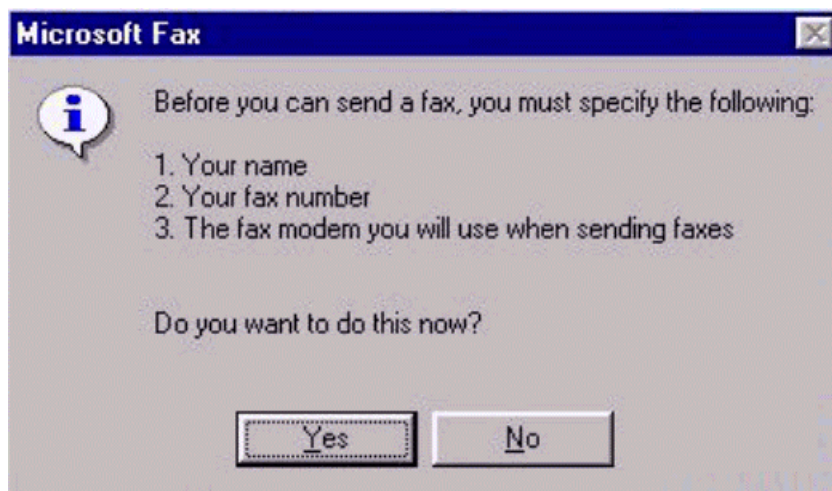
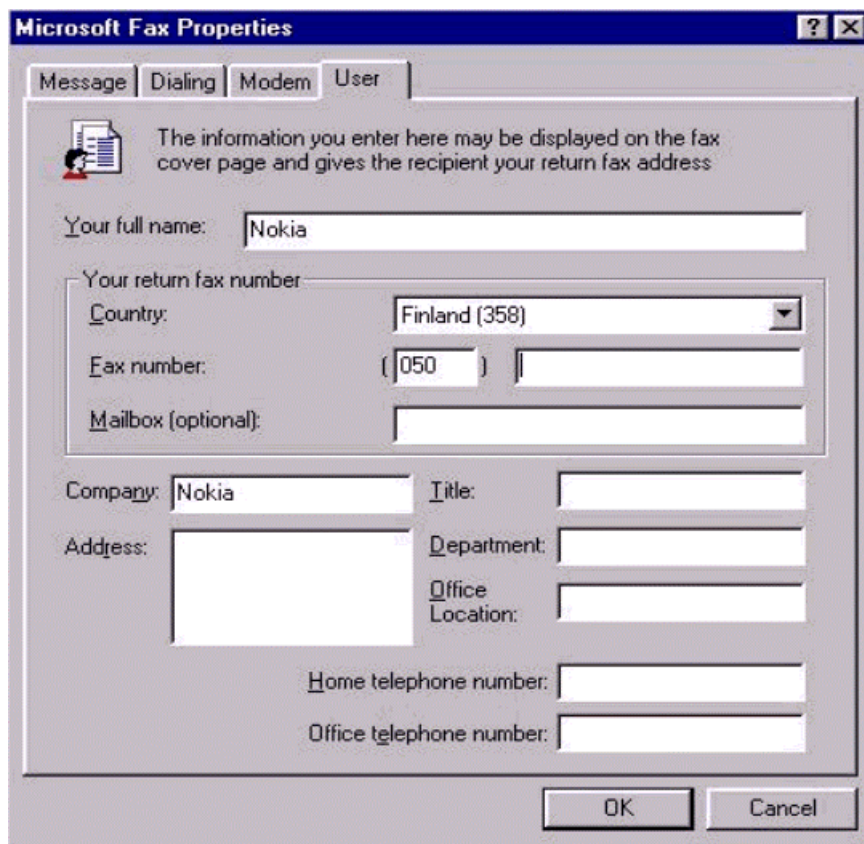


Figure 3. Confirmation of fax support installation for mail.

5. Enter the required information (Figure 4).



Microsoft Fax Properties

Message | **Dialing** | Modem | User

The information you enter here may be displayed on the fax cover page and gives the recipient your return fax address.

Your full name:

Your return fax number:

Country:

Fax number: ()

Mailbox (optional):

Company: Title:

Address:

Department:

Office Location:

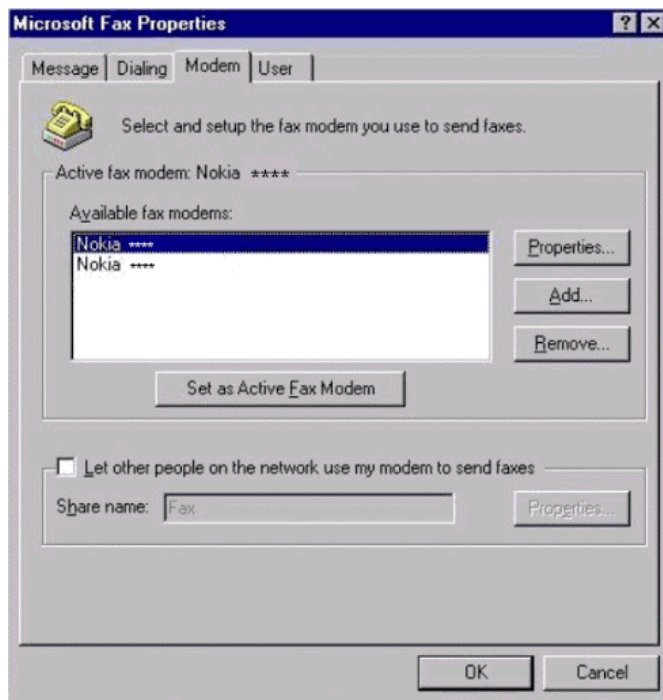
Home telephone number:

Office telephone number:

OK Cancel

Figure 4. User information required for Microsoft mail.

6. Select your fax modem from the 'Available fax modems' box and click the 'Set as Active Fax Modem' button below (Figure 5).



Microsoft Fax Properties

Message | Dialing | **Modem** | User

Select and setup the fax modem you use to send faxes.

Active fax modem: Nokia ****

Available fax modems:

Nokia ****	Properties...
Nokia ****	

Set as Active Fax Modem

Let other people on the network use my modem to send faxes: ☐

Share name: Properties...

OK Cancel

Figure 5. Select the fax modem you want to use.

You may also change the modem's properties or add a new modem.

Click the '**Properties..**' button. Set the answer mode to the 'Answer after # rings' if you want to receive faxes. Set the speaker volume control to the off position. Click the '**Advanced**' button. You must select 'Use class 2 if available' to obtain the best functionality - Class 2 is slightly slower than Class 1, but it is more reliable (Figure 6). Close the Modem properties window and click the '**OK**' button.

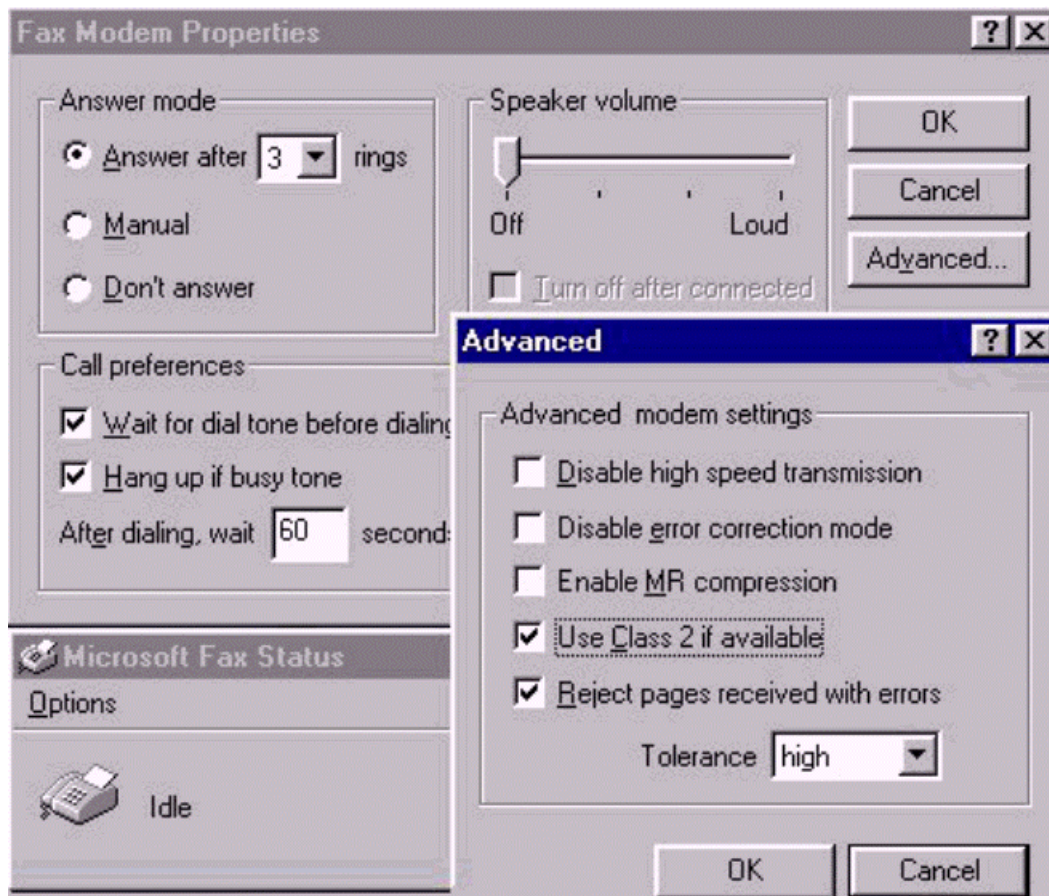


Figure 6. Modem properties and advanced settings.

Now the fax support is installed in your mail application. You have a new menu: **Start - Programs - Accessories - Fax**. There you can find Compose a new fax, cover page editor and request a fax, applications.

1.1

1.2 Sending a fax

After installation you can send a fax from mail by selecting **Compose - New Fax** or directly from the application, for example Write, by using **Microsoft Fax as the default printer** (Figure 7). Check that the information in 'Print to the following port' box is correct. The third way to send a fax is to open **Start - Programs - Accessories - Fax** and select **Compose new fax**.

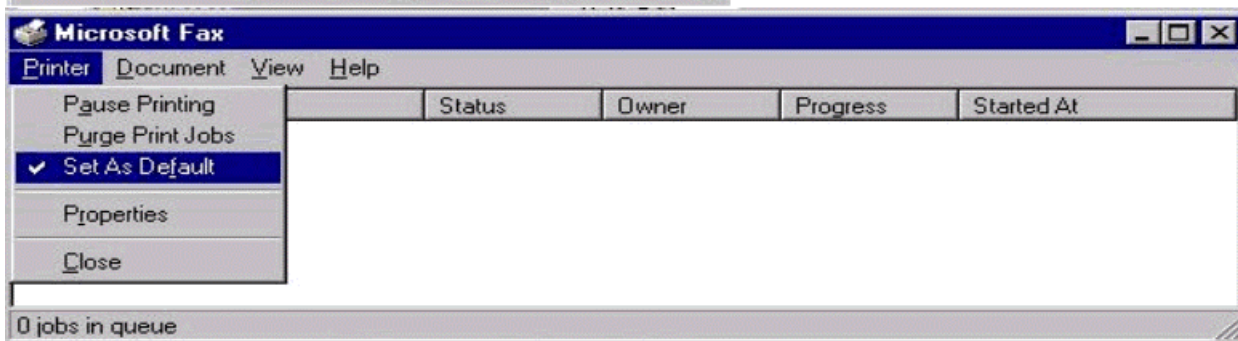
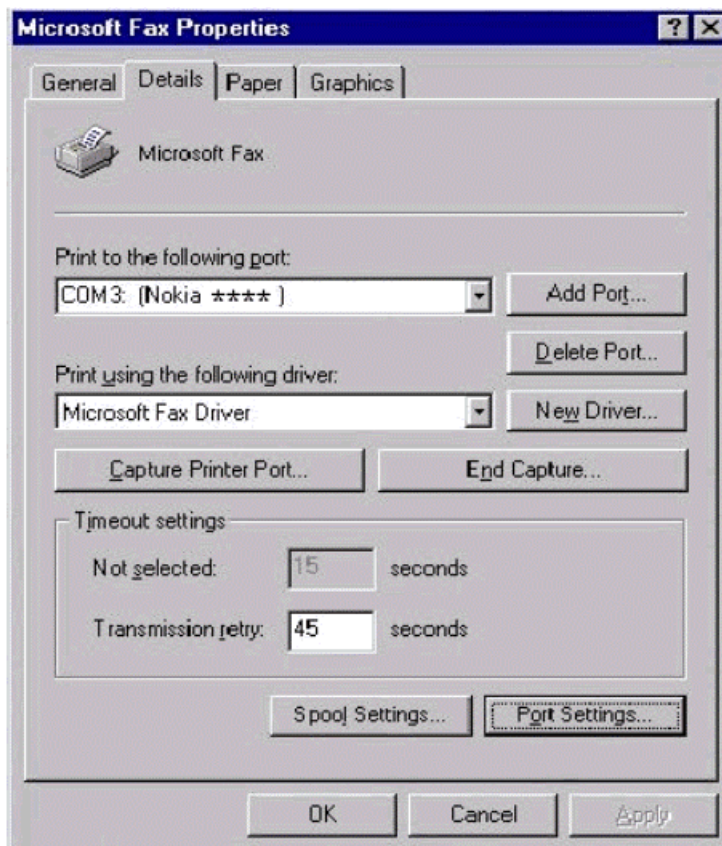


Figure 7. Setting Microsoft Fax as the default printer.

The fax wizard starts automatically when you send a fax. Fill in the recipient's name and fax number. Click 'Add to list'. You may define as many recipients as you want. After that click 'Next' (Figure 8).

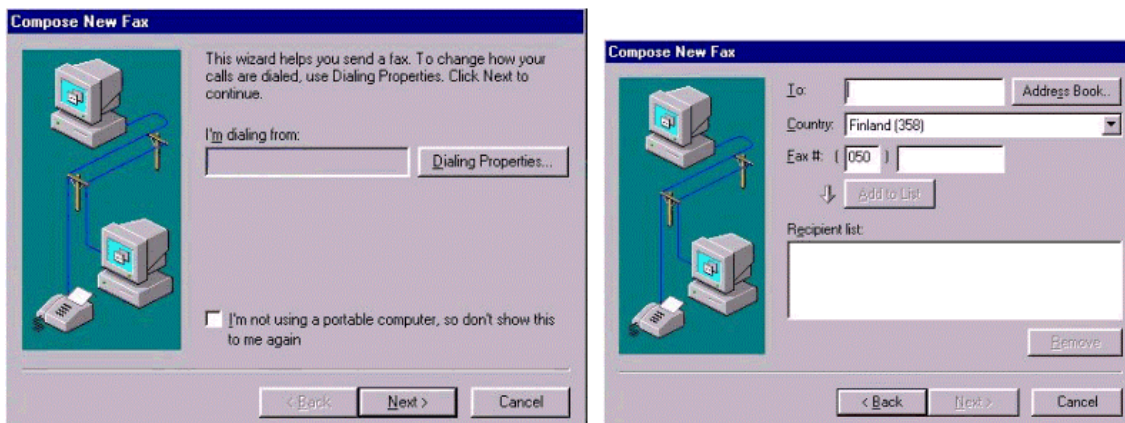


Figure 8. Sending a fax.

You may then select the cover page. After that you may write your message (Figure 9).

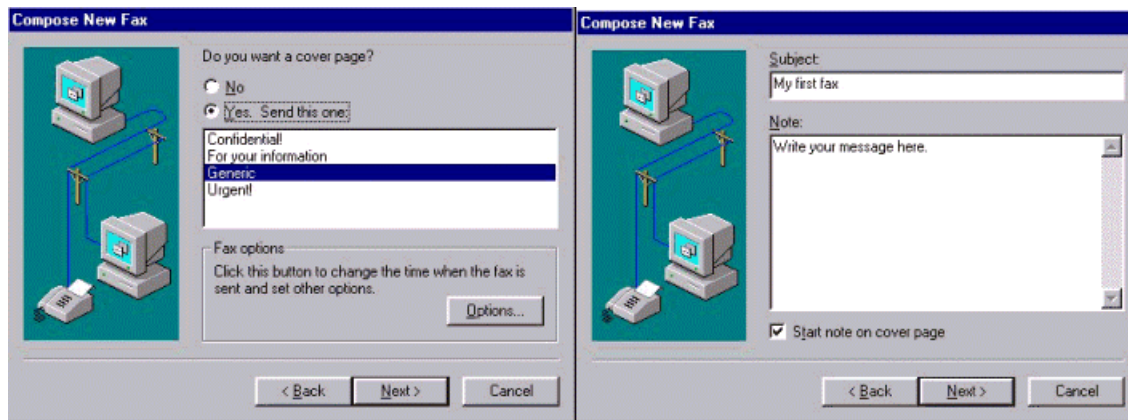
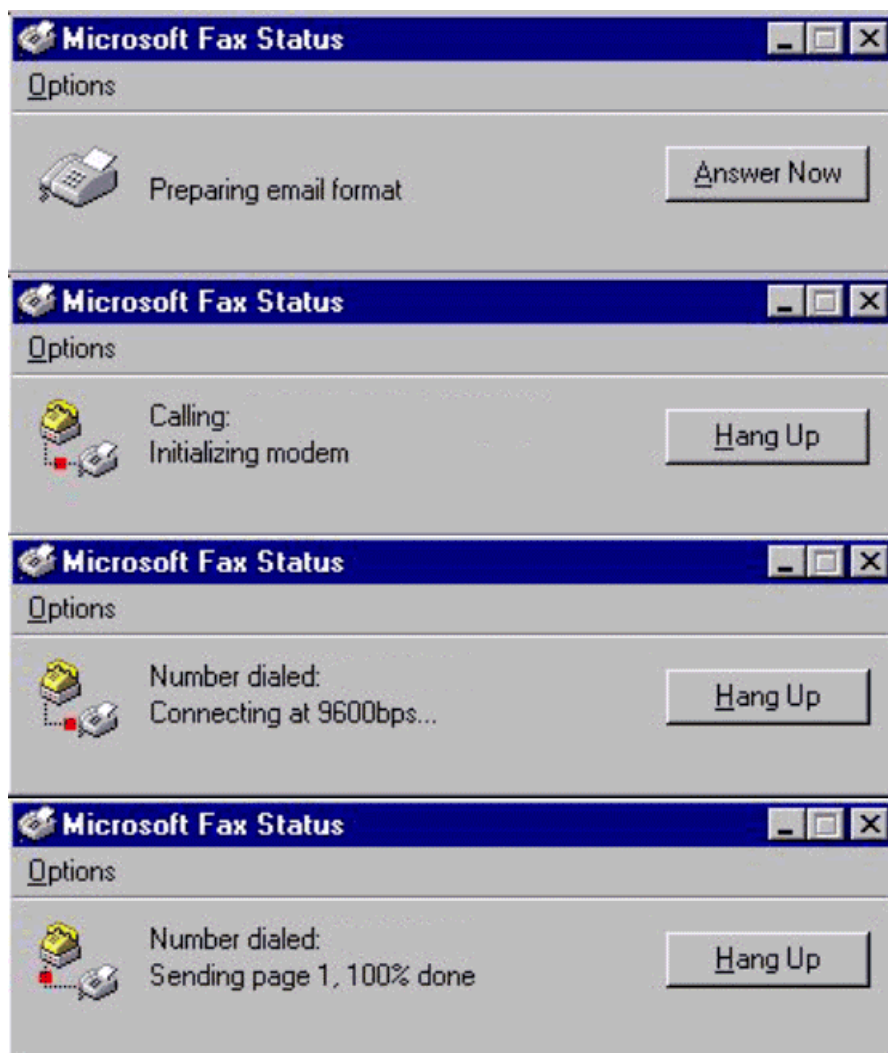


Figure 9. Selecting a cover page and writing a message.

Next you may add a text file to your fax. Now your fax is ready to send. Click the '**Finish**' button.

The progress of the fax transmission will be shown step by step (Figures 10-13).



Figures 10-13. The fax sending process.

Receiving

You must have the 'Answer after # rings' or the 'Manual' answer option on, in the Fax modem properties, if you want to receive a fax (Figure 6). If you have a Card Phone on your computer, if the phone is switched on and in service and if autoanswer is enabled, Microsoft fax will answer incoming fax calls automatically.



Figure 14. Microsoft fax receiving a fax.

LEGAL NOTICE

Copyright © Nokia Mobile Phones 2000. All rights reserved.

Reproduction, transfer, distribution or storage of part or all of the contents of this document in any form without the prior written permission of Nokia is prohibited.

Nokia and Nokia Connecting People are registered trademarks of the Nokia Corporation. Other product and company names mentioned herein may be trademarks or tradenames of their respective owners.

Nokia operates a policy of continuous development. Therefore, we reserve the right to make changes and improvements to any of the products described in this document without prior notice.

Under no circumstances shall Nokia be responsible for any loss of data or income or any special, incidental, consequential or indirect damage howsoever caused.

The contents of this document are provided "as is". Except as required by the applicable law, no warranties of any kind, either express or implied, including, but not limited to, the implied warranties of merchantability and fitness for a particular purpose, are made in relation to the accuracy, reliability or contents of this document. Nokia reserves the right to revise this document or to withdraw it at any time without prior notice.