



This Quick Guide is a generic guide for both Nokia Card Phones (1.0 and 2.0). When you are asked to select the modem you will see *Nokia \*\*\*\**, please select one of the following:

Nokia Card Phone 1.0	Nokia Cellular Card Phone
Nokia Card Phone 2.0	Nokia Card Phone 2.0

## Quick Guide to Using the Nokia Card Phone with Windows NT 4.0 RAS

### 1. Installing and setting up

Proceed as follows:

1. Install the Nokia Card Phone in Windows NT 4.0.
2. Open the Control Panel.
3. Open Network.
4. Click the Services tab (Figure 1).

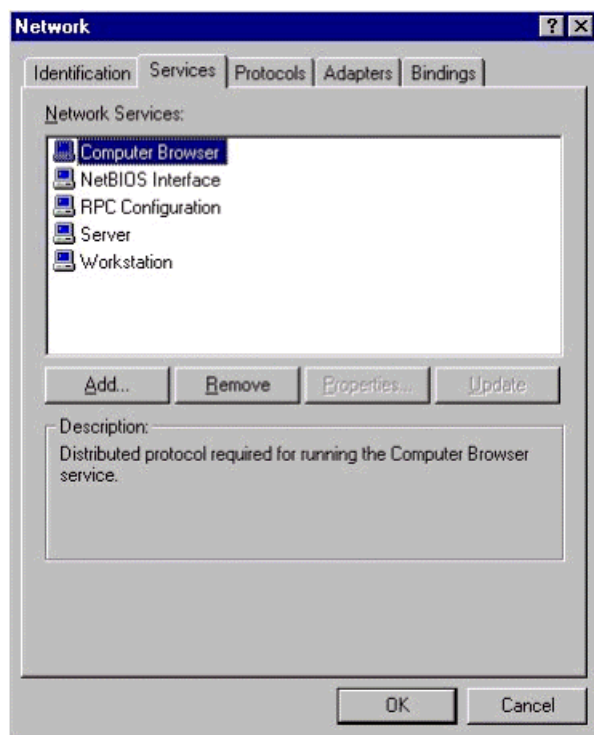


Figure 1. Network Services.

5. Click Add..
6. Select "Remote Access Service", click OK (Figure 2).

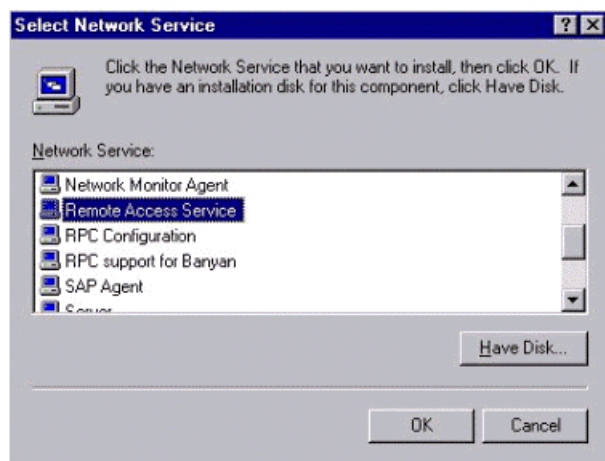


Figure 2. Adding Remote Access Service.

7. Now you should see the 'Add RAS Device' window with the RAS Capable Device: COM2 - Nokia GSM Data 2.0, click OK (Figure 3).

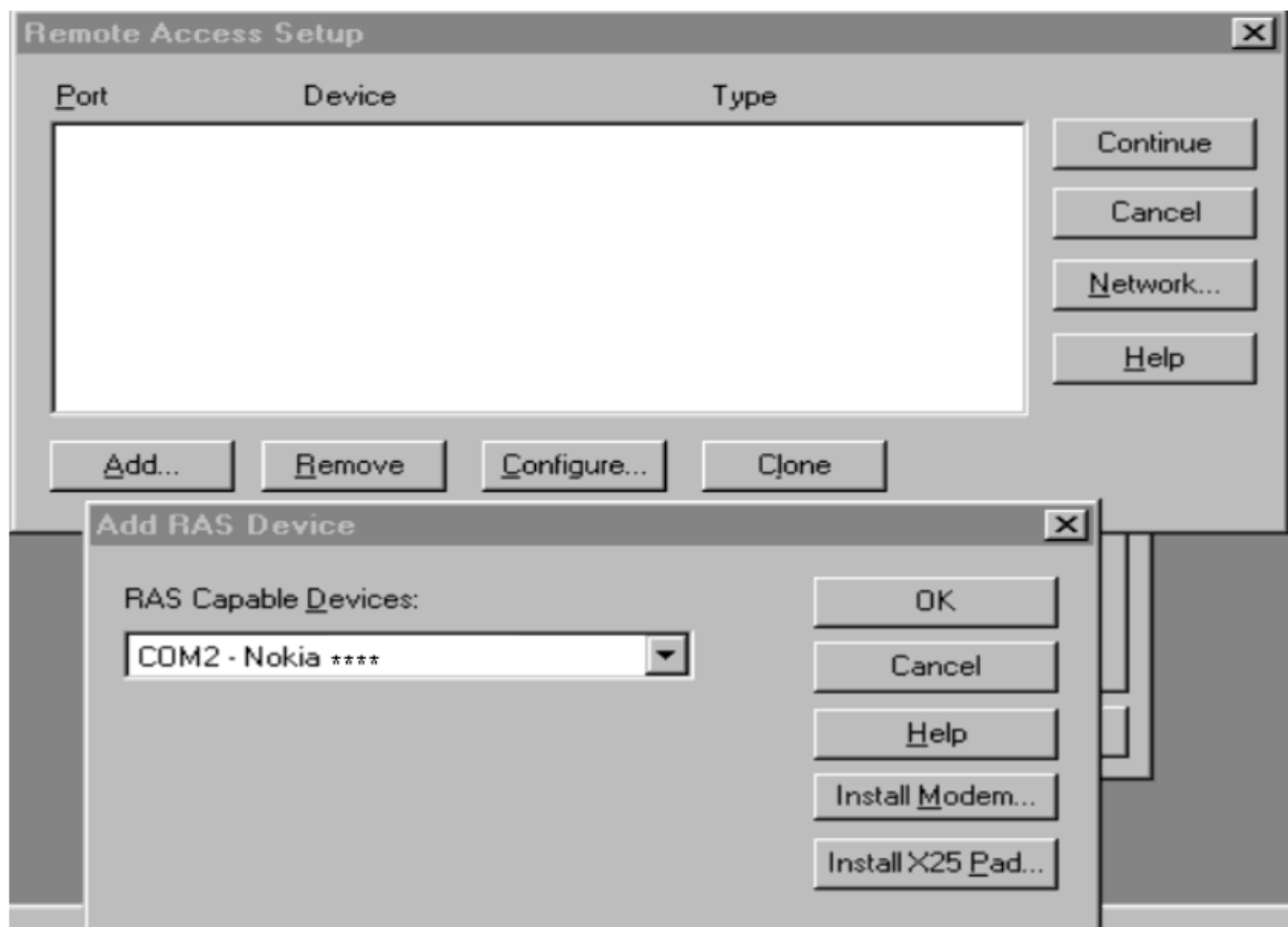


Figure 3. Add RAS Device.

8. Now you can configure port usage (Figure 4).

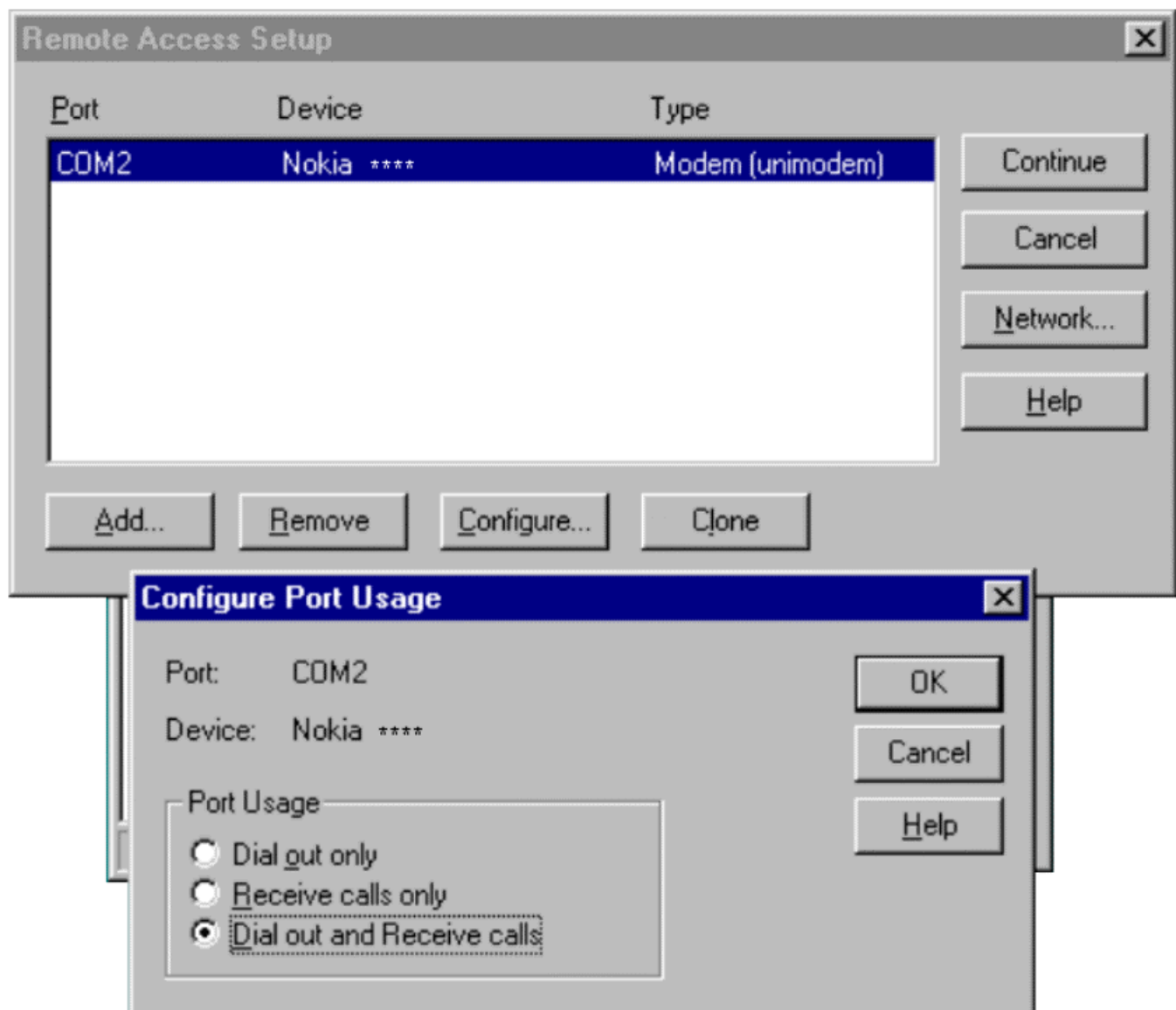


Figure 4. Configure Port Usage.

9. Now you can set up Network Configurations (Figure 5).

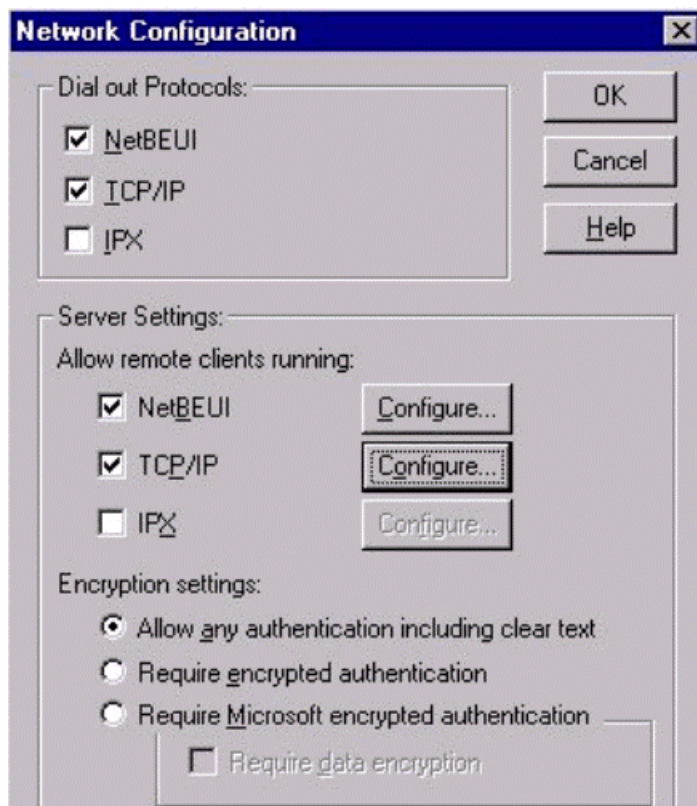


Figure 5. Network Configuration.

10. Your Remote Access Service has now been successfully installed. Use Remote Access Admin or the User Manager in the Administrative Tools folder to assign Remote Access permissions to users.

11. Reboot your computer now.

## 1.1 Making a connection

12. Open the Control Panel, Open Services.
13. Start Remote Access Server (Figure 6).

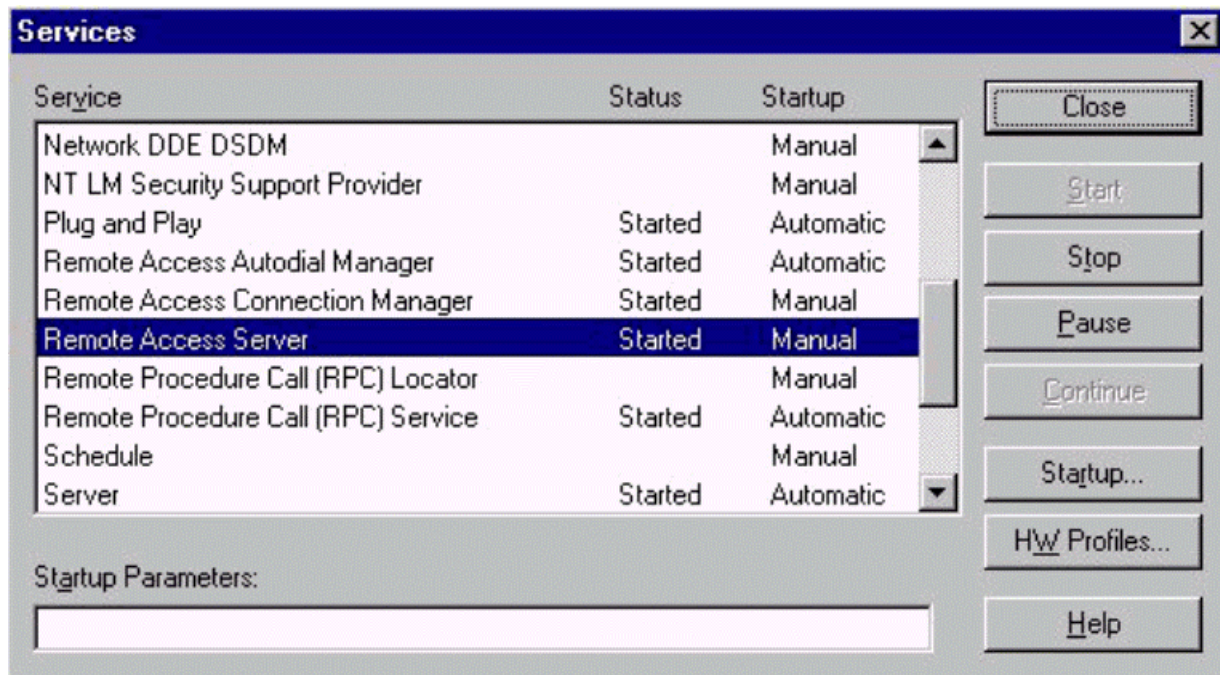


Figure 6. Start Remote Access Service.

Now you can start Remote Access Admin so that you can monitor the Remote Access connection. Click Start, click Programs, click Administrative Tools, click Remote Access Admin (Figure 7).

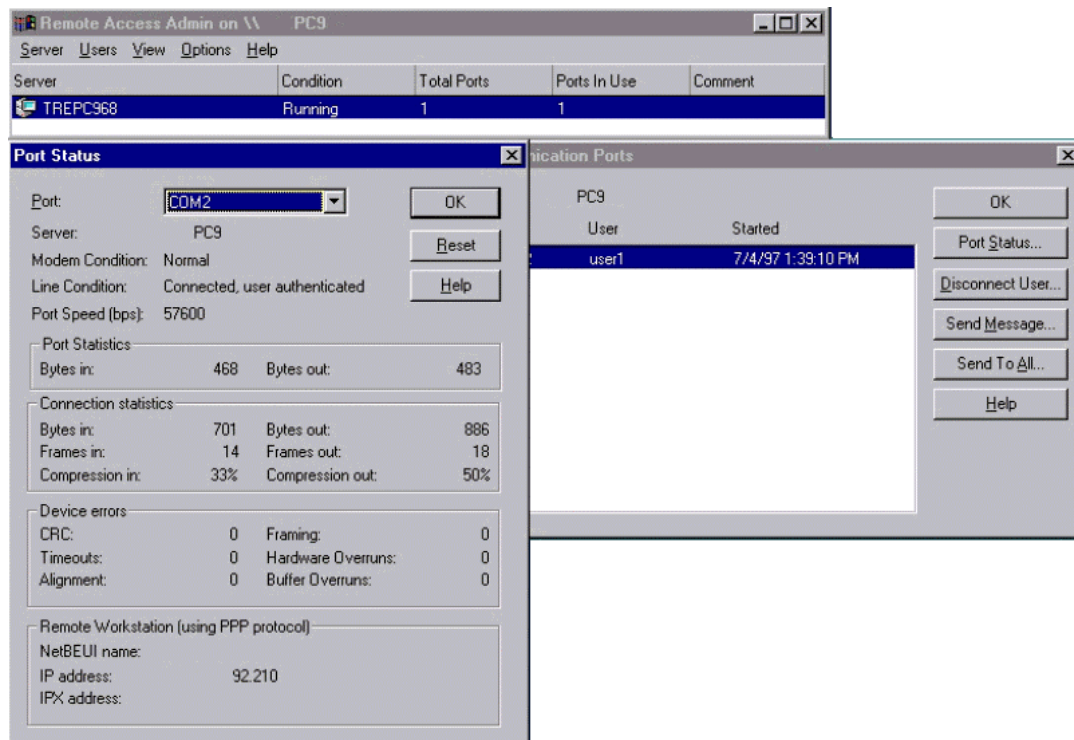


Figure 7. Remote Access Admin Port Status.

## LEGAL NOTICE

Copyright © Nokia Mobile Phones 2000. All rights reserved.

Reproduction, transfer, distribution or storage of part or all of the contents of this document in any form without the prior written permission of Nokia is prohibited.

Nokia and Nokia Connecting People are registered trademarks of the Nokia Corporation. Other product and company names mentioned herein may be trademarks or tradenames of their respective owners.

Nokia operates a policy of continuous development. Therefore, we reserve the right to make changes and improvements to any of the products described in this document without prior notice.

Under no circumstances shall Nokia be responsible for any loss of data or income or any special, incidental, consequential or indirect damage howsoever caused.

The contents of this document are provided "as is". Except as required by the applicable law, no warranties of any kind, either express or implied, including, but not limited to, the implied warranties of merchantability and fitness for a particular purpose, are made in relation to the accuracy, reliability or contents of this document. Nokia reserves the right to revise this document or to withdraw it at any time without prior notice.