

# NOKIA 9200

## Communicator Series



### SUPPORT GUIDE FOR COPYING CONTACTS, CALENDAR AND MESSAGE DATA BETWEEN NOKIA COMMUNICATOR 9200 SERIES DEVICES

**NOKIA**



# Contents

- 1. INTRODUCTION ..... 1
- 2. DATA TRANSFER ..... 1
  - 2.1 ON SOURCE COMMUNICATOR ..... 1
    - 2.1.1 COPYING CONTACTS ..... 1
    - 2.1.2 COPYING CALENDAR ..... 3
    - 2.1.3 MESSAGE DATA ..... 4
  - 2.2 ON DESTINATION COMMUNICATOR ..... 5
    - 2.2.1 COPYING CONTACTS TO THE DESTINATION COMMUNICATOR..... 5
    - 2.2.2 COPYING CALENDAR ..... 6
    - 2.2.3 MESSAGE DATA ..... 7

**Legal Notice**

Copyright © Nokia 2002. All rights reserved.

Reproduction, transfer, distribution or storage of part or all of the contents in this document in any form without the prior written permission of Nokia is prohibited.

Nokia and Nokia Connecting People are registered trademarks of Nokia. Other product and company names mentioned herein may be trademarks or tradenames of their respective owners.

Nokia operates a policy of continuous development. Nokia reserves the right to make changes and improvements to any of the products described in this document without prior notice.

Under no circumstances shall Nokia be responsible for any loss of data or income or any special, incidental, consequential or indirect damages howsoever caused.

The contents of this document are provided "as is". Except as required by applicable law, no warranties of any kind, either express or implied, including, but not limited to, the implied warranties of merchantability and fitness for a particular purpose, are made in relation to the accuracy, reliability or contents of this document. Nokia reserves the right to revise this document or withdraw it at any time without prior notice.



## 1. INTRODUCTION

---

The purpose of this document is help you to transfer calendar, contacts and message data information between Nokia Communicator 9200 Series devices. The instructions here exclude the Nokia 9210c Communicator.



**Note:** Do not use other Communicator model's memory card in other Communicator model without formatting it first e.g Nokia 9210 Communicator's memory card in the Nokia 9290 Communicator. However you can use memory card temporarily for copying your files between Nokia Communicator 9200 Series devices but we recommend that you reboot the Communicator after the original memory card is reinserted.

**Note:** Formatting the memory card deletes all the data on it, including Contact database, Calendar database and Message storage.



**Warning:** It is not recommended to restore backup from one Communicator model to another e.g. Nokia 9210 Communicator back up to Nokia 9290 Communicator.

## 2. DATA TRANSFER

---

### 2.1 ON SOURCE COMMUNICATOR

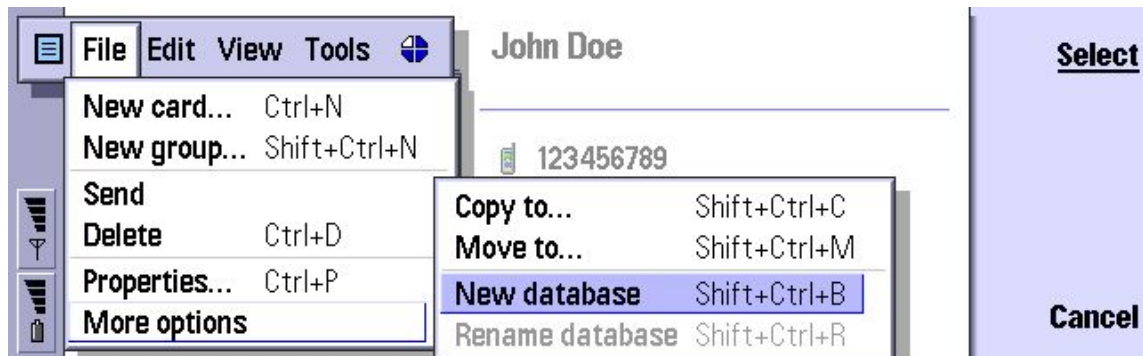
(The communicator where you want to copy the data from)  
Insert source memory card to source Communicator

#### 2.1.1 Copying contacts

(If the contacts database is already on the memory card go to step 2.1.2)

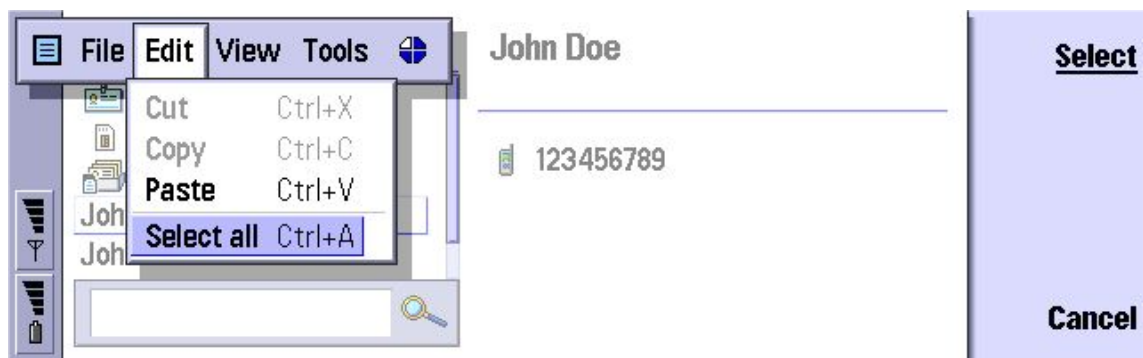
1. Open Contacts application.
2. If you have SIM card memory currently open, press **Close**.

3. In **File** menu select **More options** and then **New database**.

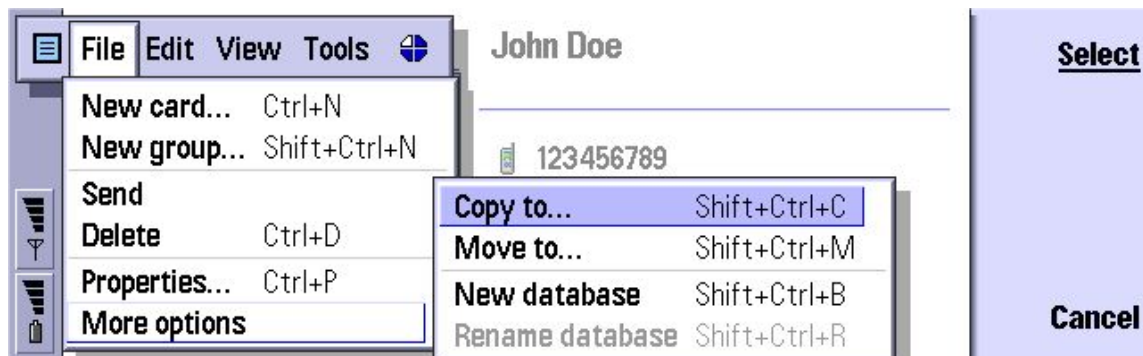


4. Write a name (e.g. Temporary) for temporary contacts database and press **OK**.

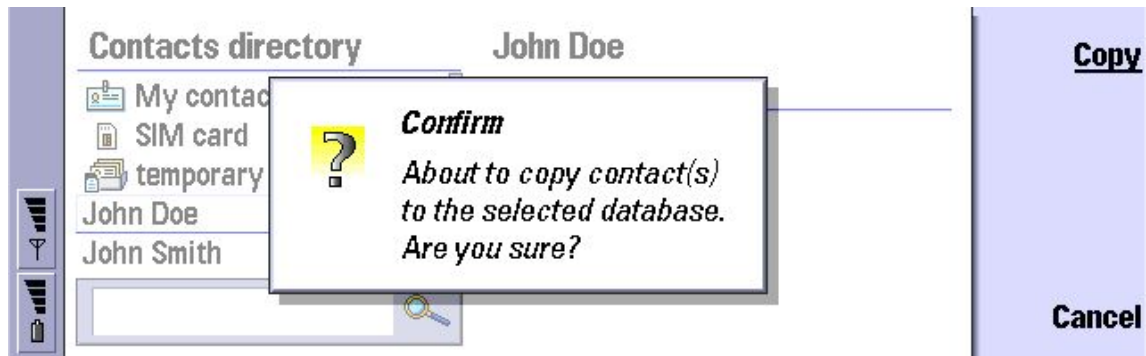
5. In **Edit** menu select **Select all**.



6. In **File** menu select **More options** and then **Copy to** and select the temporary database.



7. In Confirm dialog press **Copy**.



### 2.1.2 Copying calendar

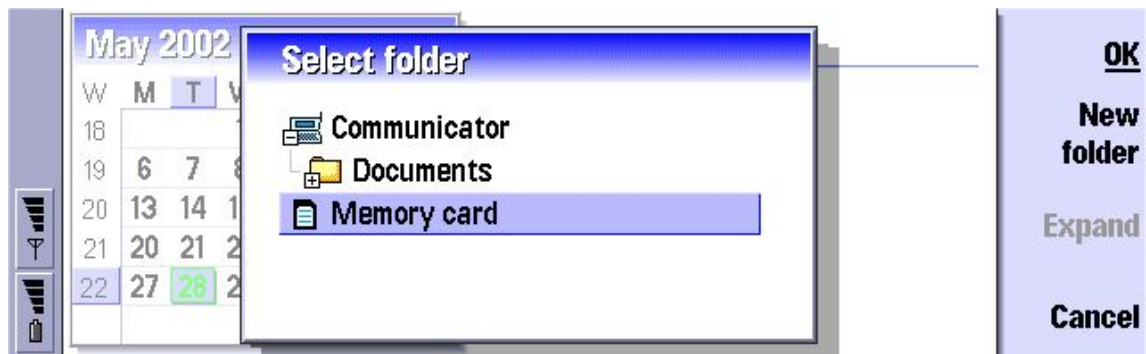
(If the calendar is on memory card go to step 2.1.3)

1. Open Calendar application.

2. In **File** menu select **More options** and then **Save as**.



3. In **Save as** dialog select **Browse** and go to the memory card and press **OK**.



4. Enter a name (e.g. Temporary) for temporary calendar and press **OK**.
5. Press **Close** to close the temporary calendar.

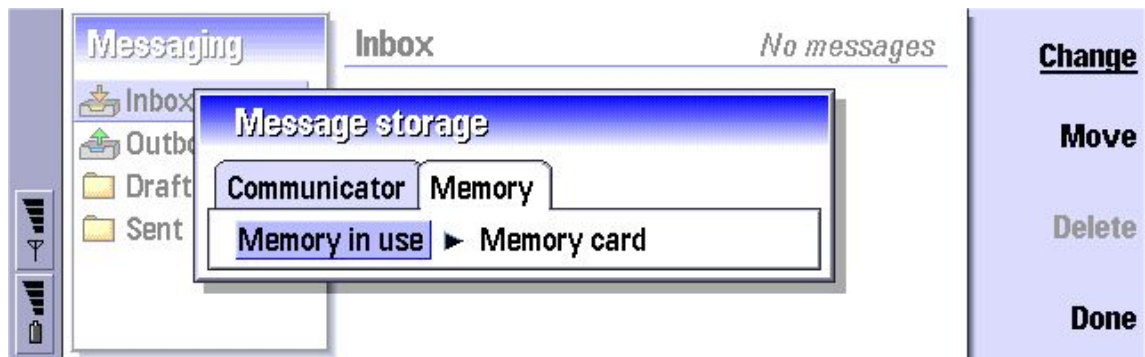
### 2.1.3 Message data

(If the message storage is on memory card go to section **On destination Communicator**)

1. Open Messaging application.
2. In **Tools** select **Message storage**.



3. In **Memory in use**, select **Memory card** and then press **Move**.



**Note:** If you cannot select **Move**, this means that you already have an old message storage on your memory card, which you should delete first. To do this select **Memory card** in **Memory in use** and press **Delete**. Now, it is possible move the new Message storage to the Memory card.



**Warning:** If you delete the Message storage you should be sure that you delete the right one, as this function deletes all messages in the Message storage and this operation is irreversible.

## 2.2 ON DESTINATION COMMUNICATOR

(The communicator where you want to copy the data)

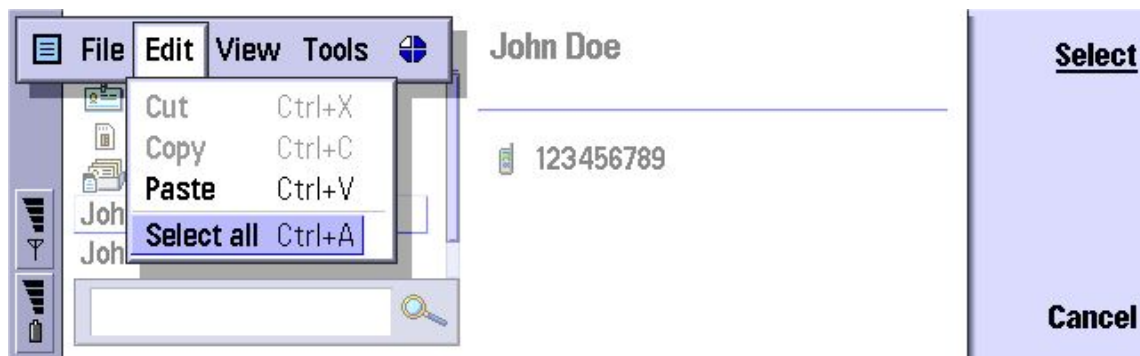
Remove the source memory card from source Communicator and insert it to the destination Communicator.

### 2.2.1 Copying contacts to the Destination communicator

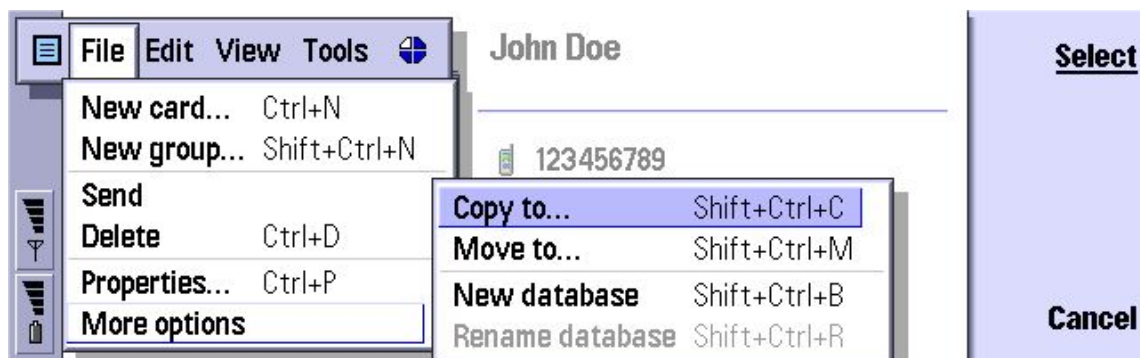


**Note:** Duplicate contacts will be created if the same contact already exists on the destination Communicator. These duplicate contact cards can be deleted manually afterwards.

1. Open Contacts application.
2. Select the contacts database on memory card and press **Open**.
3. In **Edit** menu select **Select all**.

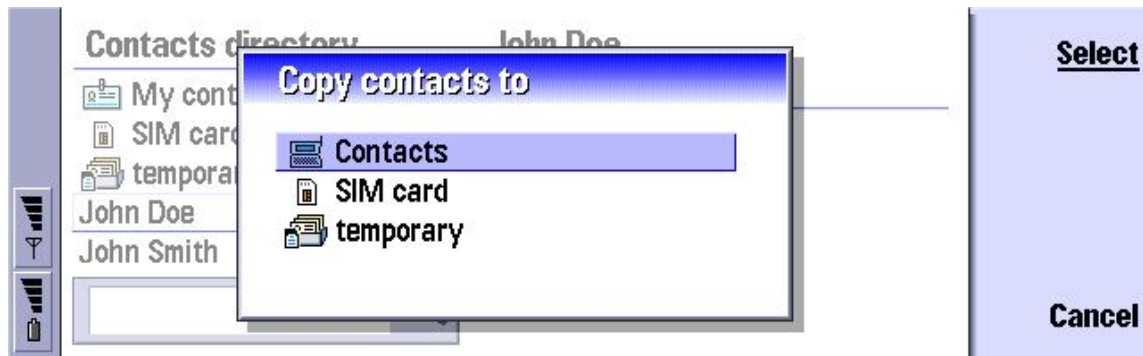


4. In File menu select **More options** and then **Copy to**.





5. In **Copy contacts to** dialog select **Contacts** and press **Select**.



6. In Confirm dialog press **Copy**.

7. Press **Close** to close the contacts database on memory card.

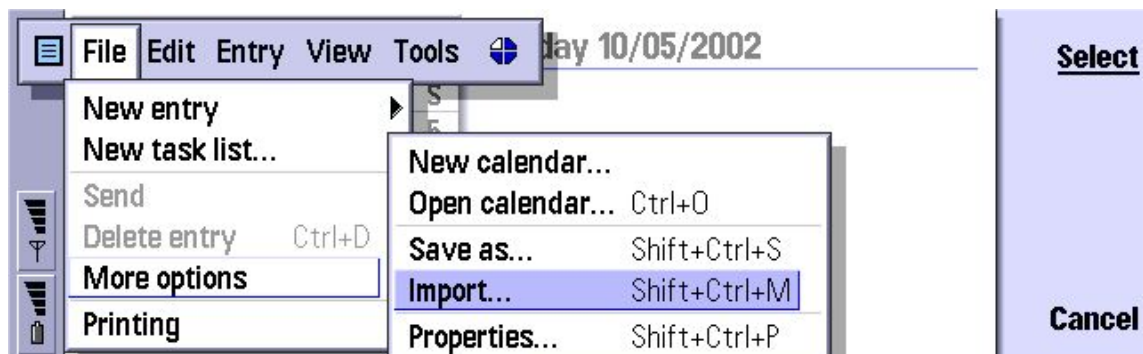
### 2.2.2 Copying calendar



**Note:** Duplicate calendar items may be created if the item already exists in Communicator calendar

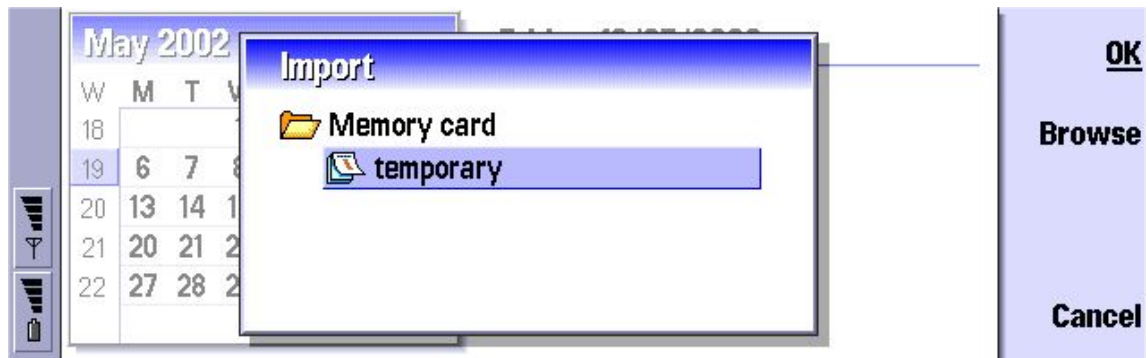
1. Open Calendar application.

2. In **File** menu select **More options** and then **Import**.





3. In **Import** dialog press **Browse** and then select memory card and press **OK**.  
Select calendar database and press **OK**.

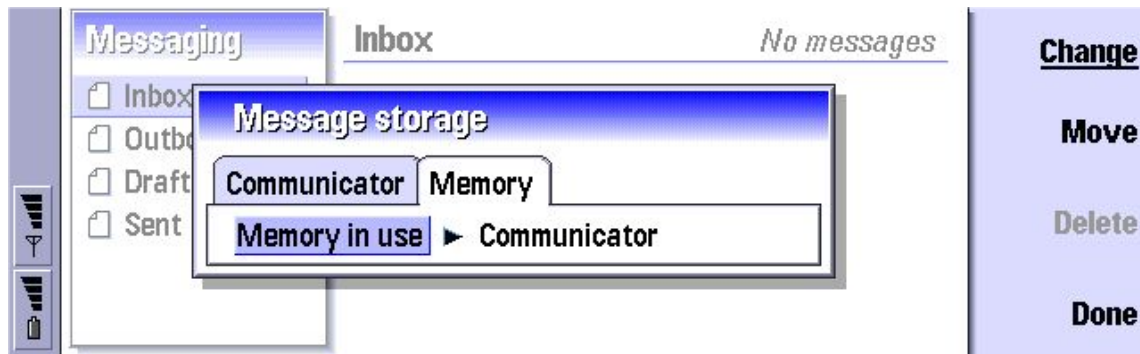


### 2.2.3 MESSAGE DATA

1. Open Messaging application
2. In **Tools** select **Message storage**.



3. Select **Communicator** in Memory in use and then press **Move**.



**Note:** If you cannot select **Move**, this means that you already have an old message storage on your communicator, which you should delete first. To do this Select **Communicator** in **Memory in use** and press **Delete**. Now, it is possible move the new Message storage to the communicator.



**Warning:** If you delete the Message storage you should be sure that you delete the right one, as this function deletes all messages in the Message storage and this operation is irreversible.

Remove source memory card and insert destination memory card to destination Communicator.