



This document is a generic guide for all Nokia Data Suites. When you are asked to select the modem you will see *Nokia \*\*\*\**, please select one of the following:

Nokia Data Suite 1.0	Nokia GSM Data-Fax
Nokia Data Suite 1.2	Nokia GSM Data-Fax
Nokia Data Suite 2.0	Nokia GSM Data 2.0
Nokia Data Suite 3.0	Nokia GSM Data 3.0

## Quick Guide to Using the Nokia Data Suite with Carbon Copy 5.0

### SETTING UP YOUR NOKIA DATA SUITE TO WORK WITH CARBON COPY 5.0 AS A FAXMODEM

If you haven't yet installed Carbon Copy 5.0 please do so before continuing and check that you have the Nokia Data Suite installed and that it works.

1. Connect your Nokia Phone via a cable to the computer and start Carbon Copy 5.0
2. Now go to **Options – Communications** and select the **appropriate modem** as one of your connection types, so that you are able to receive data calls from another computer using Carbon Copy (Figure 1).

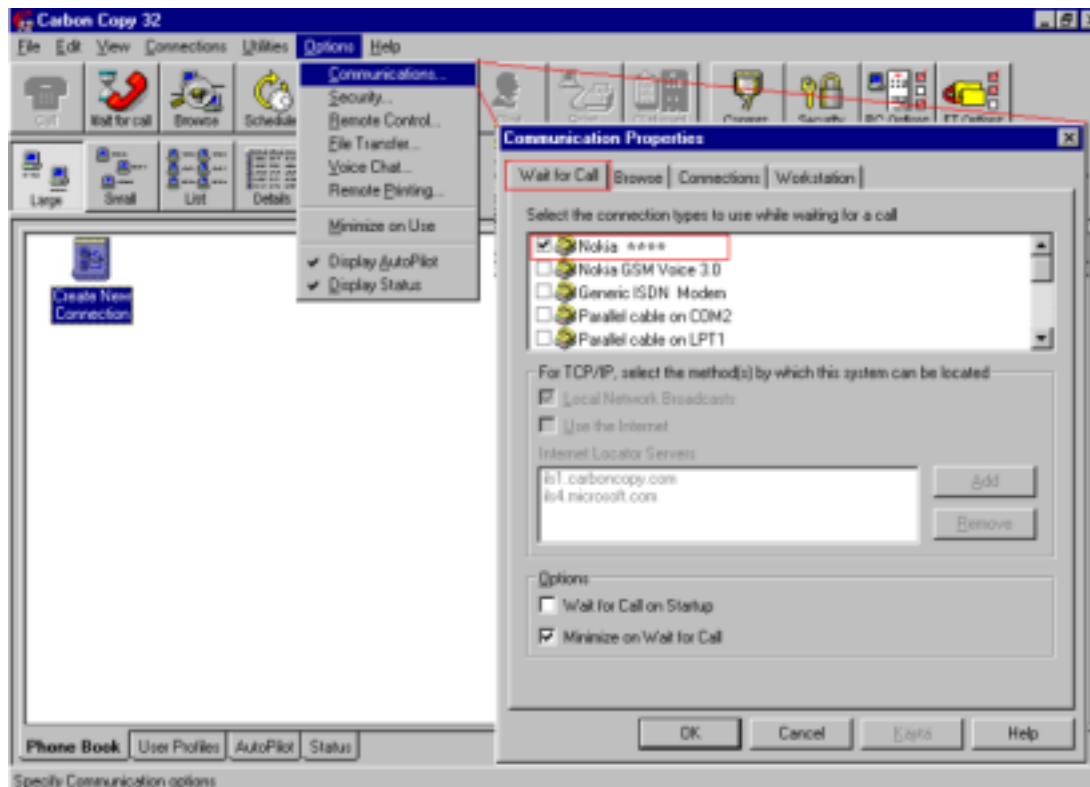


Figure 1: Accessing the program's setup and selecting the appropriate modem.

3. Double-click on **Create New Connection**, click to select the connection type that you will be using and after that click on **Next** (Figure 2).

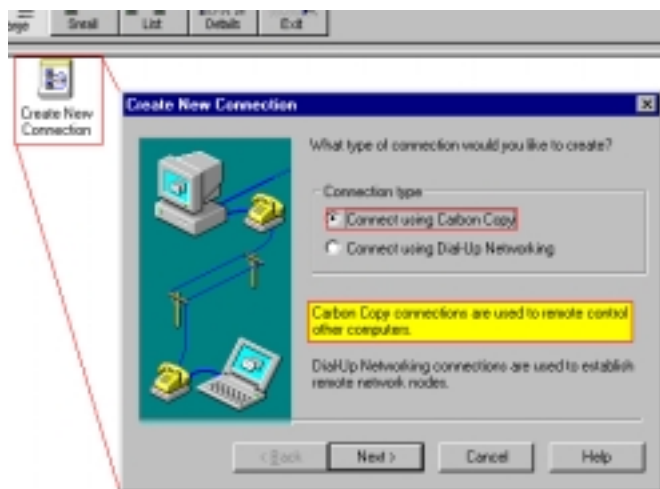


Figure 2: Creating a new connection.

4. Now Carbon Copy will configure your Data Suite to work as a faxmodem. First click **Yes** then **Next** and wait until Winfax has tested your modem and after that click **Next** (Figure 3).

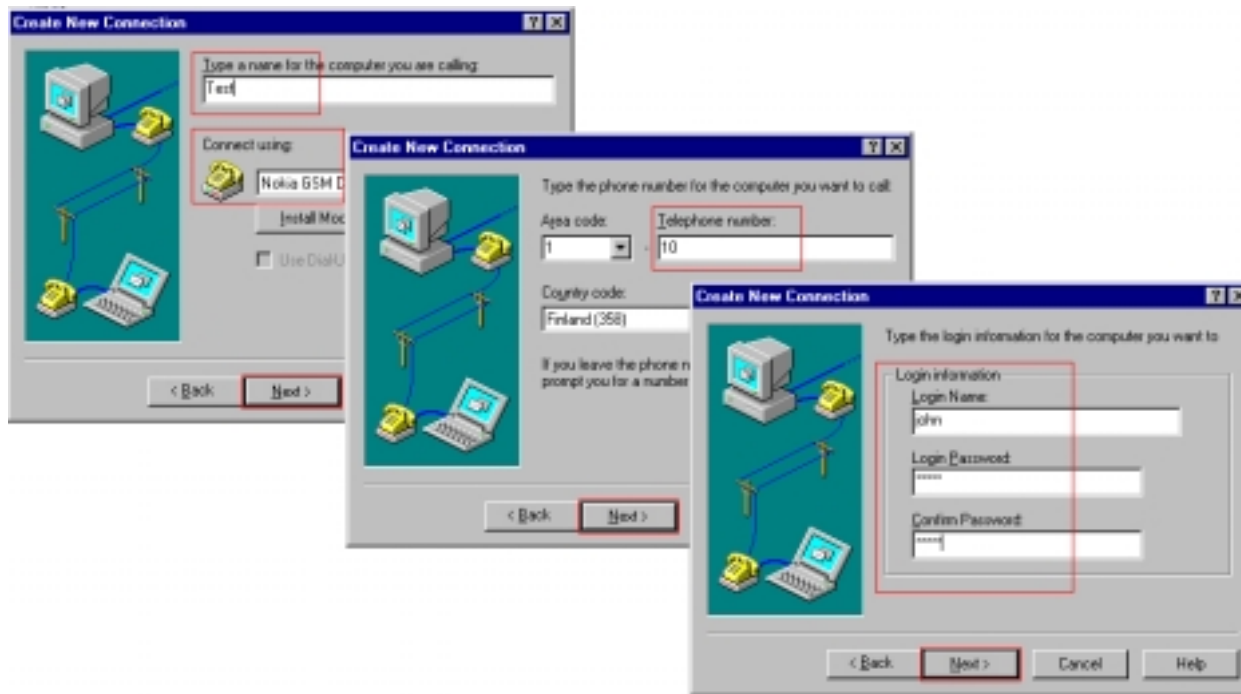


Figure 3: The first three steps to creating a new connection.

7. The last two steps to finalize your new connection are as follows: in the first dialog box you are asked to select the utilities to be started when the connection to the remote computer is established and in the last one just click on **Finish** (Figure 4).

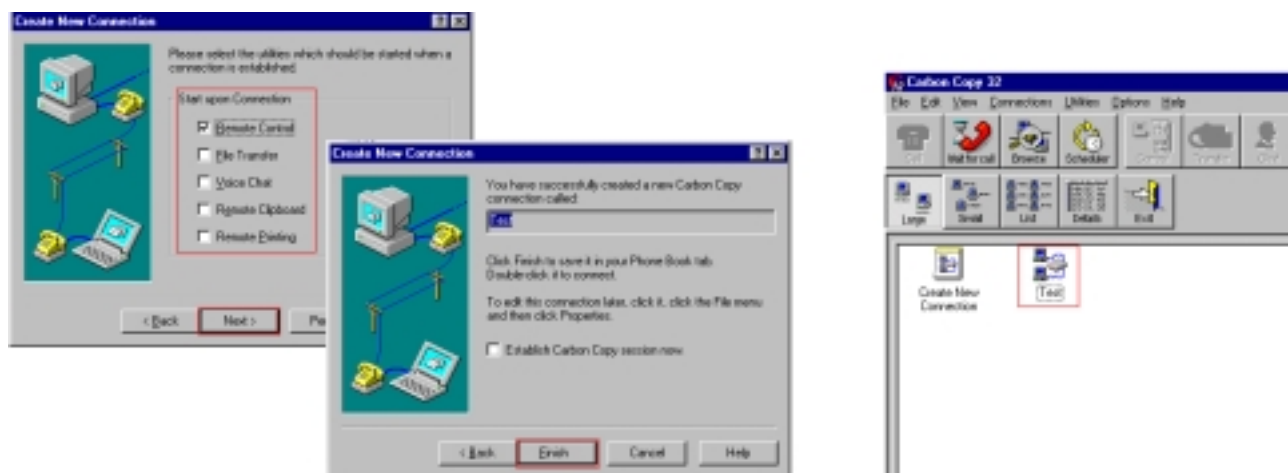


Figure 4: The two last steps to be followed to get a new connection ready for use.

8. To test your new connection just double-click on its icon and check that **Login Information** and **Connection Information** are correct. After you have checked these, you can click **Connect** and you should get a dialogue box similar to that shown in the Figure 5.

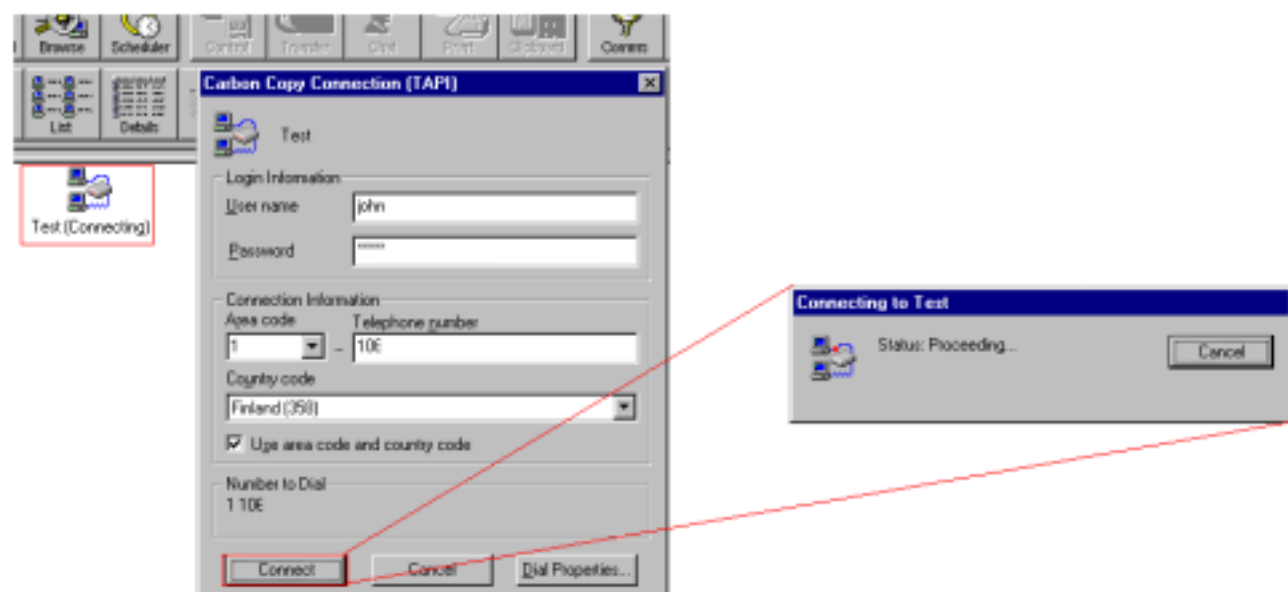


Figure 5: Making your first data call using Carbon Copy 5 and the Nokia Data Suite.

## LEGAL NOTICE

Copyright © Nokia Mobile Phones 1999. All rights reserved.

Reproduction, transfer, distribution or storage of part or all of the contents of this document in any form without the prior written permission of Nokia is prohibited.

Nokia and Nokia Connecting People are registered trademarks of the Nokia Corporation. Other product and company names mentioned herein may be trademarks or tradenames of their respective owners.

Nokia operates a policy of continuous development. Therefore, we reserve the right to make changes and improvements to any of the products described in this document without prior notice.

Under no circumstances shall Nokia be responsible for any loss of data or income or any special, incidental, consequential or indirect damage howsoever caused.

The contents of this document are provided "as is". Except as required by the applicable law, no warranties of any kind, either express or implied, including, but not limited to, the implied warranties of merchantability and fitness for a particular purpose, are made in relation to the accuracy, reliability or contents of this document. Nokia reserves the right to revise this document or to withdraw it at any time without prior notice.