



This Quick Guide is a generic document for all versions of Nokia Data Suite. When you are asked to select the modem you will see **Nokia \*\*\*\***, please select one of the following:

Nokia Data Suite 1.0	Nokia GSM Data-Fax
Nokia Data Suite 1.2	Nokia GSM Data-Fax
Nokia Data Suite 2.0	Nokia GSM Data 2.0
Nokia Data Suite 3.0	Nokia GSM Data 3.0

## Quick Guide to Using the Nokia Data Suite with Winfax Pro 9

### SETTING UP YOUR WINFAX PRO 9 TO SEND AND RECEIVE FAXES WITH THE NOKIA DATA SUITE

If you haven't yet installed Winfax Pro 9.0x on your PC, please do so before continuing and also check that you have the Nokia Data Suite installed and that it works. If you want to automatically receive faxes you must have your cellular phone connected via cable to your computer during boot-up because Winfax Pro checks if there is a phone connected and enables automatic receive; otherwise you have to manually pick up incoming fax calls.

1. Connect your phone to your computer using a cable and start Winfax Pro 9.0x.
2. Go to **Tools – Setup – Program Setup** (Figure 1).

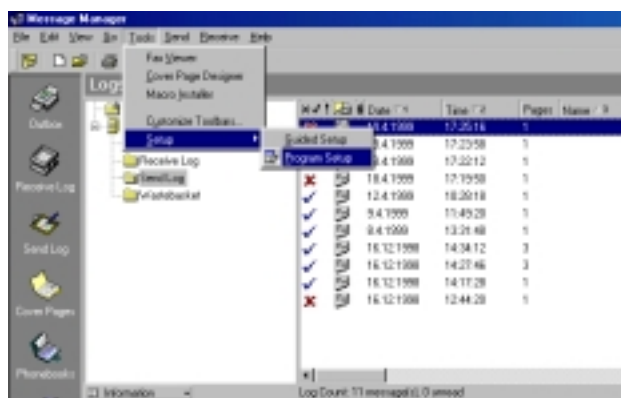


Figure 1: Accessing program setup dialog.

3. Click once on **Modems and Other Fax Devices** and then click the **Properties** button. Select the **Nokia Data Suite** as your Connection device from the **Connection Device** list by ticking the box on the right. (Figure 2).

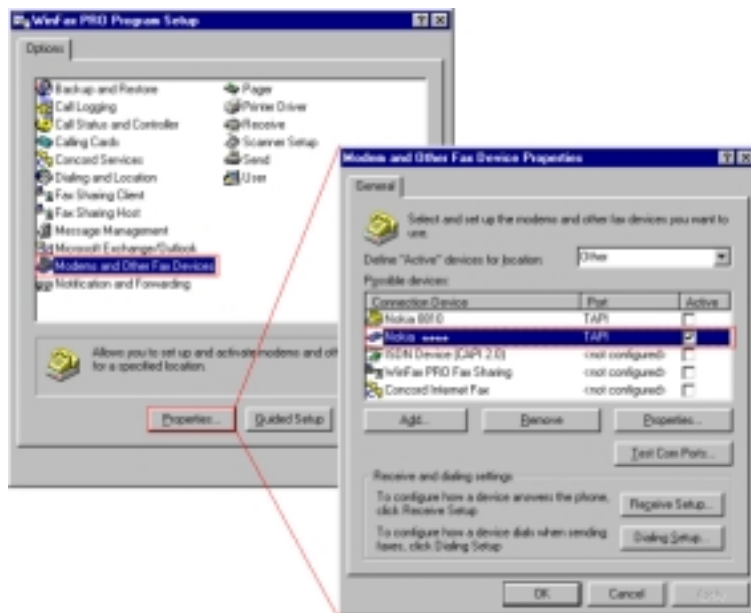


Figure 2: Adding a new modem in Winfax Pro 9.0x.

4. Winfax Pro 9.0x will now configure your Nokia Data Suite to work as a faxmodem. First click the **Yes** button and then click the **Next** button; now wait until Winfax has tested your modem. After that click the **Next** button (Figure 3).

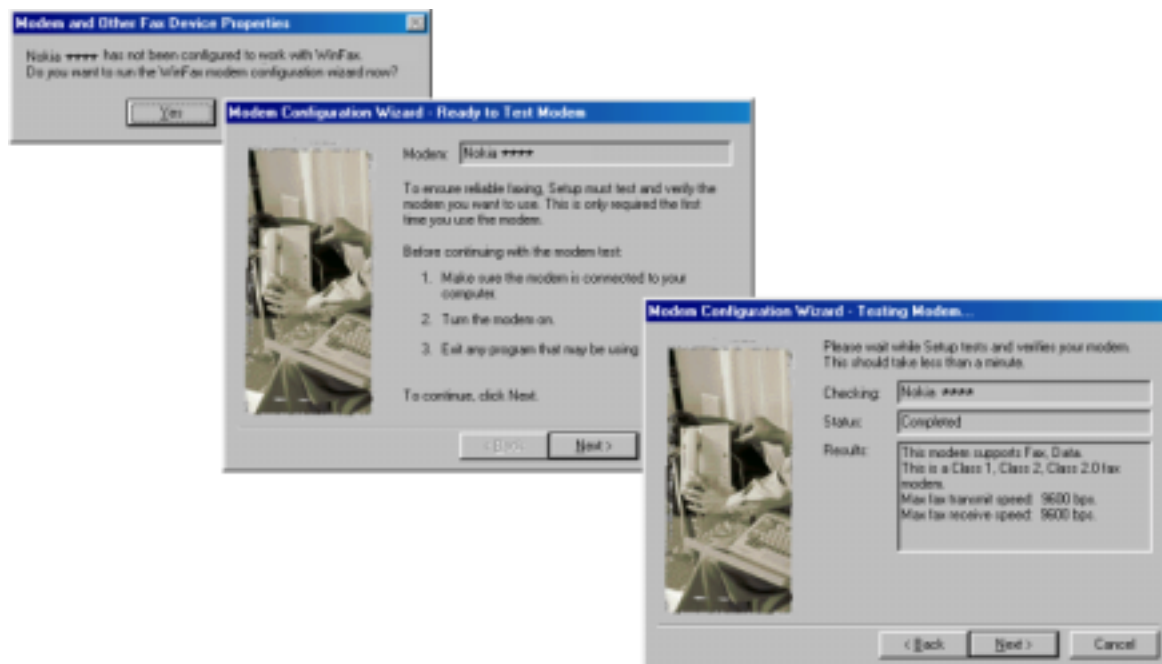


Figure 3: Three steps to configure your modem.

5. After you have successfully configured your modem click the **Finish** button. When the program asks you to select the locations for your new modem just accept the default options by clicking the **OK** button (Figure 4).

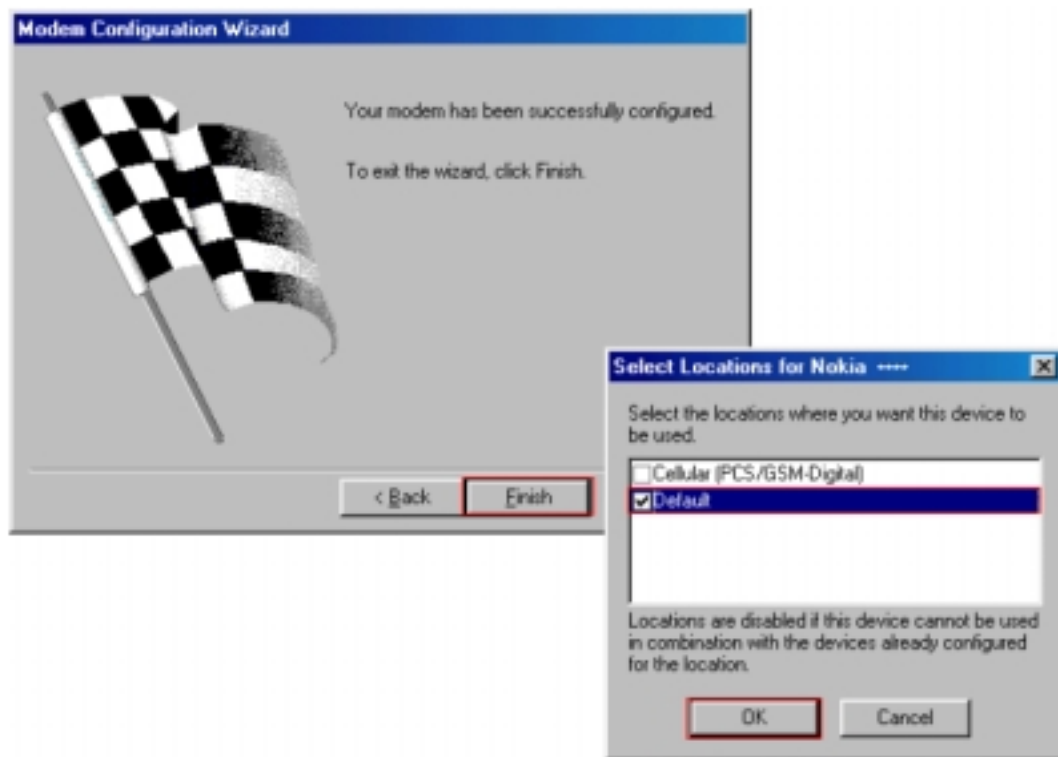


Figure 4: Finishing the modem setup and selecting the locations.

6. Click the **Yes** button and check that you have similar settings in the Dialing Properties window as those displayed in the figure below (Figure 5). **Please Note:** Ensure that in **General – Dialing** the **Detect busy tone** or the **Detect dialtone** has NOT been selected.

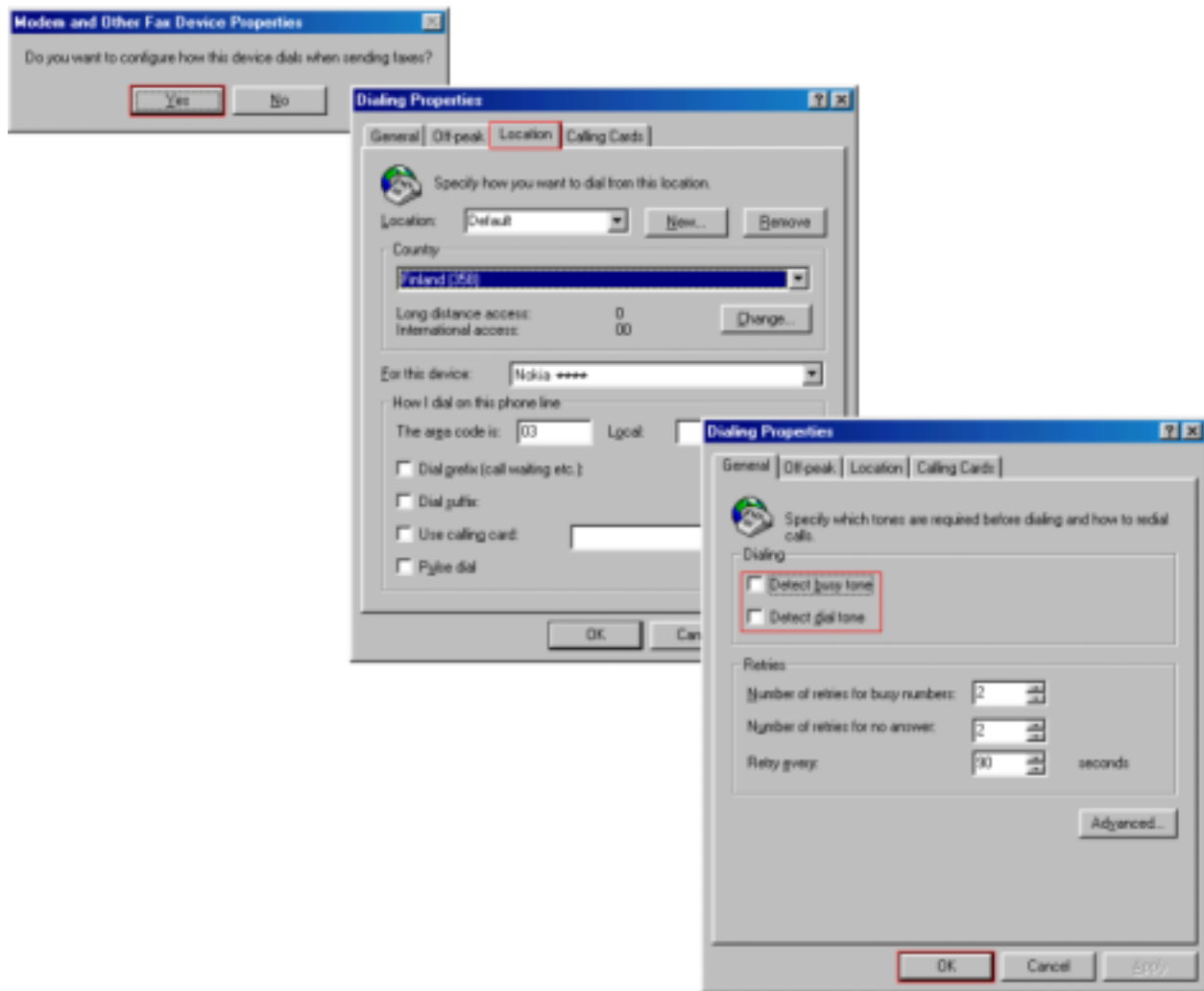


Figure 5: Specifying dialing properties.

**Please Note:** If fax sending fails, change the fax class from **Tools – Setup – Program Setup**. Go to the **Options Modems and Other Fax Devices** and select the **Nokia Data Suite** from the **Connection Device** list. Then click on the **Properties** button and the Properties box for Nokia Data Suite will appear on the screen. Now you can change the **Modem type** to something else.

#### LEGAL NOTICE

Copyright © Nokia Mobile Phones 1999. All rights reserved.

Reproduction, transfer, distribution or storage of part or all of the contents of this document in any form without the prior written permission of Nokia is prohibited.

Nokia and Nokia Connecting People are registered trademarks of the Nokia Corporation. Other product and company names mentioned herein may be trademarks or tradenames of their respective owners.

Nokia operates a policy of continuous development. Therefore, we reserve the right to make changes and improvements to any of the products described in this document without prior notice.

Under no circumstances shall Nokia be responsible for any loss of data or income or any special, incidental, consequential or indirect damage howsoever caused.

The contents of this document are provided "as is". Except as required by the applicable law, no warranties of any kind, either express or implied, including, but not limited to, the implied warranties of merchantability and fitness for a particular purpose, are made in relation to the accuracy, reliability or contents of this document. Nokia reserves the right to revise this document or to withdraw it at any time without prior notice.