

NOKIA

MUSIC PLAYER

Read this manual before installing software!



- Digital music player, FM radio and Hands-free Switching with voice dialing, and Music Call—all in one
- Nokia Audio Manager software with **Internet connection**
- Easy to use Nokia CD Manager software (for basic use)
- Self powered—can be used with or without a Nokia mobile phone
- Compatible with Nokia 3310, 3330, 8210, 8850, and 8890 mobile phones. (See pictures.)

Declaration of conformity

We, NOKIA MOBILE PHONES Ltd declare under our sole responsibility that the product NOKIA MUSIC PLAYER, HDR-1 is in conformity with the provisions of the following Council Directive: 89/336/EC and 1999/5/EC.

Copyright © Nokia Mobile Phones 2001. All rights reserved.

Reproduction, transfer, distribution or storage of part or all of the contents in this document in any form without the prior written permission of Nokia is prohibited.

Nokia and Nokia Connecting People are registered trademarks of Nokia Corporation. Other product and company names mentioned herein may be trademarks or tradenames of their respective owners.

Nokia operates a policy of continuous development. Nokia reserves the right to make changes and improvements to any of the products described in this document without prior notice.

Under no circumstances shall Nokia be responsible for any loss of data or income or any special, incidental, consequential or indirect damages howsoever caused.

The contents of this document are provided “as is”. Except as required by applicable law, no warranties of any kind, either express or implied, including, but not limited to, the implied warranties of merchantability and fitness for a particular purpose, are made in relation to the accuracy, reliability or contents of this document. Nokia reserves the right to revise this document or withdraw it at any time without prior notice.

Music is copyright protected in international treaties and national copyright laws. It may be necessary to obtain permission or a license to reproduce or copy music. In some countries national law prohibits private copying of copyrighted material. Please check the national legislation of the applicable country concerning the use of such material.

The availability of particular products may vary by region. Please check with the Nokia dealer nearest to you.

Contents 1 of 3

Declaration of conformity	2
--	----------

Introduction	6
---------------------------	----------

For your safety	6
Uses of your Nokia Music Player	8
Contents of the sales package	9
Your Nokia Music Player diagram	10

Software choices	11
-------------------------------	-----------

Nokia CD Manager	11
Nokia Audio Manager	11

Getting and listening to music	12
---	-----------

Quick & Easy	13
-------------------------------	-----------

Nokia CD Manager	13
Nokia Audio Manager	14
Nokia Music Player	16
FM radio	17
Hands-free headset	18

Install Nokia Audio Manager	19
--	-----------

Installation	19
Install error	20
Uninstall Nokia Audio Manager	20

Install Nokia CD Manager	21
---------------------------------------	-----------

Installation	21
Install error	24

Uninstall Nokia CD Manager	24
----------------------------------	----

Nokia Music Player – Getting started	25
--	-----------

Installing the battery	25
Attach the headphone cable	27
Inserting the memory card	27
Removing the memory card	29
How to wear your Nokia Music Player	31

Connecting to your personal computer... 35

Nokia Audio Manager	37
----------------------------------	-----------

Usage	37
Managing your music	37
Starting Nokia Audio Manager	38
PC operation shortcuts	40
Help – Where to go from here?	41

Step 1. Playback from a CD	42
---	-----------

Play a CD	42
Using the Small Player	46

Step 2. How to read CDs	47
--------------------------------------	-----------

Adding tracks from CDs	47
------------------------------	----

Step 3. Working with the database.....	51
---	-----------

Add tracks from the Internet	51
Making a custom playlist	53

Contents 2 of 3

Step 4. Transferring music to your memory card.....	55
Step 5. Backup music and restore	58
Nokia CD Manager	59
Getting and listening to music overview.....	59
Help – Where to go from here?	60
Step 1. Get music.....	63
Step 2. Read a CD	64
Step 3. Rename tracks.....	65
Step 4. Copy to player and listen to music.....	66
Step 5. Using menus	67
Media on PC – Right click.....	67
Media on Device – Right click.....	69
Step 6. Backup music and restore	71
Nokia Music Player – Memory card playback	72
Memory card playback controls.....	72
Selecting a track to play	75
Scanning tracks	76
Selecting playback options	76
Selecting playback tone	78
Button lock.....	80
Display lighting	81
Nokia Music Player – Tuning in your FM radio.....	82
Selecting a frequency	84
Using FM frequency auto-search.....	85
Using station presets	86
Switching stereo and monaural	87
Nokia Music Player – Using as a hands-free headset.....	88
What phones can be used?	88
Connecting your Nokia Music Player and phone.....	89
Receiving and making calls	91
Receiving a call.....	92
Placing a call	92
Nokia Music Player – Hands-free switching	94
Volume setting and Music Call	97
Nokia Music Player – Battery	98
Power-saving tips	99

Contents 3 of 3

Nokia Audio Manager –	
Error Messages	100
Nokia Audio Manager – File types	101
Playable file types with	
Nokia Audio Manager	101
Nokia CD Manager –	
Error Messages	102
Nokia Music Player –	
Error Messages	104
Nokia Music Player –	
Troubleshooting	106
Care and maintenance	109
Nokia Music Player	109
Memory card	109
Battery	110

Specifications	111
Personal computer	111
Memory card	112
Suggested encoding bit rates.....	113
Upgrading – Nokia Audio Manager	114
Definitions	115

Introduction – For your safety

Read these simple guidelines. Breaking the rules may be dangerous or illegal. Further detailed information is given in this manual.

Please refer to the user guide of the phone for instructions on operation, care and maintenance, including important safety information.



Road safety comes first

You can connect your Nokia mobile phone to the Nokia Music Player but do not use the phone while driving; park the vehicle first.



Interference

All wireless devices may get interference which could affect performance.



Switch off in hospitals

Follow any regulations or rules. If you have a Nokia mobile phone connected to your Nokia Music Player, switch the phone off near medical equipment.



Switch off in aircraft

Wireless devices can cause interference. Switch off your Nokia Music Player and Nokia mobile phone while onboard aircraft. Using them on aircraft is illegal.



Switch off when refueling

Do not use phones at refuelling points. Do not use near fuel or chemicals.



Switch off near blasting

Do not use phones or radios where blasting is in progress. Observe restrictions, and follow any regulations or rules.

Introduction – For your safety



Use qualified service

Only qualified service personnel must install or repair equipment.



Accessories and batteries

Use only approved accessories and batteries. Do not connect to incompatible products.



Connecting to other devices

When connecting to any other device, read the user's guide for detailed safety instructions. Do not connect incompatible products. Remember to make backup copies of all important data.



Listening volume

We want you to enjoy your music but please be careful not to play your music too loud. Continuous loud noises can damage your hearing. Please use care when selecting your listening volume.



Headphones and neckstrap

Do not use the headphones or the neckstrap when it would not be safe to do so.

Introduction – Uses of your Nokia Music Player

There are three different ways of using your Nokia Music Player.

Stand-alone player

Your Nokia Music Player can be used by itself as a small, portable, high-quality, playback device. For information about using your Nokia Music Player as a stand-alone player see [Nokia Music Player – Memory card playback](#).

Connected to your Nokia mobile phone

When connected to your Nokia mobile phone the Nokia Music Player allows hands-free operation of the phone. You can receive calls and dial out without touching your Nokia mobile phone. For information about using your Nokia Music Player with your Nokia mobile phone see [Nokia Music Player – Using as a hands-free headset](#).

Note: Because the same cable port is used for both connections to your Nokia mobile phone and your personal computer it cannot be used to connect to both devices at the same time.

Connected to a compatible PC

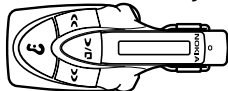
The Nokia Music Player receives from your PC new music files, downloaded directly to the memory card in the Nokia Music Player. For information about using your Nokia Music Player when connected to your PC starts see [Nokia Audio Manager – Usage](#) or [Nokia CD Manager](#).

Note: Do not use this product improperly to violate anyone's copyrights or other rights in the music you download or play.

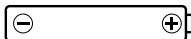
The license is system specific. If you plan on using the software on multiple computers, you must register on each computer.

Introduction – Contents of the sales package

Nokia Music Player



AAA Battery, (1)



USB cable



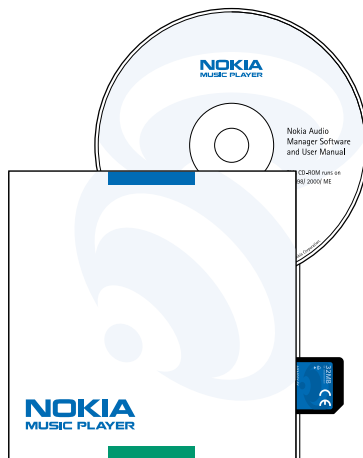
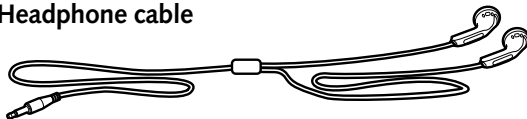
Neck strap



Phone cable

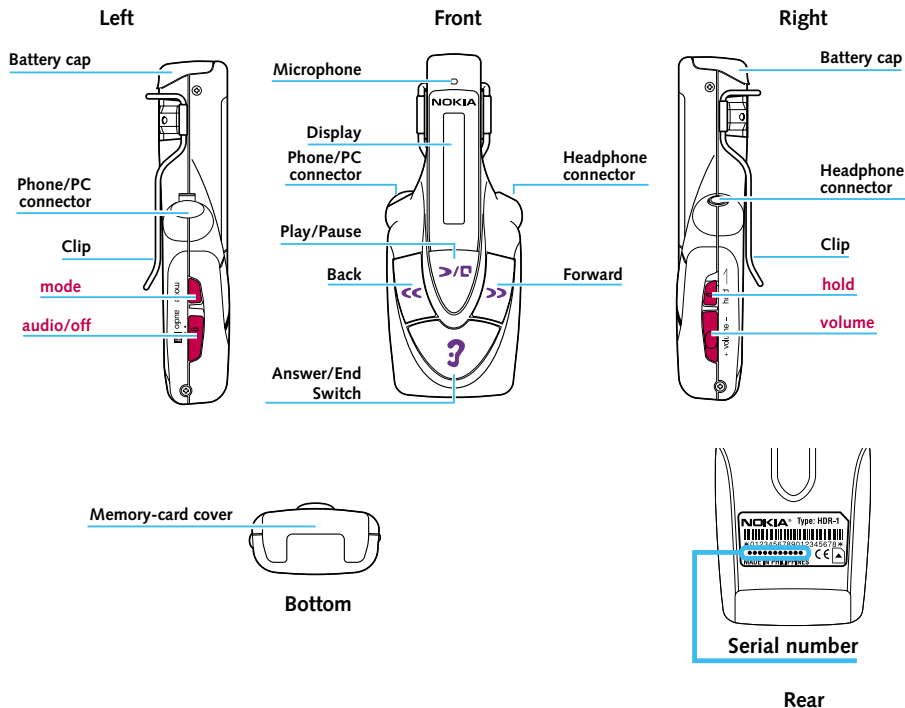


Headphone cable



CD-ROM jacket
Memory card
Warranty card (not shown)

Introduction – Your Nokia Music Player diagram



Software choices

You must choose between these two pieces of software to manage your music.

Note: The Nokia CD Manager and the Nokia Audio Manager were not developed to be used at the same time. Please close one before using the other.

Nokia CD Manager

Nokia CD Manager allows you to copy music from an audio CD, rename the tracks, and transfer the music to your Nokia Music Player. No **Internet** connection is needed.

Easy to use

- CD read management
- Simple download to Nokia Music Player
- AAC 64 kbps only supported (64 kbps is one hour on a 32MB memory card.)

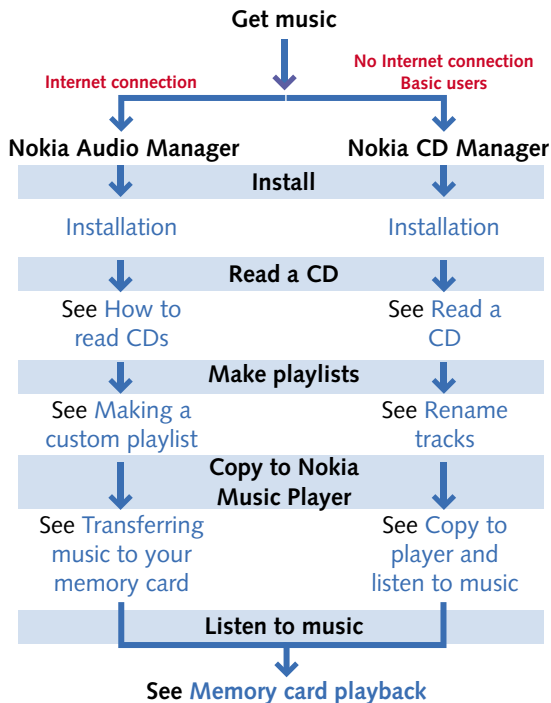
Nokia Audio Manager

Nokia Audio Manager is a complete music manager that allows you to copy music from audio CDs (reading), get music from the Internet, create a database of your music and transfer to your Nokia Music Player. A connection to the **Internet** is necessary for access to the CD Database with Nokia Audio Manager.

Main features

- CD Reader (AAC)
- Database management (multiple formats: MP3, AAC, etc.) including legacy MP3 files
- Download to Nokia Music Player
- Internet connection (downloading music)

Getting and listening to music



Quick & Easy

Nokia CD Manager

Install Nokia CD Manager

Insert the CD-ROM into your personal computer. Install by choosing icon on Main Menu. An **Internet** connection is not used.

Note: Do not connect your Nokia Music Player to your personal computer before installing Nokia CD Manager.

Before you can connect the music player, see **Getting Started** to learn how to:

- install the battery,
- attach the headphone cable,
- insert the memory card.

Connect your Nokia Music Player

Connect the USB cable to the Phone/PC connector and the USB port on your personal computer.

Turn on your Nokia Music Player

Slide the **audio/off** switch to **audio**.

Start Nokia CD Manager

Select Nokia CD Manager from the start menu.

Insert a music CD

Insert a music CD into your personal computer.

Select tracks

Click on track titles to select tracks to transfer to your personal computer.

Quick & Easy

Transfer tracks from the CD

Click on **Read a CD** to transfer the selected tracks to your personal computer.

Rename tracks

Right-click on a track. Enter track titles or rename tracks.

Save your renamed tracks

Click on **Rename** to close the box and save your renamed title.

Copy to your Nokia Music Player

Select tracks from the left side of the screen to transfer to your Nokia Music Player. Click **Add**. The selected tracks are transferred to your Nokia Music Player.

Nokia Audio Manager

Install Nokia Audio Manager

Insert the CD-ROM into your personal computer. Install by choosing icon on Main Menu.

Note: Before you can connect the music player, see [Getting Started](#) to learn how to:

- install the battery,
- attach the headphone cable,
- insert the memory card.

Connect your Nokia Music Player

Connect the USB cable to the Phone/PC connector and the USB port on your personal computer.

Quick & Easy

Turn on your Nokia Music Player

Slide the **audio/off** switch to **audio**.

Start Nokia Audio Manager

Select Nokia Audio Manager from the start menu.

Insert a music CD

Insert a music CD into your personal computer.

Get tracks from the CD

Click on **make a playlist**, then **read a CD**.

Get track titles from the CD Database

If track titles have not been recorded on the CD, Nokia Audio Manager will ask if you want to download the track titles from the CD Database on the Internet. Click **Yes**. You will need an **Internet** connection.

Select track/tracks

Click in the box next to the track/tracks you wish to copy to the music database.

Start reading tracks

Click **Start Reading**. When all selected tracks are copied, **Recording completed successfully** is displayed. These tracks have been added to your database of music tracks.

Select tracks from the database

Click **Select Tracks From Database**.

Select tracks for the playlist

Click in the box next to the track/tracks you wish to copy to add to the playlist then click **OK**.

Quick & Easy

Save the selected tracks to a playlist

Click **Save Tracks as Playlist** and enter a name for the playlist. Click **Close**.

Copy to your Nokia Music Player

Click **copy to devices**.

Select tracks or playlists to copy to your Nokia Music Player

Click **Select Tracks From Database** or **Select Playlists From Database** and click in the box next to the tracks or playlists you wish to copy to the Nokia Music Player then click **OK**.

Copy to your Nokia Music Player

Confirm that your Nokia Music Player is on. Click **Copy To Portable. Sending to device** is displayed and a progress window appears. When the copy is finished, **Finished transferring tracks** is displayed. Click **OK**.

Nokia Music Player

Turn on the music player (Standby mode)

Slide the **audio/off** switch to **audio**.

Begin playback

Press **>/□**.

Adjust volume

Press the volume button up **+** or down **-**.

Pause playback

While a track is playing, press **>/□**.

Quick & Easy

Resume playback

While a track paused, press ►/□.

Select tracks

Press ►► with one quick press to move to the next track. Press ◀◀ with two quick presses to move to the previous track.

Scanning tracks

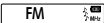
Press and hold ◀◀ or ►►. When you release ◀◀ or ►►, playback begins again.

FM radio

Turn on the music player

Slide the **audio/off** switch to **audio**.

Select playback from the FM radio

Press and hold the **mode** key for several seconds until  is displayed.

Select a frequency

Press ◀◀ or ►► until the desired frequency is tuned in.

Adjust volume

Press the volume button up + or down -.

Quick & Easy

Hands-free headset

Before you can use the music player as hands-free headset, connect your Nokia Music Player to your Nokia mobile phone. See [Connecting your Nokia Music Player and phone](#).

Receive a call

Press **3** for a second.

Placing a call (only Nokia mobile phones 3310 and 8890)

1. Press and hold the **3** until the voice starting tone is heard through the headphone.
2. Speak the name of the number already recorded in your Nokia mobile phone.

End call

Press the **3**.

Install Nokia Audio Manager

Installation

These are the minimum requirements to successfully install Nokia Audio Manager:

Item	Requirement
PC	IBM PC/AT compatible.
CPU	Pentium MMX 266 MHz required. Pentium 300 MHz recommended.
Memory	Minimum 48 MB recommended. 64 MB suggested for Windows 2000.
Hard disk	35 MB of free space is required to install the software. Additional free space is necessary for music files.

Note: If you do not have an **Internet** connection, please refer to **Install Nokia CD Manager**.

Do not connect your Nokia Music Player to your personal computer until after either Nokia Audio Manager or Nokia CD Manager has been installed.

The installation process starts by clicking on **Install the Nokia Audio Manager** button in the Set-up Program (Install program) for the Nokia Music Player on the CD-ROM.

Load CD-ROM into your personal computer

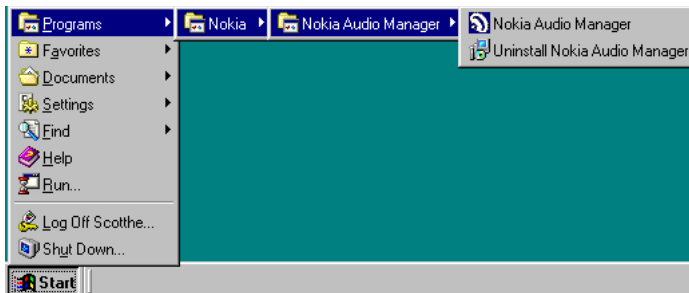
Quit all other applications and then load the CD-ROM you received with your Nokia Music Player into your personal computer. Please refer to the user manual you received with your personal computer for more information. Nokia Audio Manager is automatically installed onto your hard disk after choosing the install button on the Main Product Menu. Follow on-screen instructions to successfully complete installation.

Install Nokia Audio Manager – Install error

Uninstall Nokia Audio Manager

Automatic Nokia Audio Manager uninstall (from Start menu)

Select **Start > Programs > Nokia > Nokia Audio Manager > Uninstall Nokia Audio Manager**.



Follow the dialog boxes until you have successfully uninstalled Nokia Audio Manager.

Install Nokia CD Manager

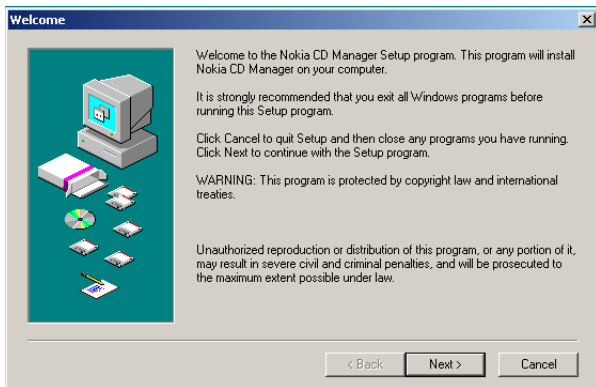
Installation

The installation process starts by clicking on **Install the Nokia CD Manager** button in the Set-up Program (Install program) for the Nokia Music Player on the CD-ROM.

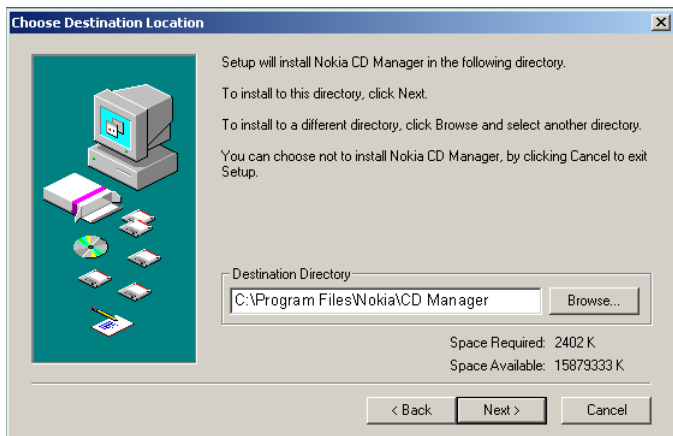
Load CD-ROM into your personal computer

Quit all other applications and then load the CD-ROM you received with your Nokia Music Player into your personal computer. Nokia CD Manager is automatically installed onto your hard disk after choosing the install button on the Install Nokia Audio Manager screen. Follow on-screen instructions to successfully complete installation.

Note: Do not connect your Nokia Music Player to your personal computer before installing Nokia CD Manager.

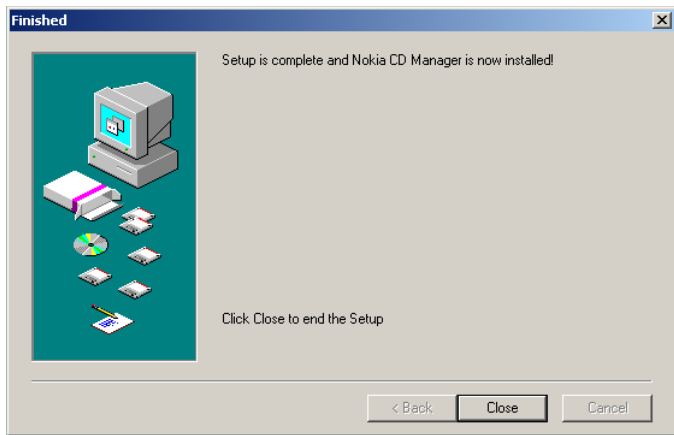


Install Nokia CD Manager



The destination directory for the program files is **C:\Program Files\Nokia\CD Manager**. Click **Next>** to continue. It is recommended that you use this directory due to links to program executables.

Install Nokia CD Manager



Installation is complete. Click **Close**.

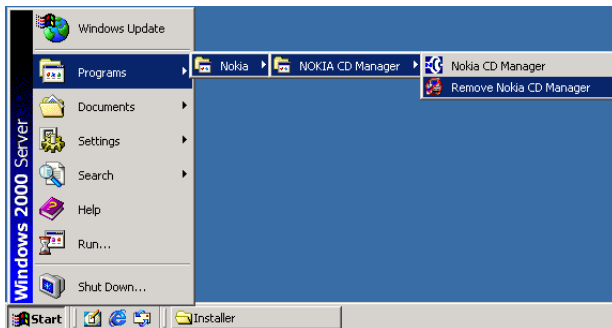
Install Nokia CD Manager – Install error

Uninstall Nokia CD Manager

Automatic Nokia CD Manager uninstall process (from Start menu)

On CD Manager installation failure click **Cancel**.

Select **Start > Programs > Nokia > Nokia CD Manager > Remove Nokia CD Manager**.



Follow the dialog boxes until you have successfully uninstalled Nokia CD Manager. After uninstalling Nokia CD Manager try the installation again by clicking on **Install the Nokia CD Manager** button in the Set-up Program (Install program) for the Nokia Music Player on the CD-ROM.

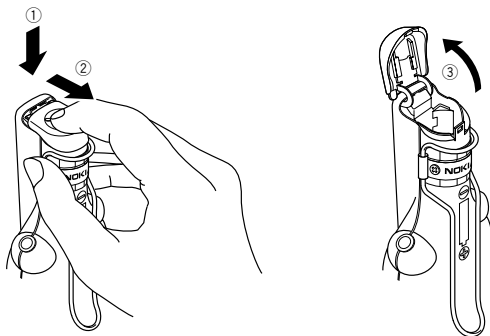
Nokia Music Player – Getting started

There are a few short steps to get ready to use your Nokia Music Player. Follow the steps carefully.

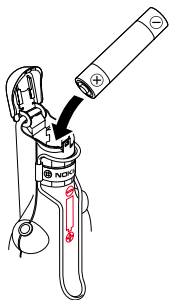
Installing the battery

Remove the battery cap

Hold the Nokia Music Player with the back of the player facing you. Press down on the battery cap ① and pull the battery cap towards you ②, in the direction of the arrows on top of the battery cap. Carefully fold the battery cap back, opening the battery compartment ③.

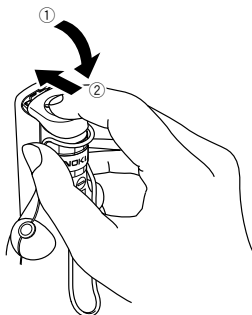
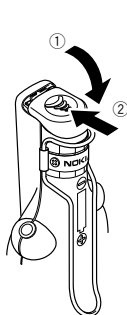


Nokia Music Player – Getting started



Insert the battery

Insert the plus + end of the battery first into the battery compartment.



Close the battery cap

Fold the battery cap down ① and carefully press and slide the battery cap back into place ②, closing the battery compartment.

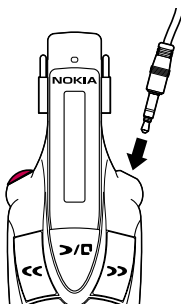
Nokia Music Player – Getting started

Attach the headphone cable

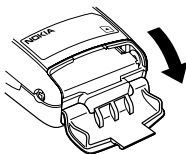
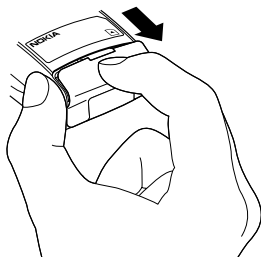
Plug the headphone cable in on the right side of the Nokia Music Player.

Note:

Always be careful when inserting or removing the headphone cable. Grasp the cable by the thick portion just above the metal plug. Never insert or remove the cable by holding or pulling the cable portion itself.



Inserting the memory card



Open the memory-card cover

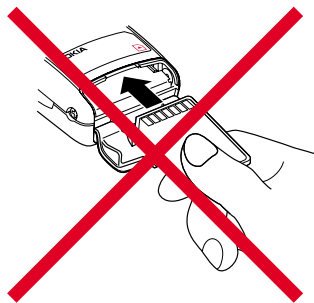
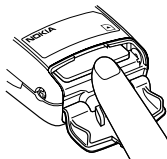
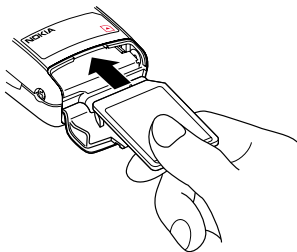
Grasp the end of the Nokia Music Player and pull the memory-card cover open from the notch.

Nokia Music Player – Getting started

Insert the memory card

Turn the Nokia Music Player face down and hold the memory-card cover open. With the label side of the memory card facing up, slide the card into the memory-card slot and push in. The memory card locks into place.

Note: Before installing the memory card, always make sure that the Nokia Music Player is switched off.

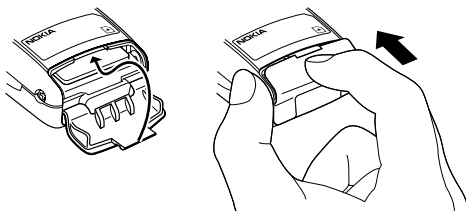


Nokia Music Player – Getting started

Close the memory-card cover

Slide the tab of the memory-card cover into the memory-card compartment.

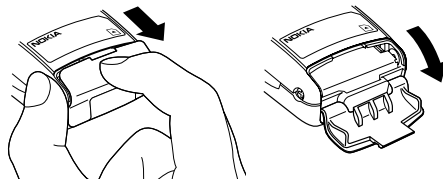
Note: If the memory card is not properly inserted all the way, you cannot close the memory-card cover. Remove the memory card, see below, and insert it again.



Removing the memory card

Open the memory-card cover

Grasp the end of the Nokia Music Player and slide the memory-card cover open.

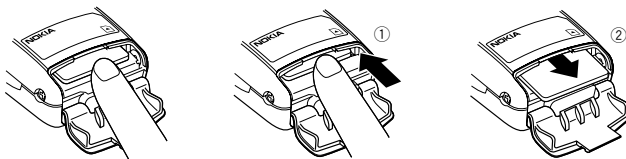


Nokia Music Player – Getting started

Remove the memory card

Press the memory card in ①. When the memory card is pushed all the way in it springs back out ②. Pull the memory card out and remove it from the Nokia Music Player.

Note: Do not remove the memory card while the Nokia Music Player's power is on. This could result in loss of recorded music from the memory card and damage the memory card.

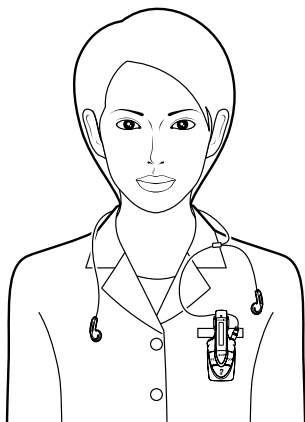


Nokia Music Player – Getting started

How to wear your Nokia Music Player

Wearing your headphones

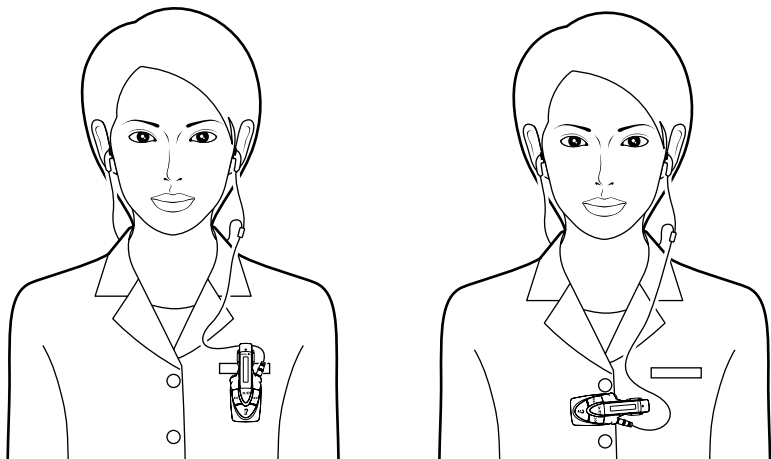
The left headphone is marked with an **L**. Put this headphone in your left ear. The longer headphone cable is the right channel. Place the right channel cable behind your neck to your right ear.



Nokia Music Player – Getting started

Wearing your Nokia Music Player

Your Nokia Music Player has a clip on the back that can attach or hang the Nokia Music Player to varying thicknesses of clothing. You can hang the music player from the top of a pocket, on the collar of a suit, almost anywhere.



Nokia Music Player – Getting started

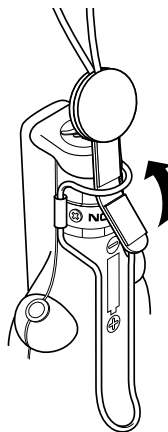


Thread the headphone cable into the neckstrap

Thread the headphone cable through the Nokia-labeled cable holder before plugging the headphone cable into your Nokia Music Player.

Attach the strap to the Nokia Music Player

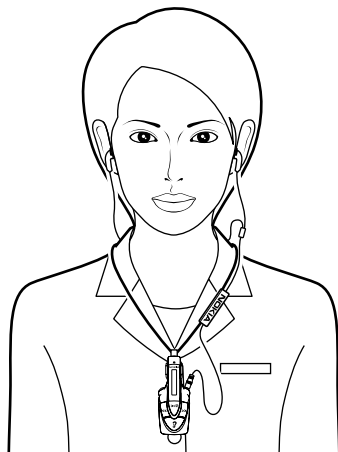
Loop the Nokia Music Player leather-like strap through the hook on the back of the Nokia Music Player.



Nokia Music Player – Getting started

Wearing the neck strap

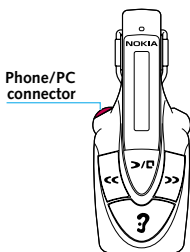
Place the neck strap over your head and hang the Nokia Music Player.



Note: The headphone cable acts as your FM radio antenna. Use of the neck strap prevents the headset cable from becoming tangled and improves FM radio reception.

Connecting to your personal computer

Note: You must install Nokia Audio Manager or Nokia CD Manager before connecting your Nokia Music Player to your personal computer.



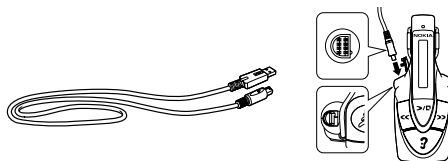
Remove the Phone/PC connector cap

Pull open the cap on the Phone/PC connector. The cap can be removed from the Phone/PC connector but stays attached to your Nokia Music Player.

Note: To prevent dust, dirt or moisture from getting into the Phone/PC connector on your Nokia Music Player always replace the cap when not in use.

Connect your Nokia Music Player

Insert the USB cable into the Phone/PC connector, being careful to line up the pins.



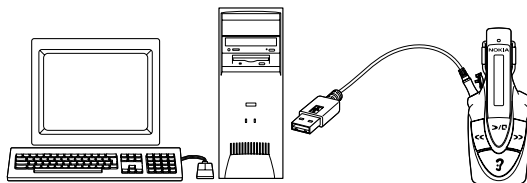
Note: Always be careful when inserting or removing the headphone cable. Grasp the cable by the thick portion just above the metal plug. Never insert or remove the cable by holding or pulling the cable portion itself.

Connecting to your personal computer

Connect a compatible personal computer

Insert the USB cable into the USB connector on a compatible personal computer. Refer to the user manual you received with your personal computer for further details.

Note: When attaching the Nokia Music Player, please put the player in standby mode. Slide the Audio/off switch to off then slide Audio/off to Audio again. This is standby mode.



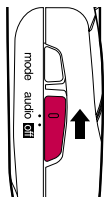
Note: Disconnect your Nokia Music Player from the personal computer and turn it off if you do not plan to use it for an extended time.

Turn on the music player

Slide the **audio/off** switch to **audio**.

Note: If no memory card has been inserted or if the memory is not inserted properly **No Media** is displayed. If the memory card is blank **No Tracks** is displayed.

If the player is not used for three minutes the unit will go to sleep and the display goes blank. Press **>/<** to wake the player.



Nokia Audio Manager – Usage

Managing your music

With your Nokia Music Player connected to your personal computer and using the supplied Nokia Audio Manager software you can:

Copy music from your personal CD library

You can copy the contents of your personal library of CDs and load them to memory cards for use in the Nokia Music Player.

Get music from the Internet

You can download specially encoded music files from the **Internet** and load them to your personal computer or memory card for playback.

Organize your music library

You can create playlists of your favorite music. These playlists can be loaded along with the music to your Nokia Music Player. You can also create a library of different collections of music.

Note: After installation an Internet connection is only necessary when retrieving CD track titles from the Compact Disc DataBase on the Internet.


MP3 files created for your Nokia Music Player are encrypted and cannot be played on other music players.

This product limits the content that can be downloaded to the device due to copyright protection. See **Nokia Audio Manager – File types**.

Nokia Audio Manager – Usage

Starting Nokia Audio Manager

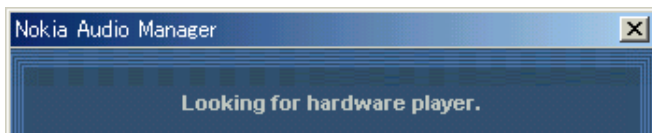
Start Nokia Audio Manager

Select the Nokia Audio Manager icon  from the start menu. The program loads and the starting screen is displayed.



Nokia Audio Manager – Usage

Nokia Audio Manager attempts to make a connection to your Nokia Music Player. **Looking for hardware player** displays on your computer screen.



If your Nokia music player is on and properly connected **PC connected** scrolls through the Nokia Music Player display.

Note: While your Nokia Music Player is connected to your personal computer and **PC connected** is displayed you will not be able to operate the controls on the Nokia Music Player to listen to music.

If your Nokia Music Player is off or if the Phone/PC cable is not properly connected, **Unable to communicate with portable device** is displayed on your computer screen. Follow the displayed instructions and refer to **Nokia Audio Manager – Error messages** in this manual.



Nokia Audio Manager – Usage

PC operation shortcuts

Some commands and menu selections can be done by typing a key or a combination of keys without moving the cursor. In this section those shortcuts are indicated by the command or menu selection in bold type with an underline under the character that is the shortcut.

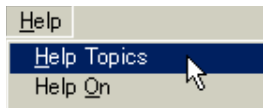
Select a menu

Press the **ALT** key and the shortcut key. If the menu to be opened is **File**, then press **ALT** and **F** at the same time. The **File** menu will open.



Select an item from an open menu

Press the shortcut key. If the item from the opened **Help** menu is **Help Topics**, then press **H**. **Help Topics** panel is displayed.



Select a button

Press the shortcut key. If the button is **Select Tracks From Database**, then press **T**. The **Select Tracks From Database** panel opens.

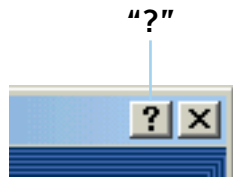
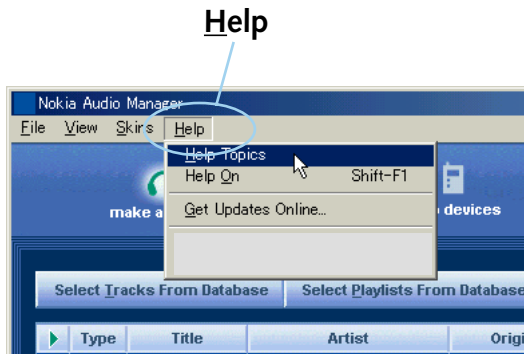


Nokia Audio Manager – Usage

Help – Where to go from here?

Follow these instructions carefully and while you are in Nokia Audio Manager if you have any specific questions click the **Help “?”** button in the upper right-hand corner of any dialog box to access the online help files and select the item in question. If you are not sure how to complete any task, choose **Help Topics** from the **Help** menu, in the upper left, and search for the task in question. The online help files provides detailed instructions for all the tasks you can perform with Nokia Audio Manager including additional tasks not listed in this manual.

Note: It is recommended that you read the online Help file after installation.



Step 1. Playback from a CD

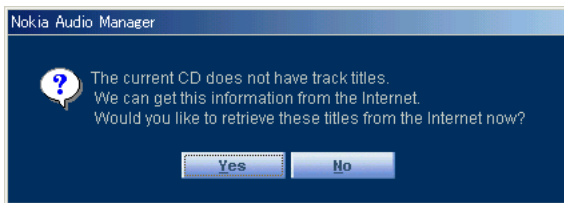
Play a CD

Start Nokia Audio Manager

Insert CD

Follow instructions for inserting a CD that came with your personal computer.

Note: If the inserted CD does not have track titles recorded on the CD the following alert box is displayed.



Press **Yes**. The Playlist information is downloaded from the CD Database on the **Internet** and displayed on your screen.

You must be able to connect to the **Internet** to get Playlist information from the CD Database.

Step 1. Playback from a CD

Get tracks from CD

Click **make a playlist**, then click **Get Tracks From CD**.

If there are already tracks listed in the Playlist when you click **Get Tracks From CD** a dialog box is displayed and asks if you want to **Play this CD**, **Append to Playlist** or **Cancel**. If you click **Play this CD** the current tracks listed are replaced by the tracks from the CD. If you select **Append to Playlist**, the tracks taken from the CD are added to the current tracks in the Playlist.

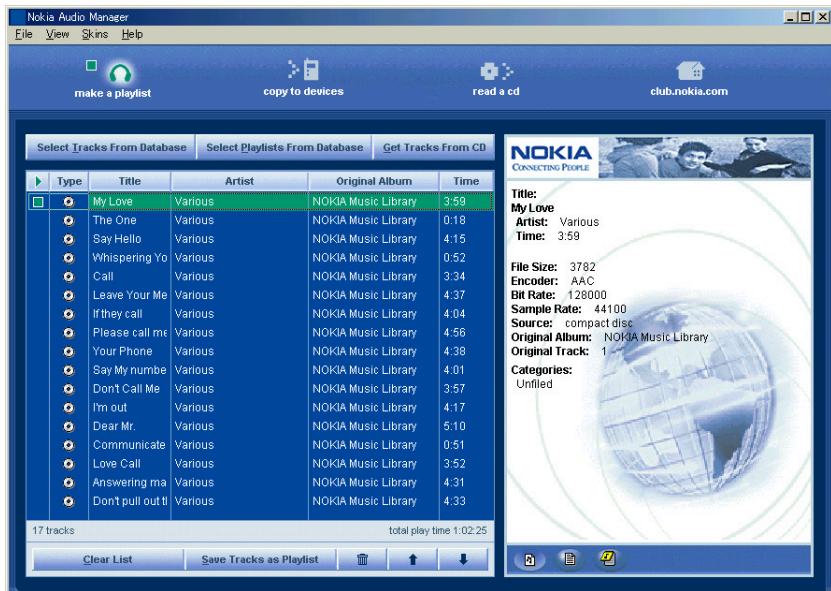


Get Tracks From CD

Step 1. Playback from a CD


Select a track

Select the track you wish to play by placing the cursor over the desired track and click. A green box appears to the left of the selected track and the track is highlighted. Information about the selected track is displayed in the right panel.




Step 1. Playback from a CD

Play the track

Press . The selected track begins to play and the green box changes to a green arrow showing that the track is playing. If available the current track name, length and artist scrolls through the display at the bottom of the window.

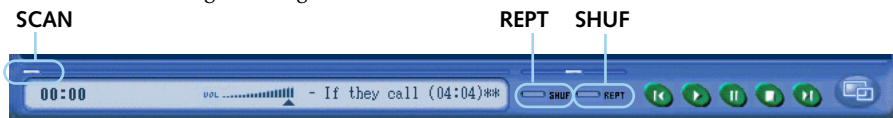
Note: A sound card is required to hear the playback. See [Specifications](#).

Select a different track

While a track is playing, select a different track and press . Play of the newly selected track begins.

Scan through a track

While a track is playing, place the cursor over the **SCAN** button, hold down the left mouse button and you can slide the **SCAN** button to any point in the track to listen to it. Playback continues even during scanning.



Repeat CD playback

Click **REPT**. The **REPT** indicator changes to green and after all tracks of the CD are played, playback begins again with the first track. To cancel repeat playback click **REPT** again.


Random playback

Click **SHUF**. The **SHUF** indicator changes to green and the tracks of the CD are played back in random order. To cancel random playback click **SHUF** again.

Step 1. Playback from a CD

Using the Small Player

Switch to Small Player

Click  , on the bottom right-hand side of the panel, to transform Nokia Audio Manager into a Small Player.



In Small Player mode you can play the tracks in **your** current Playlist. To return to the Big Player, right click on the Small Player and select **B**ig Player.

Step 2. How to read CDs

Adding tracks from CDs

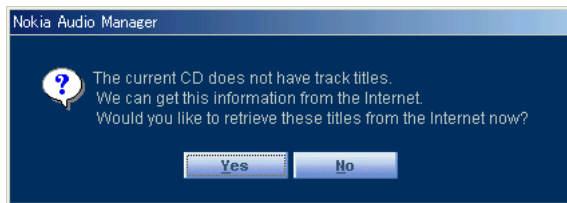
In Nokia Audio Manager, you can record tracks from your audio CDs. The tracks are recorded as digital audio files and stored on your hard disk.

Insert CD

Follow instructions for inserting a CD that came with your personal computer.

Note: If you insert CD while Nokia Audio Manager is open, tracks from the CD are automatically added to the Playlist.

If the inserted CD does not have track titles recorded on the CD, the following alert box is displayed.



Press **Yes**. The Playlist information is downloaded from the CD Database on the **Internet** and displayed on your screen.

You must be able to connect to the **Internet** to get Playlist information from the CD Database.

Get tracks from CD

Click **read a CD**.

Step 2. How to read CDs

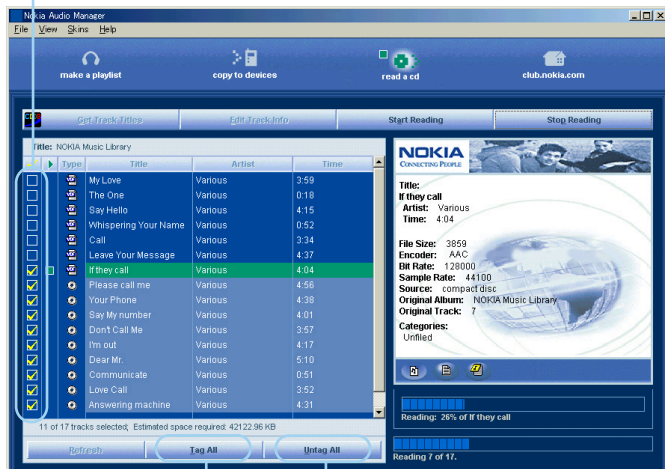
Select a track

Click in the square box next to the track you wish to select. A check mark appears in the box.

Deselect a track

Click on a check mark next to the track you wish to deselect.

Select/Deselect



Tag All

Untag All

Select all tracks

Click **T**ag All.

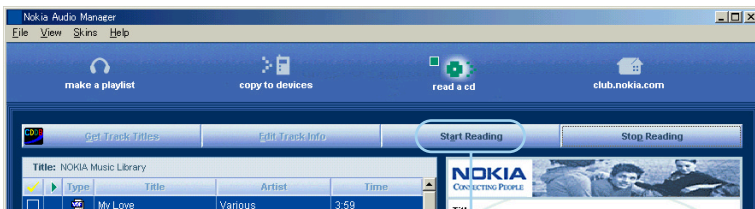
Deselect all tracks

Click **U**ntag All.

Step 2. How to read CDs

Start reading tracks

Click **Start Reading**. Nokia Audio Manager starts encoding and copying the selected tracks to the hard disk. The status of the operation is shown in the progress bars in the bottom right of the panel. After a track has been encoded and copied to the hard disk the check mark disappears the type icon changes from a CD icon to a hard disk icon. When all selected tracks have been encoded and copied to the hard disk **Recording completed successfully!** is displayed. Click **OK**. Nokia Audio Manager has created a playlist in your database for this CD and links the new track records to that playlist.



Start Reading

Step 2. How to read CDs

Edit track info

On the **read a cd** window, click **Edit Track Info**. The Review Playlist panel appears and the titles of the tracks is displayed. Select the track you wish to edit by clicking on it. Click **Review/Edit**. Edit existing information or add information for each track. Press <<**Prev** or **Next**>> to move to the previous track or to the next track. Press **Close** to save your changes and close the window or press **Cancel** to discard your changes and close the window.

Step. 3 Working with the database

Add tracks from the Internet

In the future you may be able to download digital audio files from the Internet. Nokia Audio Manager can also detect these files as they are added to your hard disk and automatically add them to your database.

Connect to the Internet

Click club.nokia.com. Nokia Audio Manager uses your Internet connection to connect to Club Nokia.

Note: If this is your first visit to Club Nokia register. Click Join Club Nokia. Follow the instructions to register.



Note: If you do not have an active Internet connection, do not click on the link to go to club.nokia.com. Your computer may hang causing you to restart the computer.

Step. 3 Working with the database

View downloadable files

In the future Nokia Club may offer downloads (some of which may be free, some of which may be purchased) from a variety of partners. Follow links to partners' web sites for additional downloads. If you know the Web address of a specific site that you would like to visit, type the address in the address field and click the Enter key on your keyboard. The controls on this window (**Back, Forward, Stop, and Home**) work just like your Web browser.

Download files

Typically, to download a file from the Internet, you click the link for the file that you want to download. Specify where you want to store the file on your hard disk and your browser download the file. Downloaded files are automatically added to your database. See the documentation for your Web browser for more information on downloading files from the Internet.

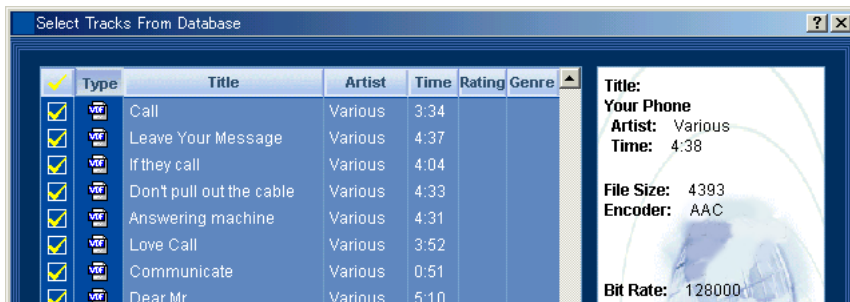
Step. 3 Working with the database

Making a custom playlist

After your tracks are in the database you can select tracks to make custom playlists. Create a playlist when you want to make party mixes or create playlists to send to your Nokia Music Player. Add the tracks you want to the current playlist, organize the tracks in the order you want, and save the list as a playlist.

Select tracks from the database

Click **make a playlist** then click **Select Tracks From Database**. **Select Tracks From Database** window appears and shows a list of all tracks in your database, including the track title, artist, playing time, rating, and genre. You can sort the list of tracks by clicking on any column heading, for example click the **Artist** column heading to sort the list alphabetically by artist.



Step. 3 Working with the database

Select tracks to add to the playlist

Click in the square box next to the track you wish to select. A check mark appears in the box next to a selected track. You can also click **Tag All** to select all displayed tracks or **Untag All** to deselect all tracks. When you have selected the tracks to be added click **OK**.

Save the custom playlist

Click **Save Tracks as Playlist**.

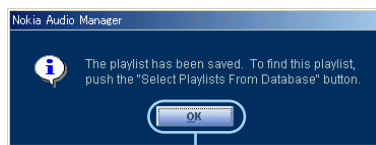


Save Tracks as Playlist

The **Add Playlist** window is displayed. Enter a name for your custom playlist and any additional information you wish to add either by entering the information or by clicking on the drop-down menu boxes. When you have finished entering information, click **Close** to save your custom playlist or **Cancel** to discard your changes and close the window. If you click **Close**, The **playlist has been saved** is displayed. Click **OK**.



Close Cancel



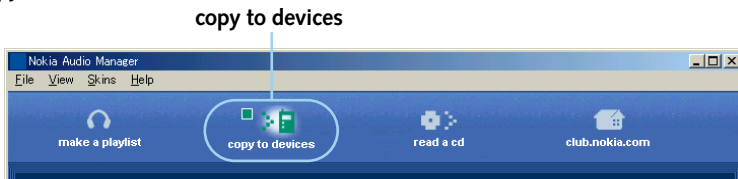
OK

Step 4. Transferring music to your memory card

You can use Nokia Audio Manager to transfer tracks and playlists to your Nokia Music Player.

Open the devices window

Click **copy to devices**.

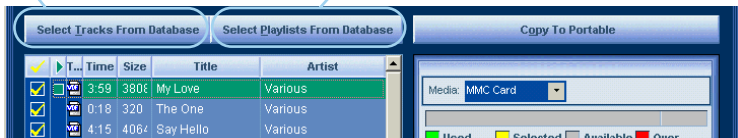


Add tracks

Click **Select Tracks From Database** or **Select Playlists From Database** to select and add tracks or playlists.

Select Tracks From Database

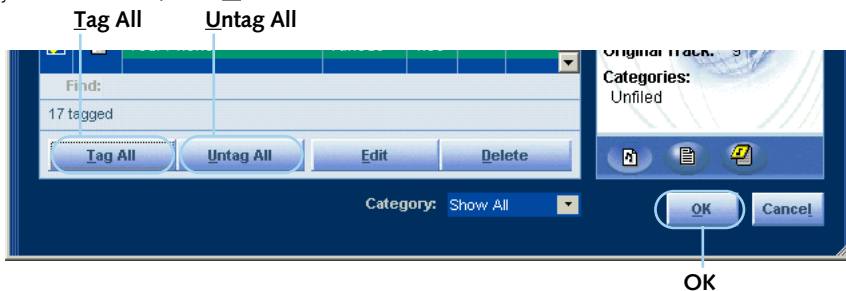
Select Playlists From Database



Step 4. Transferring music to your memory card

Select tracks to transfer

Click in the square box next to the track or playlist you wish to select. To select all of the tracks in the list, click the **Tag All** button. To deselect all the tracks that are currently selected, click the **Untag All** button. After you have selected the tracks or playlists that you want to add to your transfer list, click **OK**.

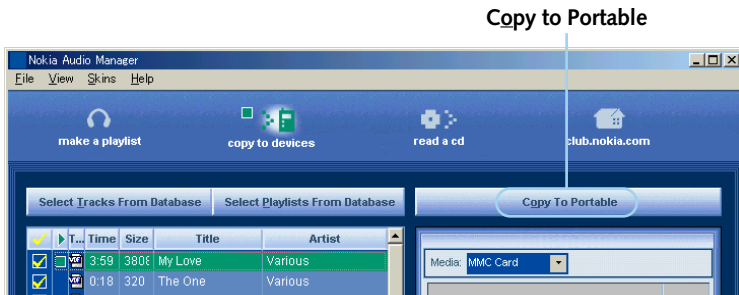


Note: If the number of tracks or playlists exceeds the capacity of the memory card, **Not enough room** panel appears. Follow the instructions on the panel to deselect tracks or playlists until the capacity of the memory is no longer exceeded.


Step 4. Transferring music to your memory card

Copy selected tracks to the memory card

Click **Copy to Portable**. **Converting file for download** is displayed and then **Sending to device** with a progress window. When the transfer is complete **Finished transferring tracks** is displayed. Click **OK**.



Remove tracks from the memory card

Remove tracks from the memory card by selecting a track and click  or right click on a track and click on **Remove**. The track is erased from the memory card.

Step 5. Backup music and restore

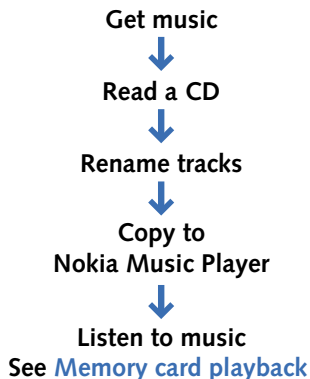
This feature to be offered in the future. Please access club.nokia.com for information.

Nokia CD Manager

The Nokia CD Manager allows you to copy music from an audio CD, rename the tracks, and transfer the music to your Nokia Music Player. A connection to the Internet is not necessary for the Nokia CD Manager.

Getting and listening to music overview

Using Nokia CD Manager you can quickly get and listen to your music.

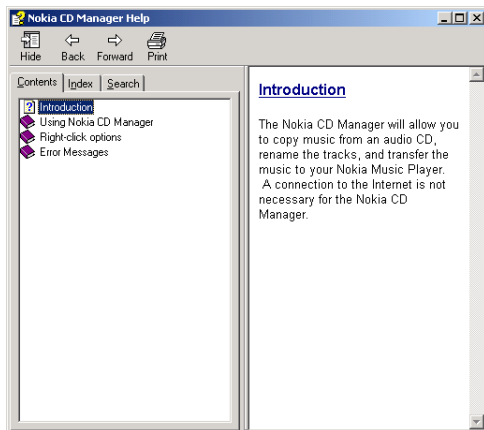


Nokia CD Manager – Help

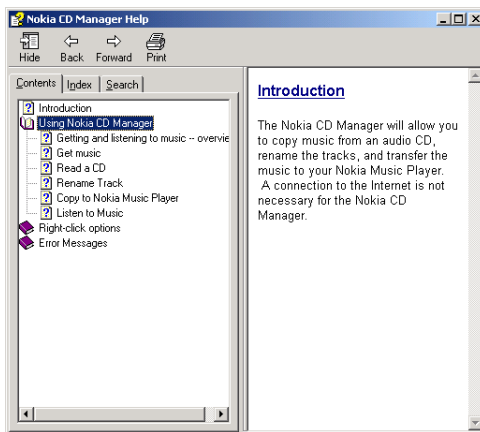
Help – Where to go from here?

Follow these instructions carefully and while you are in Nokia CD Manager if you have any specific questions right-click on the face of the application window and select **Help** to access the online help files and select the item in question. The online help files provides detailed instructions for all the tasks you can perform with Nokia CD Manager including additional tasks not listed in this manual.

Note: It is recommended that you read the online Help file after installation.

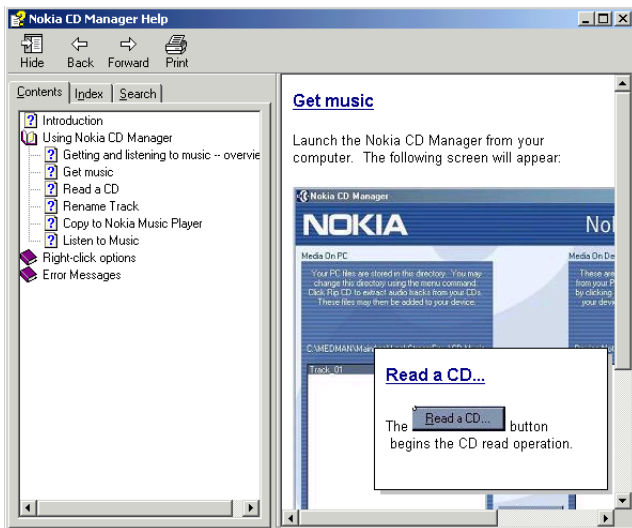


Nokia CD Manager – Help



First double click on any book icon in the left panel to open the help item list. Then click on any topic for the help information to be displayed in the right panel.

Nokia CD Manager – Help

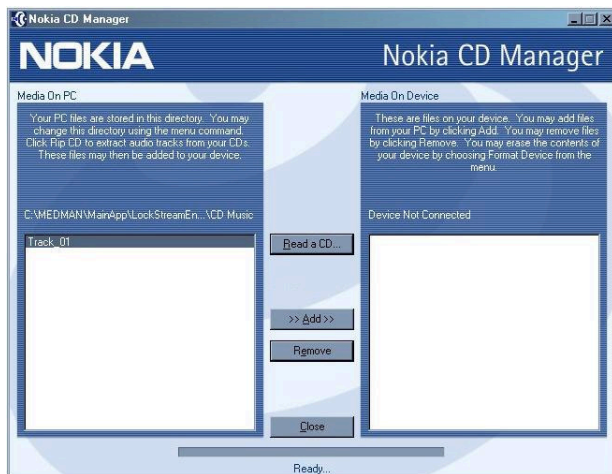


Click on any button displayed in the right panel and a pop-up information box is displayed.

Nokia CD Manager

Step 1. Get music

Select the Nokia CD Manager icon from the start menu. The following screen will appear:



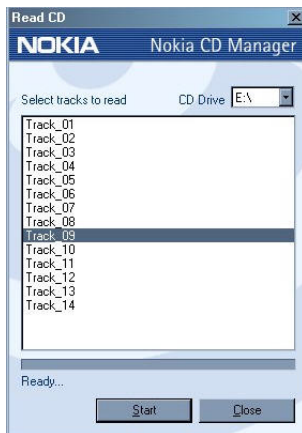
Any audio files existing on your computer are listed on the left; any audio files existing on your personal device are listed on the right. If your device is not currently connected to your computer, the column on the right will reflect this.

Nokia CD Manager

Step 2. Read a CD

“Read a CD” refers to the process of copying the tracks from your CD-ROM to the hard disk drive of your computer. To read a CD, simply place an audio CD disk in the appropriate drive, and start Nokia CD Manager. Choose consecutive files by using the shift key; choose nonconsecutive files by using the control key.

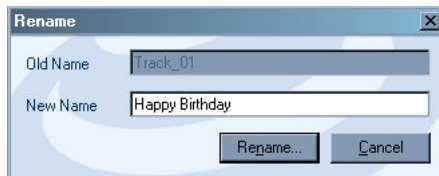
Click the **Start** button to launch the CD Transfer dialog. The Progress Control bar will show the progress of the operation.



Nokia CD Manager

Step 3. Rename tracks

Right-click on a single file name in the Track List Box. The Edit Box will display the name of the currently selected file name.



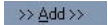
Type in the name that you choose. The name must be unique; another track with the same name cannot exist on your computer or your Nokia Music Player.

Note: Do not use any of the following characters in the name: / \ : * ? " < > ! @ |
Click the **Rename** to complete the operation.

Nokia CD Manager

Step 4. Copy to player and listen to music

On the left side of the screen, highlight the media files to transfer to the Nokia Music Player. You can use the shift key to highlight consecutive files, or the control key to highlight non-consecutive files.

Click the  button to copy the files to the Nokia Music Player.

See [Nokia Music Player – Memory card playback](#).

Nokia CD Manager

Step 5. Using menus

Media On PC—Right click

Right-clicking any item in the list of the **Media On PC** box will bring up the following menu:



Change PC Directory

The Audio Manager by default saves your media files to the **C:** drive of your computer. To change the directory, right-click on the face of the Nokia CD Manager and choose **Change PC Directory...**

Refresh Device

Refresh the **Media On PC** or **Media On Device** list box.

Format Device

To format the memory card in your Nokia Music Player, right-click on the face of the Nokia CD Manager and choose **Format Device...**

Note: All music on the memory card of the Nokia Music Player will be lost when the device is formatted!

Nokia CD Manager

Read a CD

Nokia CD Manager starts reading from your audio CD.

Remove

Right-click on the name of the file to remove.

Rename

Right-click on the name of the file to rename the file.

Help

The **Help** option will access an on-screen help file.

Close

Close closes Nokia CD Manager.

Nokia CD Manager

Media On Device–Right click

Clicking on a single file in the **Media On Device** window will bring up the following Menu:



Change PC Directory

The Nokia CD Manager by default saves your media files to the **C:** drive of your computer. To change the directory, right-click on the face of the Nokia CD Manager and choose **Change PC Directory...**

Refresh Device

Refresh the **Media On PC** or **Media On Device** list box.

Format Device

To format the memory card in your Nokia Music Player, right-click on the face of the Nokia CD Manager and choose **Format Device...**

Note: All music on the memory card of the Nokia Music Player will be lost when the device is formatted!

Read a CD

Nokia CD Manager starts reading from your audio CD.

Nokia CD Manager

Rename_track

You cannot rename a track from the **Media On Device** link box.

Remove

Right-click on the name of the file to remove.

Help

The **Help** option will access an on-screen help file.

Close

Close closes Nokia CD Manager.

Nokia CD Manager

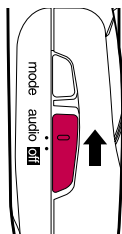
Step 6. Backup music and restore

This feature to be offered in the future. Please access club.nokia.com for information.

Nokia Music Player – Memory card playback

Memory card playback controls

This section explains in detail the controls you use to listen to music from a memory card. To copy music to the memory card see [Transferring music to your memory card](#) (with Nokia Audio Manager) or [Copy to player and listen to music](#) (with Nokia CD Manager).



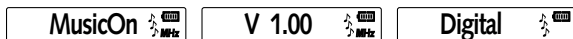
Turn on the music player

Slide the **audio/off** switch to **audio**.

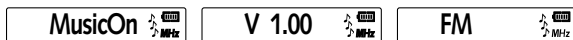
Note: If no memory card has been inserted or if the memory card is not inserted properly **No Media** is displayed. If the memory card is blank **No Tracks** is displayed.

Select playback from the memory card

If the music player was last used for playback from the memory card the display shows:

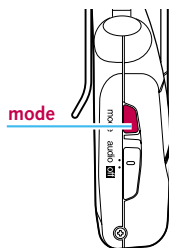


If the music player was last used for playback from the FM radio the display shows:



Note: The Nokia Music Player is shipped with Firmware Version 1.00. See [Upgrade – Nokia Music Player](#) for instructions on how and when to upgrade the firmware (to be used for special feature upgrades in the future).

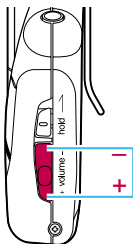
Nokia Music Player – Memory card playback



To switch from FM radio playback to memory card playback press and hold the **mode** key for *several seconds* until **Digital** is displayed and then the playlist name.

Note:

If no playlist name has been recorded to the memory card **Unknown** is displayed.



Adjust volume

Press the volume button up **+** or down **-** to adjust the volume.

Minimum



Maximum



Note:

The volume level is remembered by the Nokia Music Player. When playback resumes the volume returns to the last setting.

Nokia Music Player – Memory card playback

Play a track

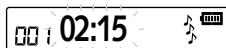
Press **>/□**. The first track on the memory card begins to play, the track title scrolls for 30 seconds then the playtime is displayed.

Blinks during playback



Pause playback

While a track is playing, press **>/□** and playback pauses and the playtime and music notes blink.

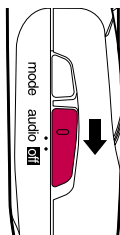


Note: If you leave the player in the pause mode for **three minutes** the player automatically enters a power-saving sleep mode.

Resume playback

While a track paused, press **>/□** and playback resumes.

Nokia Music Player – Memory card playback



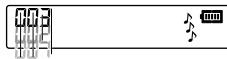
Stop playback/turn off

Slide the **audio/off** switch to **off**.

Selecting a track to play

Move forward a track

While a track is playing or paused, press **>>** with one quick press. Each time you press **>>** playback moves to the next track and the track number changes in the display.

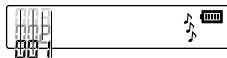


Move back to the beginning of a track

After a track has played over two seconds, press **<<** with one quick press. Playback returns to the beginning of the track.

Move back a track

After a track has played over two seconds, press **<<** with two quick presses. Playback moves to the track previous to the playing track and the track number changes in the display.



Nokia Music Player – Memory card playback

Scanning tracks

You can move forward or backward through a track quickly.

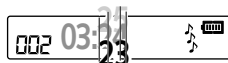
Scan forward in a track

While a track is playing or paused, press and hold **➡**. When you press and hold **➡**, the player scans forward through the track and playback is muted while the playtime count increases. When you release **➡**, playback begins again.



Scan backwards in a track

While a track is playing or paused, press and hold **⬅**. When you press and hold **⬅**, the player scans backwards through the track while the playtime count decreases. When you release **⬅**, playback begins again.

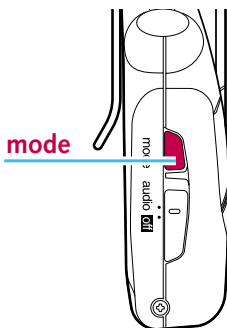


Selecting playback options

Play all tracks once

Press **mode**. **002 Play>>** is displayed. Within several seconds, press **⬅** or **➡** repeatedly until **002 Play-1** is displayed.

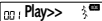
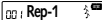
Nokia Music Player – Memory card playback



Repeat play of all tracks

Press **mode**.  is displayed. Within several seconds, press **<<** or **>>** repeatedly until  is displayed.

Repeat play of one track

While listening to the track that you want to repeat, press **mode**.  is displayed. Within several seconds, press **<<** or **>>** repeatedly until  is displayed.

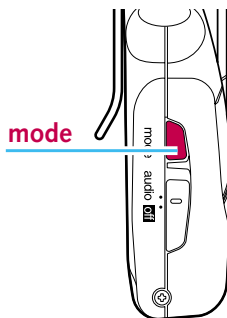
Play all tracks in random order

Press **mode**.  is displayed. Within several seconds, press **<<** or **>>** repeatedly until  is displayed.

Nokia Music Player – Memory card playback

Selecting playback tone

There are five different tone settings to enhance playback of your music. The five settings are; Normal, Classic, Rock, Jazz, or Custom. In the Custom setting you can adjust Bass and Treble. For maximum enjoyment of your recorded music select the tone setting that most closely matches the type of music you are listening to.



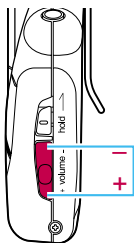
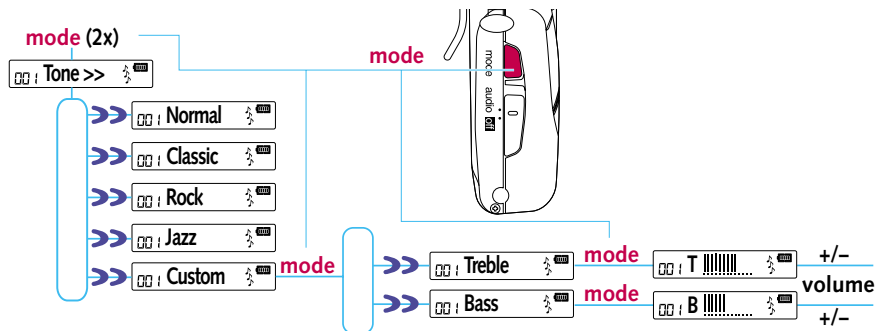
Select a tone setting

While a track is playing or paused, press **mode** twice. Tone>> is displayed. Within several seconds, press **<<** or **>>** repeatedly to select the tone setting you wish to use; Normal , Classic , Rock , Jazz , or Custom . The selected tone setting is applied to your music.

Select Custom tone setting

While a track is playing or paused, press **mode** twice. Tone>> is displayed. Within several seconds, press **<<** or **>>** repeatedly to select Custom . Within several seconds, press **mode** again. The display changes to Treble or Bass . Within several seconds, press **<<** or **>>** repeatedly to select between Treble or Bass .

Nokia Music Player – Memory card playback



Adjust Bass and Treble

While **Treble** or **Bass** is displayed press the **mode** and then the volume button up + or down - to adjust Bass or Treble.

Bass



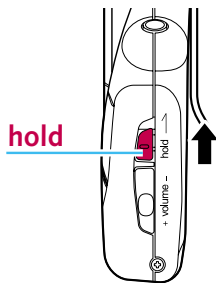
Treble




Nokia Music Player – Memory card playback

Button lock

This locks the buttons on your Nokia Music Player to prevent the buttons from being accidentally pressed (for example, when your Nokia Music Player is in your pocket).

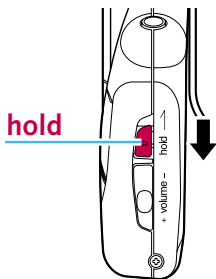


Lock the buttons

After adjusting your Nokia Music Player as you like it slide **hold** in the direction of the arrow.  is displayed. All buttons are locked.

Note: You can still answer the phone and make phone calls while connected to a Nokia mobile phone by pressing **?**.

If you place the Nokia Music Player in the sleep mode and then lock the buttons you can still resume playback by pressing **>/□**.



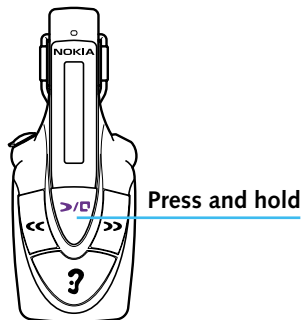
Unlock the buttons

If you want to unlock the buttons slide **hold** in the direction of the arrow. The buttons are unlocked.

Nokia Music Player – Memory card playback

Display lighting

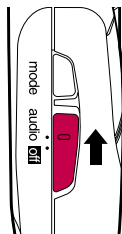
The display lights for several seconds whenever you press any of the keys on the Nokia Music Player. If you want to turn the display light on press and hold **>/□**. The display lights. When you release **>/□** the display light goes out.



Nokia Music Player – Tuning in your FM radio

Your Nokia Music Player also receives FM stereo radio broadcasts. Before you can listen to FM broadcasts you must insert a battery into your Nokia Music Player and attach the headphone cable. If you have not done these yet please see [Nokia Music Player – Getting started](#).

Note: The headphone cable is the antenna for your FM radio. If you wish to attach and use a different headphone cable make sure it is the same length as the original headphone cable.

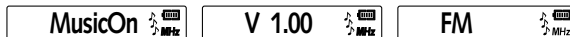


Turn on the music player

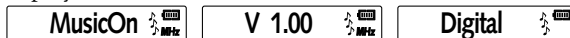
Slide the **audio/off** switch to **audio**.

Select playback from the FM radio

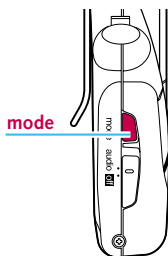
If the music player was last used for playback from the FM radio the display shows:




If the music player was last used for playback from the memory card the display shows:

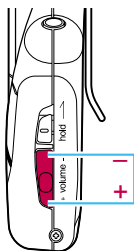


Nokia Music Player – Tuning in your FM radio



To switch from memory card playback to FM radio playback press and hold the **mode** key for *several seconds* until **FM**  is displayed. The frequency of the last selected FM radio station is then displayed. If the frequency selected is a broadcasting FM station you will hear the broadcast.

FM 99.9  MHz



Adjust volume

Press the volume button **+** or down **-** to adjust the volume.

Minimum



Maximum

Note:

The volume level is remembered by the Nokia Music Player. When playback resumes the volume returns to the last setting.

Nokia Music Player – Tuning in your FM radio

Selecting a frequency

Select a higher frequency

Press **>>** with one quick press. The frequency selected increases by 100 Hz and is displayed.

Press **>>** repeatedly with quick presses until the desired frequency is tuned in.



Select a lower frequency

Press **<<** with one quick press. The frequency selected decreases by 100 Hz and is displayed.

Press **<<** repeatedly with quick presses until the desired frequency is tuned in.



Nokia Music Player – Tuning in your FM radio

Using FM frequency auto-search

You can use the Nokia Music Player to automatically search for a FM stereo broadcast of sufficient strength for good reception.

Auto-search for a higher frequency

Press and hold **>>**. The frequency displayed changes as auto-search begins. Release **>>**. The Nokia Music Player automatically searches up the frequencies until a stereo broadcast of sufficient strength for good reception is found while increasing the frequency displayed. When a suitable station is found the frequency display stops changing.



Auto-search for a lower frequency

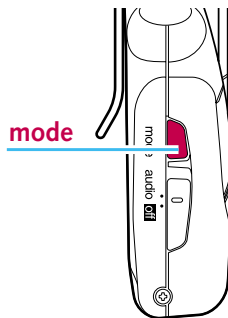
Press and hold **<<**. The frequency displayed changes as auto-search begins. Release **<<**. The Nokia Music Player automatically searches down the frequencies until a stereo broadcast of sufficient strength for good reception is found while decreasing the frequency displayed. When a suitable station is found the frequency display stops changing.



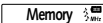

Nokia Music Player – Tuning in your FM radio

Using station presets

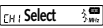
You can set up to five of your favorite FM stations for easy recall.



Select a frequency

When you have tuned in a station press **mode** twice.  is displayed and after two seconds  is displayed.

Assign a recall channel

While  is displayed, press **<<** or **>>** to assign a recall channel of **CH1** to **CH5**.



After you select a recall channel of **CH1** to **CH5** press **mode**.

 is displayed. Your selected frequency has been stored.

Nokia Music Player – Tuning in your FM radio

Recall a preset frequency

Press **>/□**. With each press of **>/□** the recall channels are displayed with the frequencies that have been stored in memory.




The recall channel and frequency you want to listen to is displayed. After two seconds you hear the selected frequency.


Switching stereo and monaural

Sometimes radio interference or a weak signal can cause your reception to become noisy. Switching to monaural may help to cancel the noise.

Select monaural

While listening to the radio, press **mode** with one quick press. The present stereo or monaural status is displayed. Press **<<** or **>>** to display Mono . Playback becomes monaural.

Select stereo

While listening to the radio, press **mode** with one quick press. The present stereo or monaural status is displayed. Press **<<** or **>>** to display Stereo . Playback becomes stereo.

Nokia Music Player – Using as a hands-free headset

When connected to your Nokia mobile phone the Nokia Music Player allows Hands-free Switching. You can listen to music and when there is an incoming call you can answer the phone and speak to the caller without touching the mobile phone. You can also dial out without touching your mobile phone by using voice dialing.

Note: Voice dialing is available when using Nokia 3310, 3330, 8250 and 8890 mobile phones.

What phones can be used?

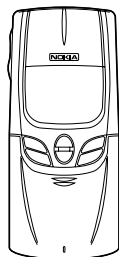
These Nokia mobile phones have been designed to work with your Nokia Music Player. Do not attempt to connect your Nokia Music Player to other phones.



Nokia 8210



Nokia 3310, 3330



Nokia 8850, 8890

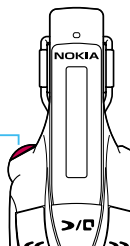


Nokia 8250

Nokia Music Player – Using as a hands-free headset

Connecting your Nokia Music Player and phone

Phone/PC connector

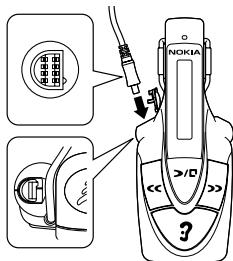


Remove the Phone/PC connector cap

Pry off the cap on the Phone/PC connector. The cap can be removed from the Phone/PC connector but stays attached to your Nokia Music Player.

Note: The cap is attached to your Nokia Music Player. Do not attempt to remove it.

To prevent dust, dirt or moisture from getting into the Phone/PC connector on your Nokia Music Player always replace the cap when not in use.



Connect your Nokia Music Player

Insert the phone cable into the Phone/PC connector, being careful to line up the pins.

Note: Always be careful when inserting or removing the cable. Grasp the cable by the thick portion just above the metal plug. Never insert or remove the cable by holding the cable portion itself.

Nokia Music Player – Using as a hands-free headset

Connect your Nokia mobile phone

Insert the phone cable into the connector on your Nokia mobile phone. The connector's position is slightly different depending on which model phone you have.



Nokia 8210



Nokia 3310, 3330



Nokia 8850*, 8890*



Nokia 8250

*** Note:**

Be careful not to scratch the phone cable connector when opening or closing the sliding cover of the phone.

Nokia Music Player – Using as a hands-free headset

Receiving and making calls

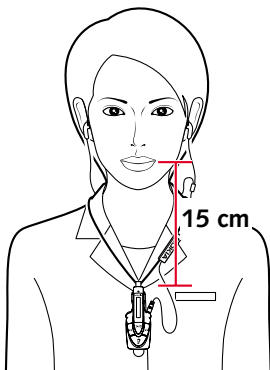
With the Nokia Music Player and Nokia mobile phone are connected you can receive and place calls with Hands-free Switching. Listen to your favorite music and when a call comes in the phone rings through your headphones and the music is muted, or when you place a call the Nokia Music Player automatically mutes the music. Also, your Nokia Music Player is equipped with a microphone so you can speak without touching the phone.

Note: Voice dialing is available when using Nokia 3310, 3330, 8250 and 8890 mobile phones.

If the microphone of the Nokia Music Player is too far from your mouth the microphone may pick up unwanted surrounding noise. For optimal voice pickup place the Nokia Music Player within about 15 cm of your mouth.

If your Nokia Music Player is off you can still place or receive calls through your Nokia mobile phone but sound *only comes through the left headphone*.

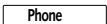
If the battery is exhausted or if there is no battery the Nokia Music Player must be off so you can place or receive calls.



Nokia Music Player – Using as a hands-free headset

Receiving a call

Receive a call

If your phone rings while you are listening to music a ringing tone sounds in your headphone.  is displayed. Press **3** for a second. The music is muted and if you are listening to music from a memory card, playback pauses. Begin speaking in a normal voice. You will hear the caller's voice in the headphone.

End call

When you have completed your call simply press **3** once again for one second. The phone call is disconnected and playback resumes.

Note: To maximize listening time from a battery turn off the Nokia Music Player when not listening to music. You will still be able to hear and talk through the headphone when the music player is off.

Placing a call

Even with your Nokia mobile phone in your pocket you can dial out very easily. Using both Hands-free Switching and voice dialing you can make a call without touching your Nokia mobile phone. Refer to the manual that you received with your Nokia mobile phone for more information on voice dialing.

Note: Voice dialing with the Nokia Music Player is supported for Nokia 3310 and 8890 mobile phones.

Nokia Music Player – Using as a hands-free headset

Activate your phone

Press and hold **?** for a second. The music is muted and if you are listening to music from a memory card, playback pauses. You will hear the voice starting tone through the headphone.

is displayed.

Voice dial

Speak the name of one of the numbers already recorded in your Nokia mobile phone. The recognized name plays back through the headphone and after a short wait the registered phone number is dialed. Speak in a normal voice when your party answers.

Note: If the phone fails to recognize the name, an error tone plays through the headphone. Start again from **Activate your phone** above.

Refer to your phone's users guide for important information about voice dialing.









End call

When you have completed your call simply press **?** once again. The phone call is disconnected and playback resumes.

Nokia Music Player – Hands-free Switching





There are different ways you can possibly answer and end calls when connected to a Nokia mobile phone. Below are explanations of the different methods. Please refer to the user manual that you received with your Nokia mobile phone for specific instructions on using your phone.

Receiving calls


Receive a call	End a call	Result
Press ? 	Press ? 	This is the recommended way of using Hands-free Switching. When you press ? to receive the call, the music is muted and if the music is being played back from the memory card playback pauses.
Press ? 	Press End 	When you press the ? to receive the call, the music is muted and if the music is being played back from the memory card the playback pauses. When you press End the call is ended and within five to ten seconds playback begins again, starting at a low volume and increases until it reaches the volume setting at the beginning of the call.
Press Answer 	Press ? 	When you press Answer you will hear the voice of the caller but playback of the music continues, mixed with the caller's voice. This is called Music Call. When you press ? the call is ended and the music continues.
Press Answer 	Press End 	When you press Answer you will hear the voice of the caller but playback of the music continues, mixed with the caller's voice. This is called Music Call. When you press End the call is ended and the music continues.

Nokia Music Player – Hands-free Switching


Placing calls

Place a call	End a call	Result
Press Call 	Press End 	When you press Call your phone dials and connects to the caller but playback of the music continues, mixed with the caller's voice. This is called Music Call. When you press End , the call is ended and the music continues.
Press Call 	Press ? 	When you press Call your phone dials and connects to the caller but playback of the music continues, mixed with the caller's voice. This is called Music Call. When you press ? the call is ended and the music stops. Press ? once again to begin listening to music.

Receiving SMS





	Result
Press Read 	The selected SMS arrival tone is played through the headphones. Operate your Nokia mobile phone normally to receive and display a SMS.

Sending SMS



	Result
Press Send 	Operate your Nokia mobile telephone normally to compose and send a SMS but no sound from key presses are heard through the headphones.

Nokia Music Player – Hands-free Switching

Voice dialing

Voice dial	Ending a call	Result
Press 3 and hold 	Press 3 	<p>Press and hold 3 for several seconds. The music is muted and if you are listening to music from a memory card, playback pauses. You will hear the voice starting tone through the headphone. Phone is displayed.</p> <p>Speak the name of one of the numbers already recorded in your Nokia mobile phone. The recognized name plays back through the headphone and after a short wait the registered phone number is dialed. Speak in a normal voice when your party answers.</p> <p>When you have completed your call simply press 3 once again. The phone call is disconnected and playback resumes.</p>
Activate voice dialing 	Press End 	<p>You must turn off your Nokia Music Player before voice dialing. Refer to your Nokia mobile phone user manual. When the call is over you can turn Nokia Music Player on again.</p>

Other Nokia mobile phones that support voice dialing

Voice dial	Ending a call	Result
Activate voice dialing 	Press End 	<p>You must turn off your Nokia Music Player before voice dialing. Refer to your Nokia mobile phone user manual. When the call is over you can turn Nokia Music Player on again.</p>

Nokia Music Player – Hands-free Switching

Volume settings and Music Call

Volume settings of the Nokia mobile phone and Nokia Music Player

When you answer or make a call with Music Call the volume of the voice on the phone is mixed with the music at the volume that has been set on the Nokia mobile phone. If you use the volume control of the Nokia Music Player to adjust the volume during the call, both the volume of the music and the caller's voice are adjusted simultaneously. If it is difficult to hear the caller's voice:

1. Lower the volume by using the controls on the Nokia Music Player.
2. Make the caller's voice louder by using the volume control on the Nokia mobile phone.

We recommend that you set the volume on your Nokia mobile phone low. Then, when a call comes in you can turn down the volume on your Nokia Music Player. Both the volume of the Nokia Music Player and the Nokia mobile phone are decreased. Then turn up the volume of your Nokia mobile phone, thereby raising only the volume of the caller's voice.

Nokia Music Player – Battery

While your Nokia Music Player is on the battery power indicator in the display shows you the present strength of the battery.



When the battery is at full power, five power bars show. As the battery weakens fewer and fewer power bars show.



When the battery power indicator shows no power bars, you have approximately five minutes of power left. When the battery is completely exhausted **LOW BATTERY** displays and the Nokia Music Player turns off. Until the battery is replaced the Nokia Music Player cannot be turned on. To replace the battery see [Installing the battery](#).



Nokia Music Player – Battery

Power-saving tips

- Under normal operating conditions, one Alkaline AAA battery supplies enough power to play music from the memory card for approximately five hours.
- When operated in a cold climate the battery life is considerably shorter and may supply enough power to play music from the memory card for only several hours. Keep the player covered and in a warm place.
- Leaving a battery in hot or cold places, such as in a closed car in summer or winter, reduces the capacity and lifetime of the battery. Always try to keep the battery between 15°C and 25°C (59°F and 77°F). If you use a overly hot or cold battery with your Nokia Music Player it may temporarily not work even if the battery has been fully charged.
- Although you can listen to music while talking on your connected Nokia mobile phone, it is a good idea to conserve the battery's power by turning the Nokia Music Player off for longer phone conversations. See [Hands-Free Switching](#).
- Always select good quality, well known brand batteries for your Nokia Music Player.
- Alkaline batteries are recommended for long life. NiMH is also usable. Do not use batteries identified as Ni-Cad, manganese or manganese dioxide or lithium batteries.

Nokia Audio Manager – Error messages

Question: I get an error message when I try to read a CD. What does this mean?

Answer: This indicates that there has been an error copying data from your CD-ROM drive. Let Nokia Audio Manager select the best settings for you by clicking the **Configure it for me** button in menu item **View > Options> ReadCD** tab.

Question: When I first start up Nokia Audio Manager, I get a message saying, “**Some of this program’s file types are no longer associated with it.**” What does this mean? Why does it keep happening?

Answer: Nokia Audio Manager supports a number for different file types. You can choose to have different file types automatically open and run in Nokia Audio Manager. Go to menu item **View > Options > File Types** tab and put a check mark beside the files you want to run in Nokia Audio Manager.
If you keep getting this message, it may be that there is another application on your machine that is taking over the association of these files when you exit the Nokia Audio Manager.

Question: When I **click copy to devices**, I receive the message **Unable to communicate with portable device**. What do I do?

Answer: There are several things to check if you get this message:

- Check that the battery in your Nokia Music Player is not exhausted. See **Battery**.
- Make sure your Nokia Music Player is connected properly with the supplied cable and turned on. See **Connecting to your personal computer**.
- On your computer desktop, check **My Computer > Control Panel > System > Device Manager > Universal Serial Bus Controller** to see if your Nokia Music Player is listed. The listed name is **Nokia Music Player HDR-1 Nokia Mobile Phones Ltd**. Click on the device listed and check its **Device Status**. The status should read **Working Properly**. If it is not listed, slide the **audio/off** switch to **off** and then back to **audio** and/or restart your personal computer.

Nokia Audio Manager – File types

Playable file types with Nokia Audio Manager

These are some of the file types that can be supported with the Nokia Audio Manager depending on the software plugins available. Please note that only some of the file formats can be used on the Nokia Music Player.

.721	G.721 Audio Files
.asf *	MS Media Playlist
.asx *	MS Media Playlist
.avi *	Microsoft Movie
.bmr	Universal Music Group Reference Files
.bmo	Universal Music Group Offer Files
.bmt	Universal Music Group Content Files
.cda	CD Audio Files
.lse	Nokia LSE DRM 
.mp3	MPEG Audio Files 
.mpg	MS Movie File
.m3u	Playlist File

.mov §	Quicktime Movie
.pls	PLS Playlist
.ra †	RealAudio Files
.ram †	RealAudio Streams
.saf ‡	DigiBox Audio Files
.sm3	Secure Audio Files
.smil	RA SMIL Files
.wav	Wave Audio files
.wax *	MS Media Playlist
.wm *	MS Media Playlist
.wma	Microsoft Windows Media Audio Files
.wmv *	MS Media Playlist
.wmx *	MS Media Playlist
.wvx *	MS Media Playlist

* Must have Windows Media Player installed to view.

† Must have Real Player installed to view.

‡ Must have InterRights Point installed.



§ Must have QuickTime installed to view.



Files that can be downloaded to Nokia Music Player.

Nokia CD Manager – Error messages

Question: Why did the Cancel Button error message display?

Answer: This message appears when you click the  button in the title bar of the program while reading a CD. To protect the CD reader, please use the  button instead.

Question: Why when I try to copy, rename or read a file does **Could not copy file** error message display?

Answer: The most likely reason that a file cannot be copied, renamed, or read is because it is already in use. If you have another music device open on your computer, close the device before continuing.

A file also cannot be copied, renamed, or read because it is not an audio file, or because it is written in a format that is incompatible with the Nokia Music Player.

Question: What does the **Device not attached** error message mean?

Answer: The Nokia CD Manager is unable to detect your device. Check the following:

- Is your device connected to the computer? See [Connecting to your personal computer](#).
- Is the USB cable firmly inserted into both the device and the computer?

Question: What does the **Free Space** error message mean?

Answer: There is not enough free space left on the memory card of the Nokia Music Player to complete the operation. Use **Delete Tracks** option of the **Media on Device** window to delete files from the memory card in your Nokia Music Player.

Question: What does the **Load an audio CD** error message mean?

Answer: Please load an audio CD into your CD-ROM drive and try again. The Nokia CD Manager cannot detect a CD in your CD-ROM drive. Check the following:

- Is the CD in your disk drive an audio CD?

Nokia CD Manager – Error messages

- Is the CD-ROM drive closed?
- Is the CD-ROM drive in use?

Nokia Music Player – Error messages

Question: **Unsupported Audio** is displayed on my Nokia Music Player.

Answer: You are attempting to play a file format that is not supported by the Nokia Music Player such as; WMA, image or other unsupported format.

Question: **Unusable Media** is displayed on my Nokia Music Player.

Answer: The memory card in your Nokia Music Player is not supported. Replace with the originally supplied memory card or other supported memory card. See [Memory card](#).

Question: **Unknown Format** is displayed on my Nokia Music Player.

Answer: Information on the memory card has been recorded in an unsupported file format. Music cannot be played. Reformat the memory card with Nokia Audio Manager in order to use with Nokia Music Player.

Question: **Read Error** is displayed on my Nokia Music Player.

Answer: The memory card may be defective or the power supplied may be uneven. Replace the batteries with new ones. If **Read Error** displays again discard the memory card and replace it with a new one.

Question: **Data Error** is displayed on my Nokia Music Player.

Answer: The selected track is corrupt and cannot be played. Press **◀** or **▶** to move to a different track.

Question: **DRM Error** is displayed on my Nokia Music Player.

Answer: There is a problem with the Digital Rights Management of the selected track and it cannot be played. Press **◀** or **▶** to move to a different track.

Question: **No Media** is displayed on my Nokia Music Player.

Answer: A memory card is not inserted or has been improperly inserted. Insert a memory card or check that it has been inserted properly. See [Inserting the memory card](#).

Nokia Music Player – Error messages

Question: **Format Error** is displayed on my Nokia Music Player.

Answer: This error might be displayed while formatting a memory card with Nokia Audio Manager. Try formatting the memory card again with Nokia Audio Manager. When **Format Error** is no longer displayed the error has been corrected.

Question: **No Track** is displayed on my Nokia Music Player.

Answer: No music tracks have been recorded to the memory card. Copy music tracks using Nokia Audio Manager or CD Manager. See [Transferring music to your memory card](#) (with Nokia Audio Manager) or [Copy to player and listen to music](#) (with Nokia CD Manager).

Question: **Connect Error** is displayed on my Nokia Music Player.

Answer: The Nokia Music Player is not properly connected to the PC with the USB cable or the memory card has been ejected while the Nokia Music Player is connected to the PC. Reinsert the memory card. See Inserting the memory card. Turn off and reconnect your Nokia Music Player to the PC. See [Connecting to your personal computer](#).

Nokia Music Player – Troubleshooting

Problem	Possible cause	Solution
The Nokia Music Player does not work.	Hold is on.	Turn Hold off.
	Memory card is not properly inserted.	Check memory card.
	The battery is dead.	Replace battery.
	Connected to the computer.	Disconnect from the computer.
I cannot hear anything.	Volume is set too low.	Adjust volume.
	Headphone cable is not inserted properly.	Check connection.
	Plug is dirty.	Clean and reinsert.
I hear noise.	Headphone or Phone/PC cable is wrapped around the player.	Uncoil cable from around the player.

Nokia Music Player – Troubleshooting

Problem	Possible cause	Solution
My caller can't hear my voice.	Microphone is too far from your mouth.	Place microphone within 15 cm of your mouth.
	Background noise is too loud.	Go to a quieter area.
"Can't find a portable device" message appeared.	Memory card is not properly inserted.	Insert memory card correctly.
	Nokia Music Player is not on.	Turn on player.
	USB cable is not properly connected.	Check connection.
I cannot close the memory card cover.	Memory card is not properly inserted.	Insert memory card correctly.
	Memory card is not the right kind.	Make sure the memory card is the same size as the original memory card.
Music stops, display freezes or keys don't work.	Firmware error.	Remove and reinsert batteries.

Nokia Music Player – Troubleshooting

Problem	Possible cause	Solution
Voice dialing does not work	Your phone does not support voice dialing when connected to the Nokia Music Player.	Voice dialing is supported only for Nokia 3310 and 8890 mobile phones.
	Your Nokia mobile phone is not properly set for voice dialing.	Refer to the instructions that came with your Nokia mobile phone.
	Your Nokia Music Player is not properly connected to your Nokia mobile phone.	Check connection.

Care and maintenance

Nokia Music Player

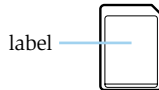
Your Nokia Music Player is a product of superior design and craftsmanship and should be treated with care. The suggestions below will help you to fulfill any warranty obligations and to enjoy this product for many years. When using your Nokia Music Player:

- Keep it and all parts out of the reach of small children.
- Keep it dry. Precipitation, humidity and liquids contain minerals that corrode electronic circuits.
- Do not use or store in dusty, dirty areas. Moving parts can be damaged.
- Do not store in hot areas. High temperatures can shorten the life of electronic devices, damage batteries, and warp or melt certain plastics.
- Do not store in cold areas. When the music player warms up (to its normal temperature), moisture can form inside the player, which may damage electronic circuit boards.
- Do not attempt to open. Non-expert handling of the device may damage it.
- Do not drop, knock or shake it. Rough handling can break internal circuit boards.
- Do not use harsh chemicals, cleaning solvents, or strong detergents to clean it. Wipe it with a soft cloth slightly dampened in a mild soap-and-water solution.
- Do not paint it. Paint can clog the device's moving parts and prevent proper operation.

- Use only supplied cables and attachments. Unauthorized modification or attachments could damage the music player or result in less than satisfactory performance.
- If your Nokia Music Player, any parts or accessories do not work properly, take them to your nearest qualified service facility. The personnel there will assist you and, if necessary, arrange for service.

Memory card

- When buying a new MMC (Multimedia Card) card, affix the accompanying label to the specified location on the card. Do not affix anything else to the card. Write on the label before affixing it to the card. If the label is to be written on after it has been affixed to the card, be sure to use a felt-tip pen (oil based). Do not use a pencil or ballpoint pen.



- Use only MMC (Multimedia Card) cards in your Nokia Music Player.
- If you wish to purchase replacement or additional memory cards buy a memory card that is the same size as the one supplied with this device. Bring your original memory card to the store where you will purchase a new card and make sure it is the

Care and maintenance

same size. All cards of the same size work with your Nokia Music Player.

- Keep all memory cards out of the reach of small children.
- The memory card and its contacts can easily be damaged by scratches or bending, so be careful when handling, inserting or removing the card.
- Before installing the memory card, always make sure that the Nokia Music Player is switched off.
- Do not use or store the memory card in high temperatures, direct sunlight or high humidity. Avoid conditions that cause condensation on the card.
- Keep the card away from corrosive materials.
- Avoid touching the electrical contacts.
- Do not insert the memory card into any other device such as a digital camera as damage or loss of information can occur.

- Leaving a battery in hot or cold places, such as in a closed car in summer or winter, reduces the capacity and lifetime of the battery. Always try to keep the battery between 15°C and 25°C (59°F and 77°F). If you use a overly hot or cold battery with your Nokia Music Player it may temporarily not work even if the battery has been fully charged.
- Batteries must be recycled or disposed of properly. Do not dispose of batteries in municipal waste!

Battery

- The Nokia Music Player uses one AAA battery. Do not attempt to use other size batteries.
- Turn off your Nokia Music Player before opening the battery compartment and replacing the battery.
- You may use rechargeable batteries in the Nokia Music Player. Before recharging any battery make sure that the battery was designed to be recharged and that you are using the proper device for recharging.

Specifications

Personal computer

Item	Requirement
PC	IBM PC/AT compatible.
CPU	Pentium MMX 266 MHz required. Pentium 300 MHz recommended.
Memory	Minimum 48 MB recommended. 64 MB suggested for Windows 2000.
Hard disk	35 MB of free space is required to install the software. Additional free space is necessary for music files.
Operating System	Windows 98/Windows ME/Windows 2000. This software cannot be used on a computer running Windows 95/3.1 or Windows NT. Furthermore the software is not supported on a homemade PC with Windows 98 installed and/or a computer which has had its system upgraded from Windows 95/3.1 to Windows 98.
Display/Monitor	More than 800 x 600 pixels. More than 65,536 colors, High Color setting.
Browser	Microsoft Internet Explorer or Netscape Navigator, versions 4.0 or higher.
Import file formats supported	ACC, MP3, WAV, CD-DA (music CD)
USB	Version 1.0/1.1 or above.
CD-ROM drive†	SCSI/ANSI X3T10-1048D standard. ATAPI/SFF-8020i standard.
Recommended Soundcard*	Sound Blaster 16 (recommended)

Notes: *The soundcard is not required but without it playback of music with the Nokia Audio Manager on the personal computer will not be possible.

†CD-ROM speeds may affect quality of encoding

Specifications

Memory card

Buy a new card

All Multimedia Cards (MMC) should work with it. If you wish to buy new, or additional memory cards, compare the new card with the card that you have to be sure it is the same size. Due to continual development of new cards and standards some cards released in the future may not work correctly in your Nokia Music Player.

Select memory card size

Both 32MB and 64MB size cards are supported.

Specifications

Suggested encoding bit rates

Nokia Music Player has been especially designed to give you a full 64 minutes of music time on a 32MB memory card when encoded with AAC.

kBit/s	Music quality		Capacity on a 32MB card (minutes)	Reduction ratio
	MP3	AAC		
128	Good	*Best	32	11.15 : 1
96	OK	*Better	48	15 : 1
64	Poor	*Good	64	22.5 : 1

To set the encoding bit rate to use with your Nokia Music Player see **View > Options > Read CD > Bit Rate** in Nokia Audio Manager.

***Note:** Best = Professional quality
Better = CD quality
Good = Near CD quality

Upgrading – Nokia Audio Manager

Nokia Audio Manager V1.0 and Nokia CD Manager are standard systems bundled with the Nokia Music Player.

As long as the end user frequently visits club.nokia.com and registers their Nokia Music Player serial number during install and at the Club Nokia web site, there may be upgrade opportunities available to add features to Nokia Audio Manager, Nokia CD Manager and Nokia Music Player. Other downloadable files may be available.

Definitions

AAC: AAC stands for Advanced Audio Coding, an encoding format developed by Dolby, Fraunhofer, AT&T and Sony. AAC is the next generation after MP3. It takes up much less space on your hard disk or memory card.

Bit rate: Bit rate is generally the sample rate multiplied by the number of “bits per sample.” When we sample the music, the amplitude or volume has a range that we want to capture, from very soft to quite loud. That range has to get expressed in digital terms of bits. One bit gets you “on or off,” not exactly high fidelity. Eight bits gets you 256 levels, which is not at all bad for speech. Moving up to twenty four bits gets you a whopping 16 million levels, which is way more than the human ear can actually perceive. So, you take your sample rate and the chosen number of bits per sample, multiply them together and shove them down a single piece of wire. This gives you a “bit rate.” In general, the higher the bit rate, the better the sound quality of the resulting file.

CD quality: CD quality files provide superior sound quality. CD quality files are the least compressed of your digital music files and will take up more space on your hard drive. If you select AAC or MP3 format in menu item **View > Options > Read CD** tab, you have five choices of quality ranging from a compression rate of 112kBit/s at 11.25 : 1 to 320kBit/s at 4.4 : 1.

Digital Rights Management: Digital Rights Management (DRM) is the system for end-to-end copyright protection, content distribution management, content payment and billing management, to assure the content holders can manage their digital rights.

Firewall: A system that enforces an access policy between an organization’s network and the Internet for purposes of security. A firewall can limit access and/or some forms of communication between computers inside an organization and those on the Internet.

Firmware: Software that enables the Nokia Music Player to operate. The core software for the system.

Definitions

FM radio quality: FM radio quality is the lowest sound quality. These files take up the least amount of space. If you choose AAC or MP3 format under menu item **View > Options > Read CD** tab, you will record at 64kBit/s at 22.5 : 1 compression.

Genre: A genre is distinctive style or subgrouping of artistic composition.

ISP: Internet Service Provider. The company through which users connect to the Internet.

MP3: MP3 stands for MPEG (Motion Picture Experts Group) Layer 3. MP3 is a music file format, which is small in size but big in quality. MP3 files are audio files that have been compressed so that they take up less space on your hard drive. For example, a track in MP3 format that is 3,062KB in size would be a whopping 33,746KB in .wav format.

Near CD quality: If you have a limited amount of hard disk space, Near CD quality is a good choice for reading a CD. The sound quality is quite close to CD quality, but the files are smaller. If you choose AAC or MP3 in menu item **View > Options > Read CD** tab, you have two choices of Near CD quality recording. These are 96kBit/s at 15 : 1 or 80kBit/s at 18 : 1 compression.

Sample rate: Sample rate is how often you look at or “sample” the continuously varying signal we call music.

Upgrading: Getting the latest version of the firmware or software.

WMA: WMA stands for Windows Media Audio.