



18.10.99

Quick Guide to Using the Nokia 8210 with an Infrared data connection in a Windows CE device

INSTALLATION OF THE NOKIA 8210 IRDA SUPPORT ON A WINDOWS CE DEVICE

1. Unzip the Setup.zip file.
2. Read the Readme.txt and licence.txt documents.
3. Connect your Windows CE device to your PC using the "Windows CE services" software provided by Microsoft.
4. Run the Setup.exe in the PC. First you will see the Nokia IrDA update setup window.



Figure 1: *Nokia IrDA Update Setup.*

5. Click *Setup* – Now your PC is establishing a connection to a Windows CE device.
6. If the PC – Win CE connection is not active you will see the warning (Figure 2). Click OK and activate the connection between your PC and the Windows CE device.



Figure 2: *Pending application Install.*



Figure 3: *Connecting to your Windows CE device.*

7. Click Yes.

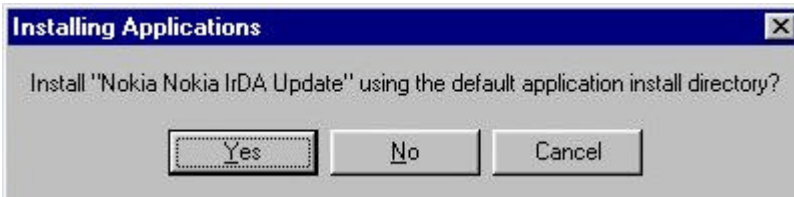


Figure 4: *Installing applications.*

8. Your PC is now installing files to your Windows CE device.

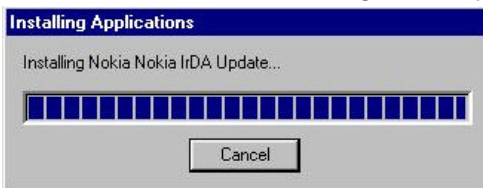


Figure 5: *Installing files.*

9. Now file installation is ready. Click OK.

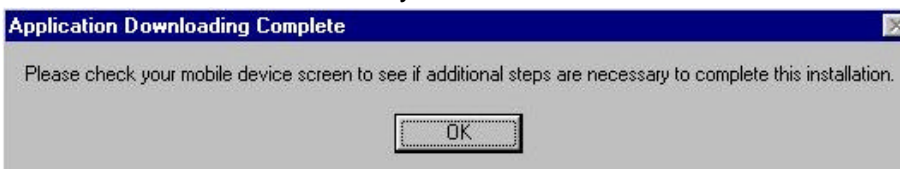


Figure 6. *File installation complete.*

Some additional steps are required in your Windows CE device:

10. Disconnect your Windows CE device from the PC.
11. Open Start - Programs and run the Nokia Modem software in the Win CE device.
12. First you will see the IrDA update window: "This Program Updates the registry for the IrDA connection on COM3 or on the first unused COM-port above COM4: (autoscan) it will enable you to use an infrared connection to the Nokia 8210 mobile phone".
13. Primarily use COM3 but if you are sure that COM3: is not available then use the autoscan option.
14. Wait a few seconds. You will see the IrDA Update window: "Infrared port is now COMx:. Please, reset (boot) your handheld PC next". Remember this number (COMx) for further usage.
15. Reset your CE device. Refer to your Windows CE device User Guide for more information. Now you have a new communication port "Nokia Phone on Infrared Port". Use this modem in all applications.
16. Test driver functionality. You can use for example remote networking.
- if you have problems please try again by executing Nokia Modem software.

Note: You must activate the infrared connection in the Nokia 8210 phone every time you want to use it. You will see the flashing infrared sign on the phone when it is waiting for the infrared connection and a stationary infrared sign on the phone when the connection is active.

PRACTICAL HINTS & TROUBLESHOOTING:

There are significant differences in the power supply capability of different brands/models of Microsoft Windows CE 2.0/2.1 compatible PCs. Nokia takes no responsibility for possible damage caused by the increased power demands required for an Infrared connection. Consult your handheld PC dealer for information on the power supply issues relevant to infrared device usage.

It is an advantage to have "PalmExplorer" in the Casio Cassiopeia E-10 or in a similar Windows CE device that has no keyboard.

You can remove the Infrared installer by removing files:

\\windows\programs\Nokia Modem

\\Program files\Nokia IrDA Update

This driver is tested with:	COM3
Casio Cassiopeia E-10	OK
Hewlett Packard 620LX	OK
Sharp HC-4500	OK
Hitachi HPW-200EC	OK
Hewlett Packard 680 (Jornada)	OK
Hewlett Packard 820 (Jornada)	OK

Legal Notice

The contents of this document are copyright © 1995 – 1999 Nokia. All rights reserved.

Reproduction, transfer, distribution or storage of part or all of the contents in any form without the prior written permission of Nokia is prohibited.

Nokia is a registered trademark of the Nokia Corporation. Nokia product names are either trademarks or registered trademarks of Nokia. Other product and company names mentioned herein may be trademarks of their respective owners.

The contents of this document are provided "as is". Except as required by the applicable law, no warranty of any kind, either express or implied, is made in relation to the accuracy, reliability or content of the document. Nokia reserves the right to revise the document or withdraw it at any time without prior notice.

Nokia is not responsible for any loss of data, income or any consequential damage howsoever caused.