



This Quick Guide is a generic guide for all Nokia 88xx series and 8210 phones. When you are asked to select the modem you will see *Nokia \*\*\*\**, please select one of the following:

Nokia 8810	Nokia 8810
Nokia 8850	Nokia 8850
Nokia 8210	Nokia 8210

## Quick Guide to Using your Nokia Phone with Windows 95 Fax - Exchange for Windows 95 or Windows Messaging for Windows 95

### 1. Installing and setting up

This guide assumes that you have already installed your Nokia Phone on your computer.

Microsoft Windows 95 fax support can be installed with the Windows 95 mail application (exchange or messaging - hereafter called mail in this document).

1. Ensure that you have fax and mail components installed on your computer. This can be done by opening the Control Panel and clicking 'Add/Remove Programs'. Select the 'Windows Setup' window (Figure 1).

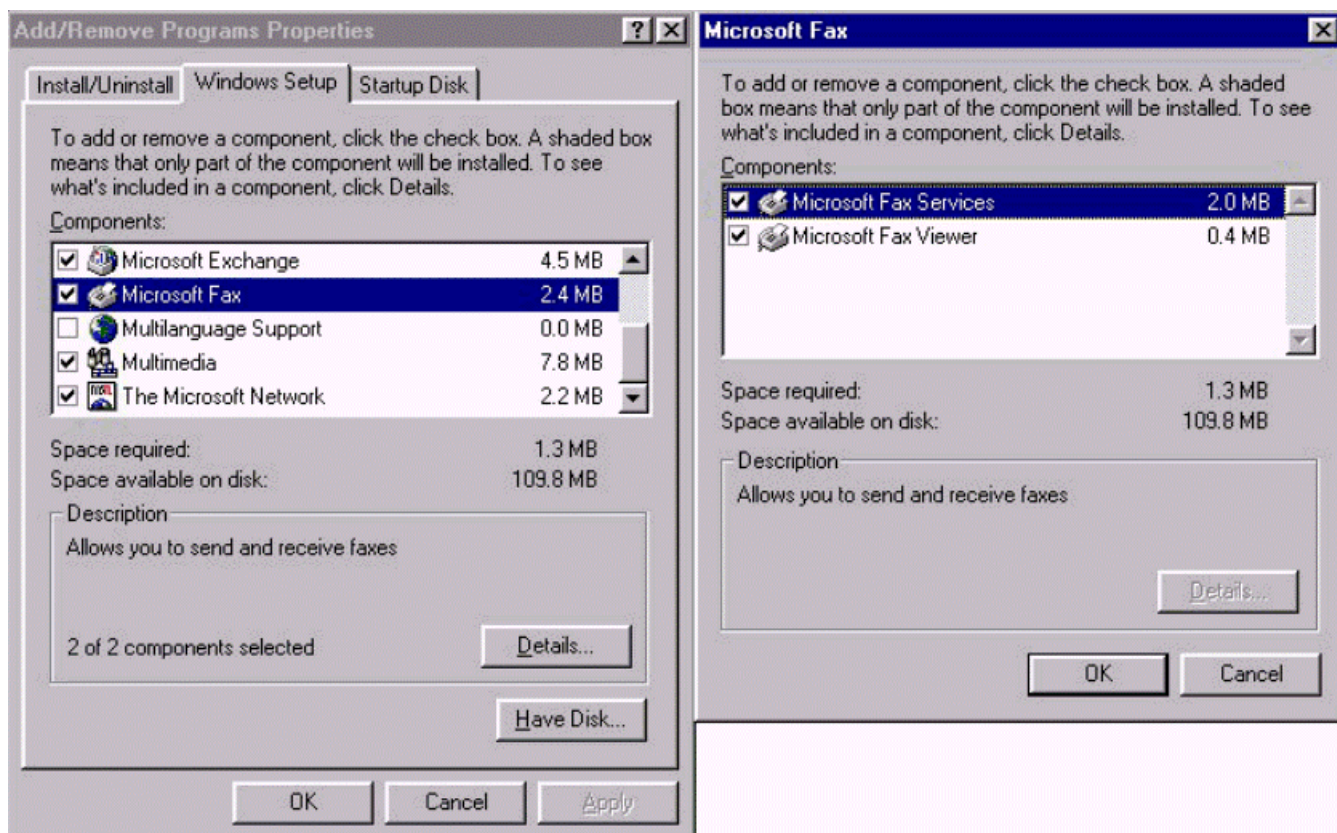


Figure 1. Installing Windows 95 fax components.

You can install fax support for mail the first time you start mail or later by clicking the mail icon in the Control Panel or selecting **Tools - Services..** in mail.

2. If Microsoft Fax does not appear in the Services window, you can install it by clicking the **Add...**- button and selecting the Microsoft Fax option in the Add Service to Profile window.
3. Click **OK** (Figure 2).

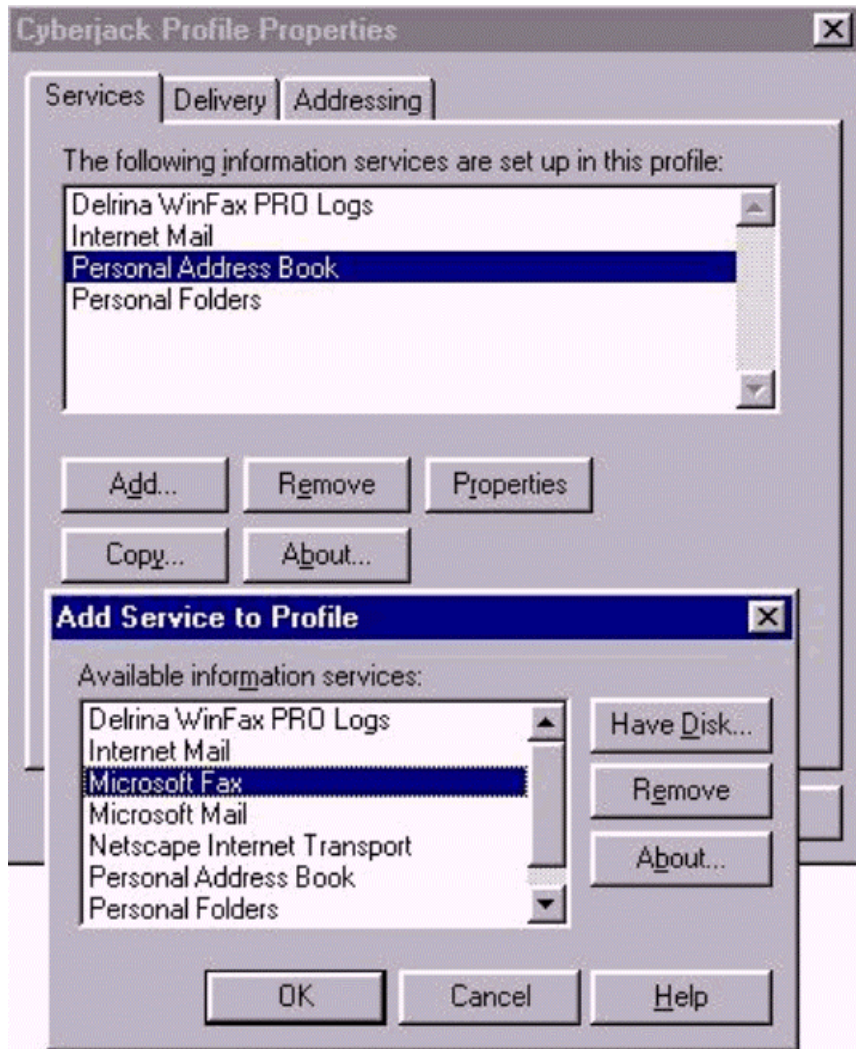


Figure 2. Adding Microsoft Fax at Windows 95 mail.

4. Next you must give the information needed in the fax application. Click the **Yes**- button shown in Figure 3.

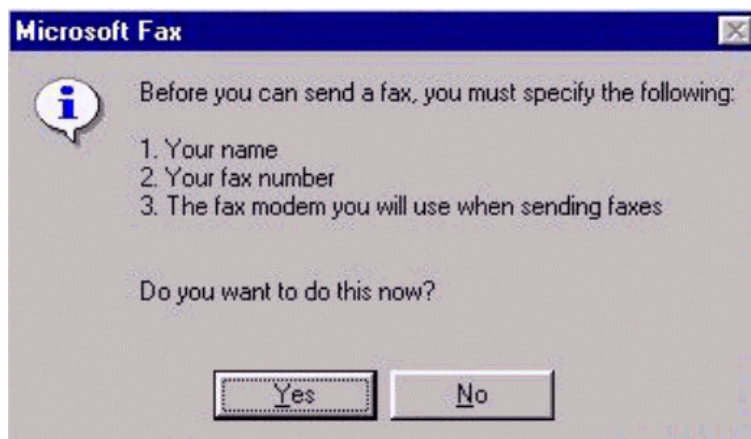


Figure 3. Confirmation of fax support installation for mail.

5. Enter the required information (Figure 4.)

The screenshot shows the 'Microsoft Fax Properties' dialog box with the 'User' tab selected. The dialog has four tabs: 'Message', 'Dialing', 'Modem', and 'User'. The 'User' tab contains a message icon and text stating: 'The information you enter here may be displayed on the fax cover page and gives the recipient your return fax address'. Below this, there are several input fields: 'Your full name:' with the value 'Nokia'; 'Your return fax number:' section containing 'Country:' (Finland (358)), 'Fax number:' (050), and 'Mailbox (optional)'; 'Company:' (Nokia), 'Title:', 'Address:', 'Department:', 'Office Location:', 'Home telephone number:', and 'Office telephone number:'. At the bottom are 'OK' and 'Cancel' buttons.

Microsoft Fax Properties			
Message	Dialing	Modem	User
The information you enter here may be displayed on the fax cover page and gives the recipient your return fax address			
Your full name: Nokia			
Your return fax number:			
Country:	Finland (358)		
Fax number:	( 050 )		
Mailbox (optional):			
Company:	Nokia	Title:	
Address:		Department:	
		Office Location:	
Home telephone number:			
Office telephone number:			
OK		Cancel	

Figure 4. User information for Microsoft mail.

6. Select your fax modem from the 'Available fax modems' box and click the 'Set as Active Fax Modem' button below (Figure 5).



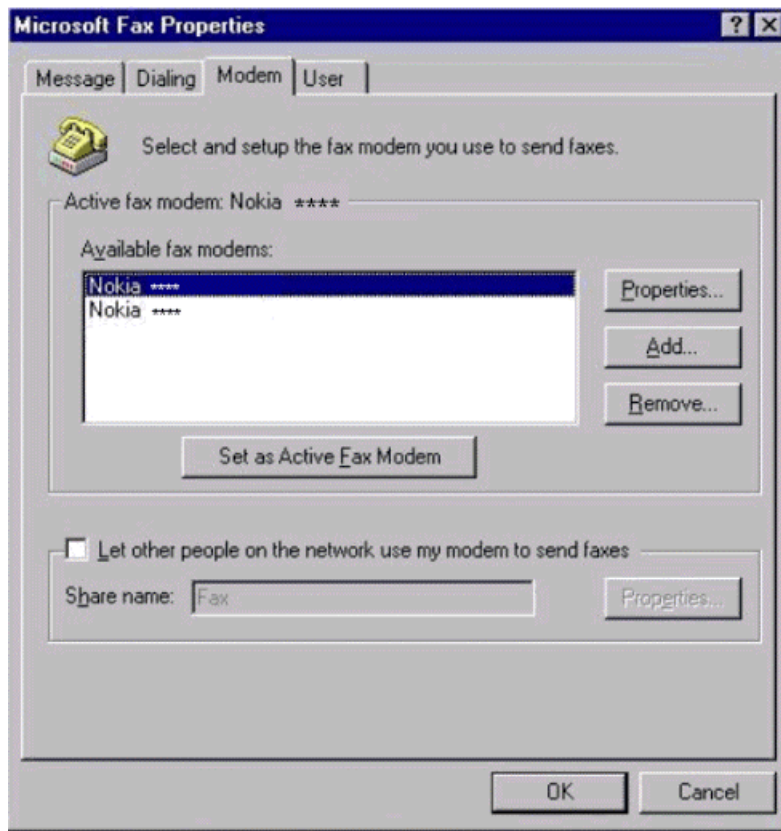


Figure 5. Select the fax modem you want to use with your fax.

You may also change the modem's properties or add a new modem.

Click the '**Properties..**' button. Set the answer mode to the 'Answer after # rings' if you want to receive faxes. Set the speaker volume control to the off position. Click the '**Advanced...**' button. You must check 'Use Class 2 if available' to obtain the best functionality - Class 2 is slightly slower than Class 1, but it is more reliable (Figure 6). Close the Modem properties window and click the '**OK**' button.

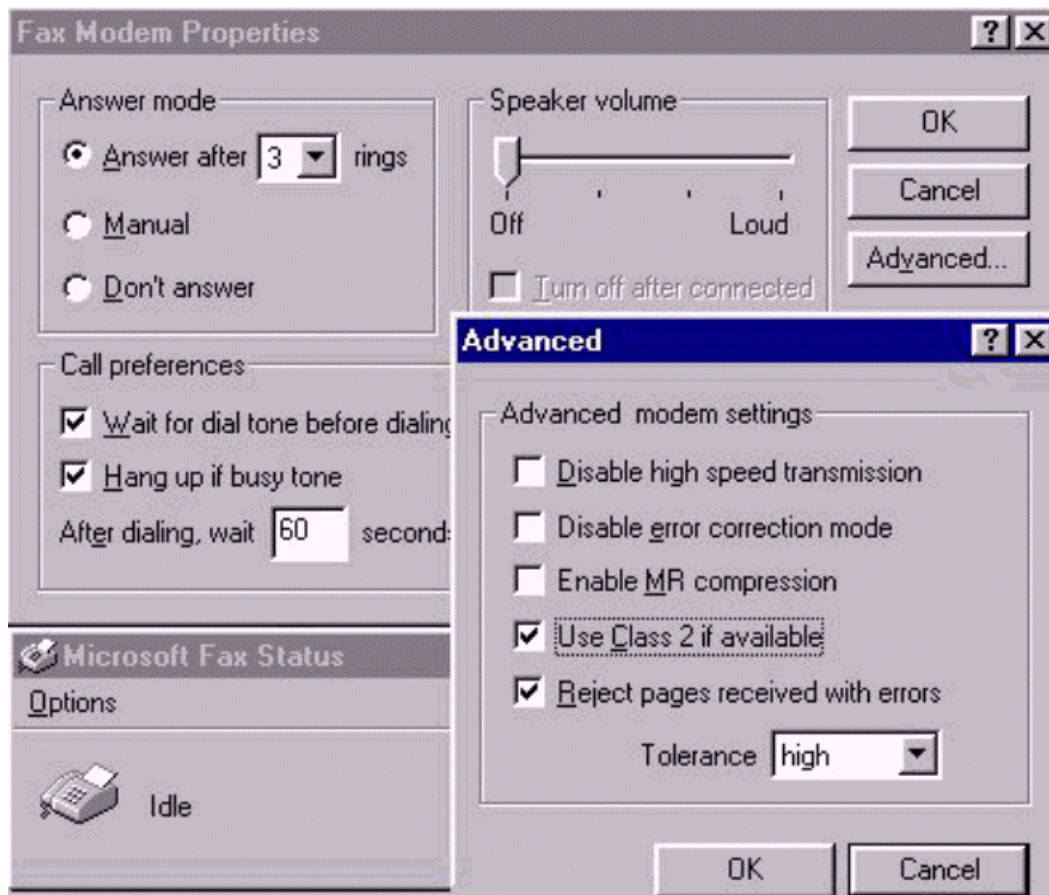


Figure 6. Modem properties and advanced settings.

Now the fax support is installed in your mail application. You have a new menu: **Start - Programs - Accessories - Fax**. There you can find the Compose new fax, cover page editor and request a fax applications.

## 1.1 Sending a fax

After installation you can send a fax from mail by selecting **Compose - New Fax** or directly from the application, for example Write, by using **Microsoft Fax as default printer** (Figure 7). Check that the information in 'Print to the following port' box is correct. The third way to send a fax is to open **Start - Programs - Accessories - Fax** and select **Compose New Fax**.

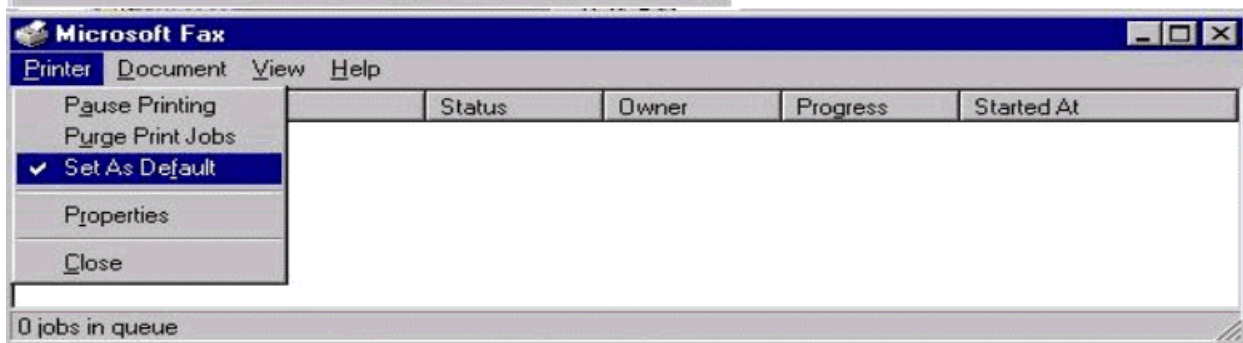
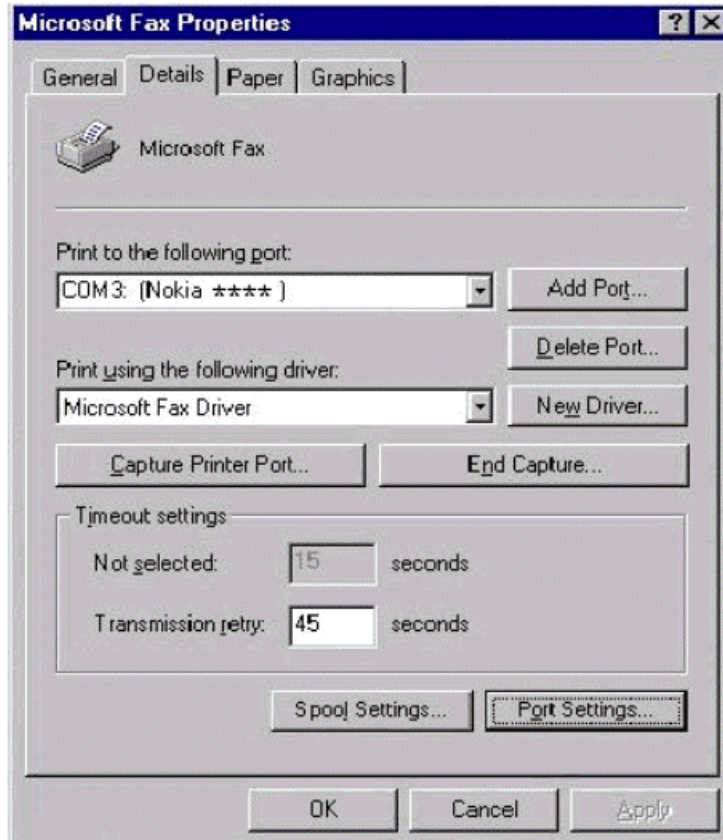


Figure 7. Setting Microsoft Fax as the default printer.

The fax wizard starts automatically when you send a fax. Fill in the recipient's name and fax number. Click '**Add to list**'. You may define as many recipients as you want. After that click '**Next**' (Figure 8).



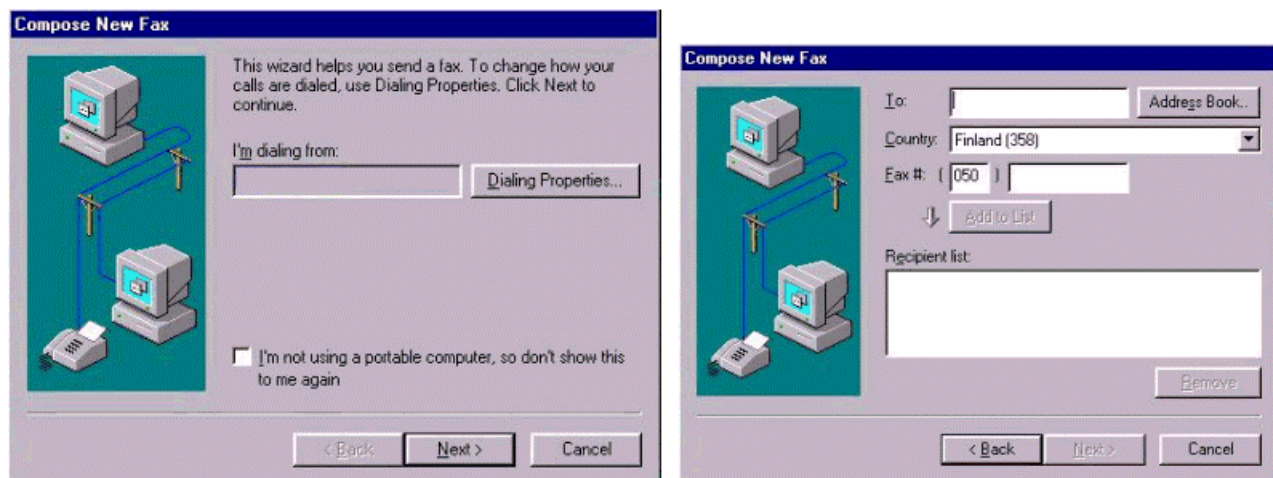


Figure 8. Sending a fax.

Then you may select the cover page. After that you may write your message (Figure 9).

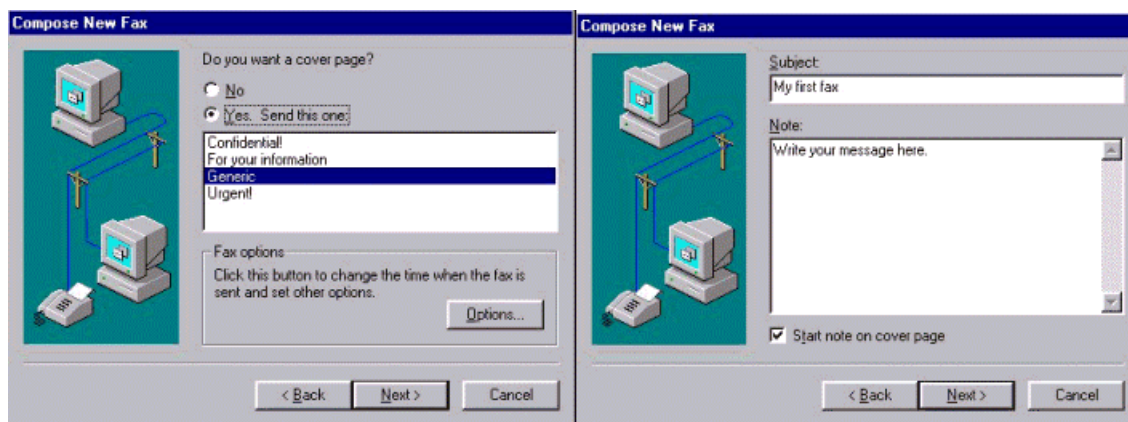
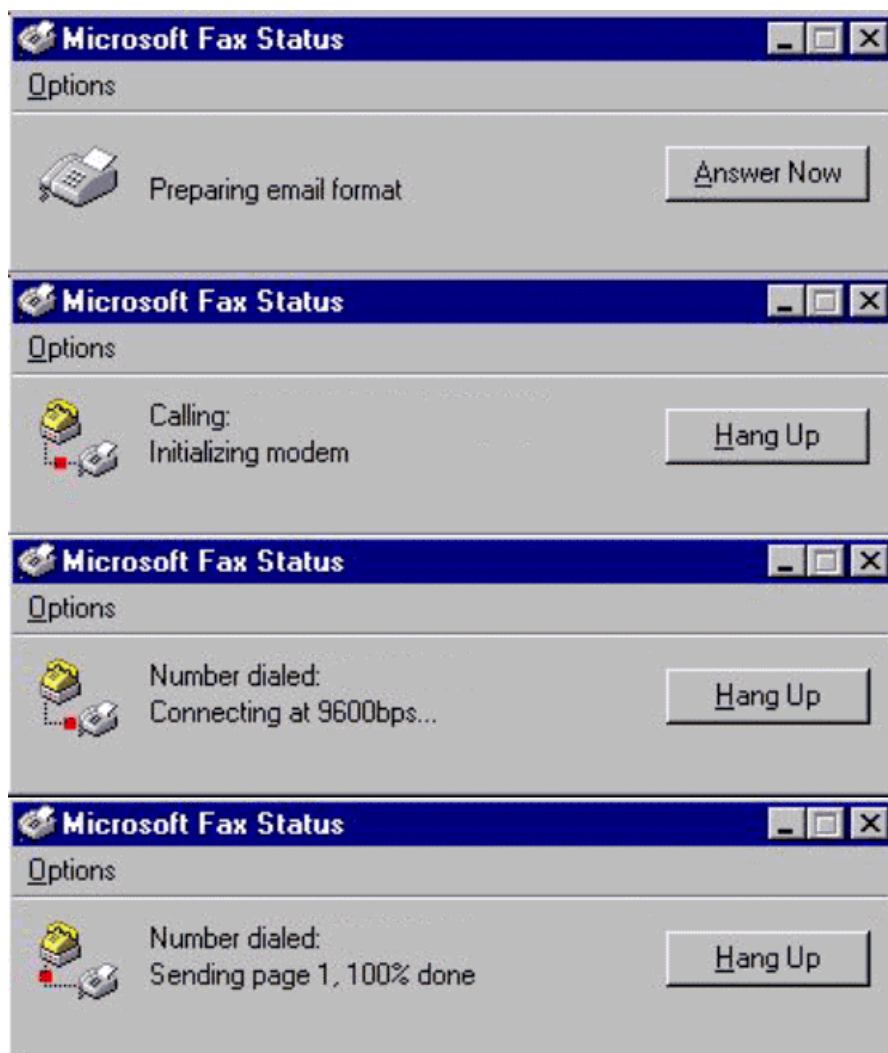


Figure 9. Selecting a cover page and writing a message.

Next you may add a text file to your fax. Now your fax is ready to send. Click the '**Finish**' button.

The progress of the fax transmission will be shown step by step (Figures 10-13).



figures 10-13. Fax sending process.

## Receiving

You must have either the 'Answer after # rings' or the 'Manual answer' option on, in Fax modem properties, if you want to receive a fax (Figure 6). If you have a Nokia Phone connected to your computer via IrDA, the phone on and in service and autoanswer enabled, Microsoft fax will answer incoming fax calls automatically.

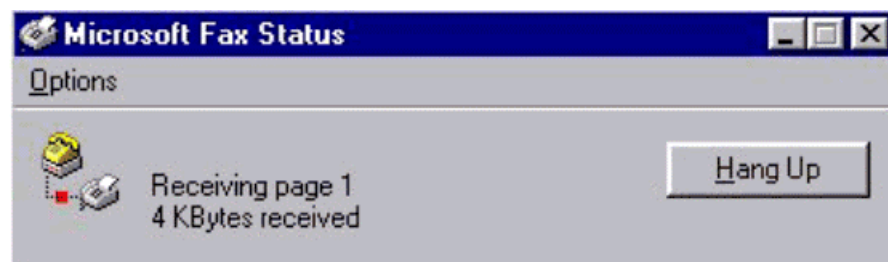


Figure 14. Microsoft fax receiving a fax



## LEGAL NOTICE

Copyright © Nokia Mobile Phones 2000. All rights reserved.

Reproduction, transfer, distribution or storage of part or all of the contents of this document in any form without the prior written permission of Nokia is prohibited.

Nokia and Nokia Connecting People are registered trademarks of the Nokia Corporation. Other product and company names mentioned herein may be trademarks or tradenames of their respective owners.

Nokia operates a policy of continuous development. Therefore we reserve the right to make changes and improvements to any of the products described in this document without prior notice.

Under no circumstances shall Nokia be responsible for any loss of data or income or any special, incidental, consequential or indirect damages howsoever caused.

The contents of this document are provided "as is". Except as required by the applicable law, no warranties of any kind, either express or implied, including, but not limited to, the implied warranties of merchantability and fitness for a particular purpose, are made in relation to the accuracy, reliability or contents of this document. Nokia reserves the right to revise this document or to withdraw it at any time without prior notice.