



SUPPORT GUIDE FOR PC SUITE AND DIAL-UP OVER BLUETOOTH for the Nokia 6210

NOKIA

Contents

1. INTRODUCTION	1
2. SYSTEM REQUIREMENTS	1
3. USING THE NOKIA PC SUITE OVER BLUETOOTH	1
4. USING PC SUITE 4.0 OR DIAL-UP CONNECTION VIA BLUETOOTH	6

Legal Notice

Copyright © Nokia Mobile Phones 2001. All rights reserved.

Reproduction, transfer, distribution or storage of part or all of the contents in this document in any form without the prior written permission of Nokia is prohibited.

Nokia and Nokia Connecting People are registered trademarks of the Nokia Corporation. Other product and company names mentioned herein may be trademarks or tradenames of their respective owners.

Nokia operates a policy of continuous development. Nokia reserves the right to make changes and improvements to any of the products described in this document without prior notice.

Under no circumstances shall Nokia be responsible for any loss of data or income or any special, incidental, consequential or indirect damages howsoever caused.


The contents of this document are provided "as is". Except as required by applicable law, no warranties of any kind, either express or implied, including, but not limited to, the implied warranties of merchantability and fitness for a particular purpose, are made in relation to the accuracy, reliability or contents of this document. Nokia reserves the right to revise this document or withdraw it at any time without prior notice.

1. INTRODUCTION

This guide briefly describes how to begin using the Nokia PC Suite 4.0 and Dial-Up over Bluetooth. For more detailed information on the use of different applications included in the Nokia Connectivity Pack, please refer to Quick Guides, which can be found at <http://www.forum.nokia.com>.

2. SYSTEM REQUIREMENTS

To use the Nokia PC Suite 4.0 and Dial-Up, you need:

- An Intel-compatible PC equipped with Windows 98/Me or Windows 2000
- It is also assumed that you have installed the following applications
 - The Bluetooth Software Suite (Bluetooth functionality)
 - The Nokia PC Suite 4.0 and
 - Modem Setup
- A Free PC-CARD slot
- A Nokia 6210 phone with fairly new software
 - Once you have inserted the Connectivity Battery LRW-1 into your Nokia 6210, make sure the  icon is visible in the upper left-hand corner of your phone's display when the power is switched on. If not, please contact your Nokia dealer for further information on a software upgrade.

3. USING THE NOKIA PC SUITE OVER BLUETOOTH

PC Suite 4.0 features over Bluetooth wireless technology:

The following PC features can be used wirelessly and outside the range of your direct line-of-sight even if your Nokia 6210 is in your pocket or carrying case, for example.

The Nokia PC Suite 4.0 features are:

- PC Sync
- PC Graphics
- PC Composer
- Nokia Phone Editor
 - Contact Editing
 - SMS (supports long messages)
 - Handling Profiles and Caller Groups

3.1 NOKIA PC SYNC

Synchronize calendar and contact data with e.g. Microsoft Outlook, Lotus Organizer and Lotus Notes using **Nokia PC Sync**:



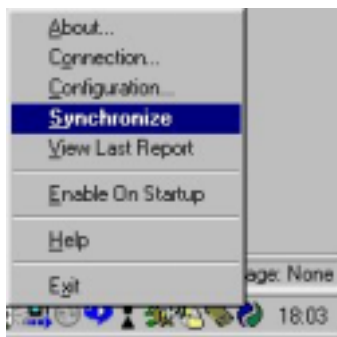
When PC Sync is ready for synchronization you will see the following icon on the taskbar in the bottom right-hand corner of the screen.



If PC Sync is not ready the following icon will appear:



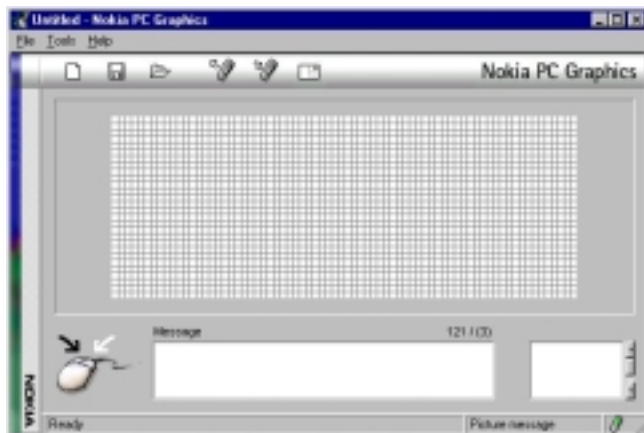
You can begin synchronization from the user interface of PC Sync by clicking the "Synchronize Now" button or by "right-clicking" the mouse on the PC Sync icon on the taskbar in the bottom right-hand corner of your screen and selecting "Synchronize" from the menu:



3.2 NOKIA PC GRAPHICS

Allows you to create your own picture messages and group graphics and to do the following:

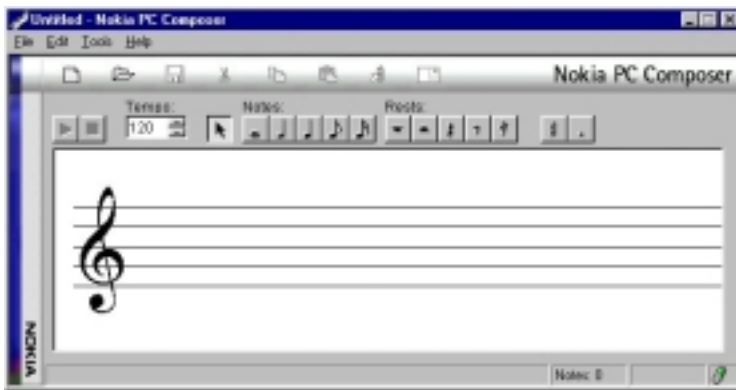
- Open BMP files and create group graphic or picture messages
- Update directly to your Nokia 6210
- Send messages to another Nokia phone that supports picture messages or group graphics using the GSM network



3.3 NOKIA PC COMPOSER

Enables the creation of your own ringing tones and allows you to:

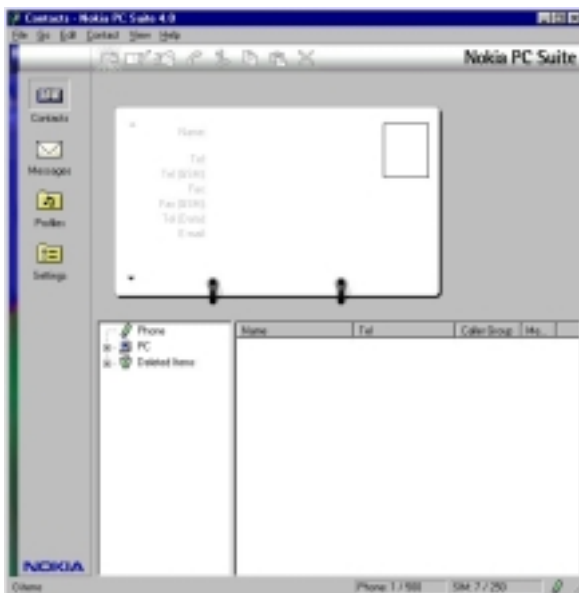
- Open mid and midi files and convert them into a Nokia ringing tone
- Update ringing tones straight to your Nokia 6210
- Send ringing tones to other Nokia phones over the GSM network



3.4 NOKIA PHONE EDITOR

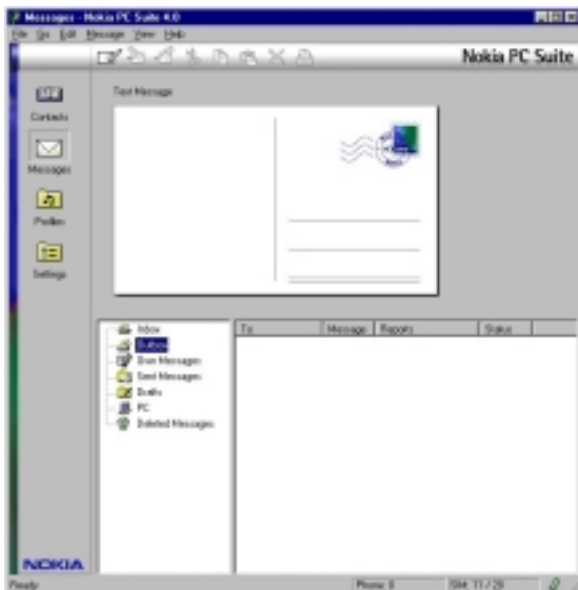
Contact editing. Allows you to do the following:

- Store your contacts on your PC's hard disk
- Create new contacts from your PC
- Export and import CSV files (comma separated values, used also by Outlook)
- Create your own business cards
- Send and receive business cards



SMS (short messages)

- You can also send long messages (concatenated)
- Store messages on your PC's hard disk
- Print messages
- Save messages as txt files on your PC's hard disk



Profile and Caller Group handling:

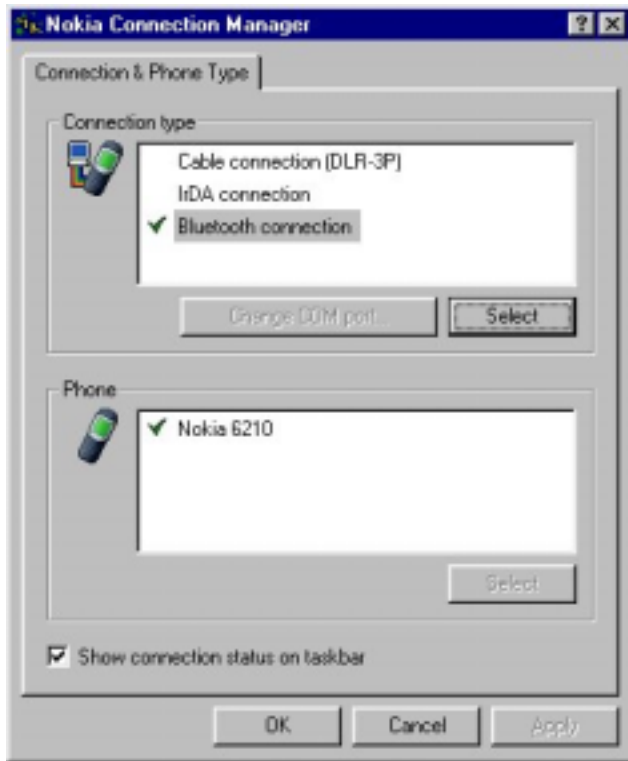
- You can activate a desired profile of your Nokia 6210 from your PC
- You can activate desired contacts on your SIM card or in your Nokia 6210 phone's memory to desired Caller Groups from your PC


You can create and use Caller Group Graphics with Nokia PC Graphics



4. USING PC SUITE 4.0 OR A DIAL-UP CONNECTION VIA BLUETOOTH

Handle connections between IrDa, cable and Bluetooth with the Nokia Connection Manager.



You can open this window by double clicking the Nokia Connection Manager icon  on the taskbar on the bottom right-hand corner of your screen. Once you have successfully connected and opened the Nokia PC Suite 4.0 you will see a green phone in bottom right-hand corner of the PC Suite 4.0 user interface:



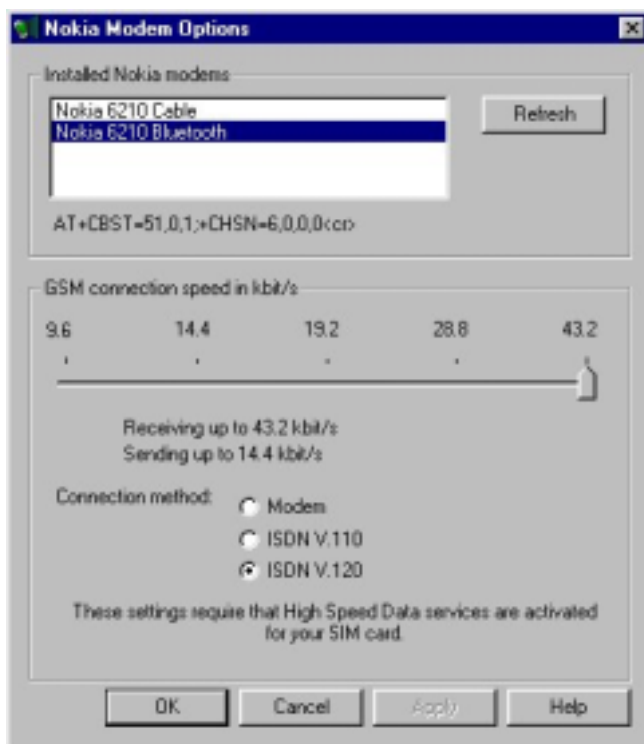
If PC Suite 4.0 is not ready for use, there will be red "X" over the phone:



The **Nokia Modem Options** icon will appear in the Control Panel:

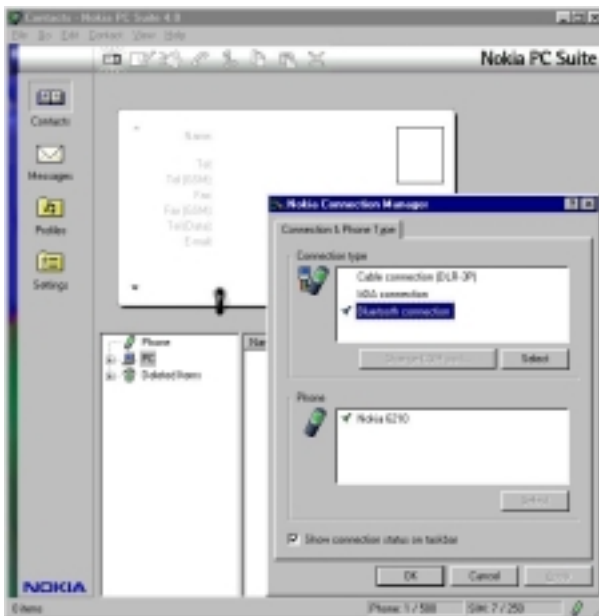


With Nokia Modem Options you can select the data connection speed you want when using a Nokia modem like the Nokia 6210 Bluetooth, Nokia 6210 Cable or Nokia Card Phone 2.0.



When you are using Dial-Up connection or PC Suite 4.0 features via Bluetooth wireless technology, you have to use the Nokia Connection Manager in order to select the connection type you want.

When using your Nokia 6210 to access PC Suite 4.0 features via Bluetooth you have to activate the Bluetooth connection from the Nokia Connection Manager:



To make a data call via Bluetooth you have to shut down the Nokia Connection Manager and deactivate the "Show connection status on taskbar" feature:

