



Quick Guide For Using The Deskstand

ADVANCED DESKTOP STAND DCH-7 AND PC SUITE

The Nokia Advanced Desktop Stand DCH-7, available as an accessory, provides a handy way to charge the Nokia 9110 Communicator and also a spare battery (optional). Other information is supplied in the Quick and Accessory Guide in the sales package with your communicator.

This deskstand provides easy computer connectivity, and a button to start data transfer with the PC Suite supplied with the communicator. This guide explains how to set up the deskstand.

This guide assumes that you have installed PC Suite and have achieved a connection with the communicator using the RS-232 Adapter Cable DLR-2 (supplied with your Nokia 9110 Communicator). Check the synchronisation settings are correct.

Connecting the deskstand

At the rear of the deskstand is a connector for RS-232 Adapter Cable DLR-2 (also available as an accessory). Connect the cable.



The button will not work unless Performance Travel Charger ACP-9 (supplied with Nokia 9110 Communicator or available as an accessory) is connected and *powered on*.



Computer connectivity with the deskstand is ready for use.

Using the computer connectivity

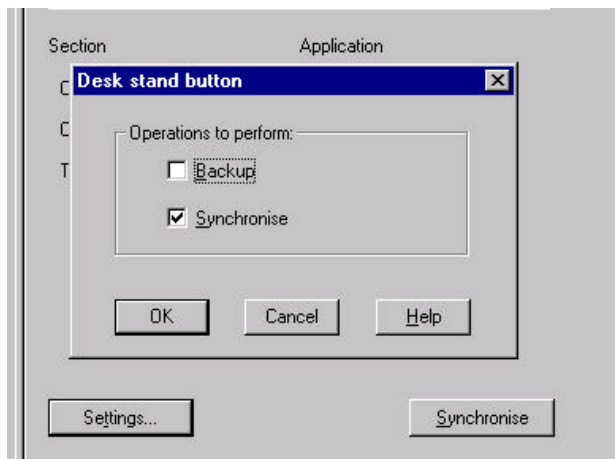
Start PC Suite and place your communicator in the deskstand. The communicator will make a connection to the PC Suite.

Using the deskstand button

Check the Deskstand button settings from the Options menu.



Then select the operation that you wish to perform and click OK



Note: if you choose **Backup** then you must specify a **Backup path** to your hard disk for the backup file set. Do this by selecting Backup / Restore icon, and then **Browse** to choose your hard disk folder for the backup set to be stored.

Note: if you choose **Synchronise** then you must have specified the synchronisation settings, Do this by selecting Intellisync icon, and then **Settings**.

Push deskstand button to start the operation.

TROUBLESHOOTING

Q: Communicator can't make connection with PC Suite

A: Check the data cable is connected properly and that correct serial port is selected in PC Suite in the Preferences menu from Options.

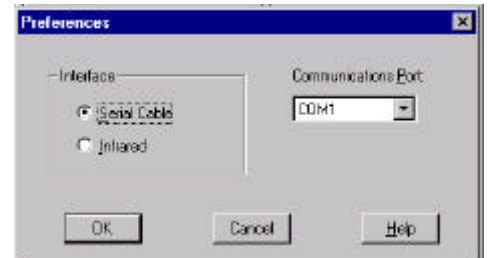
Q: Button does not work

A: check charger connected and powered on

A: check deskstand button settings correct in PC Suite Options menu

A: check synchronisation settings are set correctly

A: check that connection is made (see previous)



Legal Notice

The contents of this document are copyright © 1995 – 1999 Nokia. All rights reserved.

Reproduction, transfer, distribution or storage of part or all of the contents in any form without the prior written permission of Nokia is prohibited.

Nokia is a registered trademark of Nokia Corporation. Nokia's product names are either trademarks or registered trademarks of Nokia. Other product and company names mentioned herein may be trademarks of their respective owners.

The contents of this document is provided "as is". Except as required by the applicable law, no warranty of any kind, either express or implied, is made in relation to the accuracy, reliability or content of the document. Nokia reserves the right to revise the document or withdraw it at any time without prior notice.

Nokia is not responsible for any lost of data, income or any consequential damage howsoever caused.