


NOKIA	Nokia Data Suite 1.0 21.12.98	
--------------	--------------------------------------	--

Quick Guide to Using Nokia Cellular Data Suite with Dial-up networking

Installing and setting up

First you have to create a new connection for Nokia Cellular Data Suite. Choose **My computer icon** → **dial-up networking** → **make a new connection**. This opens a Window where you can choose the right modem and name the connection (Figure 1).



Figure 1. Making a new connection.

Enter a name for the connection and choose the 'Nokia GSM Data-Fax', click **Next>** and enter the correct number which you have obtained from your provider, also choose the correct area and country codes (Figure 2). Choose **Next>** to go further.

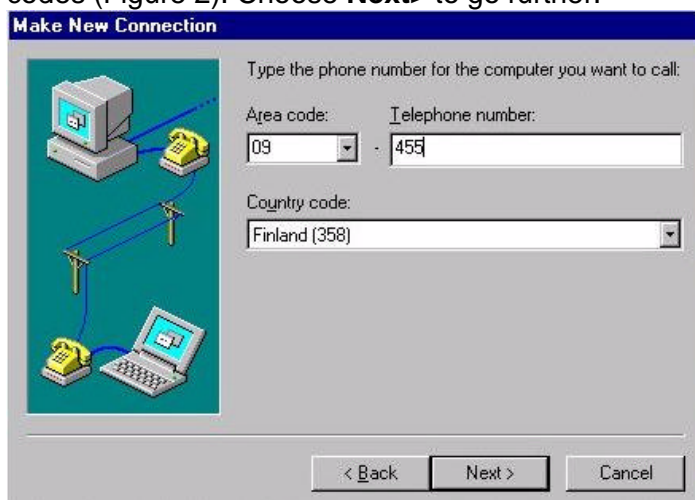


Figure 2. Number and codes.

Choosing the **Finish-** button will close the setup and create an icon for the dial-up networking folder (Figure 3).



Figure 3. Finishing the creation of a new connection.

Click this just made icon with the right button of the mouse and choose the properties. This will open a general information leaflet for this connection (Figure 4). (**NOTE:** If you are going to connect to an ISDN number you must add the following line to the extra settings: S35=0. This can be done by choosing **Configure... → Connection → Advanced... → Extra settings**). If you want to use this connection to “normal” line please noticed this.



Figure 4. General settings.

Under the **Server Type...**-button (Figure 5).

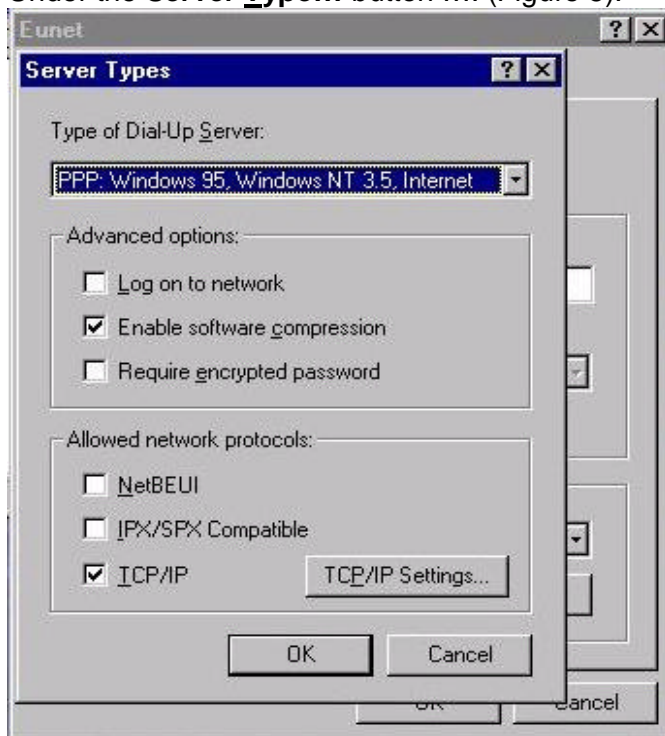


Figure 5. Server types.

Choose the **TCP/IP Settings...** button; then you must add all the settings which you have received from your service provider (Figure 6). When you have added all the necessary settings, close these windows by choosing the OK button.

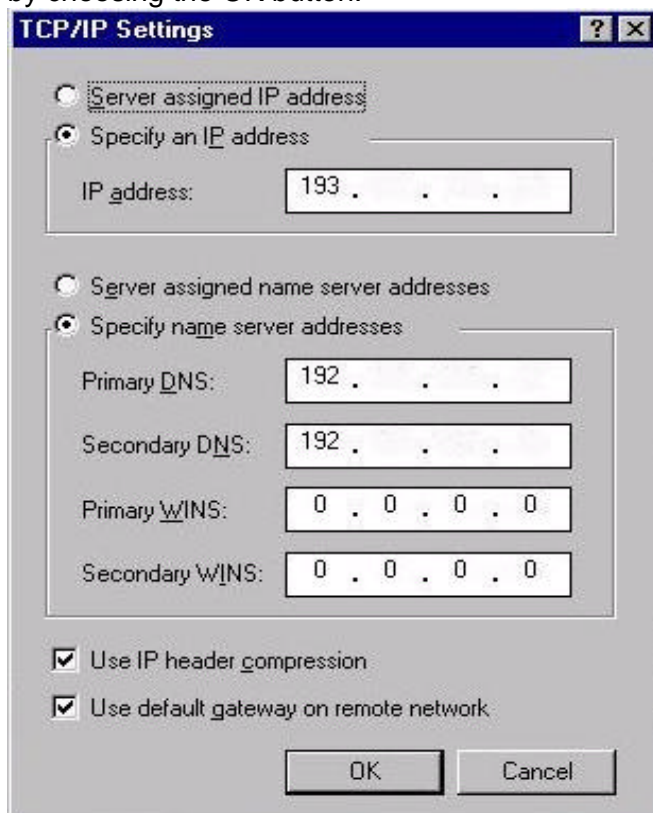


Figure 6. TCP/IP settings.

Making a connection

Double click the icon that you have just made. Add the username and password information (you will get these from your service provider). When you open this connection you can choose to save password for the next time (so you do not have to retype the password). Start to establish the connection by clicking **Connect** (Figure 7).

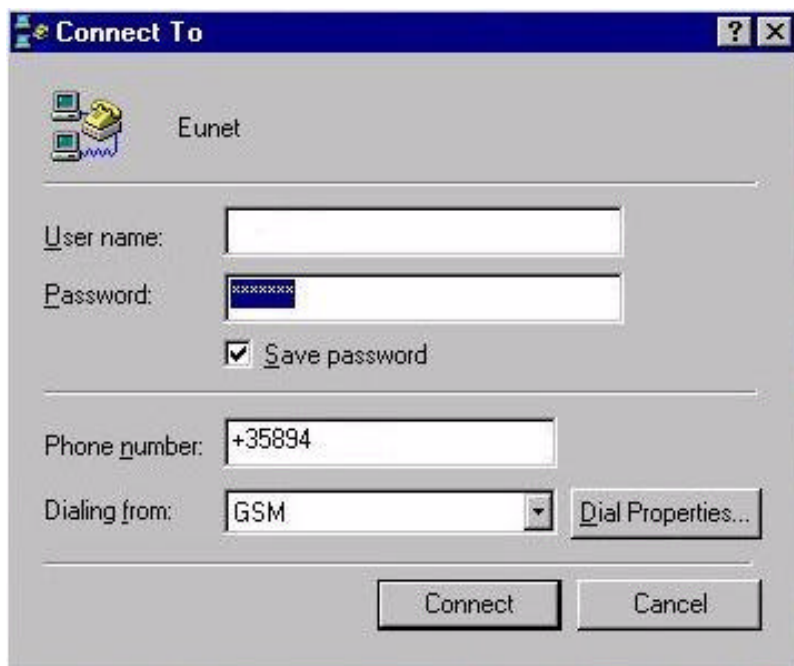


Figure 7. Connect to...

When you have clicked the **Connect** button, the computer should start to dial the number that you have specified in the set-up for your Internet service provider (Figures 8-10).



Figure 8-10. Making a connection...

When the connection is established a modem icon will appear in your taskbar (with two flashing red/green dots in it) and it is then possible to open, for example, Netscape or Internet Explorer to browse the Internet.

Legal Notice

The contents of this document are copyright © 1995 – 1998 Nokia. All rights reserved.

Reproduction, transfer, distribution or storage of part or all of the contents in any form without the prior written permission of Nokia is prohibited.

Nokia is a registered trademark of Nokia Corporation. Nokia's product names are either trademarks or registered trademarks of Nokia. Other product and company names mentioned herein may be trademarks of their respective owners.

The contents of this document is provided "as is". Except as required by the applicable law, no warranty of any kind, either express or implied, is made in relation to the accuracy, reliability or content of the document. Nokia reserves the right to revise the document or withdraw it at any time without prior notice.

Nokia is not responsible for any lost of data, income or any consequential damage howsoever caused.