



Quick Guide For Using The Nokia 9110 Communicator as a FaxModem over IR connection

Microsoft Windows 98

The communicator may be connected to a computer via an infrared or cable connection. The connection type is selected in the communicator's FaxModem settings (the Fax modem application is found in the System main view).

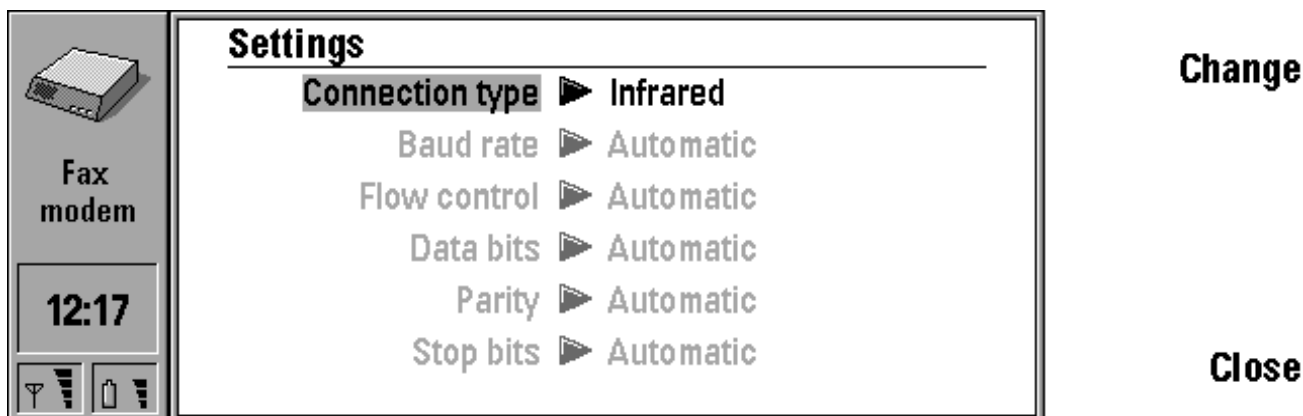
If you wish to use an infrared connection, your computer must have an IrDA compatible infrared port and the IrDA drivers must have been installed and activated (for more information on IrDA drivers and their use in Windows 98 contact Microsoft or the provider of your PC).

If the IrDA drivers are activated on your computer, the computer should automatically detect the presence of the communicator when you have put the IR ports of laptop and 9110 to face each other and pressed "activate" in the Communicator's fax-modem mode. This is indicated by an icon. When the dial-up networking (or some other communications application) is started the IR communications will be indicated by another icon.

When using the communicator as a fax modem via an infrared connection, it is recommended to use the communicator with cover closed to speed up the infrared link.

Fax modem installation using infrared connection:

- 1) Start Windows 98 and switch on the communicator's phone interface.
- 2) Insert the Configuration disk into the disk drive of your computer.
This floppy disk contains the modem information file. Alternatively the .inf file is available at the www.nokia.forum.com communicator pages.
- 3) The infrared ports of the communicator and the computer should be facing each other (the distance should be between 5 to 100 cm).
- 4) Select Infrared as the connection type in the Fax modem settings.



Picture 1.

5) Press Activate in the Fax modem main view.

6) Check from the Infrared Monitor of Windows 98 that Windows 98 is searching for other devices in range and Plug and Play is enabled.

7) If your Windows 98 operating system does not at this stage display a dialog box you can start using the communicator as a fax modem, i.e. you can start the communications application, e.g. dial-up networking.

8) If your Windows 98 displays the dialog boxes stating "New Hardware Found" and "Add New Hardware Wizard", Click Next



Picture 2.

9) Select "Search for the best driver for your device." Click Next



Picture 3.

10) Unselect Microsoft Windows Update. Click Next



Picture 4.

11) Click Next



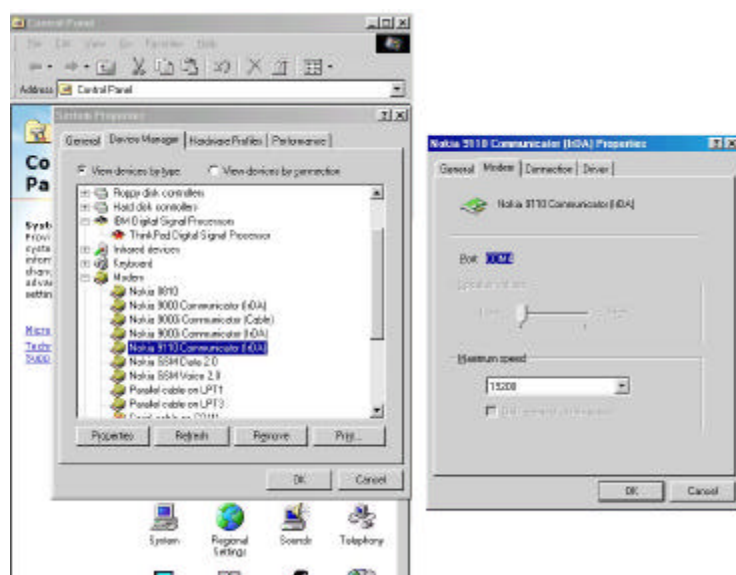
Picture 5.

12) The dialog "Install From Disk" appears. Click OK or press Enter. Windows 98 configures your communicator.



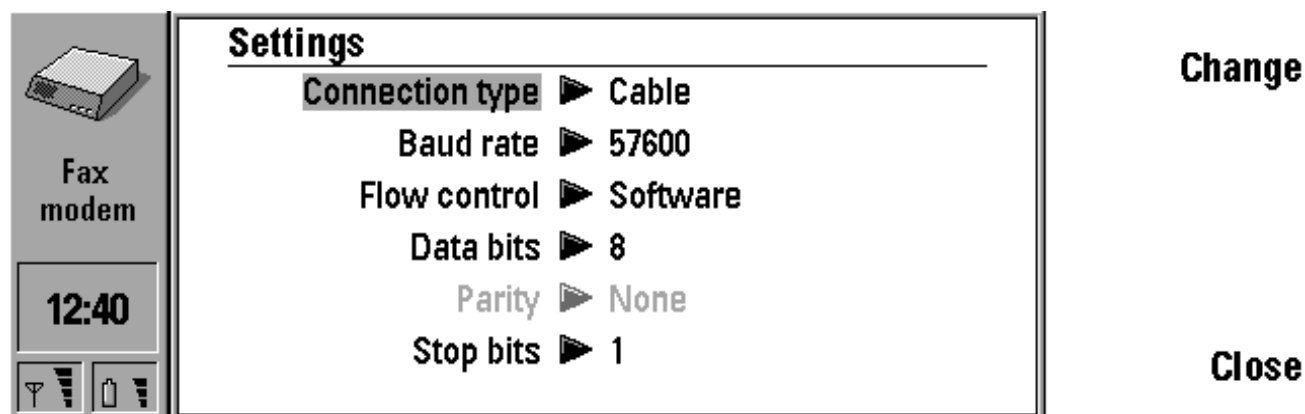
Picture 6.

13) Remove the Setup disk from the disk drive. You may now start using your communicator as a fax modem with Windows 98. The computer you have configured can now automatically detect the communicator every time the communicator is used as a fax modem with the computer.



Picture 7.

14) In the communicator's Fax modem settings, change the connection type to infrared.



Picture 8.

15) Press Activate in the Fax modem main view. You may now start using your communicator as a fax modem with Windows 98.

Legal Notice

The contents of this document are copyright © 1995 – 1999 Nokia. All rights reserved.

Reproduction, transfer, distribution or storage of part or all of the contents in any form without the prior written permission of Nokia is prohibited.

Nokia is a registered trademark of Nokia Corporation. Nokia's product names are either trademarks or registered trademarks of Nokia. Other product and company names mentioned herein may be trademarks of their respective owners.

The contents of this document is provided "as is". Except as required by the applicable law, no warranty of any kind, either express or implied, is made in relation to the accuracy, reliability or content of the document. Nokia reserves the right to revise the document or withdraw it at any time without prior notice.

Nokia is not responsible for any lost of data, income or any consequential damage howsoever caused.