


NOKIA	Nokia Data Suite 21.12.98	
--------------	----------------------------------	--

Quick Guide to Using the Nokia Data Suite 1.0 to 2.0 or the Nokia Cellular Data Card with Procomm Plus 4.0

Installing and setting up

To install Procomm Plus 4.0 (hereafter called Procomm in this document) follow the instructions given in the Procomm installation guide.

After installation restart your computer.

When you start Procomm for the first time, it will check the capabilities of the modems that are installed in your computer. Now you should see Procomm's terminal window.

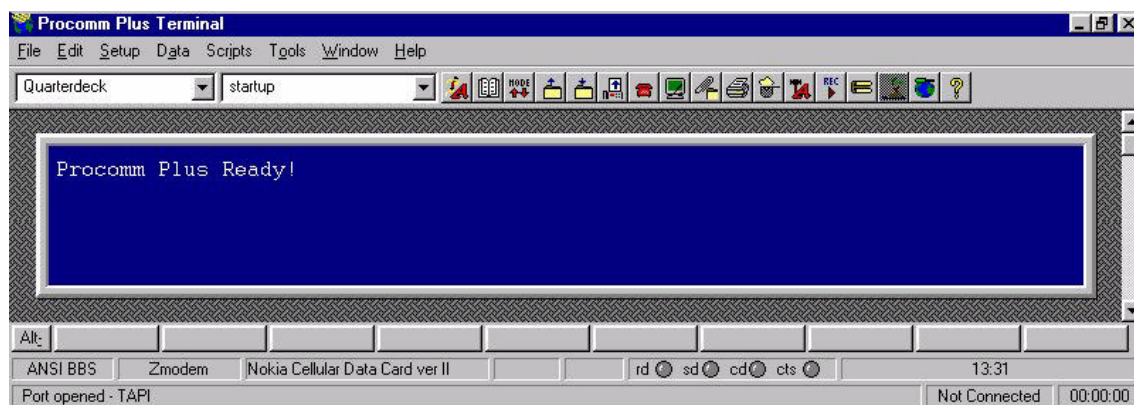


Figure 1. Terminal window of Procomm.

In the status bar you should see the active modem.

This should read "Nokia GSM Data-Fax" for the Nokia Cellular Data Suite or "Nokia Cellular Data Card ver II" for data card; if not, click Setup, and then click Setup and click System tab. Click Modem Connection and select the desired modem in the current Modem/Connection box. See Figure 2.

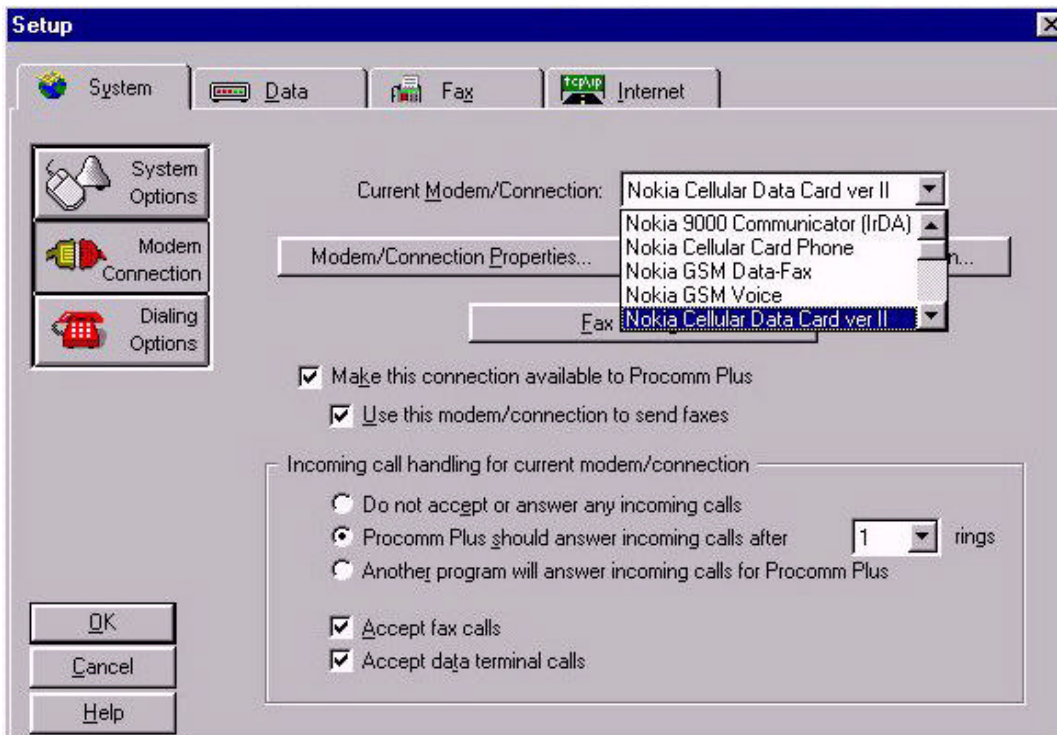


Figure 2. Selecting modem connection.

Mark the “Make this connection available...” box.

If you want to send faxes using this modem, mark the “use this modem...” box.

If you want to answer for data terminal calls click “Procomm Plus should answer...” and mark the “Accept data terminal calls” box.

NOTE: If you want to answer for fax calls mark the “Accept fax calls” box and **deselect** the “Accept data terminal calls” box.

You may change the fax settings by clicking the Fax Settings button. These default settings are OK for the Nokia Cellular Data Suite or Nokia Cellular Data Card.

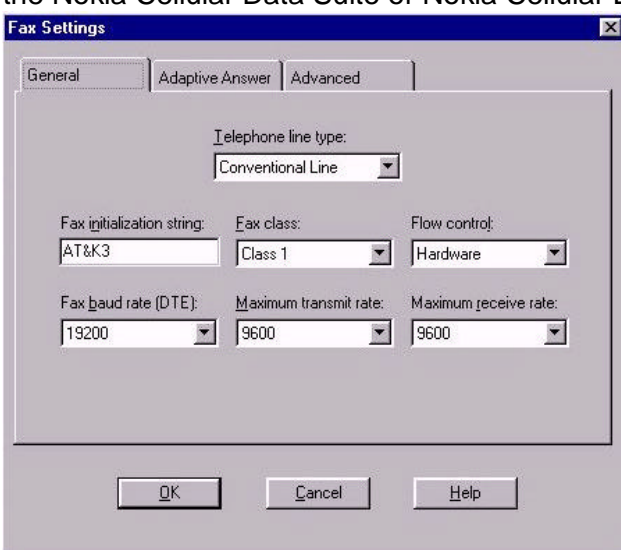


Figure 3. Fax Settings.

Making a data connection

When you have selected the right modem - you will see a window such as the one in Figure 1 - you can make data calls by making a directory entry (Figure 4) or you can click the data menu and then click Modem Command Mode; after that Procomm replies OK and now you can give AT commands.

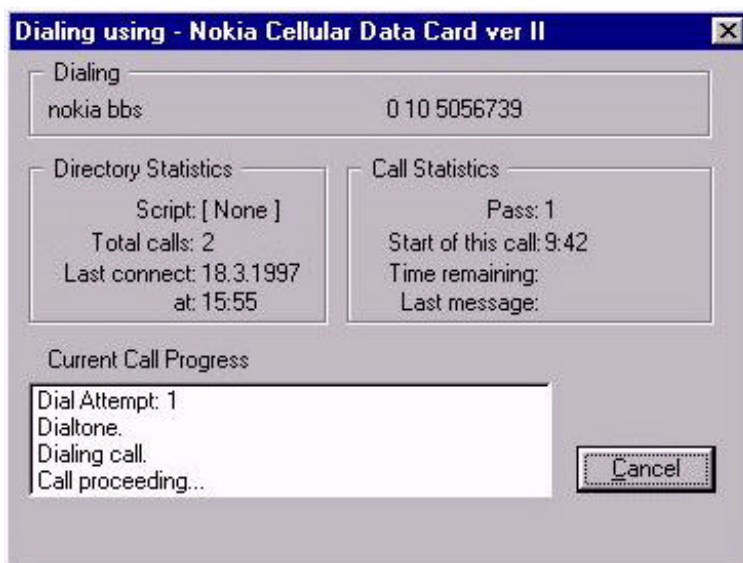


Figure 4. Dialling.

Sending / Receiving a fax

You can send a fax by clicking Send a Fax in the Tools menu or you can open the Fax Manager - Click Tools menu and click Fax Manager.

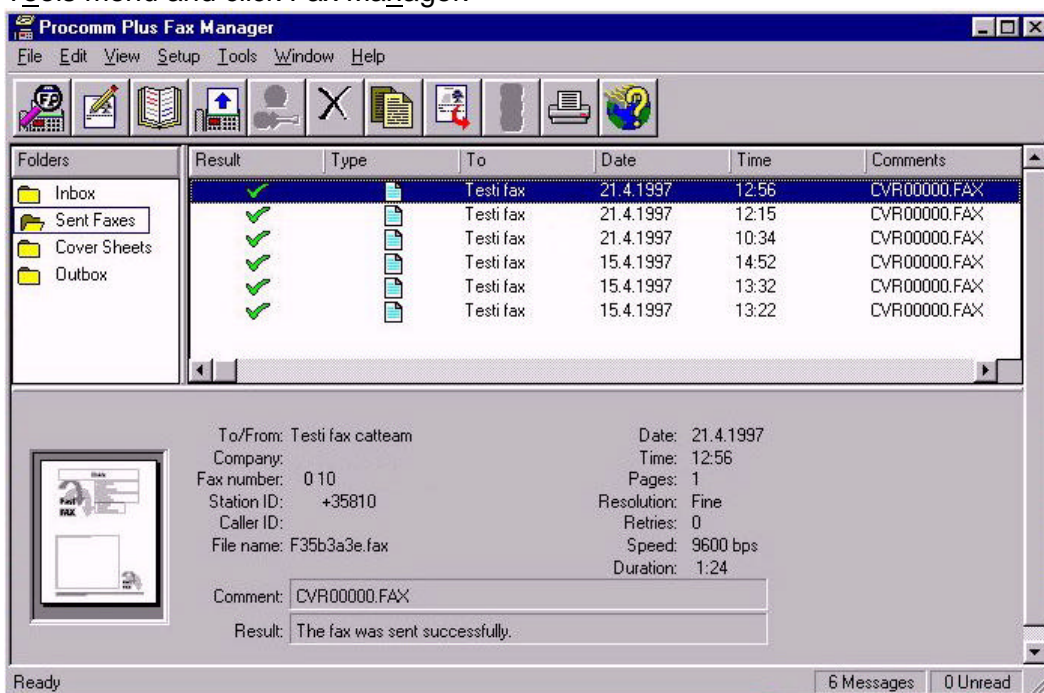


Figure 5. Fax Manager.

Click the Send fax icon or click File and click the Send a fax. Send fax wizard will help you.

Click Fax status in the Tools menu so you can monitor the fax activity.

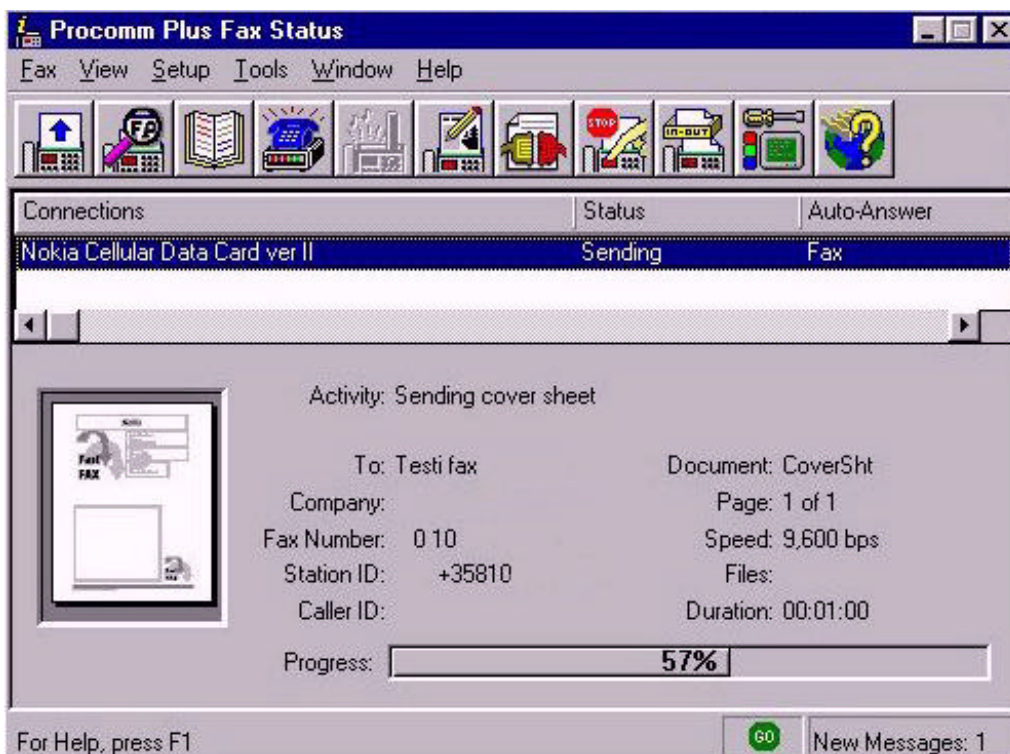


Figure 6. Fax status.

Troubleshooting

If you cannot receive a fax, make sure that you have activated fax call answer, see Figure 2. Also you have to disable the 'Accept data terminal calls' option.

Legal Notice

The contents of this document are copyright © 1995 – 1998 Nokia. All rights reserved. Reproduction, transfer, distribution or storage of part or all of the contents in any form without the prior written permission of Nokia is prohibited.

Nokia is a registered trademark of Nokia Corporation. Nokia's product names are either trademarks or registered trademarks of Nokia. Other product and company names mentioned herein may be trademarks of their respective owners.

The contents of this document is provided "as is". Except as required by the applicable law, no warranty of any kind, either express or implied, is made in relation to the accuracy, reliability or content of the document. Nokia reserves the right to revise the document or withdraw it at any time without prior notice.

Nokia is not responsible for any lost of data, income or any consequential damage howsoever caused.