



Quick Guide to Installing the Nokia 7110 as a modem and making a Dial-Up Connection in Windows 2000

1. Installing and setting up

Go to **My Computer – Control Panel – Phone and Modem Options**. In *Phone And Modem Options* go to *Modems* and click on Add...

In the *Add/Remove Hardware Wizard* select *Don't detect my modem; I will select it from a list* and click Next > (Figure 1).

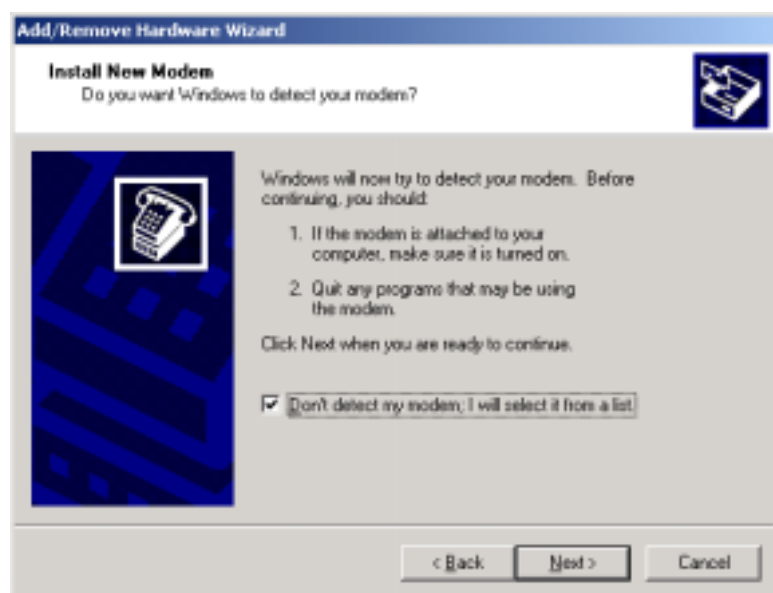


Figure 1. Installing the Nokia 7110 as a modem.

In the *Add/Remove Hardware Wizard* select Have Disk... (Figure 2).

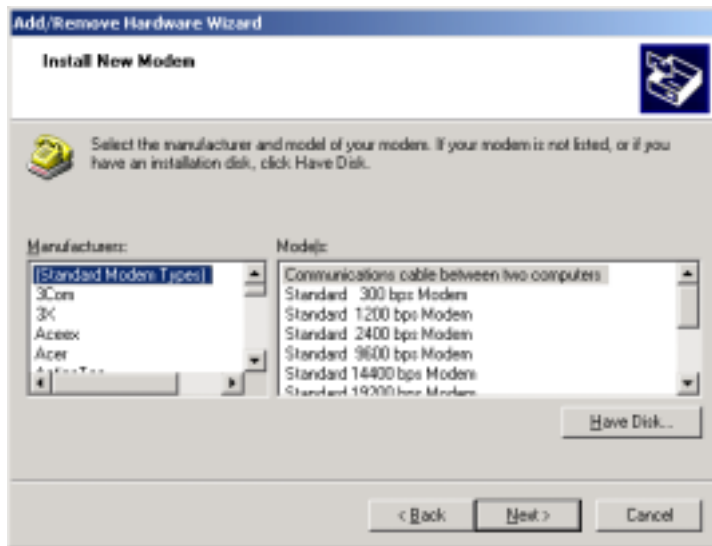


Figure 2.

In *Install From Disk* click Browse... (Figure 3).

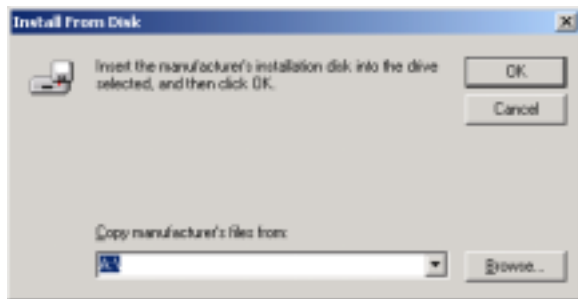


Figure 3.

In *Locate File* browse through the drives to find the appropriate (cable version) modem .inf file (Figure 4).

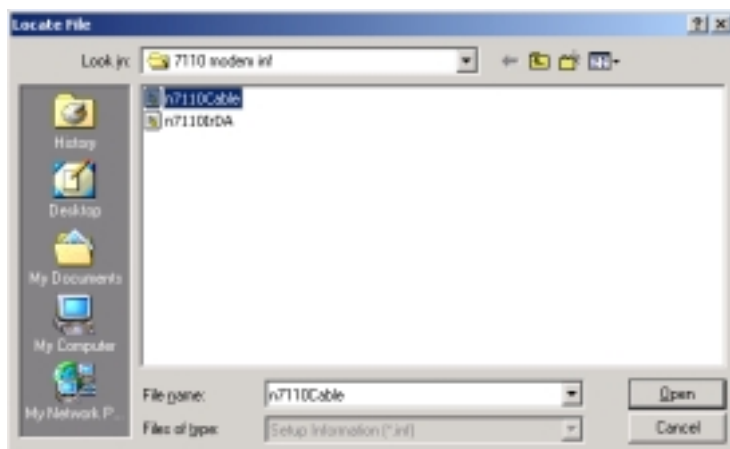
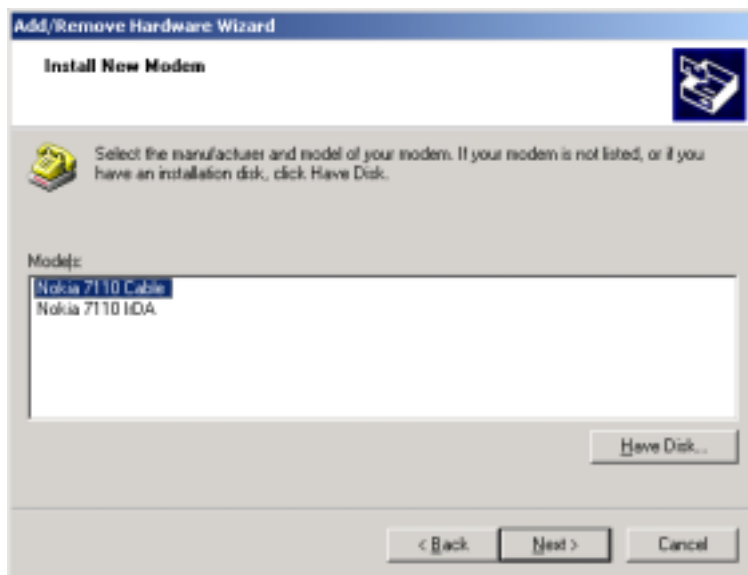


Figure 4. Locating the file

After you have located and selected the appropriate modem *.inf* file Windows will issue a warning and ask if you wish to continue with the installation (Figure 5): (just click on Yes)

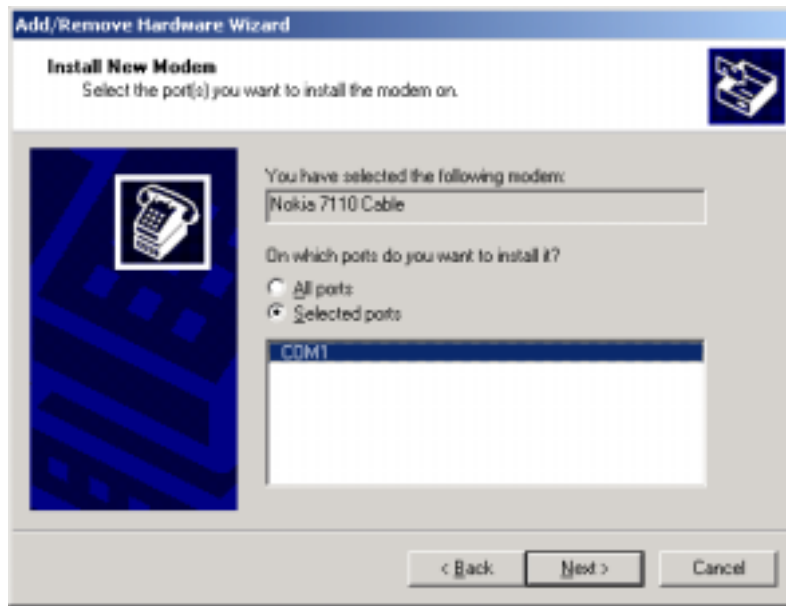


Figure 5. Accepting the warning.



Now select the cable version of the driver and click Next > (Figure 6). NOTE! There is no possibility to use any Mobile phone via IrDA in Windows 2000 because there is no proper IrComm in the IrDA stack of Windows 2000.

Figure 6. Selecting a modem driver.



Select the appropriate port and click Next (Figure 7).
Figure 7.

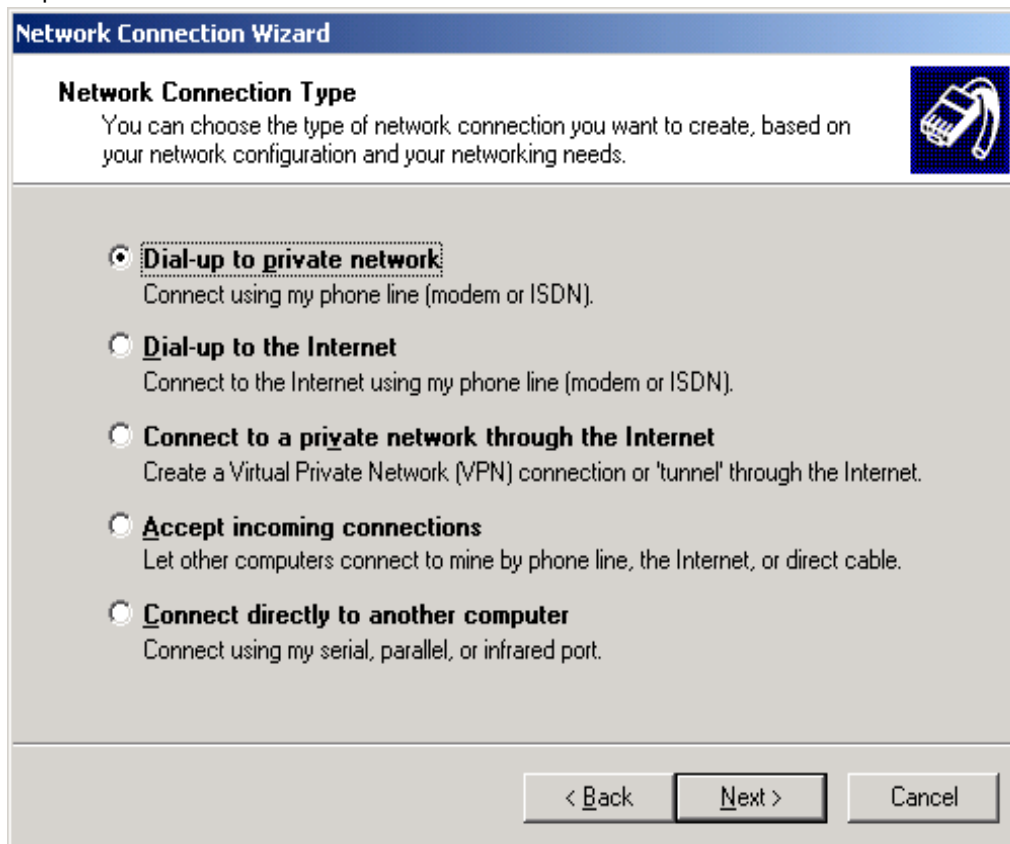
You have now successfully installed a new modem to your computer. Just click Finish. Now you can some configurations if needed or just click OK.

Setting up a Dial-Up connection for use with the Nokia 7110 via cable

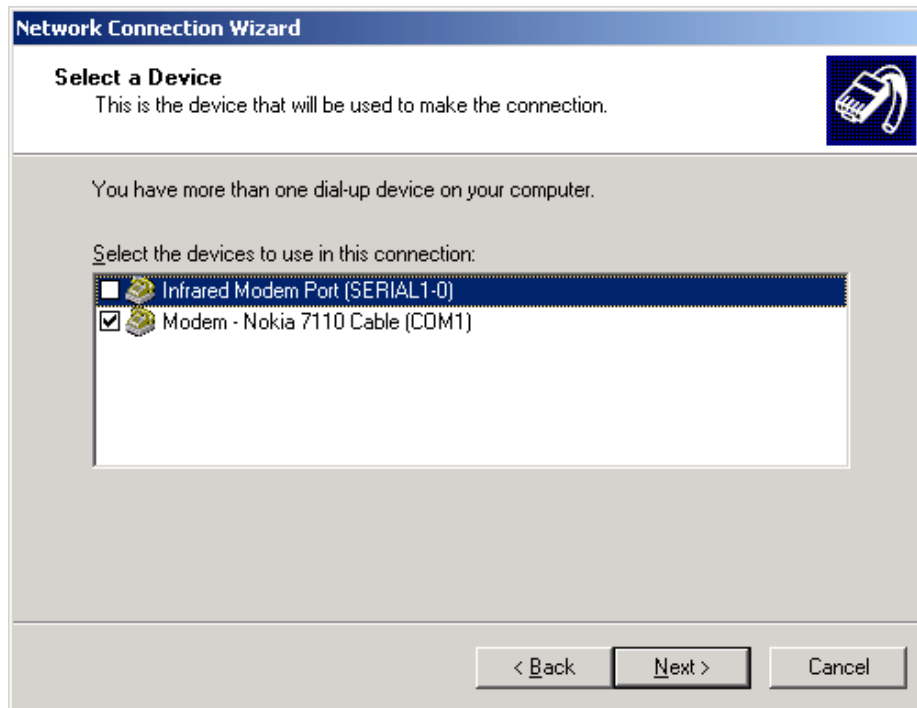


in Windows 2000

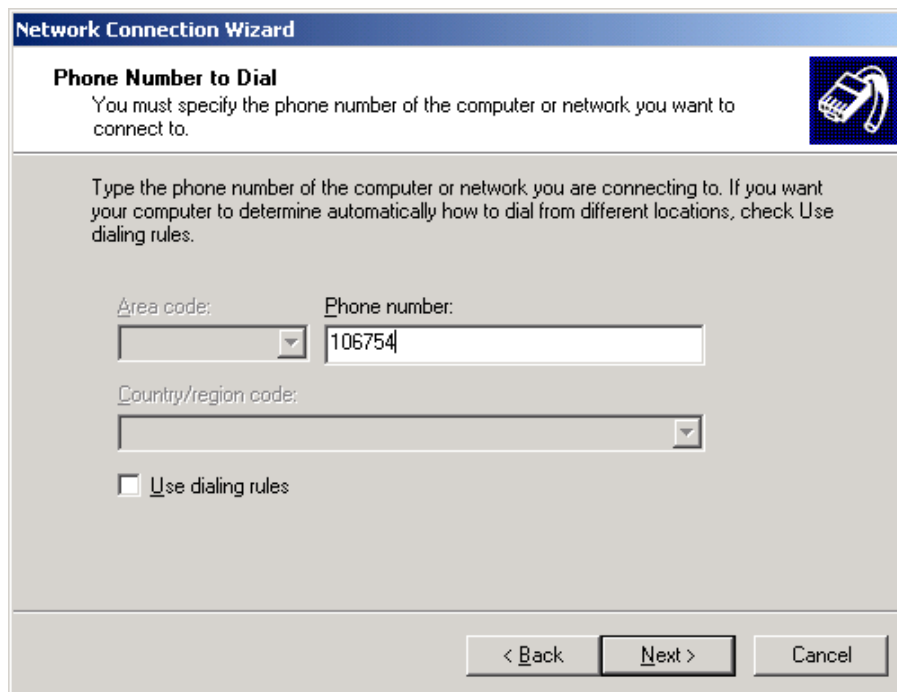
Step 1. Click Next.



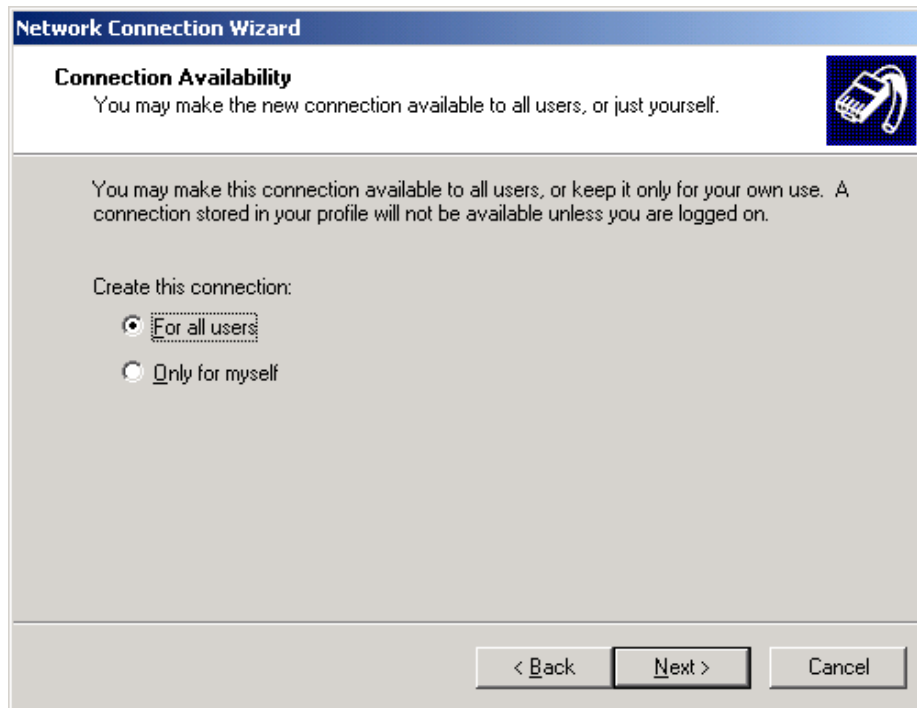
Step 2. Choose either *Dial up to private network* or *Dial-Up to the Internet* and click Next.



Step 3. Choose the applicable modem and Click Next.



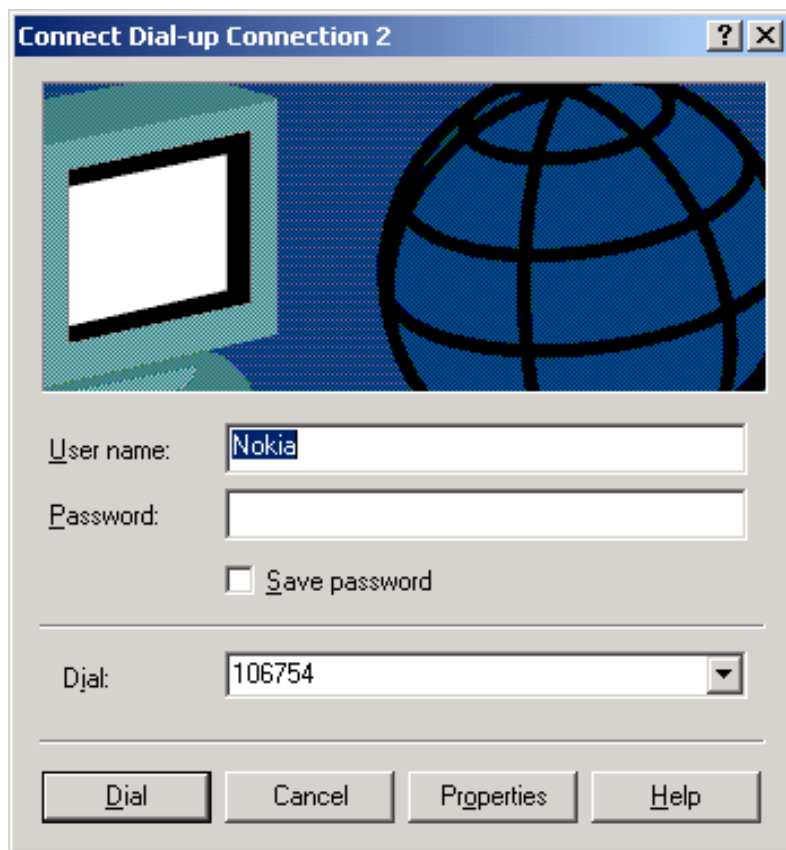
Step 4. Type in the ISP's phone number and Click Next.



Step 5. Choose either *For all users* or *Only for myself* and Click *Next*.



Step 6. Name the connection and Click *Finish*.



Step 7. Now you should be able to establish a Dial-Up connection to your ISP.

LEGAL NOTICE

Copyright © Nokia Mobile Phones 2000. All rights reserved.

Reproduction, transfer, distribution or storage of part or all of the contents of this document in any form without the prior written permission of Nokia is prohibited.

Nokia and Nokia Connecting People are registered trademarks of the Nokia Corporation. Other product and company names mentioned herein may be trademarks or tradenames of their respective owners.

Nokia operates a policy of continuous development. Therefore, we reserve the right to make changes and improvements to any of the products described in this document without prior notice.

Under no circumstances shall Nokia be responsible for any loss of data or income or any special, incidental, consequential or indirect damage howsoever caused.

The contents of this document are provided "as is". Except as required by the applicable law, no warranties of any kind, either express or implied, including, but not limited to, the implied warranties of merchantability and fitness for a particular purpose, are made in relation to the accuracy, reliability or contents of this document. Nokia reserves the right to revise this document or to withdraw it at any time without prior notice.