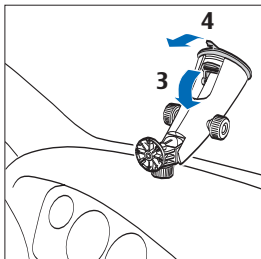
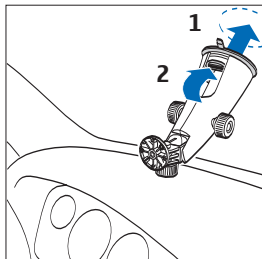
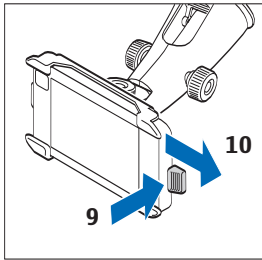
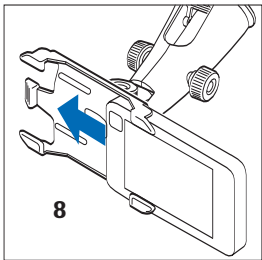
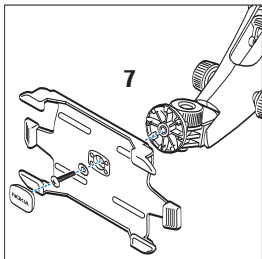
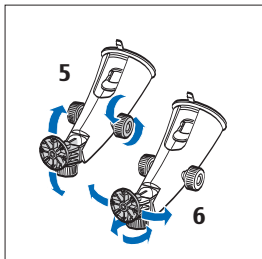


Nokia Holder Easy Mount HH-12 & Nokia Mobile Holder CR-86





© 2007 Nokia. All rights reserved.

Nokia and Nokia Connecting People are registered trademarks of Nokia Corporation.

Introduction

The Nokia Holder Easy Mount HH-12 is a mounting device that allows you to attach your compatible Nokia mobile holder to the windshield of your vehicle.

To use the mounting device with your compatible mobile holder, attach the mounting device to the windshield, adjust the mounting device into the desired position, and attach your mobile holder to the mounting device.

General safety instructions

Obey all local laws. Always keep your hands free to operate the vehicle while driving. Your first consideration while driving should be road safety. Only operate the mounting device or mobile holder if it is safe to do so under all driving conditions.

When you install the mounting device or mobile holder, ensure that they do not interfere with or hinder the steering or braking systems or other systems used in the operation of the vehicle (for example, airbags) or disturb your field of vision while driving.

Check that the deployment of the airbag is not blocked or impaired in any way.

Ensure that the mounting device or mobile holder is not installed where you might come in contact with it in the event of an accident or collision.

Periodically check that the suction cup at the bottom of the mounting device is firmly attached to the

windshield, especially if the ambient temperature changes a lot.

Never leave the mounting device inside the vehicle in direct sunlight or in excessive heat. The mounting device and suction cup may be damaged and adhesion may be impaired if the inside temperature exceeds +70°C (160°F).

Attach to a windshield

Locate a safe mounting surface on the windshield, and clean the surface thoroughly with a glass cleaner and a clean towel. If the ambient temperature is below +15°C (60°F), carefully warm the surface and the suction cup with a hair dryer to ensure a firm grip on the windshield. Ensure that you do not heat the

windshield excessively to avoid damage to it.

Press the suction cup at the bottom of the mounting device firmly on the windshield (see step 1 at the start of this guide), and carefully push the locking lever inside the mounting device (2) towards the suction cup to create a vacuum between the suction

cup and the windshield. Check that the suction cup is firmly attached.

To detach the mounting device from the windshield, carefully push the

locking lever toward the top of the mounting device (3), and pull the strap located on the edge of the suction cup (4).

Set to the desired position

Do not adjust the mounting device while driving.

To set the top of the mounting device to the desired position, loosen the two screws in the middle of the mounting device, turn the top to the desired position, and tighten the

screws (5). Ensure that the top of the device is firmly locked into place.

To set the mounting plate at the top of the mounting device to the desired position, loosen the screw below the plate, turn the plate to the desired position, and tighten the screw (6).

Mount the mobile holder

To attach a compatible Nokia mobile holder to the mounting plate, use the screw supplied with the holder.

To use the CR-86 mobile holder, remove the protection plate with the

Nokia text from the holder, attach the holder to the mounting plate with the supplied screw, and replace the protection plate (7). To insert your mobile device into the holder, slide it into the holder from the side (8). To

remove the device, push the catch at the side of the holder (9), and pull the device out (10).

When attaching a mobile holder, ensure that the display of the mobile device is clearly visible for the user. For your safety, install the holder in the upright position.

Care and maintenance

Your device is a product of superior design and craftsmanship and should be treated with care. The following suggestions will help you protect your warranty coverage.

- Keep all accessories and enhancements out of the reach of small children.
- Do not use or store the device in dusty, dirty areas. Its moving parts can be damaged.
- Do not drop, knock, or shake the device. Rough handling can break fine mechanics.

- Do not use harsh chemicals, cleaning solvents, or strong detergents to clean the device.
- Do not paint the device. Paint can clog the moving parts and prevent proper operation.

If the product is not working properly, take it to the nearest authorized service facility for service.